



Our Ref: MET/7/257

Issue date: 29 April 2024

SEVEN-DAY WEATHER FORECAST VALID 30 APRIL TO 6 MAY 2024

HIGHLIGHTS

<p>Forecast for 30 April to 6 May 2024</p> <ul style="list-style-type: none"> Rainfall is expected to continue over several parts of the country. Heavy rainfall events are likely to occur in some parts of the Highlands East and West of the Rift Valley, the Lake Victoria Basin, the Rift Valley, the South-eastern lowlands, North-western and North-eastern Kenya. Flooding is expected in low-lying areas, those in flood plains as well as in urban areas with poor drainage. Landslides may occur on steep slopes where soils become saturated. 	<p>Weather Review for 22 to 28 April 2024</p> <ul style="list-style-type: none"> Rainfall was recorded in most parts of the country. Day-time (maximum) temperatures decreased over most parts of the country though a few Coastal stations recorded slight warming. Night-time (minimum) temperatures increased over some stations including Lodwar, Suba and Kabarak and decreased over Nyahururu, Mandera and Laikipia among others.
---	---

1 FORECAST FOR 30 APRIL TO 6 MAY 2024

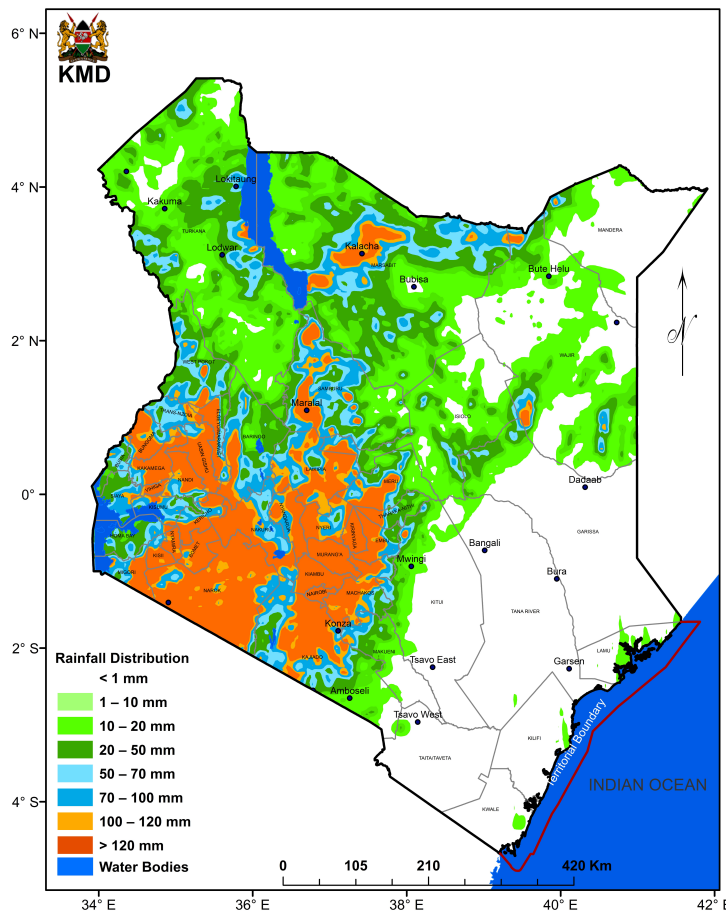


FIG 1: FORECASTED SEVEN-DAY TOTAL RAINFALL FOR 30 APRIL TO 6 MAY 2024

Rainfall is expected to continue over several parts of the country. Heavy rainfall events are likely to occur in some parts of the Highlands East and West of the Rift Valley, the Lake Victoria Basin, the Rift Valley, the South-eastern lowlands, North-western and North-eastern Kenya as shown in **Figure 1**.

High average daytime (maximum) temperatures of more than 30°C will be experienced in most parts of the Coast, North-eastern and North-western Kenya as shown in **Figure 2**.

Average night-time (minimum) temperatures will be moderate (between 10°C and 20°C) over much of the Highlands East and West of the Rift Valley and the South-eastern lowlands as shown in **Figure 3**.

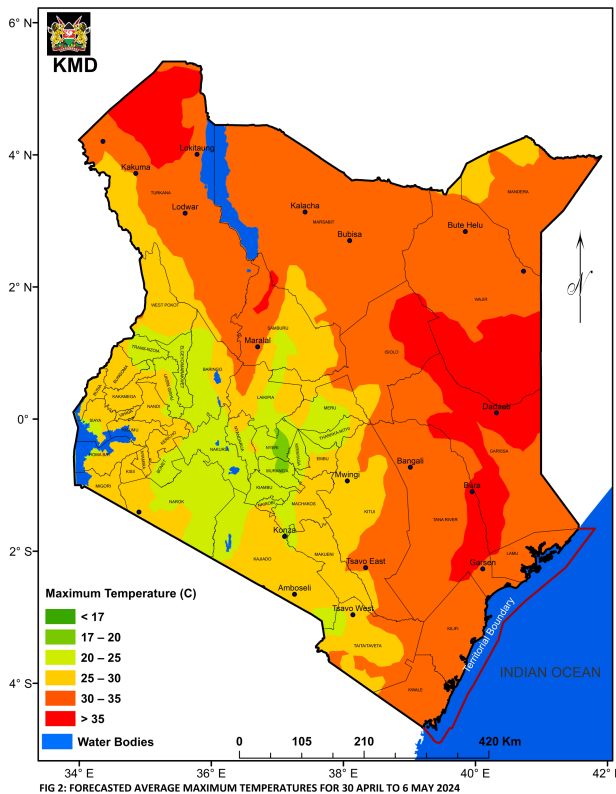


FIG 2: FORECASTED AVERAGE MAXIMUM TEMPERATURES FOR 30 APRIL TO 6 MAY 2024

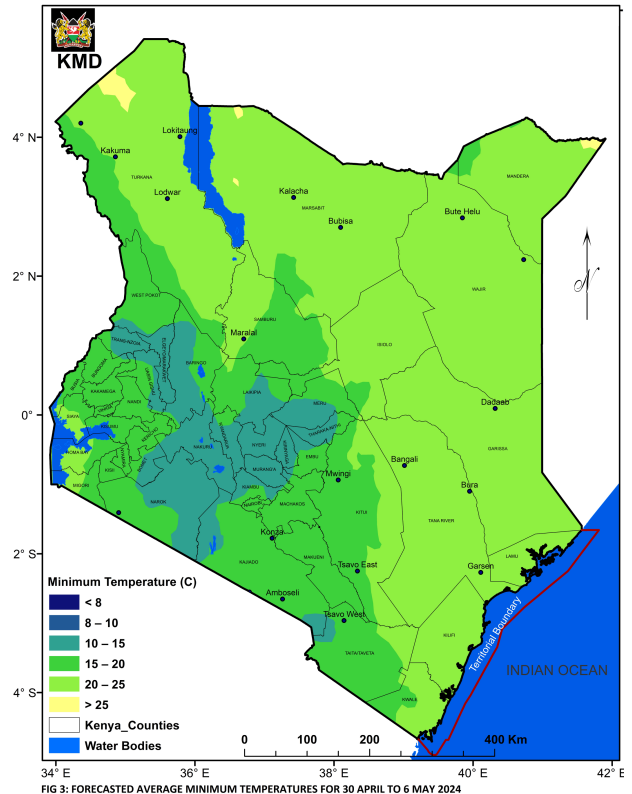


FIG 3: FORECASTED AVERAGE MINIMUM TEMPERATURES FOR 30 APRIL TO 6 MAY 2024

1.1 DETAILED REGIONAL RAINFALL FORECAST FOR 30 APRIL TO 6 MAY 2024

1.1.1 The Highlands West of the Rift Valley, the Lake Victoria Basin and the Rift Valley (*Kisii, Nyamira, Nandi, Kericho, Bomet, Kakamega, Vihiga, Bungoma, Siaya, Kisumu, Homabay, Busia, Migori, Narok, Baringo, Nakuru, Trans-Nzoia, Uasin-Gishu, Elgeyo-Marakwet and West-Pokot Counties*):

Morning rains are likely to occur over few places occasionally spreading to several places. Afternoon and night showers and thunderstorms are expected over several places.

1.1.2 North-western Kenya (*Turkana and Samburu Counties*):

Morning rains as well as afternoon and night showers and thunderstorms are expected over few places occasionally spreading to several places.

1.1.3 The Highlands East of the Rift Valley (including Nairobi County) (*Nyandarua, Laikipia, Nyeri, Kirinyaga, Murang'a, Kiambu, Meru, Embu, Tharaka-Nithi and Nairobi Counties*):

Morning rains are likely to occur over few places occasionally spreading to several places. Afternoon and night showers and thunderstorms are expected over several places.

1.1.4 North-eastern Kenya (*Marsabit, Mandera, Wajir, Garissa and Isiolo Counties*):

Morning rains as well as afternoon and night showers and thunderstorms are expected over few places occasionally spreading to several places.

1.1.5 The South-eastern lowlands (*Machakos, Kitui, Makueni, Kajiado and Taita-Taveta Counties*):

Morning rains as well as afternoon and night showers and thunderstorms are expected over few places.

1.1.6 The Coast (Mombasa, Tana-River, Kilifi, Lamu and Kwale Counties):

Sunny intervals are expected during the day while nights are likely to be partly cloudy.

1.2 EXPECTED IMPACTS OF ONGOING RAINS

- Flooding is expected in low-lying areas, those in flood plains as well as in urban areas with poor drainage. The public is advised to avoid driving through or wading in fast moving water. Those living within flood plains should remain alert as flood waters may appear even in the absence of rain.
- Landslides may occur on steep slopes where soils become saturated.
- Visibility is likely to be reduced during heavy rainfall events. Road-users, aviators and boat-operators are advised to exercise caution.
- The expected heavy rainfall is likely to be accompanied by strong winds, thunder and lightning. The public are advised to avoid sheltering under trees and metallic structures to minimize exposure to lightning strikes. They are also advised to be cautious since the forecasted strong winds may damage roofs, trees, billboards, etc.
- Large waves and strong winds may affect marine activities.

1.3 DETAILED TEMPERATURE FORECAST FOR 30 APRIL TO 6 MAY 2024

Expected maximum and minimum temperatures for selected towns and cities are shown in **Table 1**.

CITY/TOWN	MAX (°C)	MIN (°C)	CITY/TOWN	MAX (°C)	MIN (°C)	CITY/TOWN	MAX (°C)	MIN (°C)
LODWAR	38.0	19.0	SUBA	31.0	20.0	NGONG	24.0	15.0
MARSABIT	28.0	19.0	NAKURU	29.0	15.0	MAKINDU	31.0	19.0
MOYALE	31.0	19.0	KABARAK	27.0	14.0	KITUI	29.0	19.0
GARISSA	36.0	23.0	NAROK	25.0	16.0	VOI	34.0	22.0
MANDERA	36.0	21.0	NYAHURURU	25.0	11.0	LAMU	33.0	24.0
KITALE	28.0	15.0	NYERI	27.0	15.0	MALINDI	32.0	25.0
KAKAMEGA	31.0	16.0	EMBU	27.0	17.0	MSABAHA	32.0	25.0
ELDORET	26.0	13.0	MERU	26.0	16.0	MTWAPA	31.0	24.0
KERICHO	27.0	13.0	LAIKIPIA	28.0	14.0	MOMBASA	33.0	24.0
KISII	29.0	17.0	NAIROBI	28.0	15.0			
KISUMU	30.0	19.0	THIKA	28.0	18.0			

2 WEATHER REVIEW FOR 22 TO 28 APRIL 2024

2.1.1 Rainfall Review

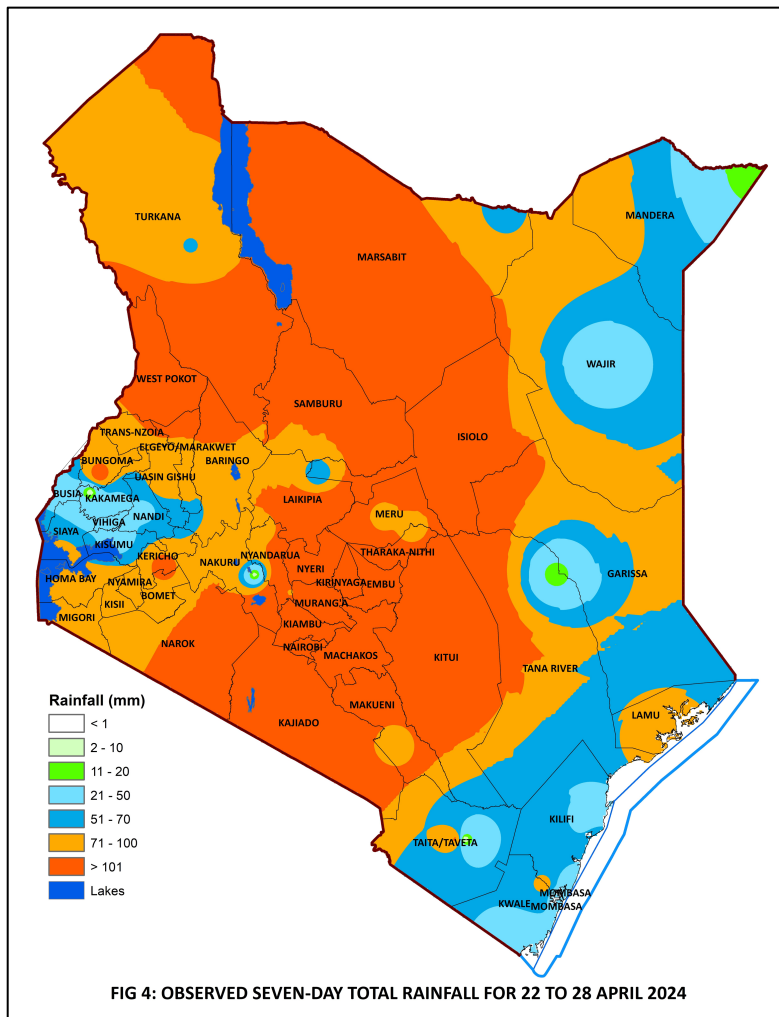


FIG 4: OBSERVED SEVEN-DAY TOTAL RAINFALL FOR 22 TO 28 APRIL 2024

Rainfall continued to be recorded in most parts of the country as shown in Figures 4 & 5.

Comparing the 15 to 21 April 2024 and the 22 to 28 April 2024 periods, it is noted that there was an increase in rainfall amounts over most parts of the country.

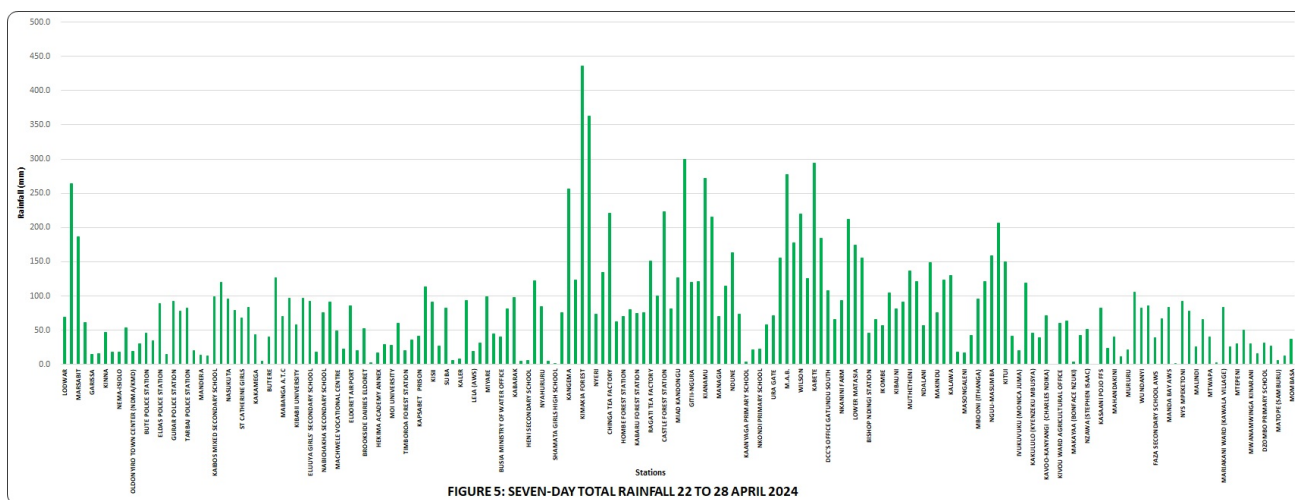


FIGURE 5: SEVEN-DAY TOTAL RAINFALL 22 TO 28 APRIL 2024

The highest seven-day rainfall total (435.8 mm) was recorded at Kimakia Forest Rainfall Station in Murang'a County. Other stations that recorded significant rainfall totals during the review period are shown in **Table 1**.

STATION	COUNTY	SEVEN-DAY TOTAL RAINFALL (mm)
NDAKA-INI RAINFALL STATION	MURANG'A	362.4
EMBU METEOROLOGICAL STATION	EMBU	299.9
KABETE METEOROLOGICAL STATION	NAIROBI	293.9
MOI AIR BASE METEOROLOGICAL STATION	NAIROBI	277.6
KIANAMU RAINFALL STATION	EMBU	272.1
KAINUK SECONDARY SCHOOL RAINFALL STATION	TURKANA	263.8
KANGEMA METEOROLOGICAL STATION	MURANG'A	255.9
CASTLE FOREST RAINFALL STATION	KIRINYAGA	222.9
CHINGA TEA FACTORY RAINFALL STATION	NYERI	221.4
WILSON AIRPORT METEOROLOGICAL STATION	NAIROBI	219.6

Kimakia Forest Rainfall Station in Murang'a County recorded the highest amount of rainfall within 24-hours: 158.4 mm on 28 April 2024. Other stations that recorded very heavy rainfall (more than 50 mm within 24 hours) are shown in **Table 2**.

STATION	COUNTY	AMOUNT (mm)	DATE
KAINUK SECONDARY SCHOOL RAINFALL STATION	TURKANA	146.7	25 April 2024
MARSABIT METEOROLOGICAL STATION	MARSABIT	140.1	27 April 2024
KIANAMU RAINFALL STATION	EMBU	119.5	23 April 2024
KAIRUNGU RAINFALL STATION	KITUI	118.5	25 April 2024
WOTE NZIU RAINFALL STATION	MAKUENI	118.2	25 April 2024
KABETE METEOROLOGICAL STATION	NAIROBI	111.3	22 April 2024
EMBU METEOROLOGICAL STATION	EMBU	104.7	27 April 2024
MUTHETHENI RAINFALL STATION	MACHAKOS	92.0	23 April 2024
NDUNE RAINFALL STATION	EMBU	90.5	27 April 2024
CHINGA TEA FACTORY RAINFALL STATION	NYERI	89.2	24 April 2024

2.2 Temperature Review

Comparing the 15 to 21 April 2024 and the 22 to 28 April 2024 periods, it is noted that day-time (maximum) temperatures decreased over most parts of the country though a few Coastal stations recorded slight warming. Night-time (minimum) temperatures increased over some stations including Lodwar, Suba and Kabarak and decreased over Nyahururu, Mandera and Laikipia among others.

Garissa Meteorological Station recorded the highest daily maximum temperature: 36.5⁰C on 23 April 2024 while Nyahururu Meteorological Station recorded the lowest daily minimum temperature: 11.3⁰C on 22 April 2024. The same stations recorded the highest seven-day average maximum temperature and the lowest seven-day average minimum temperature: 35.2⁰C and 12.2⁰C respectively (see **Figure 6**).

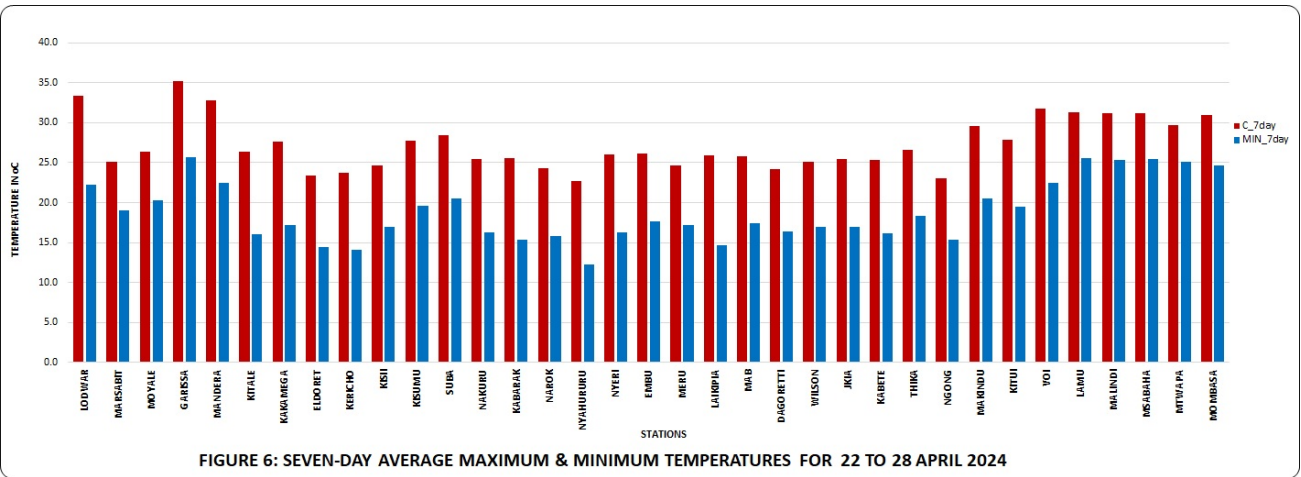


FIGURE 6: SEVEN-DAY AVERAGE MAXIMUM & MINIMUM TEMPERATURES FOR 22 TO 28 APRIL 2024

N.B: This forecast should be used in conjunction with the daily (24-hour) and five-day forecasts issued by this Department. County specific forecasts are available from the offices of respective County Directors of Meteorology.

KEY OF SCIENTIFIC WORDS USED

<i>24-hour rainfall categories</i>	
<i>Range</i>	<i>Category</i>
<5mm	Light
5-20mm	Moderate
20-50mm	Heavy
>50mm	Very heavy

<i>Rainfall coverage</i>	
<i>Term</i>	<i>Meaning</i>
Most places	Between 66% and 100%
Several places	Between 33% and 66%
Few places	Less than 33%

Dr. David Gikungu
DIRECTOR OF METEOROLOGICAL SERVICES