



**REPUBLIC OF KENYA**  
**MINISTRY OF ENVIRONMENT AND FORESTRY**  
**KENYA METEOROLOGICAL DEPARTMENT**

Dagoretti Corner, Ngong Road, P. O. Box 30259, 00100 GPO, Nairobi, Kenya  
**Telephone:** 254 (0) 20 3867880-7, **Fax:** 254 (0) 20 3876955/3877373/3867888,  
**E-mail:** [director@meteo.go.ke](mailto:director@meteo.go.ke), [info@meteo.go.ke](mailto:info@meteo.go.ke); **Website:** <http://www.meteo.go.ke>  
**Biometeorological Services Division**

---

**WEEKLY BIOMETEOROLOGICAL BULLETIN (3<sup>RD</sup> JANUARY - 9<sup>TH</sup> JANUARY 2023)**

*Ref No: KMD/MM/01-2023*

*Issue Date: 02/01/2023*

**1.0 PREAMBLE**

Biometeorology is an interdisciplinary science of interactions between atmospheric processes and living organisms - plants, animals and humans. The Biometeorological Services Division collects, analyzes and interprets Meteorological and Health data in liaison with partners in the Health Sector for advisory development.

The weather information provided is aimed at guiding residents to identify and recognize the likelihood of occurrence of weather related health diseases according to the issued advisories and take necessary action.

**REVIEW FOR LAST WEEK (26<sup>TH</sup> DECEMBER 2022-1<sup>ST</sup> JANUARY, 2023)**

**1.1 High Rainfall**

This section lists stations recorded more than 50mm total rainfall in the last 7 days. This is shown in Table 1 below.

**Table 1:**

Station	Total weekly rainfall(mm)
Eldoret Airport	82.9
Kakamega Met	58.9

**1.2 High Temperatures**

This section lists stations that recorded average temperatures exceeding 35°C in the last 7 days. This is shown in Table 2 below.

**Table 2:**

Station	Average weekly maximum temperature
Wajir Met	36.0°C
Lodwar Met	35.8°C
Garissa Met	35.5°C

Mandera Met	35.5°C
-------------	--------

### 1.3 Low Temperatures

This section lists stations that recorded average temperatures below 10°C in the last 7 days. This is shown in Table 3 below.

**Table 3:**

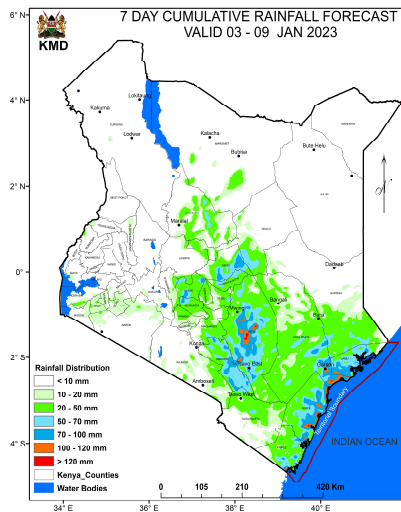
Station	Average weekly minimum temperature
Nyahururu Met	6.2°C

### 1.4 High Winds

This section list stations that recorded winds with speeds of more than 25knots (12.9 metres per sec) in the last 7 days. This was recorded in Marsabit met station.

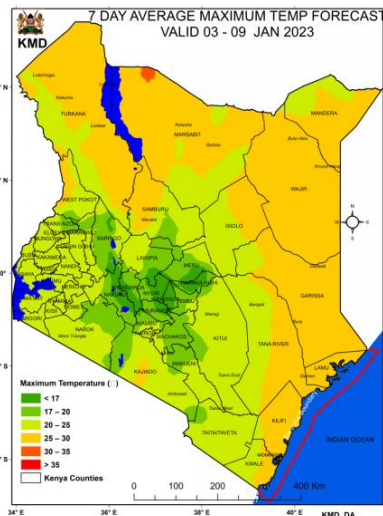
## 2.0 FORECAST FOR 3<sup>RD</sup> JANUARY -9<sup>TH</sup> JANUARY, 2023

### a) Rainfall



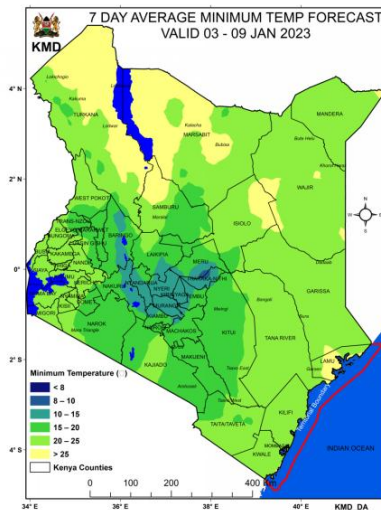
Rainfall more than 50mm is expected over parts of Kitui, Kilifi, Makueni, Meru and Lamu Counties (Tuesday 3<sup>rd</sup> January, 2023 to Monday 9<sup>th</sup> January, 2023)

### b) High Temperature



Maximum Temperatures of more than 35°C are expected over parts of Turkana and Mandera Counties during the forecast period (Tuesday 3<sup>rd</sup> January, 2023 to Monday 9<sup>th</sup> January, 2023).

### c) Low Temperature



Minimum temperature of less than 10°C is expected over parts of Nyeri, Muranga, Baringo , Nakuru, Kirinyaga , Kiambu and Nyandarua Counties, during the forecast period (Tuesday 3<sup>rd</sup> January , 2023 to Monday 9<sup>th</sup> January, 2023).

### d) Winds

Winds of more than 25 knots (12.9m/s) are expected over parts of Marsabit, Mandera, Isiolo, Garissa, Wajir and Turkana Counties, during the forecast period (Tuesday 3<sup>rd</sup> January to Monday 9<sup>th</sup> January, 2023)

## 3.0 Advisories

**i) The areas expected to receive more than 50 mm of weekly total rainfall have a high likelihood of waterborne diseases (e.g. diarrhea) and Vector borne diseases (e.g. Malaria) especially in areas with poor drainage. Residents are advised to be on the lookout for such diseases and take necessary action.**

**ii) Residents living in areas expected to experience temperatures of more than 35°C have a high risk of being infected with skin diseases e.g. skin rash.**

**iii) The areas expected to experience less than 10°C have a high likelihood of cold weather diseases. e.g. Asthma, pneumonia, common cold and flu. Residents are advised to be on the lookout for such diseases and take necessary action.**

**iv) Winds of more than 25 knots (12.9m/s) have a high likelihood of occurrences of cold and flu diseases due to blown dust. These diseases are quite common during the dry weather conditions. Residents are advised to be on the lookout for such diseases and take necessary action.**

**N. B: This forecast is to be used together with the daily (24-hour) forecast issued by this Department.**

Dr Gikungu

**DIRECTOR OF KENYA METEOROLOGICAL DEPARTMENT**