



REPUBLIC OF KENYA
MINISTRY OF ENVIRONMENT, CLIMATE CHANGE AND FORESTRY
KENYA METEOROLOGICAL DEPARTMENT

Dagoretti Corner, Ngong Road, P. O. Box 30259, 00100 GPO, Nairobi, Kenya
Telephone: 254 (0) 20 3867880-7, **Fax:** 254 (0) 20 3876955/3877373/3867888,
E-mail: director@meteo.go.ke, info@meteo.go.ke; **Website:** <http://www.meteo.go.ke>
Biometeorological Services Division

WEEKLY BIOMETEOROLOGICAL BULLETIN (12TH SEPTEMBER – 18TH SEPTEMBER, 2023)

Ref No: KMD/MM/09-2023

Issue Date: 11/09/2023

1.0 PREAMBLE

Biometeorology is an interdisciplinary science of interactions between atmospheric processes and living organisms - plants, animals and human-beings. The Biometeorological Services Division collects, analyzes and interprets Meteorological and Health data in liaison with partners in the Health Sector for advisory development.

The weather information provided is aimed at guiding residents to identify and recognize the likelihood of occurrence of weather related health diseases according to the issued advisories and take necessary action.

REVIEW FOR LAST WEEK (4TH SEPTEMBER – 10TH SEPTEMBER, 2023)

1.1 High Rainfall

This section lists stations recorded more than 50mm total rainfall in the last 7 days. This is shown in Table 1 below.

Table 1:

Station	Total weekly Rainfall
Kakamega Met	136.5mm
Kisii Met	131.6mm
Eldoret Met	117.0mm
Eldoret Airport	115.5mm
Kisumu Met	90.3mm
Kitale Met	87.7mm
Kericho Met	62.4mm
Kabarak Met	52.7mm

1.2 High Temperatures

This section lists stations that recorded average temperatures exceeding 35°C in the last 7 days. This is shown in Table 2 below.

Table 2:

Station	Average weekly maximum temperature
Mandera Met	37.5°C
Lodwar Met	35.8°C

1.3 Low Temperatures

This section lists stations that recorded average temperatures below 10°C in the last 7 days. This is shown in Table 3 below.

Table 3:

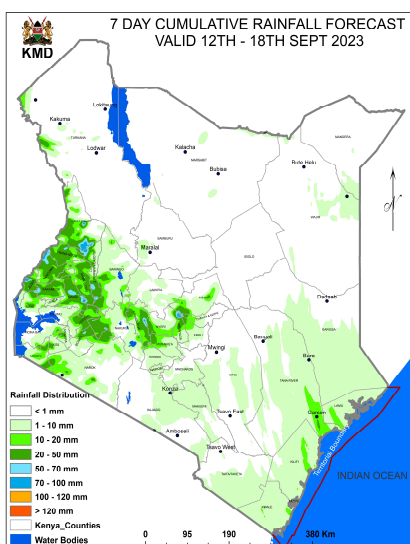
Station	Average weekly minimum temperature
Nyahururu Met	7.4°C

1.3 High Winds

This section list stations that recorded winds with speeds of more than 25 knots (12.9 metres per sec) in the last 7 days. This was recorded in Mandera, Lodwar, Marsabit, Garissa and Malindi met station.

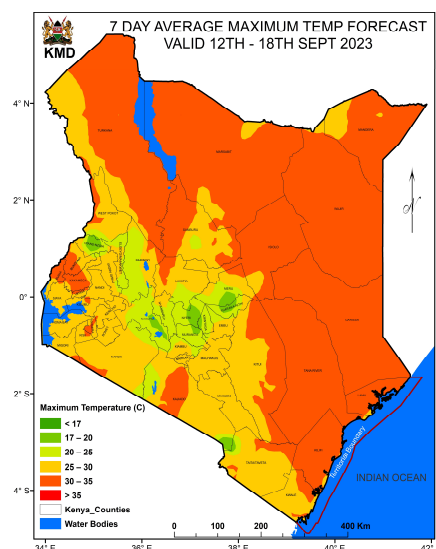
2.0 FORECAST FOR 12TH SEPTEMBER- 18TH SEPTEMBER, 2023

a) Rainfall



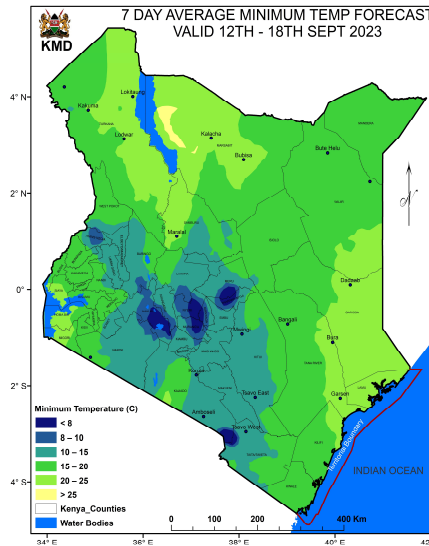
Rainfall exceeding 50mm is expected over parts of Trans Nzoia (Kitale), Kakamega, Migori, Elgeyo Marakwet(Eldoret), Bungoma, West Pokot and Kericho counties (Tuesday 12th Sept, 2023 to Monday 18th September, 2023).

b) High Temperature



Maximum Temperatures of exceeding 35°C is expected over parts Mandera and Turkana (Lodwar), Counties during the forecast period (Tuesday 12th September, 2023 to Monday 18th September, 2023).

c) Low Temperature



Minimum temperature of less than 10°C is expected over parts of Nyandarua and Nakuru Counties (Nyahururu), during the forecast period (Tuesday 12th September, 2023 to Monday 18th September, 2023).

c) Winds

Winds of more than 25 knots (12.9m/s) are expected over parts of Mandera, Turkana (Lodwar), Marsabit, Lamu, Kilifi (Malindi), Isiolo and Garissa Counties, during the forecast period (Tuesday 12th September, 2023 to Monday 18th September, 2023)

3.0 Advisories

i) Areas expected to receive more than 50 mm of weekly total rainfall have a high likelihood of occurrence of waterborne diseases (e.g. diarrhea) and Vector borne diseases (e.g. Malaria), especially in areas with poor drainage. Residents are advised to be on the lookout for such diseases and take necessary action.

ii) Residents living in areas expected to experience temperatures of more than 35°C have a high risk of being infected with skin diseases e.g. skin rash.

iii) Areas expected to experience less than 10°C have a high likelihood of occurrence of cold weather diseases. e.g. Asthma, pneumonia, common cold and flu. Residents are advised to be on the lookout for such diseases and take necessary action.

iv) Winds of more than 25 knots (12.9m/s). These winds are strong enough and able to blow dust especially over bare grounds. The blown dust may increase the risk of respiratory infections e.g. Cold and flu diseases. These diseases are quite common during the dry weather conditions. Residents are advised to be on the lookout for such diseases and take necessary protective measures.

N. B: This forecast is to be used together with the daily (24-hour) forecast issued by this Department.

Dr Gikungu

DIRECTOR OF KENYA METEOROLOGICAL DEPARTMENT