



**REPUBLIC OF KENYA**

**MINISTRY OF ENVIRONMENT, CLIMATE CHANGE AND FORESTRY**

**KENYA METEOROLOGICAL DEPARTMENT**

*Dagoretti Corner, Ngong Road, P. O. Box 30259, 00100 GPO, Nairobi, Kenya*

*Telephone: 254 (0) 20 3867880-7, Fax: 254 (0) 20 3876955/3877373/3867888,*

*E-mail: [director@meteo.go.ke](mailto:director@meteo.go.ke), [info@meteo.go.ke](mailto:info@meteo.go.ke); Website:<http://www.meteo.go.ke>*

**Biometeorological Services Division**

---

**WEEKLY BIOMETEOROLOGICAL BULLETIN (14<sup>TH</sup> NOVEMBER –20<sup>TH</sup> NOVEMBER, 2023)**

*Ref No: KMD/MM/11-2023*

*Issue Date:13/11/2023*

**1.0 PREAMBLE**

Biometeorology is an interdisciplinary science of interactions between atmospheric processes and living organisms - plants, animals and human-beings. The Biometeorological Services Division collects, analyzes and interprets Meteorological and Health data in liaison with partners in the Health Sector for advisory development.

The weather information provided is aimed at guiding residents to identify and recognize the likelihood of occurrence of weather related health diseases according to the issued advisories and take necessary action.

**Summary**

Heavy rainfall can cause flooding and water contamination, leading to the water-borne diseases such as cholera and typhoid fever. Mosquitoes and other insects that carry diseases such as dengue fever, malaria and Zika virus thrive in warm and humid conditions, which can be created by heavy rainfall. Rain can lead to increase in respiratory illnesses and pneumonia due to dampness and mold growth.

**REVIEW FOR LAST WEEK (6<sup>TH</sup> NOVEMBER – 12<sup>TH</sup> NOVEMBER, 2023)**

**1.1 High Rainfall**

This section lists stations recorded more than 50mm total rainfall in the last 7 days. This is shown in Table 1 below.

**Table 1:**

<b>Station</b>	<b>Total weekly Rainfall</b>
Garissa Met	195.8mm
Laikipia Met	160.8mm
Makindu Met	153.7mm
Machakos Met	143.2mm
Wilson Airport	132.2mm
Dagoretti C	130.4mm
Meru Met	122.7mm
Kabete Met	111.1mm
M.A.B Met	91.2mm

Ngong Met	78.7mm
Kakamega Met	69.6mm
JKIA	67.8mm
Nyeri Met	61.4mm
Narok Met	60.1mm
Kangema Met	54.6mm

### 1.2 High Temperatures

This section lists stations that recorded average temperatures exceeding 35°C in the last 7 days. All stations recorded average temperatures **not** exceeding 35°C

### 1.3 Low Temperatures

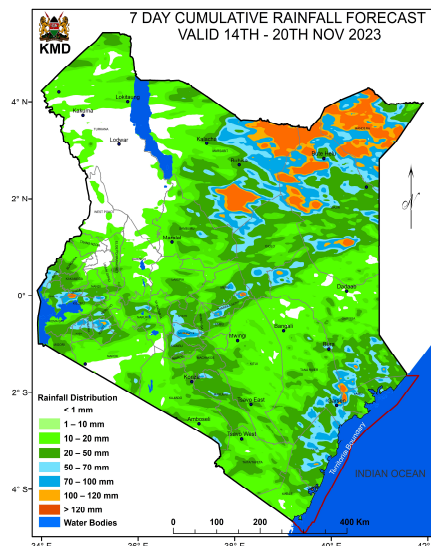
This section lists stations that recorded average temperatures below 10°C in the last 7 days. All stations recorded average temperatures exceeding 10°C

### 1.4 High Winds

This section list stations that recorded winds with speeds of more than 25 knots (12.9 metres per sec) in the last 7 days. This was recorded in Marsabit met station.

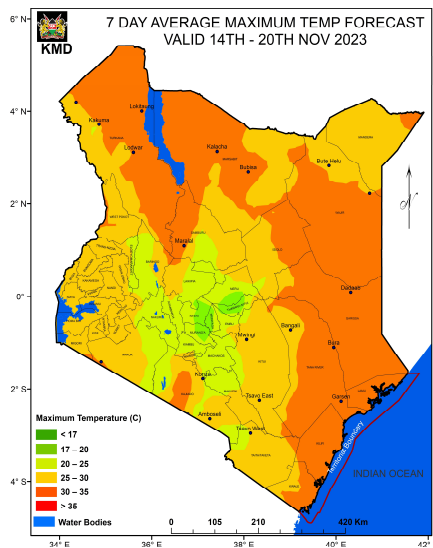
## 2.0 FORECAST FOR 14<sup>TH</sup> NOVEMBER- 20<sup>TH</sup> NOVEMBER, 2023

### a) Rainfall



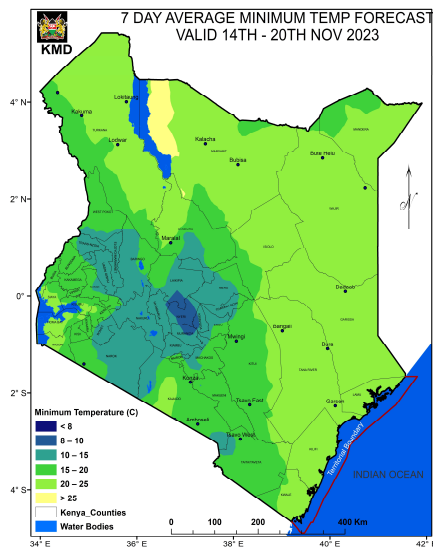
Rainfall exceeding 50mm is expected over parts of Meru, Tharaka Nithi, Makueni, Kericho, Kisii, Kilifi, Kiambu(Thika) Kisumu, Kakamega, Wajir, Mandera and Marsabit counties during the forecast period (Tuesday 14<sup>th</sup> November, 2023 to Monday 20<sup>th</sup> November, 2023).

### b) High Temperature



Maximum Temperatures not exceeding 35°C is expected over parts of the Country during the forecast period (Tuesday 14<sup>th</sup> November 2023 to Monday 20<sup>th</sup> November, 2023).

### c) Low Temperature



Minimum temperature of less than 10°C is expected over parts of Nyandarua (Nyahururu) and Nakuru Counties during the forecast period (Tuesday 14<sup>th</sup> November, 2023 to Monday 20<sup>th</sup> November, 2023).

### c) Winds

Winds of more than 25 knots (12.9m/s) are expected over parts of Eldoret and Marsabit Counties, during the forecast period (Tuesday 14<sup>th</sup> November, 2023 to Monday 20<sup>th</sup> November, 2023). **Less risk of dust related diseases since we are in the rainy season in most parts of the Country.**

## 3.0 Advisories

**i) Areas expected to receive more than 50 mm of weekly total rainfall have a** high likelihood of occurrence of waterborne diseases (e.g. diarrhea) and Vector borne diseases (e.g. Malaria), especially in areas with poor drainage. Residents are advised to be on the lookout for such diseases and take necessary action.

**ii) Residents living in areas expected to experience temperatures of more than 35°C** have a high risk of being infected with skin diseases e.g. skin rash.

**iii) Areas expected to experience less than 10°C** have a high likelihood of occurrence of cold weather diseases. e.g. Asthma, pneumonia, common cold and flu. Residents are advised to be on the lookout for such diseases and take necessary action.

**iv) Winds of more than 25 knots (12.9m/s).** These winds are strong enough and able to blow dust especially over bare grounds. The blown dust may increase the risk of respiratory infections e.g. Cold and flu diseases. These diseases are quite common during the dry weather conditions. Residents are advised to be on the lookout for such diseases and take necessary protective measures.

**N. B: This forecast is to be used together with the daily (24-hour) forecast issued by this Department.**

Dr Gikungu

**DIRECTOR OF KENYA METEOROLOGICAL DEPARTMENT**