



REPUBLIC OF KENYA
MINISTRY OF ENVIRONMENT AND FORESTRY
KENYA METEOROLOGICAL DEPARTMENT

Dagoretti Corner, Ngong Road, P. O. Box 30259, 00100 GPO, Nairobi, Kenya
Telephone: 254 (0) 20 3867880-7, **Fax:** 254 (0) 20 3876955/3877373/3867888,
E-mail: director@meteo.go.ke, info@meteo.go.ke; **Website:** <http://www.meteo.go.ke>
Biometeorological Services Division

WEEKLY BIOMETEOROLOGICAL BULLETIN (14TH MARCH -20TH MARCH 2023)

Ref No: KMD/MM/03-2023

Issue Date: 13/03/2023

1.0 PREAMBLE

Biometeorology is an interdisciplinary science of interactions between atmospheric processes and living organisms - plants, animals and human-beings. The Biometeorological Services Division collects, analyzes and interprets Meteorological and Health data in liaison with partners in the Health Sector for advisory development.

The weather information provided is aimed at guiding residents to identify and recognize the likelihood of occurrence of weather related health diseases according to the issued advisories and take necessary action.

Summary

Strong winds can blow dust where people exposed to deteriorating air quality may experience respiratory-related symptoms such as coughing, irritation in the throat, rapid or shallow breathing or general discomfort in the chest, skin or eye irritation.

REVIEW FOR LAST WEEK (6TH MARCH -12TH MARCH, 2023)

1.1 High Rainfall

This section lists stations recorded more than 50mm total rainfall in the last 7 days. This is shown in Table 1 below.

Table 1:

Station	Total weekly Rainfall
Kisii Met	67.8mm

1.2 High Temperatures

This section lists stations that recorded average temperatures exceeding 35°C in the last 7 days. This is shown in Table 2 below.

Table 2:

Station	Average weekly maximum temperature
Mandera Met	38.7°C
Lodwar Met	38.0°C
Garissa Met	37.3°C

1.3 Low Temperatures

This section lists stations that recorded average temperatures below 10°C in the last 7 days. This is shown in Table 3 below.

Table 3:

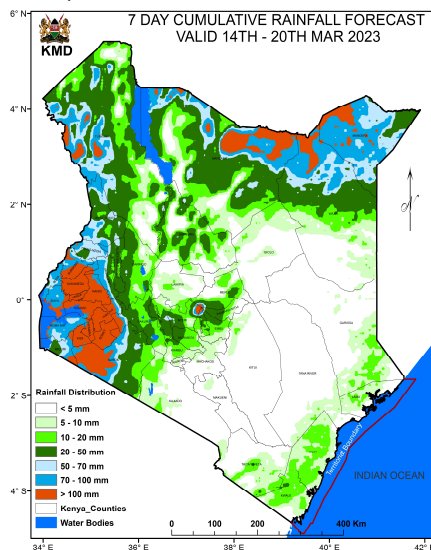
Station	Average weekly minimum temperature
Nyahururu Met	7.4°C

1.4 High Winds

This section list stations that recorded winds with speeds of more than 25 knots (12.9 metres per sec) in the last 7 days. This was recorded in Marsabit met station.

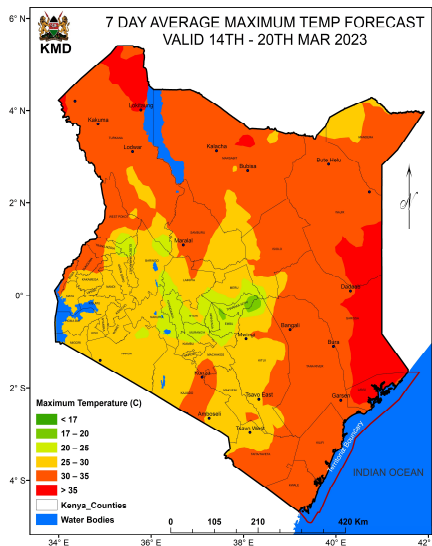
2.0 FORECAST FOR 14TH MARCH- 20TH MARCH, 2023

a) Rainfall



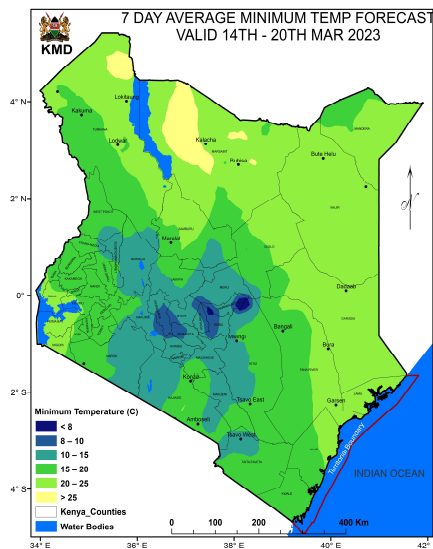
Rainfall more than 50mm is expected over parts of Narok, Kisii, Nyamira, Bomet, Kericho, Kisumu, Nandi, Vihiga, Kakamega, Bungoma, Turkana, Mandera, Wajir and Marsabit Counties (Tuesday 14th March, 2023 to Monday 20th March, 2023).

b) High Temperature



Maximum Temperatures of more than 35°C are expected over parts of Wajir and Garissa Counties during the forecast period (Tuesday 14th March, 2023 to Monday 20th March, 2023).

c) Low Temperature



Minimum temperature of less than 10°C is expected over parts of Nyandarua, Nyeri and Muranga Counties, during the forecast period (Tuesday 14th March, 2023 to Monday 20th March, 2023).

d) Winds

Winds of more than 25 knots (12.9m/s) are expected over parts of Marsabit, Mandera, Kajiado, Lamu, Mombasa, Mtwapa, Msabaha and Turkana Counties, during the forecast period (Tuesday 14th March, 2023 to Monday 20th March, 2023)

3.0 Advisories

i) Areas expected to receive more than 50 mm of weekly total rainfall have a high likelihood of occurrence of waterborne diseases (e.g. diarrhea) and Vector borne diseases (e.g. Malaria), especially in areas with poor drainage. Residents are advised to be on the lookout for such diseases and take necessary action.

ii) Residents living in areas expected to experience temperatures of more than 35°C have a high risk of being infected with skin diseases e.g. skin rash.

iii) Areas expected to experience less than 10°C have a high likelihood of occurrence of cold weather diseases. e.g. Asthma, pneumonia, common cold and flu. Residents are advised to be on the lookout for such diseases and take necessary action.

iv) Winds of more than 25 knots (12.9m/s). These winds are strong enough and able to blow dust especially over bare grounds. The blown dust may increase the risk of respiratory infections e.g. Cold and flu diseases. These diseases are quite common during the dry weather conditions. Residents are advised to be on the lookout for such diseases and take necessary protective measures.

N. B: This forecast is to be used together with the daily (24-hour) forecast issued by this Department.

Dr Gikungu

DIRECTOR OF KENYA METEOROLOGICAL DEPARTMENT