



REPUBLIC OF KENYA

MINISTRY OF ENVIRONMENT AND FORESTRY

KENYA METEOROLOGICAL DEPARTMENT

Dagoretti Corner, Ngong Road, P. O. Box 30259, 00100 GPO, Nairobi, Kenya

Telephone: 254 (0) 20 3867880-7, **Fax:** 254 (0) 20 3876955/3877373/3867888,

E-mail: director@meteo.go.ke, info@meteo.go.ke; **Website:** <http://www.meteo.go.ke>

Biometeorological Services Division

WEEKLY BIOMETEOROLOGICAL BULLETIN (25TH OCTOBER- 31ST OCTOBER, 2022)

Ref No: KMD/MM/1-2022

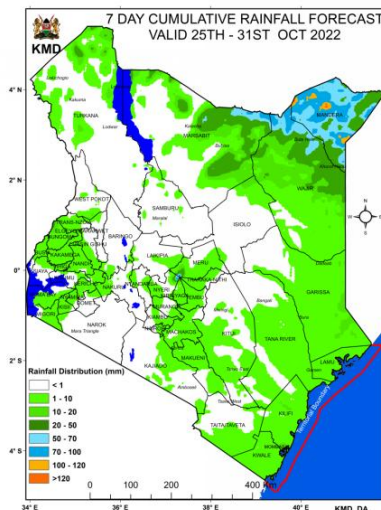
Issue Date; 24/10/2022

1 PREAMBLE

Biometeorology is an interdisciplinary science of interactions between atmospheric processes and living organisms - plants, animals and humans. The Bio-Meteorological Section collects, analyzes, interprets meteorological data and issues the human health related forecast in partnership with the health sector.

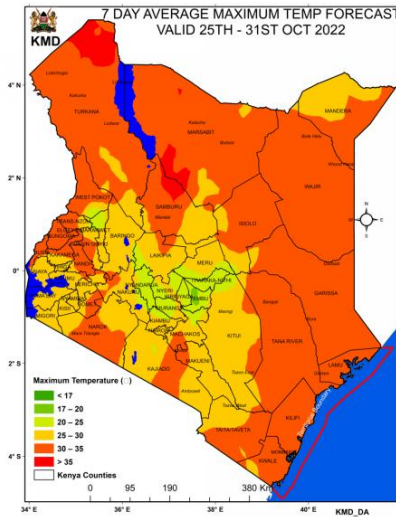
2 FORECAST FOR 25TH OCTOBER – 31ST OCTOBER, 2022

a) Rainfall



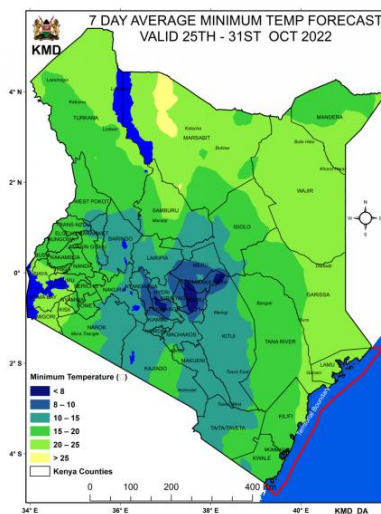
Rainfall more than 50mm is expected over parts of Mandera County (Tue 25th October, 2022 to Mon 31st October, 2022).

b) High Temperature



Maximum Temperatures of more than 35°C are expected over parts of Turkana (Lodwar) and Samburu Counties during the forecast period (Tue 25th October, 2022 to Mon 31st October, 2022).

c) Low Temperature



Minimum Temperature of less than 10°C is expected over parts of Nyandarua (Nyahururu), Embu, Tharaka Nithi Counties, during the forecast period (Tue 25th October, 2022 to Mon 31st October, 2022).

d) Winds

Winds of more than 25 knots (12.9m/s) are expected over parts of Marsabit, Wajir, Turkana (Lodwar), Isiolo, Eldoret, Malindi, Msabaha, Mombasa and Garissa Counties, during the forecast period (Tue 25th October, 2022 to Mon 31st October, 2022)

REVIEW FOR LAST WEEK (17TH OCTOBER – 23RD OCTOBER, 2022)

2.1 High Rainfall

This section lists stations recorded more than 50mm total rainfall in the last 7 days. This is shown in Table 1 below.

Table 1:

| Station | Total weekly Rainfall |
|--------------|-----------------------|
| Kakamega Met | 96.4mm |
| Kisii Met | 79.3mm |
| Kericho Met | 70.2mm |

2.2 High Temperatures

This section lists stations that recorded average Temperatures exceeding 35°C in the last 7 days. This is shown in Table 2 below.

Table 2:

| Station | Average weekly Maximum Temperature |
|----------------------|------------------------------------|
| Lodwar (Turkana) Met | 36.4°C |

2.3 Low Temperatures

This section lists stations that recorded average Temperatures below 10°C in the last 7 days. This is shown in Table 3 below.

Table 3:

| Station | Average weekly Minimum Temperature |
|---------------|------------------------------------|
| Nyahururu Met | 5.7°C |

2.4 High Winds

This section list stations that recorded winds with speeds of more than 25knots (12.9 metres per sec) in the last 7 days. This was recorded in Marsabit Met station.

3. Advisory

The areas expected to receive more than 50 mm of weekly total rainfall have a high risk of waterborne (e.g. diarrhea) and Vector borne (e.g. Malaria) diseases especially in areas with poor drainage. Residents are advised to be on the lookout for such diseases and take necessary action.

The areas expected to experience more than 35°C therefore high likelihood of skin diseases e.g. skin rash.

The areas expected to experience less than 10°C have a high likelihood of cold weather diseases. e.g. Asthma, pneumonia, common cold and flu. Residents are advised to be on the lookout for such diseases and take necessary action.

Winds of more than 25 knots (12.9m/s) have a high likelihood of cold and flu diseases due to blown dust especially during dry season. Residents are advised to be on the lookout for such diseases and take necessary action.

N.B: This forecast is to be used together with the daily (24-hour) forecast issued by this Department.

Dr Gikungu

DIRECTOR OF KENYA METEOROLOGICAL DEPARTMENT