



REPUBLIC OF KENYA

MINISTRY OF ENVIRONMENT, CLIMATE CHANGE AND FORESTRY

KENYA METEOROLOGICAL DEPARTMENT

Dagoretti Corner, Ngong Road, P. O. Box 30259, 00100 GPO, Nairobi, Kenya

Telephone: 254 (0) 20 3867880-7, Fax: 254 (0) 20 3876955/3877373/3867888,

E-mail: director@meteo.go.ke, info@meteo.go.ke; Website: <http://www.meteo.go.ke>

Biometeorological Services Division

WEEKLY BIOMETEOROLOGICAL BULLETIN (16TH APRIL–22ND APRIL, 2024)

Ref No: KMD/MM/04-2024

Issue Date: 15/04/2024

1.0 PREAMBLE

Biometeorology is an interdisciplinary science of interactions between atmospheric processes and living organisms - plants, animals and human-beings. The Biometeorological Services Division collects, analyzes and interprets Meteorological and Health data in liaison with partners in the Health Sector for advisory development.

The weather information provided is aimed at guiding residents to identify and recognize the likelihood of occurrence of weather-related health diseases according to the issued advisories and take necessary action.

Summary

Heavy rainfall can cause flooding and water contamination, leading to the water-borne diseases such as cholera and typhoid fever. Mosquitoes and other insects that carry diseases such as dengue fever, malaria and Zika virus thrive in warm and humid conditions, which can be created by heavy rainfall. Rain can lead to increase in respiratory illnesses and pneumonia due to dampness and mold growth.

REVIEW FOR LAST WEEK (8TH APRIL, 2024– 14TH APRIL, 2024)

1.1 High Rainfall

This section lists stations recorded more than 50mm total rainfall in the last 7 days. This is shown in Table 1 below.

Table 1:

Station	Total weekly Rainfall
Ngong Met	214.6mm
Kitui Met	179.7mm
Dagoretti C	172.7mm
Wilson A/port	154.6mm
Kangema Met	144.1mm
Kabete Met	125.1mm
Embu Met	121.5mm
Kisii Met	109.2mm
Meru Met	96.6mm
Narok Met	84.1mm

Machakos Met	74.8mm
M.A. B	62.5mm
Nyeri Met	61.1mm
Suba Met	60.8mm
Kakamega Met	60.0mm
Kisumu Met	57.6mm
Kabarak Met	56.5mm
Thika Met	53.3mm
Kericho Met	53.1mm

1.2 High Temperatures

This section lists stations that recorded average temperatures exceeding 35°C in the last 7 days. This is shown in Table 2 below.

Table 2:

Station	Average weekly maximum temperature
Mandera Met	38.0°C
Garissa Met	36.3°C

1.3 Low Temperatures

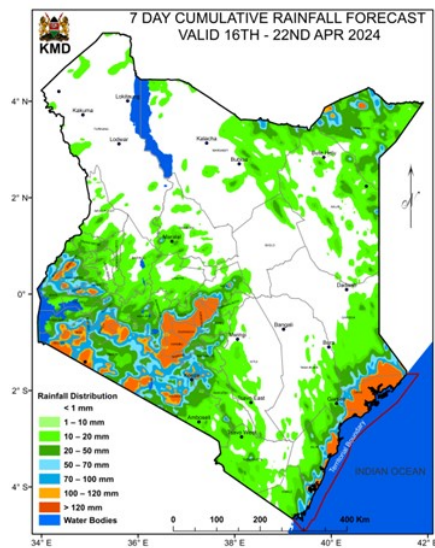
This section lists stations that recorded average temperatures below 10°C in the last 7 days. All stations recorded temperatures exceeding 10°C.

1.4 High Winds

This section list stations that recorded winds with speeds of more than 25 knots (12.9 metres per sec) in the last 7 days. This was recorded in Marsabit met station.

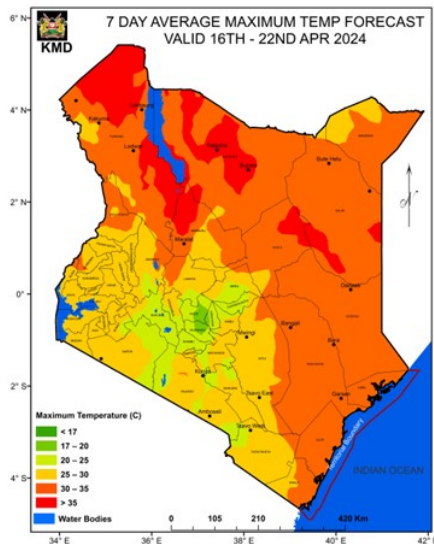
2.0 FORECAST FOR 16TH APRIL, 2024– 22ND APRIL, 2024

a) Rainfall



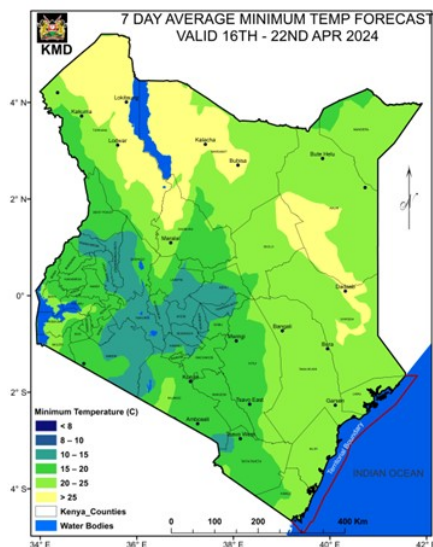
Rainfall amounts exceeding 50mm is expected over parts of Kakamega, Bungoma, Bomet, Busia, Siaya, Kericho, Migori, Vihiga, Nyamira, Mumias, Kiambu, Murang'a, Narok, Kisumu, Garissa, Homabay, Bomet, Kiambu, Kajiado, Lamu, Nairobi, Kisii, Kwale, Mandera and Kilifi (Mtwapa) counties during the forecast period (Tuesday 16th April, 2024 to Monday 22nd April, 2024).

b) High Temperature



Maximum Temperatures exceeding 35°C is expected over parts of Turkana (Lodwar), Samburu, Marsabit, Isiolo and Wajir Counties during the forecast period (Tuesday 16th April, 2024 to Monday 22nd April, 2024).

c) Low Temperature



Minimum temperature of less than 10°C is expected over parts of Nyandarua (Nyahururu) county during the forecast period (Tuesday 16th April, 2024 to Monday 22nd April, 2024).

c) Winds

Winds of more than 25 knots (12.9m/s) are expected over parts of Turkana (Lodwar), Marsabit, Lamu, Mombasa and Kilifi (Mtwapa, Malindi, Msabaha) Counties during the forecast period (Tuesday 16th April, 2024 to Monday 22nd April, 2024). During rainy season the winds have less risk on the human health since there is no dust.

3.0 Advisories

i) Areas expected to receive more than 50 mm of weekly total rainfall have a high likelihood of occurrence of waterborne diseases (e.g. diarrhea) and Vector borne diseases (e.g. Malaria), especially in areas with poor drainage. Residents are advised to be on the lookout for such diseases and take necessary action.

ii) Residents living in areas expected to experience temperatures of more than 35°C have a high risk of being infected with skin diseases e.g. skin rash.

iii) Areas expected to experience less than 10°C have a high likelihood of occurrence of cold weather diseases. e.g. Asthma, pneumonia, common cold and flu. Residents are advised to be on the lookout for such diseases and take necessary action.

iv) Winds of more than 25 knots (12.9m/s). These winds are strong enough and able to blow dust especially over bare grounds. The blown dust may increase the risk of respiratory infections e.g. Cold and flu diseases. These diseases are quite common during the dry weather conditions. Residents are advised to be on the lookout for such diseases and take necessary protective measures.

N. B: This forecast is to be used together with the daily (24-hour) forecast issued by this Department.

Kennedy Thiong'o

FOR; DIRECTOR OF KENYA METEOROLOGICAL DEPARTMENT