



**REPUBLIC OF KENYA**  
**MINISTRY OF ENVIRONMENT AND FORESTRY**  
**KENYA METEOROLOGICAL DEPARTMENT**

Dagoretti Corner, Ngong Road, P. O. Box 30259, 00100 GPO, Nairobi, Kenya  
**Telephone:** 254 (0) 20 3867880-7, **Fax:** 254 (0) 20 3876955/3877373/3867888,  
**E-mail:** [director@meteo.go.ke](mailto:director@meteo.go.ke), [info@meteo.go.ke](mailto:info@meteo.go.ke); **Website:** <http://www.meteo.go.ke>  
**Biometeorological Services Division**

**WEEKLY BIOMETEOROLOGICAL BULLETIN (15<sup>TH</sup> -21<sup>ST</sup> JUNE, 2021)**

*Ref No: KMD/MM/1-2021*

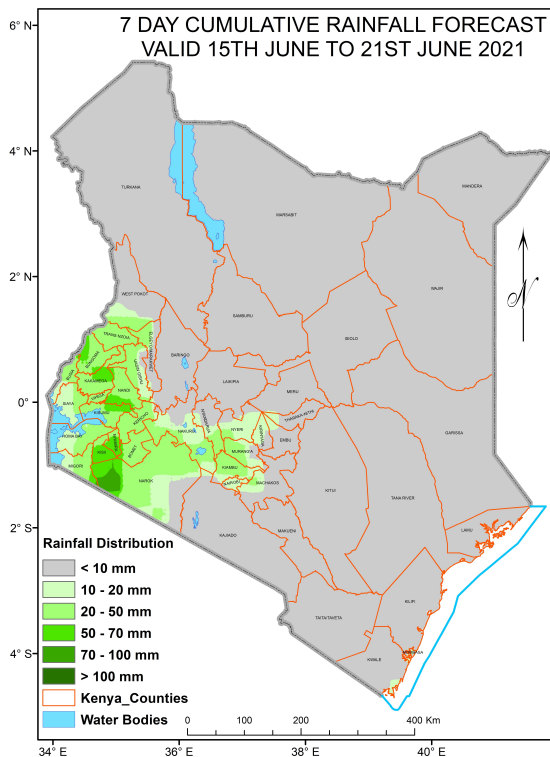
*Issue Date; 14/06/2021*

**1 PREAMBLE**

Biometeorology is an interdisciplinary science of interactions between atmospheric processes and living organisms - plants, animals and humans. The Bio Meteorological Section collects, analyzes, interprets meteorological data and issues the human health related forecast in partnership with the health sector.

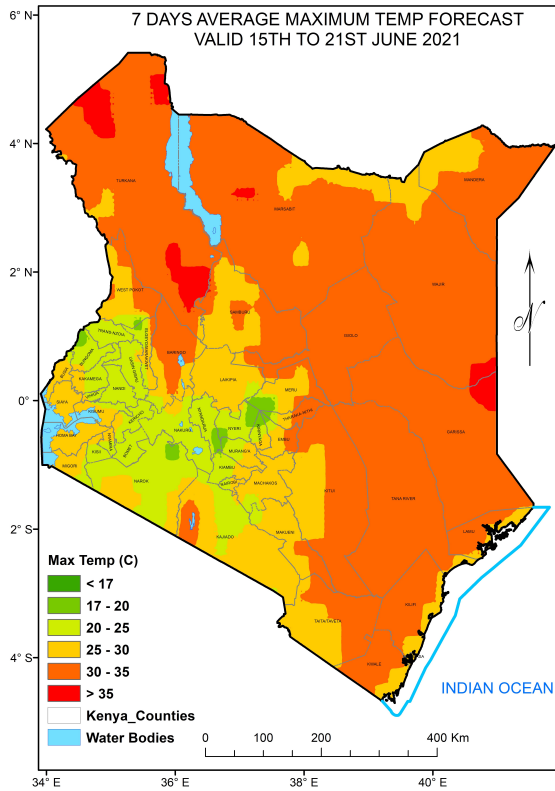
**2 FORECAST FOR 15<sup>TH</sup> -21<sup>ST</sup> JUNE, 2021**

**a) Rainfall**



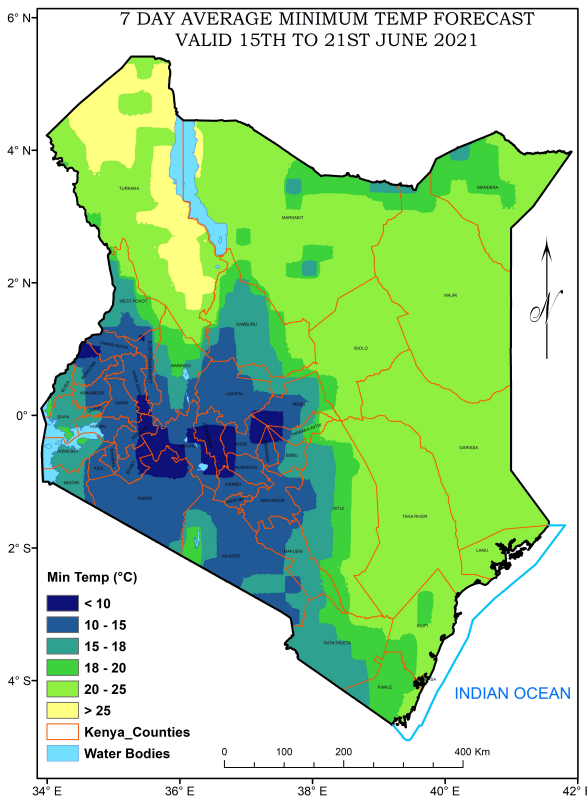
Rainfall exceeding 50mm is expected in parts of Narok, Kisii, Nyamira Counties, during the forecast period (Tue 15<sup>th</sup> June to Mon 21<sup>st</sup> June, 2021)

## b) High Temperature



Maximum Temperatures of more than 35°C are expected in parts of Turkana (Lodwar), Wajir, Garissa and Mandera Counties, during the forecast period (Tue 15<sup>th</sup> June to Mon 21<sup>st</sup> June, 2021).

## c) Low Temperature



Minimum Temperature of less than 10°C is expected in parts of Nyandarua (Nyahururu), Nyeri, Meru, Kericho, Bomet and Narok Counties, during the forecast period (Tue 15<sup>th</sup> June to Mon 21<sup>st</sup> June, 2021).

#### **d) Winds**

Winds of more than 25 knots (12.9m/s) are expected over parts of Marsabit, Garissa, Wajir, Isiolo, Tanariver, Kilifi (Malindi), Lamu and Voi Counties, during the forecast period (Tue 15<sup>th</sup> June to Mon 21<sup>st</sup> June, 2021).

### **REVIEW FOR LAST WEEK (7<sup>TH</sup> -13<sup>TH</sup> JUNE, 2021)**

#### **2.1 High Rainfall**

This section lists stations recorded more than 50 mm total rainfall in the last 7 days. This is shown in Table 1 below.

**Table 1:**

<b>Station</b>	<b>Total weekly Rainfall</b>
Lamu Met	68.2mm

#### **2.2 High Temperatures**

This section lists stations that recorded Average Temperatures exceeding 35°C in the last 7 days. This is shown in Table 2 below.

**Table 2:**

<b>Station</b>	<b>Average weekly Maximum Temperature</b>
Lodwar Met	35.3°C
Mandera Met	35.1°C

#### **2.3 Low Temperatures**

This section lists stations that recorded Average Temperatures below 10°C in the last 7 days. This is shown in Table 3 below.

**Table 3:**

<b>Station</b>	<b>Average weekly Minimum Temperature</b>
Nyahururu Met	5.2°C
Kericho Met	9.6°C

#### **2.3 High Winds**

This section list stations that recorded winds with speeds of more than 25knots (12.9 metres per sec) in the last 7 days. This was recorded in Marsabit Met stations.

### 3 Advisory

**The areas expected to receive more than 50 mm of weekly total rainfall have a** high risk of waterborne (e.g. diarrhea) and Vector borne (e.g. Malaria) diseases especially in areas with poor drainage. Residents are advised to be on the lookout for such diseases and take necessary action.

**The areas expected to experience more than 35°C** therefore high likelihood of skin diseases e.g. skin rash.

**The areas expected to experience less than 10°C** have a high likelihood of cold weather diseases. e.g. Asthma, pneumonia, common cold and flu. Residents are advised to be on the lookout for such diseases and take necessary action.

**Winds of more than 25 knots (12.9m/s)** have a high likelihood of cold and flu diseases due to blown dust especially during dry season.

**N.B: This forecast is to be used together with the daily (24-hour) forecast issued by this Department.**

Stella Aura, MBS

**DIRECTOR OF KENYA METEOROLOGICAL DEPARTMENT**