



**REPUBLIC OF KENYA**

**MINISTRY OF ENVIRONMENT, CLIMATE CHANGE AND FORESTRY**

**KENYA METEOROLOGICAL DEPARTMENT**

Dagoretti Corner, Ngong Road, P. O. Box 30259, 00100 GPO, Nairobi, Kenya

Telephone: 254 (0) 20 3867880-7, Fax: 254 (0) 20 3876955/3877373/3867888,

E-mail: [director@meteo.go.ke](mailto:director@meteo.go.ke), [info@meteo.go.ke](mailto:info@meteo.go.ke); Website: <http://www.meteo.go.ke>

**Biometeorological Services Division**

---

**WEEKLY BIOMETEOROLOGICAL BULLETIN (30<sup>TH</sup> APRIL–6<sup>TH</sup> MAY, 2024)**

Ref No: KMD/MM/04-2024

Issue Date: 29/04/2024

**1.0 PREAMBLE**

Biometeorology is an interdisciplinary science of interactions between atmospheric processes and living organisms - plants, animals and human-beings. The Biometeorological Services Division collects, analyzes and interprets Meteorological and Health data in liaison with partners in the Health Sector for advisory development.

The weather information provided is aimed at guiding residents to identify and recognize the likelihood of occurrence of weather-related health diseases according to the issued advisories and take necessary action.

**Summary**

Heavy rainfall can cause flooding and water contamination, leading to the water-borne diseases such as cholera and typhoid fever. Mosquitoes and other insects that carry diseases such as dengue fever, malaria and Zika virus thrive in warm and humid conditions, which can be created by heavy rainfall. Rain can lead to increase in respiratory illnesses and pneumonia due to dampness and mold growth.

**REVIEW FOR LAST WEEK (22<sup>ND</sup> APRIL, 2024– 28<sup>TH</sup> APRIL, 2024)**

**1.1 High Rainfall**

This section lists stations recorded more than 50mm total rainfall in the last 7 days. This is shown in Table 1 below.

**Table 1:**

Station	Total weekly Rainfall
Embu Met	304.8mm
Kabete Met	293.9mm
Moi airbase	277.6mm
Kangema Met	255.9mm
Wilson A/port	219.6mm
Ngong Met	212.1mm
Marsabit Met	186.9mm
Thika Met	184.7mm
Dagoretti C	177.6mm
Machakos Met	155.5mm

Laikipia Met	155.3mm
Kitui Met	149.6mm
JKIA	125.3mm
Narok Met	121.8mm
Kericho Met	113.7mm
Kabarak Met	97.8mm
Kisumu Met	90.8mm
Lamu Met	85.2mm
Eldoret A/port	85.1mm
Nyahururu Met	84.5mm
Kitale Met	83.3mm
Suba Met	82.4mm
Nakuru Met	80.7mm
Makindu Met	75.6mm
Meru Met	73.1mm
Lodwar Met	69.1mm
Msabaha Met	65.2mm
Moyale Met	61.2mm

## 1.2 High Temperatures

This section lists stations that recorded average temperatures exceeding 35°C in the last 7 days. All stations recorded average weekly temperatures not exceeding 35°C

## 1.3 Low Temperatures

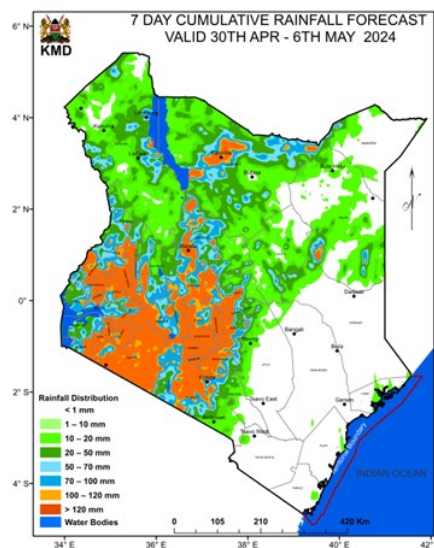
This section lists stations that recorded average temperatures below 10°C in the last 7 days. All stations recorded average weekly temperatures exceeding 10°C.

## 1.4 High Winds

This section list stations that recorded winds with speeds of more than 25 knots (12.9 metres per sec) in the last 7 days. This was recorded in Marsabit and Garissa met stations.

## 2.0 FORECAST FOR 30<sup>TH</sup> APRIL, 2024– 6<sup>TH</sup> MAY, 2024

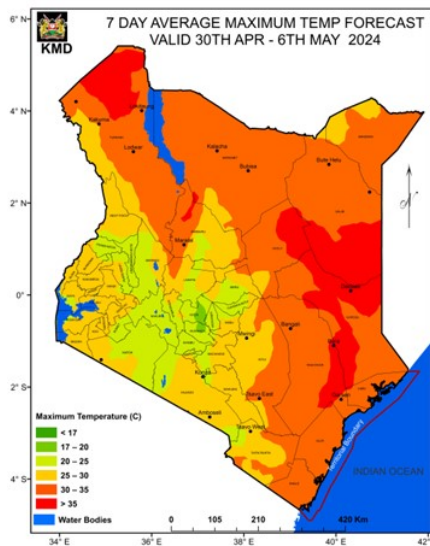
### a) Rainfall



Rainfall amounts exceeding 50mm is expected over parts of Kakamega, Bomet, Vihiga, Nyamira, Kiambu, Murang’ a, Narok, Nairobi, Kisii, Kirinyaga, Nandi, Eldoret, Kitale, Machakos, Nyandarua

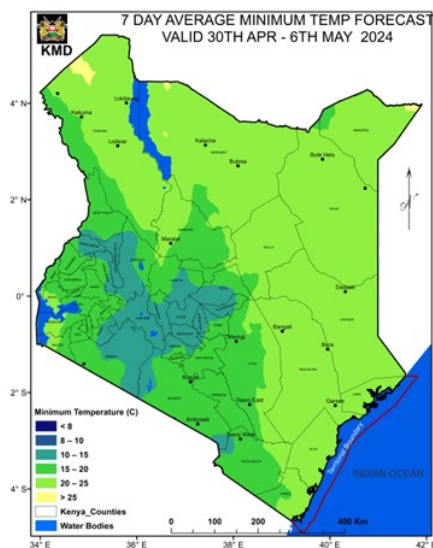
(Nyahururu), Kericho, Isiolo, Meru, Embu, Bungoma, Laikipia, Turkana (Lodwar) and Kajiado counties during the forecast period (Tuesday 30<sup>th</sup> April, 2024 to Monday 6<sup>th</sup> May, 2024).

### b) High Temperature



Maximum Temperatures exceeding 35°C is expected over parts of Turkana (Lodwar) and Garissa Counties during the forecast period (Tuesday 30<sup>th</sup> April, 2024 to Monday 6<sup>th</sup> May, 2024).

### c) Low Temperature



Minimum temperature of less than 10°C is expected over parts of Nyandarua (Nyahururu) county during the forecast period (Tuesday 30<sup>th</sup> April, 2024 to Monday 6<sup>th</sup> May, 2024).

### c) Winds

Winds of more than 25 knots (12.9m/s) are expected over parts of Marsabit, Lamu, Mombasa and Kilifi (Mtwapa, Malindi, Msabaha ) Counties during the forecast period (Tuesday 30<sup>th</sup> April, 2024 to Monday 6<sup>th</sup> May, 2024). During rainy season the winds have less risk on the human health since there is no dust.

### 3.0 Advisories

**i) Areas expected to receive more than 50 mm of weekly total rainfall have a** high likelihood of occurrence of waterborne diseases (e.g. diarrhea) and Vector borne diseases (e.g. Malaria), especially in areas with poor drainage. Residents are advised to be on the lookout for such diseases and take necessary action.

**ii) Residents living in areas expected to experience temperatures of more than 35°C** have a high risk of being infected with skin diseases e.g. skin rash.

**iii) Areas expected to experience less than 10°C** have a high likelihood of occurrence of cold weather diseases. e.g. Asthma, pneumonia, common cold and flu. Residents are advised to be on the lookout for such diseases and take necessary action.

**iv) Winds of more than 25 knots (12.9m/s).** These winds are strong enough and able to blow dust especially over bare grounds. The blown dust may increase the risk of respiratory infections e.g. Cold and flu diseases. These diseases are quite common during the dry weather conditions. Residents are advised to be on the lookout for such diseases and take necessary protective measures.

**N. B: This forecast is to be used together with the daily (24-hour) forecast issued by this Department.**

Dr Gikungu

**DIRECTOR OF KENYA METEOROLOGICAL DEPARTMENT**