



KENYA
METEOROLOGICAL
DEPARTMENT

For further info:

Contact: Daniel M. Mbithi

Mobile No. 0715255171

Email: mbithi_d@yahoo.com

County Director of Meteorological Services Kitui County

Weekly Weather forecast for Kitui County

1.1 PART I: WEEKLY FORECAST FOR THE PERIOD 12th to 18th August 2025 Weather forecast Table

Sub County	Ward	Probable Total weekly amount (mm)	Probable weather Notes: Light rains <1-5 mm; Moderate rains 5-20 mm; Heavy rains 20-50 mm; Very heavy rains >50 mm							Winds (km/h kilometers per hour)	Temp (Tmax °C & Tmin °C)
			Tue	Wed	Thur	Fri	Sat	Sun	Mon	Weekly	Weekly
Mwingi West	Nguutani	<5 mm	Partly cloudy	Partly cloudy	Partly cloudy	Partly cloudy	Light drizzle	Light drizzle	Cloudy	Easterly 25.2 km/h	Max 24-31 °C Min 14-20°C
	Kyome/Thaana	<5 mm	Partly cloudy	Partly cloudy	Partly cloudy	Partly cloudy	Light drizzle	Light drizzle	Cloudy		
	Kiomo/Kyethani	<5 mm	Partly cloudy	Partly cloudy	Partly cloudy	Partly cloudy	Light drizzle	Light drizzle	Cloudy		
	Migwani	<5 mm	Partly cloudy	Partly cloudy	Partly cloudy	Partly cloudy	Light drizzle	Light drizzle	Cloudy		
Mwingi North	Ngomeni	<5 mm	Partly cloudy	Partly cloudy	Partly cloudy	Partly cloudy	Light drizzle	Light drizzle	Cloudy	Easterly 32.4 km/h	Max 27-35 °C Min 17-22 °C
	Kyuso	<5 mm	Partly cloudy	Partly cloudy	Partly cloudy	Partly cloudy	Light drizzle	Light drizzle	Cloudy		
	Tseikuru	<5 mm	Partly cloudy	Partly cloudy	Partly cloudy	Partly cloudy	Light drizzle	Light drizzle	Cloudy		
	Tharaka	<5 mm	Partly cloudy	Partly cloudy	Partly cloudy	Partly cloudy	Light drizzle	Light drizzle	Cloudy		
	Mumoni	<5 mm	Partly cloudy	Partly cloudy	Partly cloudy	Partly cloudy	Light drizzle	Light drizzle	Cloudy		
Mwingi Central	Central	<5 mm	Partly cloudy	Partly cloudy	Partly cloudy	Partly cloudy	Light drizzle	Light drizzle	Cloudy		
	Kivou	<5 mm	Partly cloudy	Partly cloudy	Partly cloudy	Partly cloudy	Light drizzle	Light drizzle	Cloudy		

Sub County	Ward	Probable Total weekly amount (mm)	Probable weather Notes: Light rains <1-5 mm; Moderate rains 5-20 mm; Heavy rains 20-50 mm; Very heavy rains >50 mm							Winds (km/h kilometers per hour)	Temp (Tmax °C & Tmin °C)
			Tue	Wed	Thur	Fri	Sat	Sun	Mon	Weekly	Weekly
	Mui	<5 mm	Partly cloudy	Partly cloudy	Partly cloudy	Partly cloudy	Light drizzle	Light drizzle	Cloudy	Easterly 25.2 km/h	Max 26-33 °C Min 16-20 °C
	Waita	<5 mm	Partly cloudy	Partly cloudy	Partly cloudy	Partly cloudy	Light drizzle	Light drizzle	Cloudy		
	Nuu	<5 mm	Partly cloudy	Partly cloudy	Partly cloudy	Partly cloudy	Light drizzle	Light drizzle	Cloudy		
	Nguni	<5 mm	Partly cloudy	Partly cloudy	Partly cloudy	Partly cloudy	Light drizzle	Light drizzle	Cloudy		
Kitui South	Ikanga/Kyatune	<5 mm	Partly cloudy	Partly cloudy	Partly cloudy	Partly cloudy	Light drizzle	Light drizzle	Cloudy	Easterly 28.8 km/h	Max 27-33 °C Min 16-20 °C
	Mutomo/Kibwea	<5 mm	Partly cloudy	Partly cloudy	Partly cloudy	Partly cloudy	Light drizzle	Light drizzle	Cloudy		
	Kanziko/Simisi	<5 mm	Partly cloudy	Partly cloudy	Partly cloudy	Partly cloudy	Light drizzle	Light drizzle	Cloudy		
	Mutha	<5 mm	Partly cloudy	Partly cloudy	Partly cloudy	Partly cloudy	Light drizzle	Light drizzle	Cloudy		
	Ikutha	<5 mm	Partly cloudy	Partly cloudy	Partly cloudy	Partly cloudy	Light drizzle	Light drizzle	Cloudy		
	Athi	<5 mm	Partly cloudy	Partly cloudy	Partly cloudy	Partly cloudy	Light drizzle	Light drizzle	Cloudy		
Kitui East	Chuluni	<5 mm	Partly cloudy	Partly cloudy	Partly cloudy	Partly cloudy	Light drizzle	Light drizzle	Cloudy	Easterly 25.2 km/h	Max 26-34 °C Min 17-21 °C
	Nzambani	<5 mm	Partly cloudy	Partly cloudy	Partly cloudy	Partly cloudy	Light drizzle	Light drizzle	Cloudy		
	Mutito/Kaliku	<5 mm	Partly cloudy	Partly cloudy	Partly cloudy	Partly cloudy	Light drizzle	Light drizzle	Cloudy		
	Zombe/Mwitika	<5 mm	Partly cloudy	Partly cloudy	Partly cloudy	Partly cloudy	Light drizzle	Light drizzle	Cloudy		
	Voo/Kyamatu	<5 mm	Partly cloudy	Partly cloudy	Partly cloudy	Partly cloudy	Light drizzle	Light drizzle	Cloudy		
	Endau/Malalani	<5 mm	Partly cloudy	Partly cloudy	Partly cloudy	Partly cloudy	Light drizzle	Light drizzle	Cloudy		
Kitui Rural	Mbitini	<5 mm	Partly cloudy	Partly cloudy	Partly cloudy	Partly cloudy	Light drizzle	Light drizzle	Cloudy	Easterly 28.8 km/h	Max 26-31 °C Min 14-19 °C
	Kisasi	<5 mm	Partly cloudy	Partly cloudy	Partly cloudy	Partly cloudy	Light drizzle	Light drizzle	Cloudy		
	Kyangangi	<5 mm	Partly cloudy	Partly cloudy	Partly cloudy	Partly cloudy	Light drizzle	Light drizzle	Cloudy		
	Yatta/Kwa Vonza	<5 mm	Partly cloudy	Partly cloudy	Partly cloudy	Partly cloudy	Light drizzle	Light drizzle	Cloudy		
Kitui West	Kauwi	<5 mm	Partly cloudy	Partly cloudy	Partly cloudy	Partly cloudy	Light drizzle	Light drizzle	Cloudy	Easterly 25.2 km/h	Max 23-30 °C Min 12-18 °C
	Mutonguni	<5 mm	Partly cloudy	Partly cloudy	Partly cloudy	Partly cloudy	Light drizzle	Light drizzle	Cloudy		
	Matinyani	<5 mm	Partly cloudy	Partly cloudy	Partly cloudy	Partly cloudy	Light drizzle	Light drizzle	Cloudy		
	Kwa Mutonga/Kithumula	<5 mm	Partly cloudy	Partly cloudy	Partly cloudy	Partly cloudy	Light drizzle	Light drizzle	Cloudy		
	Kyangwithya East	<5 mm	Partly cloudy	Partly cloudy	Partly cloudy	Partly cloudy	Light drizzle	Light drizzle	Cloudy		

Sub County	Ward	Probable Total weekly amount (mm)	Probable weather Notes: Light rains <1-5 mm; Moderate rains 5-20 mm; Heavy rains 20-50 mm; Very heavy rains >50 mm							Winds (km/h kilometers per hour)	Temp (Tmax °C & Tmin °C)
			Tue	Wed	Thur	Fri	Sat	Sun	Mon	Weekly	Weekly
Kitui Central	Kyangwithya West	<5 mm	Partly cloudy	Partly cloudy	Partly cloudy	Partly cloudy	Light drizzle	Light drizzle	Cloudy	Easterly 25.2 km/h	Max 24-32 °C Min 14-19 °C
	Township	<5 mm	Partly cloudy	Partly cloudy	Partly cloudy	Partly cloudy	Light drizzle	Light drizzle	Cloudy		
	Mulango	<5 mm	Partly cloudy	Partly cloudy	Partly cloudy	Partly cloudy	Light drizzle	Light drizzle	Cloudy		
	Miambani	<5 mm	Partly cloudy	Partly cloudy	Partly cloudy	Partly cloudy	Light drizzle	Light drizzle	Cloudy		

1.2 Review for July 2025

July 2025 marked the peak of cold season across Kitui county. Most parts of the county remained generally dry with intermittent cool and partly cloudy conditions and occasional light rains over high ground areas. Both daytime (Maximum) and night time (Minimum) temperatures were warmer than normal over most parts of the county. Strong southerly to south-easterly winds with speeds exceeding 25 knots (12.86 m/s) were experienced occasionally over the county during the month.

1.3 Outlook for August 2025

The August 2025 rainfall forecast has been developed through regression analysis of Sea Surface Temperatures (SSTs) and SST gradients, combined with projections of global SST evolution, upper-air circulation patterns over Western Kenya and the Coastal region, and consideration of climatological norms as illustrated in the rainfall climatology map for August in Annex II. The month of August marks the end of the June-July-August cold season over Kitui county. The county is expected to remain generally dry and Sunny. Cool and partly cloudy conditions with occasional light rains over high ground areas is expected over the county.

1.4 PART II: FURTHER ADVISORIES

SUMMARY ABOUT THE WEEKLY FORECAST:

We expect partly cloudy condition during the nights, chilly and partly cloudy mornings breaking into sunny intervals in the afternoons with a small chance (probability <33%) of drizzle over the high ground areas. Maximum temperatures are expected to range from 23°C - 35°C, while minimum temperatures are expected to range from 12°C - 22°C. Strong southerly to south-easterly winds with speeds exceeding 25 knots (12.86 m/s) are expected to persist in most parts of the County. *Community members advised to inculcate the culture of being “weather – ready”, “climate – smart” and “water – wise” as we navigate the unfamiliar and chaotic environment of a changing climate. This will help them adapt to a changing climate while at the same time mitigating the adverse effects of Climate Change and Variability, hence becoming more resilient to the vagaries of Climate Change.* In light of this weather forecast, farmers are also advised to consult with respective local extension officers from the County Ministry of Agriculture and Livestock at Ward and Sub-county level for more advice on the best farm practices.

Note: 1 mm of rainfall is equivalent to 1 litre of rainfall per square meter.

KEY OF SCIENTIFIC WORDS USED

Rainfall categories	
Range	Category
<5 mm	Light
5 - 20mm	Moderate
20 - 50mm	Heavy
>50mm	Very heavy
Rainfall coverage	
Term	Meaning
Most Places	Between 66% and 100%
Several Places	Between 33% and 66%
Few Places	Below 33%
<p>Ushauri wa Idara ya Utabiri wa Hali ya Hewa: Msimu wa baridi wa June-July-August (JJA) unaendelea kuisha katika Kaunti ya Kitui. Wakulima wanashauriwa waendeleee kuvuna chakula chao na napia kuianika vizuri kwa jua hili kuepukana na athari za sumu kuvu yaani 'aflotoxin'. Pia wanashauriwa wanywe maji moto kwa wingi na kuvaa nguo za nje zinazoleta joto mwilini kama vile kanzu, koti, kofia, mitandio (scarves) na glovu au shati (mittens), masikio (earmuffs), suti za muungano (union suits) na pia soksi joto.</p>	

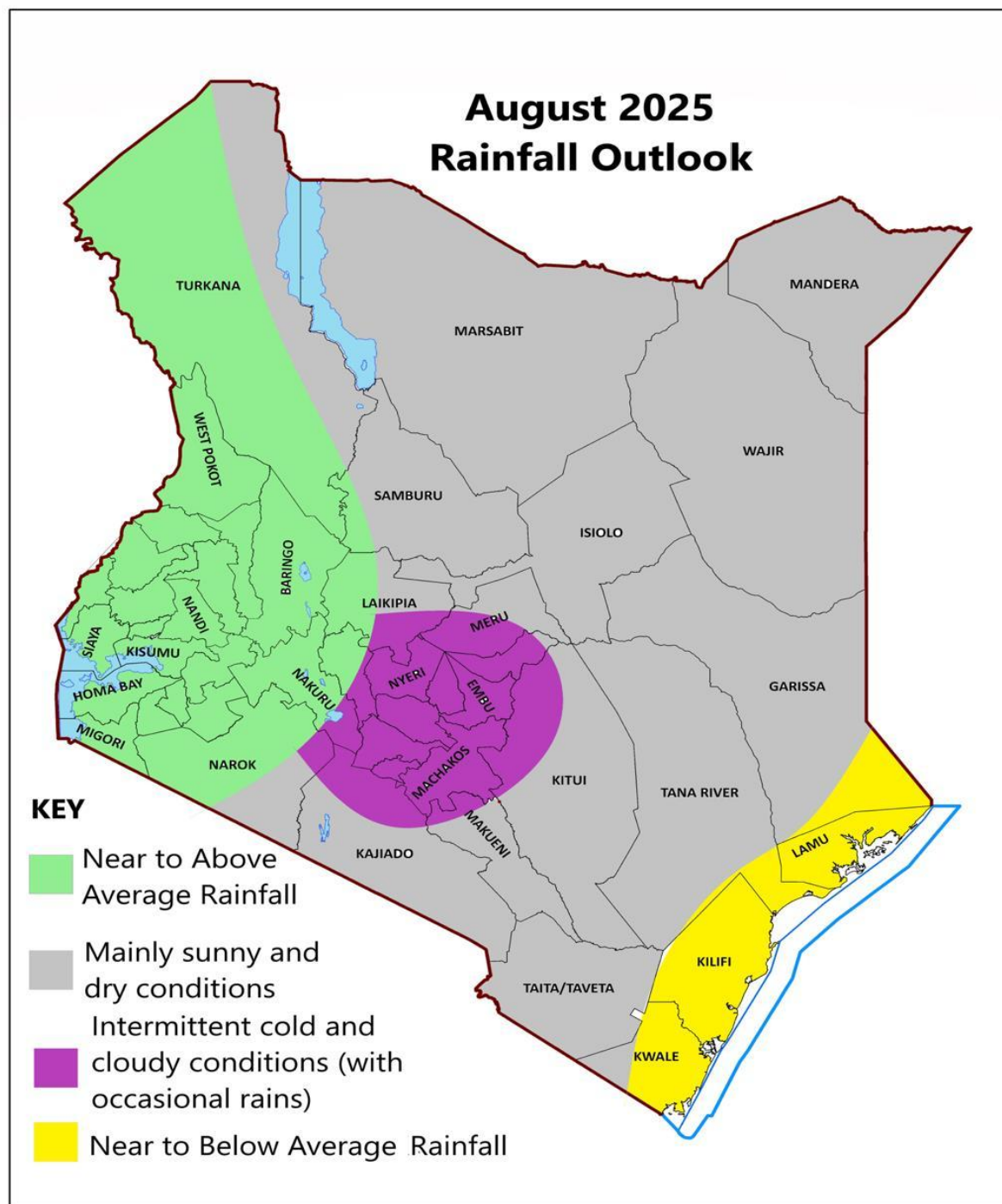
For further information, please contact:



Daniel M. Mbithi
County Director of Meteorological Services
Mobile: 0715255171
Email: mbithi_d@yahoo.com

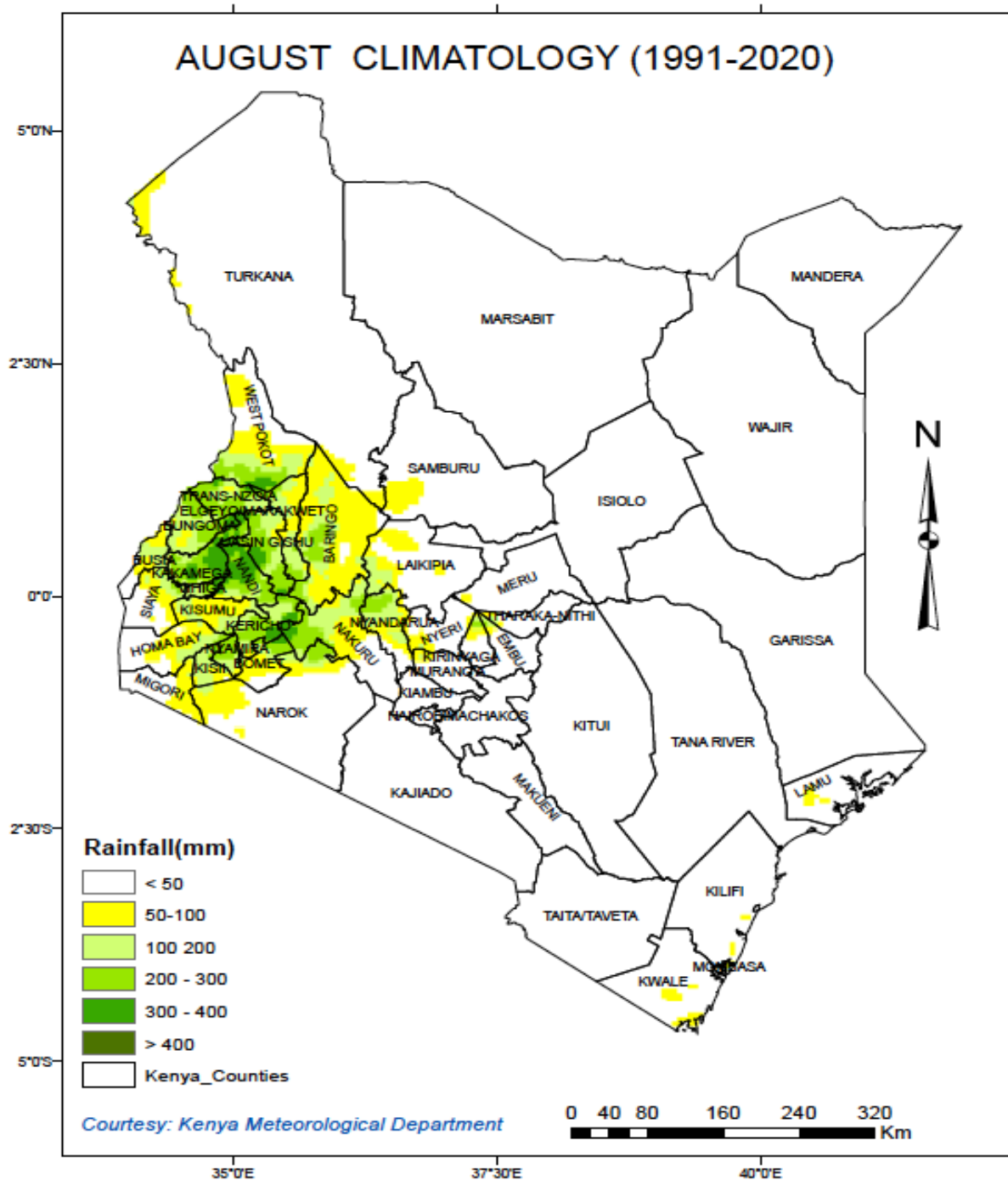
You can find more information about the climate and weather in Kenya on the KMD website <http://www.meteo.go.ke/>

Annex I: Rainfall forecast for the month of August 2025



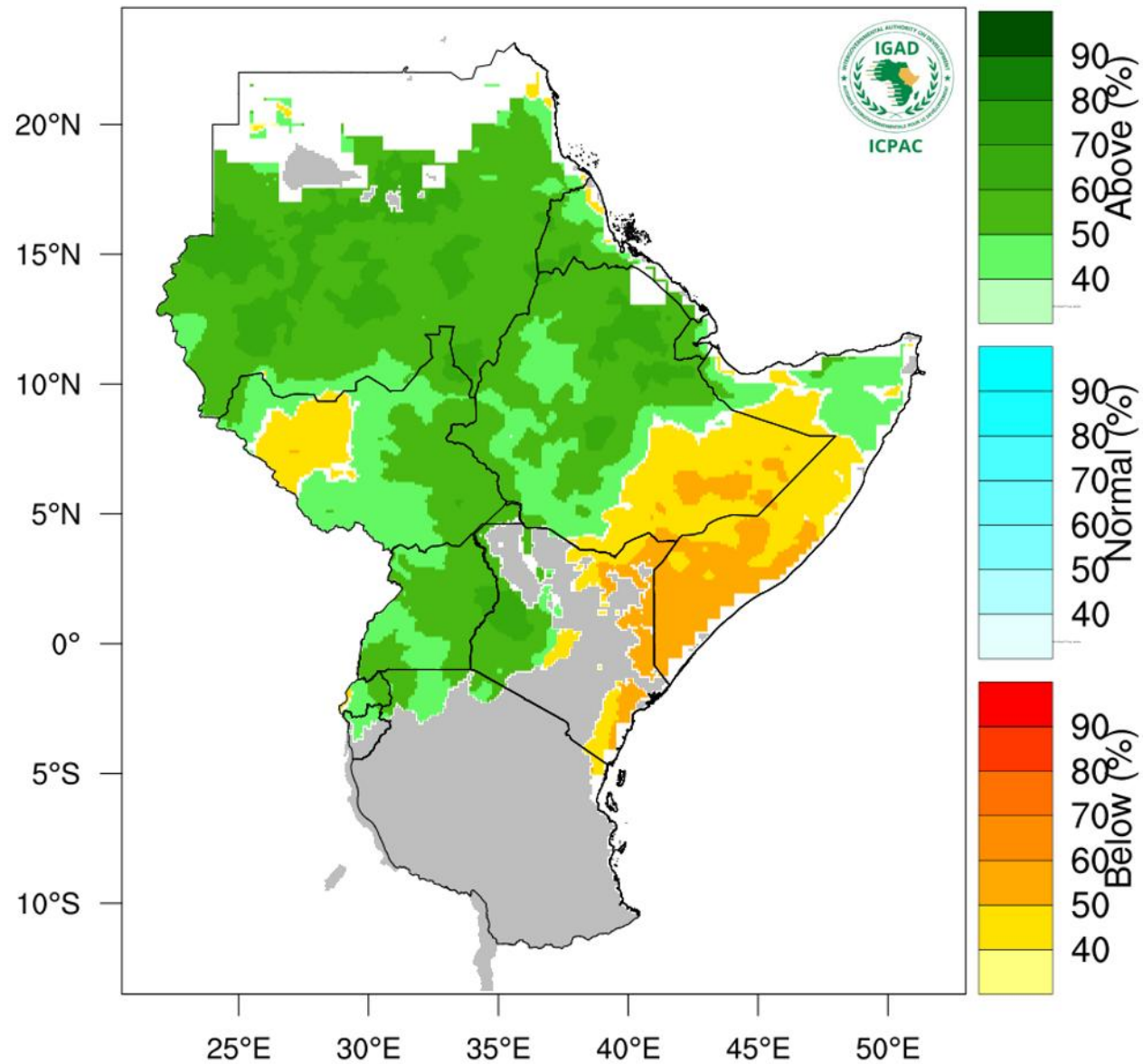
NB: Below normal rainfall expected over most places during the month of August 2025 in the County

Annex II: Rainfall climatology for the month of August 2025



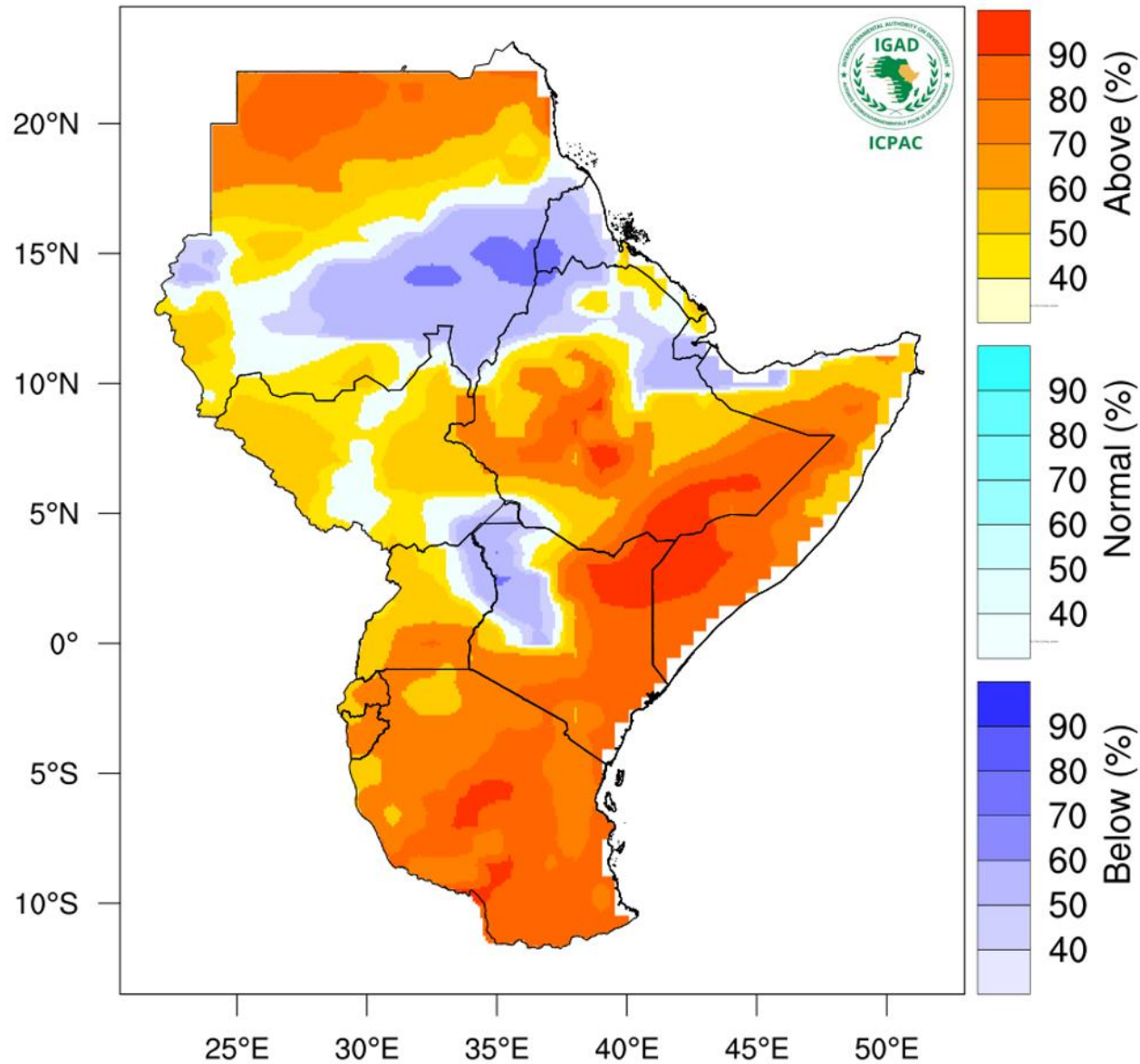
NB: Drier than normal conditions expected over most places during the month of August 2025 in the County

Rainfall Probabilistic Forecast for Aug – Oct 2025



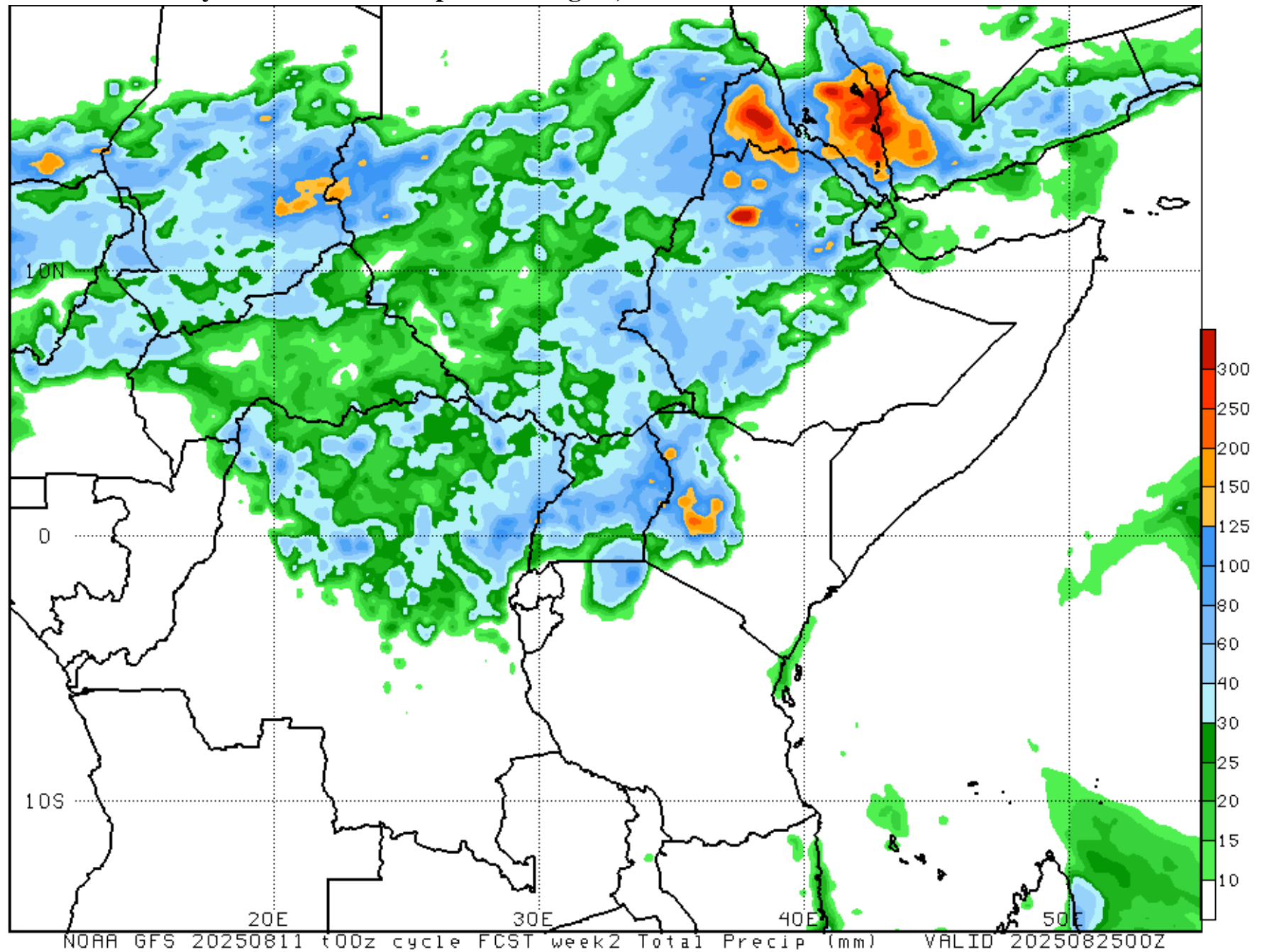
NB: Drier than usual conditions expected over most parts of the County between August to October 2025

Temperature Probabilistic Forecast for Aug - Oct 2025



NB: Warmer than usual conditions indicated over most parts of Kitui County between August to October 2025

Annex V: Fourteen days rainfall forecast up to 25th August, 2025



NB: Drier than normal conditions expected over most parts of the County between 11th to 25th August, 2025