

Our Ref: MET/7/324

Date: 18th August 2025

WEEKLY WEATHER FORECAST FOR 19TH TO 25TH AUGUST 2025 & REVIEW FOR 11TH TO 17TH AUGUST 2025

SUMMARY

Weather Forecast for 19th to 25th August 2025

- Rainfall is expected in several parts of the country especially the Highlands East and West of the Rift Valley and North-western Kenya.
- Intermittent cold and cloudy conditions are likely to occur over some parts of the Highlands East and West of the Rift Valley, the South-eastern lowlands and the Rift Valley.

Weather Review for 11th to 17th August 2025

- Rainfall was recorded in a few parts of the country.
- Day-time (maximum) temperatures increased over some stations including Moyale, Embu and Wajir and decreased over others like Nyahururu, Kakamega and Kisii.
- Night-time (minimum) temperatures increased over a number of stations such as Makindu, Kitui and Malindi and decreased over Kericho, Nyahururu and Kakamega among others.

1 FORECAST FOR 19TH TO 25TH AUGUST 2025

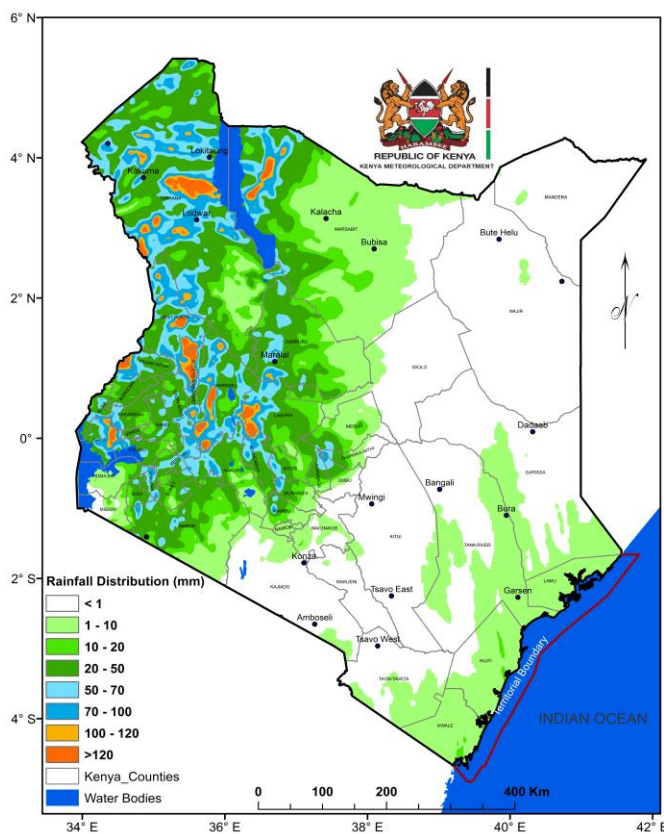


Figure 1: Forecasted Seven-Day Total Rainfall for 19th to 25th August 2025.

Rainfall is expected in several parts of the country especially the Highlands East and West of the Rift Valley and North-western Kenya, as shown in **Figure 1**. However, rainfall intensities and spatial coverage are likely to reduce as the forecast period progresses.

Intermittent cold and cloudy conditions are likely to occur over some parts of the Highlands East and West of the Rift Valley, the South-eastern lowlands and the Rift Valley.

Daytime (maximum) average temperatures of more than 30°C are expected in much of North-eastern Kenya, as depicted in **Figure 2**.

Night-time (minimum) average temperatures are expected to be less than 10°C in some parts of the Highlands East of the Rift Valley, the Central Rift Valley and in the vicinity of Mt. Kilimanjaro, as illustrated in **Figure 3**.

Strong southerly to south-easterly winds with speeds exceeding 25 knots (12.86 m/s) are expected over the Coast (and Kenya's territorial waters), the South-eastern lowlands, North-eastern and North-western Kenya.

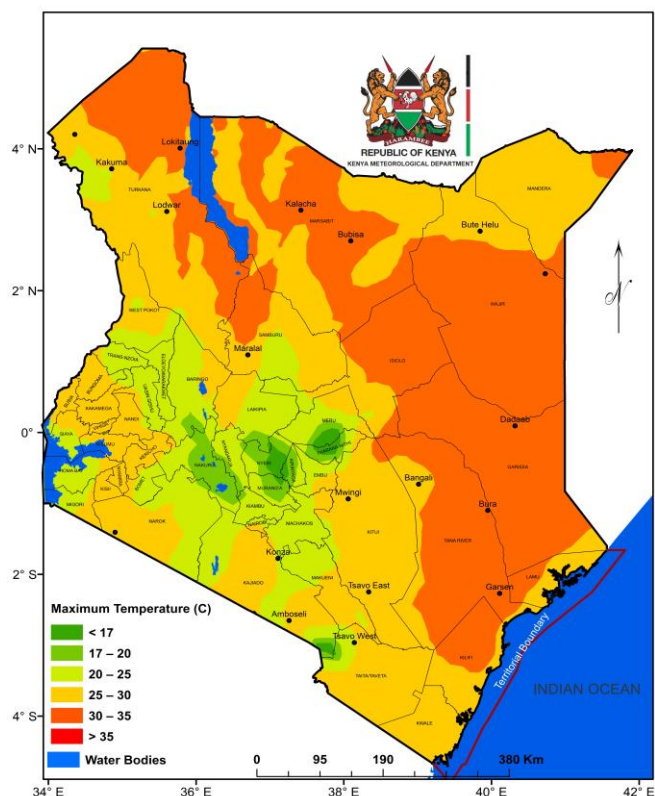


Figure 2: Forecasted Average Maximum Temperatures for 19th to 25th August 2025.

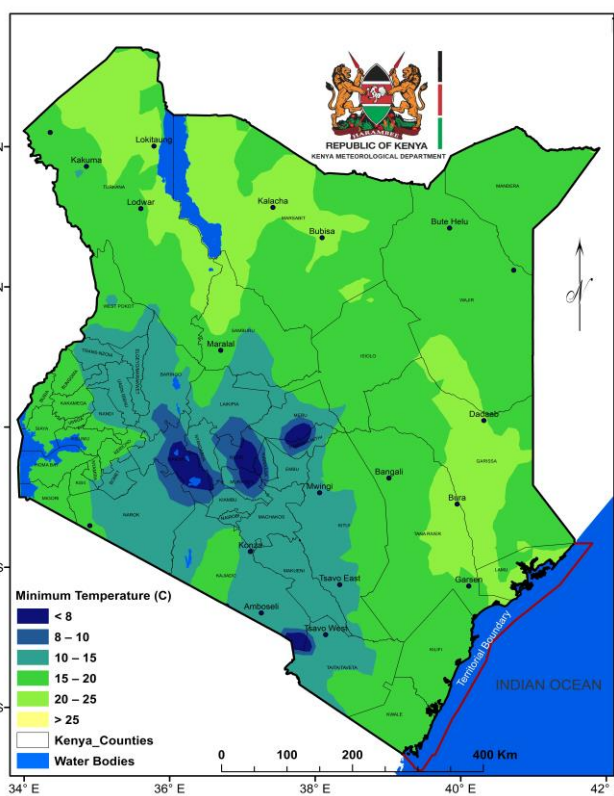


Figure 3: Forecasted Average Minimum Temperatures for 19th to 25th August 2025.

1.1 DETAILED REGIONAL RAINFALL FORECAST FOR 19TH TO 25TH AUGUST 2025

1.1.1 The Highlands West of the Rift Valley, the Lake Victoria Basin and the Rift Valley (*Nandi, Kakamega, Vihiga, Bungoma, Siaya, Busia, Baringo, Nakuru, Trans-Nzoia, Uasin-Gishu, Elgeyo-Marakwet, West-Pokot, Kisii, Nyamira, Kericho, Bomet, Kisumu, Homabay, Migori and Narok Counties*):

Morning rains are likely to occur over few places. Afternoon showers and thunderstorms are expected over several places during the first half of the forecast period, reducing to few places thereafter. Night showers are likely to occur over few places.

1.1.2 North-western Kenya (*Turkana and Samburu Counties*):

Morning rains as well as afternoon and night showers and thunderstorms are likely to occur over several places during the first half of the forecast period, reducing to few places thereafter.

1.1.3 The Highlands East of the Rift Valley (*Nyandarua, Laikipia, Nyeri, Kirinyaga, Murang'a, Kiambu, Meru, Embu, Tharaka-Nithi and Nairobi Counties*):

Mornings are expected to be cloudy, with occasional rains over few places, giving way to sunny intervals. Afternoon showers are likely to occur over several places during the first

half of the forecast period, reducing to few places thereafter. Nights are expected to be partly cloudy though showers may occur over few places.

1.1.4 North-eastern Kenya (*Marsabit, Mandera, Wajir, Garissa and Isiolo Counties*):

Sunny intervals are expected during the day while nights are likely to be partly cloudy.

However, morning rains as well as afternoon and night showers are likely to occur over a few areas in Marsabit County.

1.1.5 The South-eastern lowlands (*Machakos, Kitui, Makueni, Kajiado and Taita-Taveta Counties as well as the inland parts of Tana-River County*):

Occasional cloudiness is expected in the mornings giving way to sunny intervals for the rest of the day. Nights are likely to be partly cloudy.

However, morning rains as well as afternoon and night showers are likely to occur over few places during the first half of the forecast period.

1.1.6 The Coast (*Mombasa, Kilifi, Lamu and Kwale Counties as well as the coastal parts of Tana-River County*):

Sunny intervals are expected during the day while nights are likely to be partly cloudy.

However, there is a chance of morning, afternoon and night showers occurring over few places.

1.2 DETAILED TEMPERATURE FORECAST FOR 19TH TO 25TH AUGUST 2025

Expected maximum and minimum temperatures for selected towns and cities are shown in **Table 1**.

TABLE 1: FORECASTED MAXIMUM AND MINIMUM TEMPERATURES FOR SELECTED CITIES AND TOWNS								
CITY/TOWN	MAX (°C)	MIN (°C)	CITY/TOWN	MAX (°C)	MIN (°C)	CITY/TOWN	MAX (°C)	MIN (°C)
LODWAR	36.0	23.0	KISUMU	30.0	15.0	THIKA	28.0	10.0
MARSABIT	26.0	14.0	SUBA	28.0	18.0	MACHAKOS	26.0	09.0
MOYALE	29.0	17.0	NAKURU	26.0	11.0	MAKINDU	31.0	14.0
GARISSA	34.0	21.0	NAROK	24.0	08.0	KITUI	29.0	12.0
WAJIR	35.0	22.0	LAIKIPIA	27.0	10.0	VOI	32.0	17.0
MANDERA	38.0	23.0	NYAHURURU	22.0	07.0	LAMU	30.0	24.0
KITALE	26.0	11.0	KANGEMA	24.0	12.0	MALINDI	29.0	22.0
KAKAMEGA	28.0	13.0	NYERI	25.0	12.0	MSABAHA	29.0	21.0
ELDORET	24.0	10.0	EMBU	26.0	13.0	MTWAPA	29.0	20.0
KERICHO	25.0	09.0	MERU	25.0	12.0	MOMBASA	30.0	20.0
KISII	26.0	14.0	NAIROBI	26.0	10.0			

2 WEATHER REVIEW FOR 11TH TO 17TH AUGUST 2025

2.1 Rainfall Review

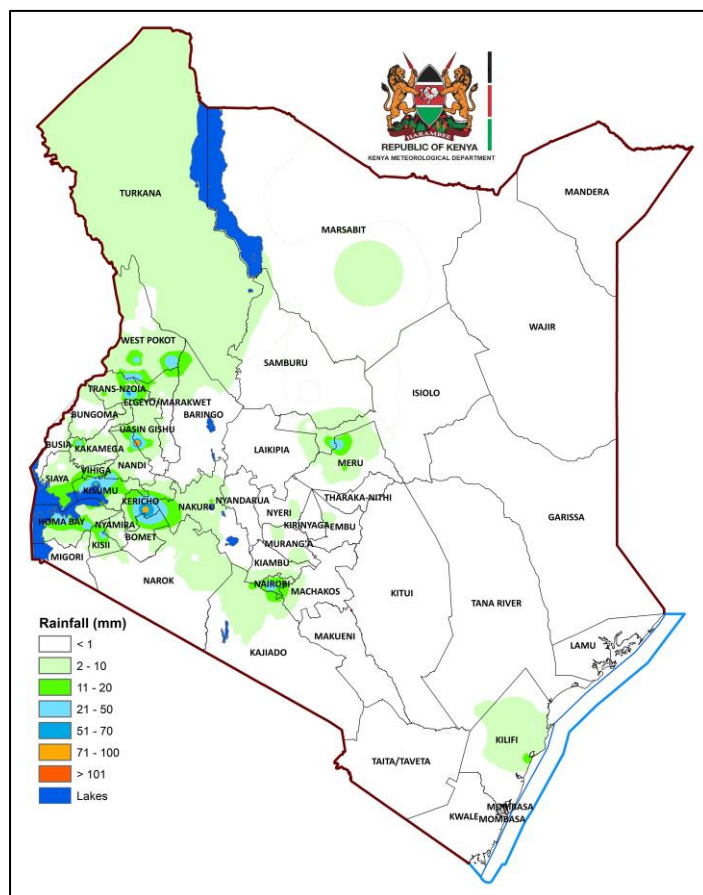


Figure 4: Observed Seven-Day Total Rainfall for 11th to 17th August 2025.

Rainfall was recorded in a few parts of the country, as shown in **Figures 4 and 5**.

Comparing the 4th to 10th August 2025 and the 11th to 17th August 2025 periods, it is noted that there was an increase in rainfall amounts over the Highlands East of the Rift Valley, North-eastern and North-western Kenya.

The highest seven-day rainfall total (116.5mm) was recorded in the meteorological station at Eldoret International Airport.

Butere Rainfall Station in Kakamega County recorded the highest amount of rainfall within 24-hours: 70.0mm on 15th August 2025.

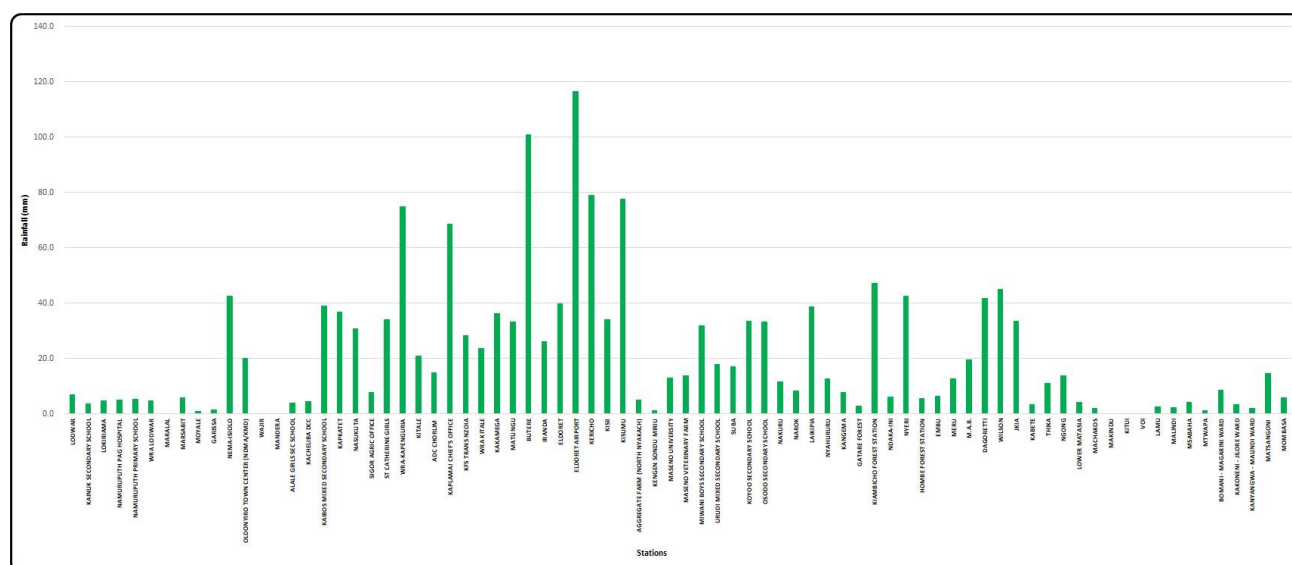


Figure 5: Observed Seven-Day Total Rainfall (per Station) for 11th to 17th August 2025.

2.2 Temperature Review

Comparing the 4th to 10th August 2025 and the 11th to 17th August 2025 periods, it is noted that day-time (maximum) temperatures increased over some stations including Moyale, Embu and Wajir and decreased over others like Nyahururu, Kakamega and Kisii. Night-time (minimum) temperatures increased over a number of stations such as Makindu, Kitui and Malindi and decreased over Kericho, Nyahururu and Kakamega among others.

Mandera Meteorological Station recorded the highest daily maximum temperature: 37.8°C on 13th August 2025 while Nyahururu Meteorological Station recorded the lowest daily minimum temperature: 6.6°C on the same day. The same stations recorded the highest seven-day average maximum temperature and the lowest seven-day average minimum temperature: 34.9°C and 7.5°C respectively (see **Figure 6**).

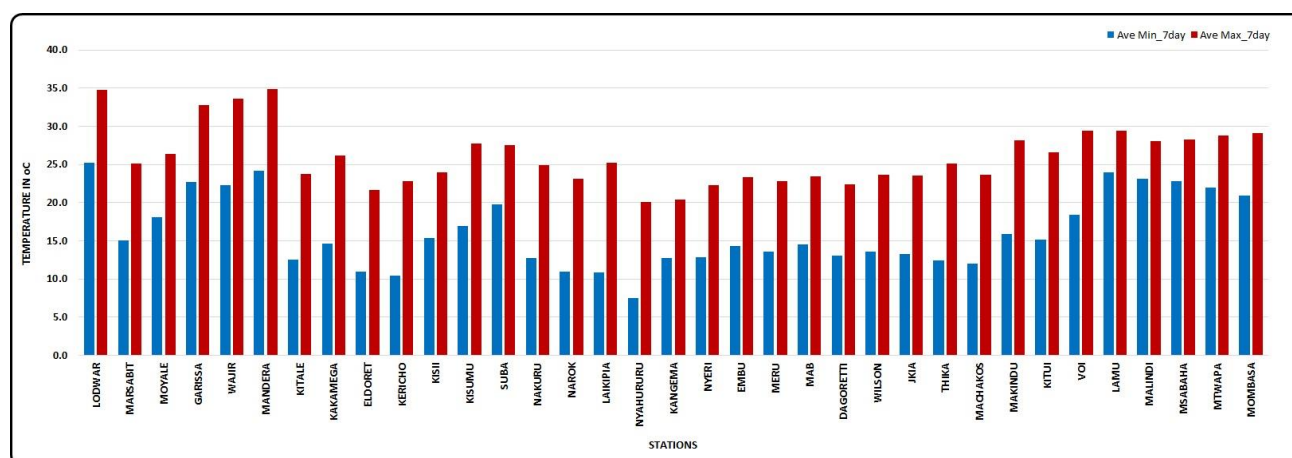


Figure 6: Seven-Day Average Maximum and Minimum Temperatures for 11th to 17th August 2025.

N.B: This forecast should be used in conjunction with the daily (24-hour) and five-day forecasts issued by this Department. County specific forecasts are available from the offices of respective County Directors of Meteorological Services.

Edward M. Muriuki
Ag. DIRECTOR,
KENYA METEOROLOGICAL DEPARTMENT

APPENDIX I: INTERPRETATION OF TERMS USED

Term	Rainfall Amount (24 hrs.)	Description
Light	< 5 mm	Gentle rain, drizzle.
Moderate	5–20 mm	Steady, noticeable rain.
Heavy	21–50 mm	Intense rain, possible thunder.
Very Heavy	> 50 mm	Prolonged rain.

Term	Area Affected	Description
Few places	< 33%	Rain in a small portion of the region.
Several places	33% to 66%	Rain in multiple but not most parts of the region.
Most places	> 66%	Rain in nearly all parts of the region.

Term	Area Affected	Description
Isolated	Less than 25%	Very few areas affected.
Scattered	25–50%	Several, but not most, areas affected.
Numerous	51–70%	Many areas affected.
Widespread	Over 70%	Almost all areas affected.

Term	Time Coverage (%)	Meaning
Occasional	Less than 25%	Happens rarely or a few times.
Intermittent	25% – 50%	Starts and stops, comes and goes.
Frequent	51% – 75%	Occurs regularly.
Very Frequent / Common	More than 75%	Happens almost all the time.

Term	Probability of Occurrence	Description
Possible	10–30%	There is low confidence.
Chance of/ May	31–50%	There is moderate confidence.
Likely	51–75%	The event is more probable than not.
Expected	76–90%	There is high confidence.
Very Likely	91–99%	There is very high confidence. Almost certain.
Certain	100%	The event is guaranteed to occur.