



REPUBLIC OF KENYA
MINISTRY OF ENVIRONMENT, CLIMATE CHANGE & FORESTRY
KENYA METEOROLOGICAL DEPARTMENT
COUNTY DIRECTOR OF METEOROLOGICAL SERVICES – MAKUENI COUNTY

For further info:
Contact: Simon M. Wambua
Mobile No. 0720978319

Email: kmdmakueni@gmail.com

County Director of Meteorological Services (CDMS)—Makueni County

Weekly weather forecast for Makueni County
Validity: 9th September 2025 – 15th September 2025

NB: The icon table, attached at the end of the forecast, contains the key and legend for the icons used.

PART I: WEEKLY FORECAST

Note:

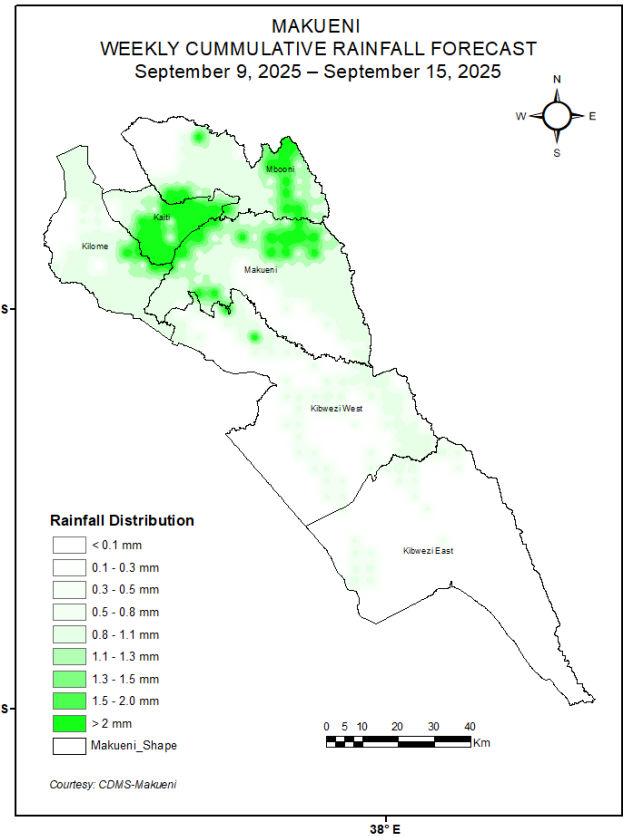
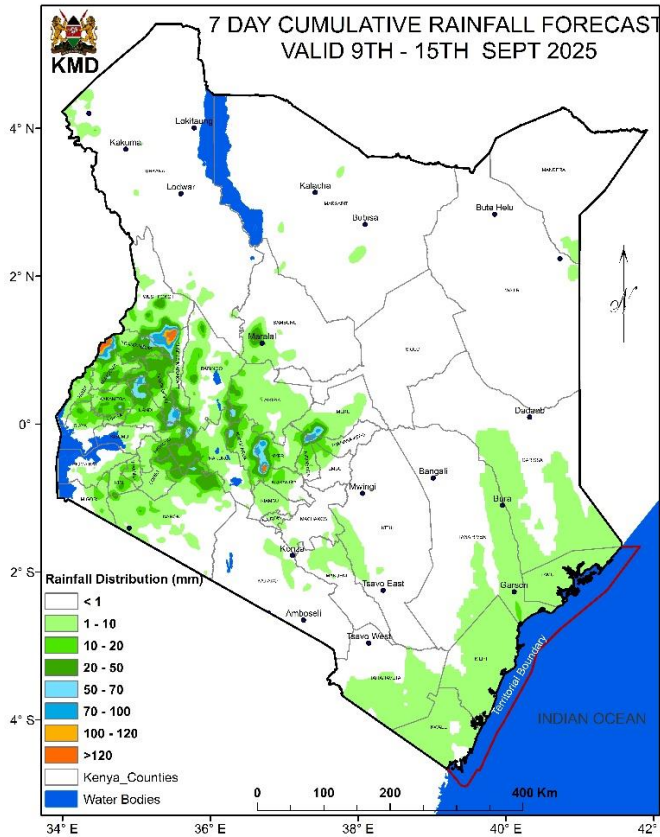
Dry day <1mm; Light rains (1-5 mm); Moderate rains (5-20 mm); Heavy rains > 20 mm, and the forecast format is as follows.

The Date	Night (00-06)	Morning (06-12)	Afternoon (12-18)	Evening (18-00)	Temp. Max/Temp. Low	Rainfall amount (mm)	Wind Speed (m/s)
Sunday xxxx					27° / 17°	0.2 mm	5 m/s

Additional Information: Rainfall Map

Kenya

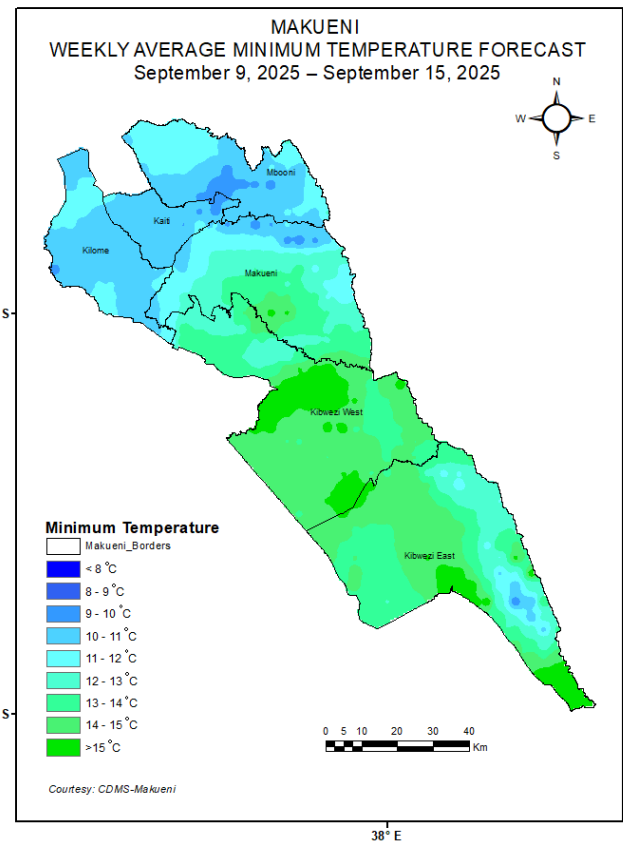
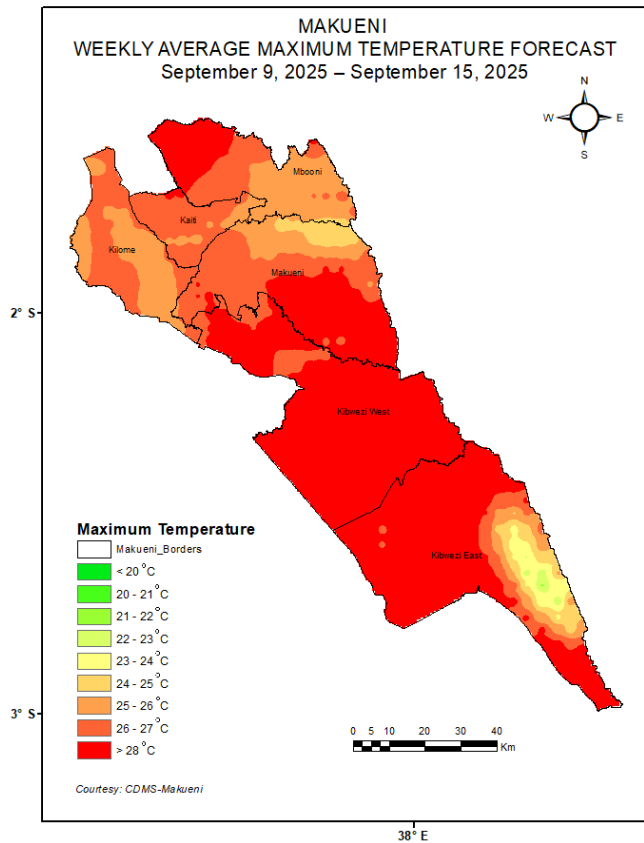
Makueni



Additional Information: Temperature Map

Maximum Temperature for the week

Minimum Temperature for the week



SUB COUNTY MAKUENI

Ward Kitise/Kithuki

The Date	(00-06)	(06-12)	(12-18)	(18-00)	Temp. Max/Min Degree Celsius	Rainfall amount (mm)	Wind Speed (m/s)
Tuesday 9 Sep.					30° / 18°	0.6 mm	6 m/s
Wednesday 10 Sep.					31° / 19°	0.7 mm	6 m/s
Thursday 11 Sep.					31° / 16°		7 m/s
Friday 12 Sep.					32° / 17°		5 m/s
Saturday 13 Sep.					32° / 17°		6 m/s
Sunday 14 Sep.					31° / 17°		6 m/s
Monday 15 Sep.					32° / 17°		5 m/s

Ward Mavindini

The Date	(00-06)	(06-12)	(12-18)	(18-00)	Temp. Max/Min Degree Celsius	Rainfall amount (mm)	Wind Speed (m/s)
Tuesday 9 Sep.					29° / 18°	1.1 mm	6 m/s
Wednesday 10 Sep.					30° / 19°	1.4 mm	6 m/s
Thursday 11 Sep.					30° / 15°		5 m/s
Friday 12 Sep.					30° / 17°		4 m/s
Saturday 13 Sep.					31° / 16°		5 m/s
Sunday 14 Sep.					31° / 16°		5 m/s
Monday 15 Sep.					31° / 16°		5 m/s

Ward Wote

The Date	(00-06)	(06-12)	(12-18)	(18-00)	Temp. Max/Min Degree Celsius	Rainfall amount (mm)	Wind Speed (m/s)
Tuesday 9 Sep.					28° / 17°	2.3 mm	5 m/s
Wednesday 10 Sep.					29° / 18°	1 mm	5 m/s
Thursday 11 Sep.					29° / 14°	0.1 mm	5 m/s
Friday 12 Sep.					29° / 15°		4 m/s
Saturday 13 Sep.					30° / 14°		4 m/s
Sunday 14 Sep.					30° / 14°		3 m/s
Monday 15 Sep.					31° / 14°		4 m/s

Ward Kathonzweni

The Date	(00-06)	(06-12)	(12-18)	(18-00)	Temp. Max/Min Degree Celsius	Rainfall amount (mm)	Wind Speed (m/s)
Tuesday 9 Sep.					29° / 18°	1.2 mm	6 m/s
Wednesday 10 Sep.					30° / 18°	1.2 mm	6 m/s
Thursday 11 Sep.					29° / 15°		5 m/s
Friday 12 Sep.					30° / 16°		4 m/s
Saturday 13 Sep.					30° / 15°		5 m/s
Sunday 14 Sep.					31° / 15°		5 m/s
Monday 15 Sep.					31° / 15°		5 m/s

Ward Muvau/Kikumini

The Date	(00-06)	(06-12)	(12-18)	(18-00)	Temp. Max/Min Degree Celsius	Rainfall amount (mm)	Wind Speed (m/s)
Tuesday 9 Sep.					29° / 18°	1 mm	5 m/s
Wednesday 10 Sep.					30° / 19°	1.1 mm	5 m/s
Thursday 11 Sep.					29° / 15°		5 m/s
Friday 12 Sep.					30° / 16°		4 m/s
Saturday 13 Sep.					30° / 15°		5 m/s
Sunday 14 Sep.					30° / 15°		4 m/s
Monday 15 Sep.					31° / 15°		4 m/s

Ward Mbitini

The Date	(00-06)	(06-12)	(12-18)	(18-00)	Temp. Max/Min Degree Celsius	Rainfall amount (mm)	Wind Speed (m/s)
Tuesday 9 Sep.					27° / 17°	1.6 mm	5 m/s
Wednesday 10 Sep.					30° / 17°	1.3 mm	6 m/s
Thursday 11 Sep.					28° / 15°		5 m/s
Friday 12 Sep.					29° / 15°		4 m/s
Saturday 13 Sep.					30° / 14°		5 m/s
Sunday 14 Sep.					30° / 14°		4 m/s
Monday 15 Sep.					31° / 15°		4 m/s



Ward Nzakika

The Date	(00-06)	(06-12)	(12-18)	(18-00)	Temp. Max/Min Degree Celsius	Rainfall amount (mm)	Wind Speed (m/s)
Tuesday 9 Sep.					28° / 18°	2 mm	5 m/s
Wednesday 10 Sep.					30° / 18°	0.9 mm	6 m/s
Thursday 11 Sep.					29° / 15°		5 m/s
Friday 12 Sep.					29° / 15°		4 m/s
Saturday 13 Sep.					31° / 14°		5 m/s
Sunday 14 Sep.					31° / 15°		4 m/s
Monday 15 Sep.					31° / 15°		5 m/s

SUB COUNTY KIBWEZI EAST

Ward Masongaleni

The Date	(00-06)	(06-12)	(12-18)	(18-00)	Temp. Max/Min Degree Celsius	Rainfall amount (mm)	Wind Speed (m/s)
Tuesday 9 Sep.					29° / 18°	0.9 mm	7 m/s
Wednesday 10 Sep.					31° / 19°	1 mm	9 m/s
Thursday 11 Sep.					31° / 16°		7 m/s
Friday 12 Sep.					32° / 16°		7 m/s
Saturday 13 Sep.					32° / 16°		6 m/s
Sunday 14 Sep.					31° / 16°		6 m/s
Monday 15 Sep.					31° / 17°		6 m/s

Ward Ivinza

The Date	(00-06)	(06-12)	(12-18)	(18-00)	Temp. Max/Min Degree Celsius	Rainfall amount (mm)	Wind Speed (m/s)
Tuesday 9 Sep.					29° / 18°	1.2 mm	7 m/s
Wednesday 10 Sep.					31° / 19°	0.4 mm	9 m/s
Thursday 11 Sep.					31° / 16°		6 m/s
Friday 12 Sep.					31° / 16°		6 m/s
Saturday 13 Sep.					32° / 17°		6 m/s
Sunday 14 Sep.					32° / 16°		5 m/s
Monday 15 Sep.					32° / 16°		6 m/s

Ward Mtito Andei

The Date	(00-06)	(06-12)	(12-18)	(18-00)	Temp. Max/Min Degree Celsius	Rainfall amount (mm)	Wind Speed (m/s)
Tuesday 9 Sep.					31° / 20°	0.7 mm	8 m/s
Wednesday 10 Sep.					33° / 20°	0.5 mm	10 m/s
Thursday 11 Sep.					32° / 18°		8 m/s
Friday 12 Sep.					33° / 19°		8 m/s
Saturday 13 Sep.					33° / 18°		8 m/s
Sunday 14 Sep.					33° / 17°		7 m/s
Monday 15 Sep.					33° / 18°		7 m/s

Ward Thange

The Date	(00-06)	(06-12)	(12-18)	(18-00)	Temp. Max/Min Degree Celsius	Rainfall amount (mm)	Wind Speed (m/s)
Tuesday 9 Sep.					29° / 18°	0.9 mm	7 m/s
Wednesday 10 Sep.					31° / 19°	1 mm	9 m/s
Thursday 11 Sep.					31° / 16°		7 m/s
Friday 12 Sep.					32° / 16°		7 m/s
Saturday 13 Sep.					32° / 16°		6 m/s
Sunday 14 Sep.					31° / 16°		6 m/s
Monday 15 Sep.					31° / 17°		6 m/s



SUB COUNTY KIBWEZI WEST

Ward Makindu

The Date	(00-06)	(06-12)	(12-18)	(18-00)	Temp. Max/Min Degree Celsius	Rainfall amount (mm)	Wind Speed (m/s)
Tuesday 9 Sep.					29° / 17°	0.9 mm	7 m/s
Wednesday 10 Sep.					31° / 18°	1.4 mm	7 m/s
Thursday 11 Sep.					30° / 15°		8 m/s
Friday 12 Sep.					32° / 16°		6 m/s
Saturday 13 Sep.					31° / 15°		7 m/s
Sunday 14 Sep.					31° / 15°		8 m/s
Monday 15 Sep.					32° / 16°		6 m/s

Ward Nguu/Masumba

The Date	(00-06)	(06-12)	(12-18)	(18-00)	Temp. Max/Min Degree Celsius	Rainfall amount (mm)	Wind Speed (m/s)
Tuesday 9 Sep.					28° / 18°	1.2 mm	5 m/s
Wednesday 10 Sep.					31° / 18°	1 mm	6 m/s
Thursday 11 Sep.					29° / 15°		5 m/s
Friday 12 Sep.					29° / 16°		4 m/s
Saturday 13 Sep.					31° / 15°		5 m/s
Sunday 14 Sep.					31° / 15°		5 m/s
Monday 15 Sep.					32° / 15°		5 m/s

Ward Kikumbulyu North

The Date	(00-06)	(06-12)	(12-18)	(18-00)	Temp. Max/Min Degree Celsius	Rainfall amount (mm)	Wind Speed (m/s)
Tuesday 9 Sep.					30° / 18°	0.5 mm	7 m/s
Wednesday 10 Sep.					31° / 19°	0.3 mm	8 m/s
Thursday 11 Sep.					31° / 16°		6 m/s
Friday 12 Sep.					32° / 17°		6 m/s
Saturday 13 Sep.					32° / 16°		7 m/s
Sunday 14 Sep.					32° / 17°		6 m/s
Monday 15 Sep.					32° / 18°		6 m/s

Ward Emali/Mulala

The Date	(00-06)	(06-12)	(12-18)	(18-00)	Temp. Max/Min Degree Celsius	Rainfall amount (mm)	Wind Speed (m/s)
Tuesday 9 Sep.					28° / 17°	2.6 mm	5 m/s
Wednesday 10 Sep.					30° / 18°	0.6 mm	6 m/s
Thursday 11 Sep.					30° / 16°		6 m/s
Friday 12 Sep.					30° / 16°		5 m/s
Saturday 13 Sep.					31° / 16°		6 m/s
Sunday 14 Sep.					31° / 15°		5 m/s
Monday 15 Sep.					32° / 16°		5 m/s

Ward Nguumo

The Date	(00-06)	(06-12)	(12-18)	(18-00)	Temp. Max/Min Degree Celsius	Rainfall amount (mm)	Wind Speed (m/s)
Tuesday 9 Sep.					29° / 18°	1 mm	7 m/s
Wednesday 10 Sep.					31° / 18°	1 mm	8 m/s
Thursday 11 Sep.					30° / 15°		7 m/s
Friday 12 Sep.					32° / 16°		7 m/s
Saturday 13 Sep.					31° / 16°		7 m/s
Sunday 14 Sep.					31° / 15°		6 m/s
Monday 15 Sep.					31° / 16°		7 m/s

Ward Kikumbulyu South

The Date	(00-06)	(06-12)	(12-18)	(18-00)	Temp. Max/Min Degree Celsius	Rainfall amount (mm)	Wind Speed (m/s)
Tuesday 9 Sep.					29° / 18°	1 mm	7 m/s
Wednesday 10 Sep.					31° / 18°	1 mm	8 m/s
Thursday 11 Sep.					30° / 15°		7 m/s
Friday 12 Sep.					32° / 16°		7 m/s
Saturday 13 Sep.					31° / 16°		7 m/s
Sunday 14 Sep.					31° / 15°		6 m/s
Monday 15 Sep.					31° / 16°		7 m/s



SUB COUNTY KILOME

Ward Kasikeu

The Date	(00-06)	(06-12)	(12-18)	(18-00)	Temp. Max/Min Degree Celsius	Rainfall amount (mm)	Wind Speed (m/s)
Tuesday 9 Sep.					26° / 17°	2.8 mm	5 m/s
Wednesday 10 Sep.					28° / 17°	1.1 mm	6 m/s
Thursday 11 Sep.					27° / 15°		5 m/s
Friday 12 Sep.					28° / 15°	0.1 mm	5 m/s
Saturday 13 Sep.					29° / 14°		4 m/s
Sunday 14 Sep.					30° / 14°		4 m/s
Monday 15 Sep.					30° / 15°		5 m/s

Ward Kiima Kiu

The Date	(00-06)	(06-12)	(12-18)	(18-00)	Temp. Max/Min Degree Celsius	Rainfall amount (mm)	Wind Speed (m/s)
Tuesday 9 Sep.					27° / 16°	1 mm	6 m/s
Wednesday 10 Sep.					29° / 17°	0.1 mm	7 m/s
Thursday 11 Sep.					29° / 14°		7 m/s
Friday 12 Sep.					30° / 14°		6 m/s
Saturday 13 Sep.					30° / 14°		7 m/s
Sunday 14 Sep.					30° / 14°		7 m/s
Monday 15 Sep.					31° / 14°		7 m/s

Ward Mukaa

The Date	(00-06)	(06-12)	(12-18)	(18-00)	Temp. Max/Min Degree Celsius	Rainfall amount (mm)	Wind Speed (m/s)
Tuesday 9 Sep.					23° / 15°	2.5 mm	5 m/s
Wednesday 10 Sep.					25° / 15°	0.3 mm	6 m/s
Thursday 11 Sep.					24° / 13°		5 m/s
Friday 12 Sep.					25° / 12°	0.1 mm	5 m/s
Saturday 13 Sep.					26° / 11°		4 m/s
Sunday 14 Sep.					27° / 12°		5 m/s
Monday 15 Sep.					27° / 12°		5 m/s

SUB COUNTY MBOONI

Ward Tulimani

The Date	(00-06)	(06-12)	(12-18)	(18-00)	Temp. Max/Min Degree Celsius	Rainfall amount (mm)	Wind Speed (m/s)
Tuesday 9 Sep.					26° / 17°	2.8 mm	5 m/s
Wednesday 10 Sep.					27° / 17°	0.9 mm	5 m/s
Thursday 11 Sep.					27° / 15°		4 m/s
Friday 12 Sep.					28° / 14°		3 m/s
Saturday 13 Sep.					29° / 13°	0.2 mm	3 m/s
Sunday 14 Sep.					29° / 14°	0.1 mm	3 m/s
Monday 15 Sep.					29° / 14°		4 m/s

Ward Kiteta/Kisau

The Date	(00-06)	(06-12)	(12-18)	(18-00)	Temp. Max/Min Degree Celsius	Rainfall amount (mm)	Wind Speed (m/s)
Tuesday 9 Sep.					27° / 17°	1.5 mm	5 m/s
Wednesday 10 Sep.					28° / 18°	1.2 mm	5 m/s
Thursday 11 Sep.					28° / 14°		5 m/s
Friday 12 Sep.					28° / 15°		4 m/s
Saturday 13 Sep.					29° / 14°		4 m/s
Sunday 14 Sep.					29° / 14°		4 m/s
Monday 15 Sep.					30° / 14°		5 m/s



Ward
Kithungo/Kitundu

The Date	(00-06)	(06-12)	(12-18)	(18-00)	Temp. Max/Min Degree Celsius	Rainfall amount (mm)	Wind Speed (m/s)
Tuesday 9 Sep.					25° / 16°	3.1 mm	5 m/s
Wednesday 10 Sep.					26° / 16°	1.5 mm	5 m/s
Thursday 11 Sep.					26° / 13°	0.1 mm	4 m/s
Friday 12 Sep.					26° / 14°		4 m/s
Saturday 13 Sep.					27° / 12°		3 m/s
Sunday 14 Sep.					27° / 13°		3 m/s
Monday 15 Sep.					28° / 13°		4 m/s

Ward
Kalawa

The Date	(00-06)	(06-12)	(12-18)	(18-00)	Temp. Max/Min Degree Celsius	Rainfall amount (mm)	Wind Speed (m/s)
Tuesday 9 Sep.					31° / 20°	0.7 mm	8 m/s
Wednesday 10 Sep.					33° / 20°	0.5 mm	10 m/s
Thursday 11 Sep.					32° / 18°		8 m/s
Friday 12 Sep.					33° / 19°		8 m/s
Saturday 13 Sep.					33° / 18°		8 m/s
Sunday 14 Sep.					33° / 17°		7 m/s
Monday 15 Sep.					33° / 18°		7 m/s

Ward
Mbooni

The Date	(00-06)	(06-12)	(12-18)	(18-00)	Temp. Max/Min Degree Celsius	Rainfall amount (mm)	Wind Speed (m/s)
Tuesday 9 Sep.					23° / 14°	3.1 mm	5 m/s
Wednesday 10 Sep.					24° / 14°	1.5 mm	5 m/s
Thursday 11 Sep.					24° / 11°	0.1 mm	4 m/s
Friday 12 Sep.					24° / 11°		4 m/s
Saturday 13 Sep.					25° / 10°		3 m/s
Sunday 14 Sep.					25° / 10°		3 m/s
Monday 15 Sep.					26° / 11°		4 m/s

Ward
Kako/Waia

The Date	(00-06)	(06-12)	(12-18)	(18-00)	Temp. Max/Min Degree Celsius	Rainfall amount (mm)	Wind Speed (m/s)
Tuesday 9 Sep.					27° / 17°	1.5 mm	5 m/s
Wednesday 10 Sep.					28° / 18°	1.2 mm	5 m/s
Thursday 11 Sep.					28° / 14°		5 m/s
Friday 12 Sep.					28° / 15°		4 m/s
Saturday 13 Sep.					29° / 14°		4 m/s
Sunday 14 Sep.					29° / 14°		4 m/s
Monday 15 Sep.					30° / 14°		5 m/s

SUB COUNTY
KAITI

Ward
Kilungu

The Date	(00-06)	(06-12)	(12-18)	(18-00)	Temp. Max/Min Degree Celsius	Rainfall amount (mm)	Wind Speed (m/s)
Tuesday 9 Sep.					21° / 12°	4.1 mm	4 m/s
Wednesday 10 Sep.					23° / 12°	1 mm	5 m/s
Thursday 11 Sep.					22° / 10°		5 m/s
Friday 12 Sep.					23° / 10°	0.1 mm	4 m/s
Saturday 13 Sep.					24° / 9°		4 m/s
Sunday 14 Sep.					24° / 9°		4 m/s
Monday 15 Sep.					25° / 10°		5 m/s

Ward
Ukia

The Date	(00-06)	(06-12)	(12-18)	(18-00)	Temp. Max/Min Degree Celsius	Rainfall amount (mm)	Wind Speed (m/s)
Tuesday 9 Sep.					26° / 16°	3.1 mm	5 m/s
Wednesday 10 Sep.					27° / 17°	1.5 mm	5 m/s
Thursday 11 Sep.					26° / 14°	0.1 mm	4 m/s
Friday 12 Sep.					26° / 14°		4 m/s
Saturday 13 Sep.					28° / 13°		3 m/s
Sunday 14 Sep.					28° / 13°		3 m/s
Monday 15 Sep.					29° / 14°		4 m/s



Ward Ilima

The Date	(00-06)	(06-12)	(12-18)	(18-00)	Temp. Max/Min Degree Celsius	Rainfall amount (mm)	Wind Speed (m/s)
Tuesday 9 Sep.					24° / 16°	4.1 mm	4 m/s
Wednesday 10 Sep.					26° / 16°	1 mm	5 m/s
Thursday 11 Sep.					26° / 14°		5 m/s
Friday 12 Sep.					26° / 13°	0.1 mm	4 m/s
Saturday 13 Sep.					27° / 12°		4 m/s
Sunday 14 Sep.					28° / 13°		4 m/s
Monday 15 Sep.					28° / 13°		5 m/s

Ward Kee

The Date	(00-06)	(06-12)	(12-18)	(18-00)	Temp. Max/Min Degree Celsius	Rainfall amount (mm)	Wind Speed (m/s)
Tuesday 9 Sep.					24° / 15°	1.9 mm	5 m/s
Wednesday 10 Sep.					25° / 15°	0.4 mm	6 m/s
Thursday 11 Sep.					24° / 13°		4 m/s
Friday 12 Sep.					25° / 12°		4 m/s
Saturday 13 Sep.					26° / 11°	0.1 mm	4 m/s
Sunday 14 Sep.					27° / 12°	0.1 mm	3 m/s
Monday 15 Sep.					27° / 12°	0.2 mm	4 m/s

PART II: FURTHER ADVISORIES.

- Community members are advised to inculcate the culture of being “weather-ready”, “climate-smart”, and “water-wise”. This is to navigate the unfamiliar and chaotic environment of a varying and changing climate. This will help them adapt to a changing climate while mitigating the adverse effects of climate change.
- Farmers are advised to consult the nearest Ward Agricultural Officer (WAO) and the Ward Livestock Production Officer (WLPO) to obtain any further agro-weather, agronomy, and livestock production advisories they may require from time to time as the rainy season ceases and we enter the dry season with occasional Dry days.

Weather symbols Key:

Description	Symbol day	Symbol night	Description	Symbol day	Description	Symbol day	Symbol night
Clear sky			Light rain		Light rain and thunder		
Fair			Rain		Rain and thunder		
Partly cloudy			Heavy Rain		Heavy rain and thunder		
Intermittent light rain			Fog		Intermittent light rain and thunder		
Intermittent Rain			Cloudy		Intermittent rain and thunder		
Intermittent heavy rain					Intermittent heavy rain and thunder		

“Intermittent - starting and stopping at irregular intervals”

NB: This forecast should be used with the 24-hour, 5-day, 7-day, and monthly outlooks, special forecasts, alerts, and regular updates/advisories issued by this department.