



REPUBLIC OF KENYA

MINISTRY OF ENVIRONMENT, CLIMATE CHANGE AND FORESTRY KENYA METEOROLOGICAL DEPARTMENT – KISUMU COUNTY

Kisumu Prosperity House (Former Provincial Headquarters) First Floor, Wing C,
P. O. Box 336-40100 Kisumu, Tel: 0754621990, 0773-609702
E-mail: kisumumetstation@gmail.com, cdmkisumu@meteo.go.ke

Date: 10th September 2025

SEASONAL FORECAST FOR OCTOBER, NOVEMBER, DECEMBER 2025 “SHORT-RAINS” SEASON

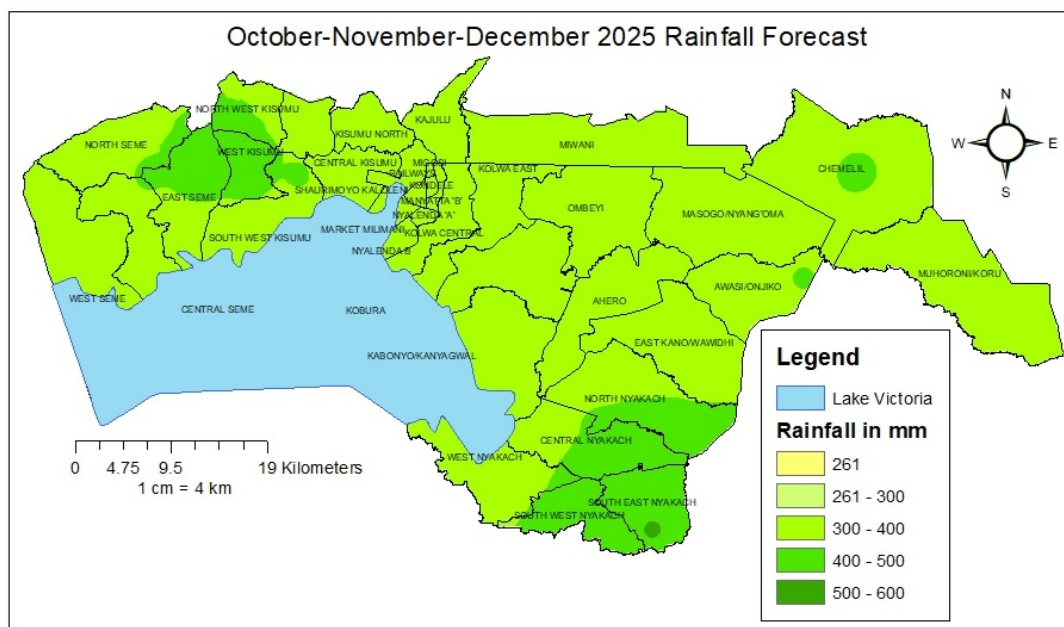


Figure 1: Forecast volume of rainfall in mm in Kisumu County during the October, November, December 2025 rainy season.

SUMMARY OF SEASONAL WEATHER OUTLOOK

The developing negative Indian Ocean Dipole (IOD) over the equatorial Indian Ocean and its persistence during the months of September to November 2025, and likely return to neutral IOD during December 2025 was considered. The prevailing El Niño-Southern Oscillation (ENSO) neutral conditions over the equatorial Pacific Ocean and its likely persistence for the next several months until January 2026, or expected development of a weak La Nina condition was also considered.

The outlook for October-November-December (OND) 2025 “Short-Rains” season indicates that near-average to below-average (depressed) rainfall will occur over

Kisumu County. Kisumu County will continue receiving rainfall from the month of September 2025, with rainfall likely to cease during the third to fourth week of December 2025. Rainfall will be near-average to above-average (enhanced) with fair to good distribution both in time and space during the onset month of October 2025, while during the peak month of November 2025 and cessation month of December 2025 rainfall will be near-average to below-average (depressed) with fair to poor distribution both in time and space. Isolated incidences of heavy rainstorms are likely to occur which may cause flash floods especially during the months of October and November 2025. The temperature outlook for OND 2025 season indicates a high likelihood of near-average to warmer than average OND temperatures over much of the County. During the month of October 2025, near-average temperatures are expected with warmer than average temperatures during November and December 2025.

NB: *There are intra-seasonal drivers of climate variability, such as tropical cyclones and the Madden-Julian Oscillation (an eastward moving tropical weather system that affects rainfall), that are only predictable at shorter lead times. It is therefore imperative to keep up to date with subsequent forecasts and updates.*

The map above (**Figure 1**) shows the volume of rainfall in mm that is forecast to fall in each part of Kisumu County during the coming October to December 2025 rainy season.

The map below (**Figure 2**) shows normal rainfall in mm in each part of the county during the same October to December period.

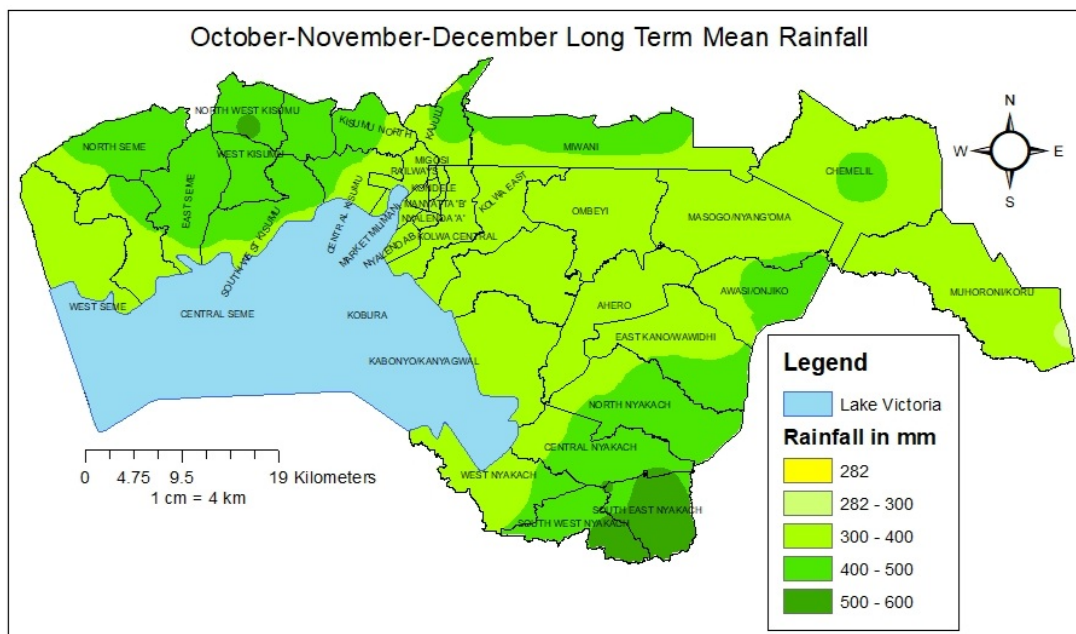


Figure 2: Normal rainfall in mm in Kisumu County during the October, November, December rainy season. This map shows the average rainfall experienced during the same three-month period over 30 years between 1991 and 2020

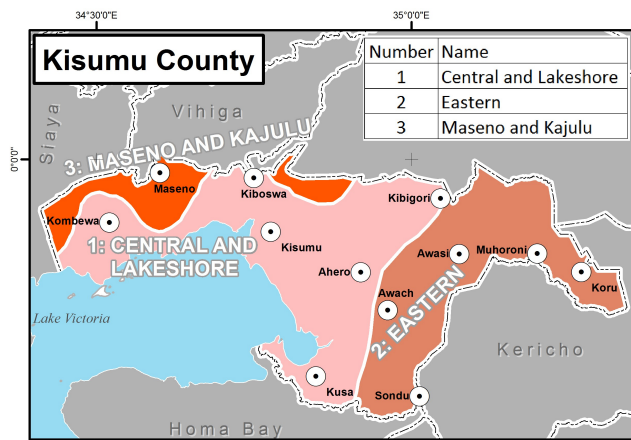


Figure 3: The climatic zones over Kisumu County

Seasonal Forecast for Kisumu County by climatic zone

Forecast for Central/Lakeshore, Eastern and Maseno/Kajulu climatic zones 1, 2 and 3 (includes Kisumu, Kombewa, Ahero, Kiboswa, Kibigori, Muhoroni, Chemelil, Awasi, Sondu, Koru, Maseno, Kajulu, etc)

Start of rainy season (onset): Continues from September 2025

End of rainy season (cessation): Third to fourth week of December 2025

Probable volume of rainfall: 260 – 500 mm – Close to or lower than the average rainfall received in this season over the past 30 years (depressed rainfall).

Distribution of rainfall over time: Rainfall will be near-average to above-average (enhanced) with fair to good distribution both in time and space during the onset month of October 2025, while during the peak month of November 2025, and cessation month of December 2025, rainfall will be near-average to below-average (depressed) with fair to poor distribution both in time and space. Isolated incidents of heavy rainstorms will also occur especially during October and November 2025 which may cause flash floods.

Temperature Outlook: Kisumu County will likely experience near to warmer than average temperatures during OND 2025 rainfall season. However, near-average temperatures are expected in the month of October, while warmer than average temperatures will prevail during the months of November and December 2025.

Commentary of County Director of Meteorological Services:

- There will likely be short dry spells of less than 5 days over the County during the month of October 2025, while during November and December 2025 long dry spells of more than 5 days will likely occur
- Regions in Central Nyakach, Southeast and Southwest Nyakach, Northwest Kisumu, West Kisumu, East Seme and Chemelil Wards are likely to receive more than 400 mm of rainfall.

Advice to farmers from County Department of Agriculture:

- Consult your local agricultural extension officer for advice on how to plan farming activities in the light of this forecast

Please use this seasonal forecast in conjunction with the weekly and monthly weather forecasts for Kisumu County, issued by the County Director of Meteorological Services.

For further information, please contact:

County Director of Meteorology – Paul Oloo

Mobile : 0721 624 918

Email: paul_oloo@yahoo.com, pauloloo16@gmail.com.

More information about the climate and weather in Kenya is on the KMD website <http://www.meteo.go.ke/>