



KENYA  
METEOROLOGICAL  
DEPARTMENT

*For further info:*

*Contact: Daniel M. Mbithi*

*Mobile No. 0715255171*

*Email: mbithi\_d@yahoo.com*

County Director of Meteorological Services Kitui County

## Weekly Weather forecast for Kitui County

### 1.1 PART I: WEEKLY FORECAST FOR THE PERIOD 16<sup>th</sup> to 22<sup>nd</sup> September 2025 Weather forecast Table

Sub County	Ward	Probable Total weekly amount (mm)	Probable weather Notes: Light rains <1-5 mm; Moderate rains 5-20 mm; Heavy rains 20-50 mm; Very heavy rains >50 mm							Winds (km/h kilometers per hour)	Temp (Tmax °C & Tmin °C)
			Tue	Wed	Thur	Fri	Sat	Sun	Mon	Weekly	Weekly
Mwingi West	Nguutani	0.0 mm	Sunny & Dry	Sunny & Dry	Sunny & Dry	Sunny & Dry	Sunny & Dry	Sunny & Dry	Sunny & Dry	Easterly 25.2 km/h	Max 27-32 °C Min 15-19 °C
	Kyome/Thaana	0.0 mm	Sunny & Dry	Sunny & Dry	Sunny & Dry	Sunny & Dry	Sunny & Dry	Sunny & Dry	Sunny & Dry		
	Kiomo/Kyethani	0.0 mm	Sunny & Dry	Sunny & Dry	Sunny & Dry	Sunny & Dry	Sunny & Dry	Sunny & Dry	Sunny & Dry		
	Migwani	0.0 mm	Sunny & Dry	Sunny & Dry	Sunny & Dry	Sunny & Dry	Sunny & Dry	Sunny & Dry	Sunny & Dry		
Mwingi North	Ngomeni	0.0 mm	Sunny & Dry	Sunny & Dry	Sunny & Dry	Sunny & Dry	Sunny & Dry	Sunny & Dry	Sunny & Dry	Easterly 28.8 km/h	Max 30-36 °C Min 18-22 °C
	Kyuso	0.0 mm	Sunny & Dry	Sunny & Dry	Sunny & Dry	Sunny & Dry	Sunny & Dry	Sunny & Dry	Sunny & Dry		
	Tseikuru	0.0 mm	Sunny & Dry	Sunny & Dry	Sunny & Dry	Sunny & Dry	Sunny & Dry	Sunny & Dry	Sunny & Dry		
	Tharaka	0.0 mm	Sunny & Dry	Sunny & Dry	Sunny & Dry	Sunny & Dry	Sunny & Dry	Sunny & Dry	Sunny & Dry		
	Mumoni	0.0 mm	Sunny & Dry	Sunny & Dry	Sunny & Dry	Sunny & Dry	Sunny & Dry	Sunny & Dry	Sunny & Dry		
Mwingi Central	Central	0.0 mm	Sunny & Dry	Sunny & Dry	Sunny & Dry	Sunny & Dry	Sunny & Dry	Sunny & Dry	Sunny & Dry		
	Kivou	0.0 mm	Sunny & Dry	Sunny & Dry	Sunny & Dry	Sunny & Dry	Sunny & Dry	Sunny & Dry	Sunny & Dry		

[illegible]

Sub County	Ward	Probable Total weekly amount (mm)	Probable weather Notes: Light rains <1-5 mm; Moderate rains 5-20 mm; Heavy rains 20-50 mm; Very heavy rains >50 mm							Winds (km/h kilometers per hour)	Temp (Tmax °C & Tmin °C)
			Tue	Wed	Thur	Fri	Sat	Sun	Mon	Weekly	Weekly
Kitui Central	Kyangwithya West	0.0 mm	Sunny & Dry	Sunny & Dry	Sunny & Dry	Sunny & Dry	Sunny & Dry	Sunny & Dry	Sunny & Dry	Easterly 21.6 km/h	Max 26-32 °C Min 14-20 °C
	Township	0.0 mm	Sunny & Dry	Sunny & Dry	Sunny & Dry	Sunny & Dry	Sunny & Dry	Sunny & Dry	Sunny & Dry		
	Mulango	0.0 mm	Sunny & Dry	Sunny & Dry	Sunny & Dry	Sunny & Dry	Sunny & Dry	Sunny & Dry	Sunny & Dry		
	Miambani	0.0 mm	Sunny & Dry	Sunny & Dry	Sunny & Dry	Sunny & Dry	Sunny & Dry	Sunny & Dry	Sunny & Dry		

## 1.2 Review for August 2025

August 2025 marked the end of cold season across Kitui county. Occasional cool and cloudy conditions coupled with dry weather prevailed over most parts of the county though, isolated areas received a day or two of light rainfall. The rest of the county recorded no rainfall at all throughout the month. Strong southerly to south-easterly winds with speeds exceeding 25 knots (12.86 m/s) were experienced occasionally over the county during the month.

## 1.3 Outlook for September 2025

The rainfall forecast for September 2025 is based on the observed patterns of the Global Sea Surface Temperatures (SSTs) especially over the Indian and Pacific Oceans. Most parts of the county are likely to experience generally sunny and dry conditions during the month of September.

## 1.4 PART II: FURTHER ADVISORIES

### **SUMMARY ABOUT THE WEEKLY FORECAST:**

Most areas in the county are likely to experience generally sunny and dry weather conditions throughout forecast period. However, there is a small chance ( $\leq 33\%$ ) of light rain over high ground areas during the forecast period. Maximum temperatures are expected to range from 24°C - 36°C, while minimum temperatures are expected to range from 13°C - 22°C. Strong southerly to south-easterly winds with speeds exceeding 25 knots (12.86 m/s) are expected to persist in most parts of the County. *Community members advised to inculcate the culture of being “weather – ready”, “climate – smart” and “water – wise” as we navigate the unfamiliar and chaotic environment of a changing climate. This will help them adapt to a changing climate while at the same time mitigating the adverse effects of Climate Change and Variability, hence becoming more resilient to the vagaries of Climate Change.* In light of this weather forecast, farmers are also advised to consult with respective local extension officers from the County Ministry of Agriculture and Livestock at Ward and Sub-county level for more advice on the best farm practices.

**Note: 1 mm of rainfall is equivalent to 1 litre of rainfall per square meter.**

**KEY OF SCIENTIFIC WORDS USED**

Rainfall categories	
Range	Category
<5 mm	Light
5 - 20mm	Moderate
20 - 50mm	Heavy
>50mm	Very heavy
Rainfall coverage	
Term	Meaning
Most Places	Between 66% and 100%
Several Places	Between 33% and 66%
Few Places	Below 33%
<p><b>Ushauri wa Idara ya Utabiri wa Hali ya Hewa:</b>  Msimu wa baridi wa June-July-August (JJA) umefika mwisho katika Kaunti ya Kitui. Wakulima wanashauriwa waendeleo kuvuna chakula chao na kuianika vizuri kwa jua hili kuepukana na athari za sumu kuvu yaani 'aflatoxin' na pia waanze matayarisho ya mashamba yao kwa ajiri ya msimu za Vuli.</p>	

**For further information, please contact:**



Daniel M. Mbithi

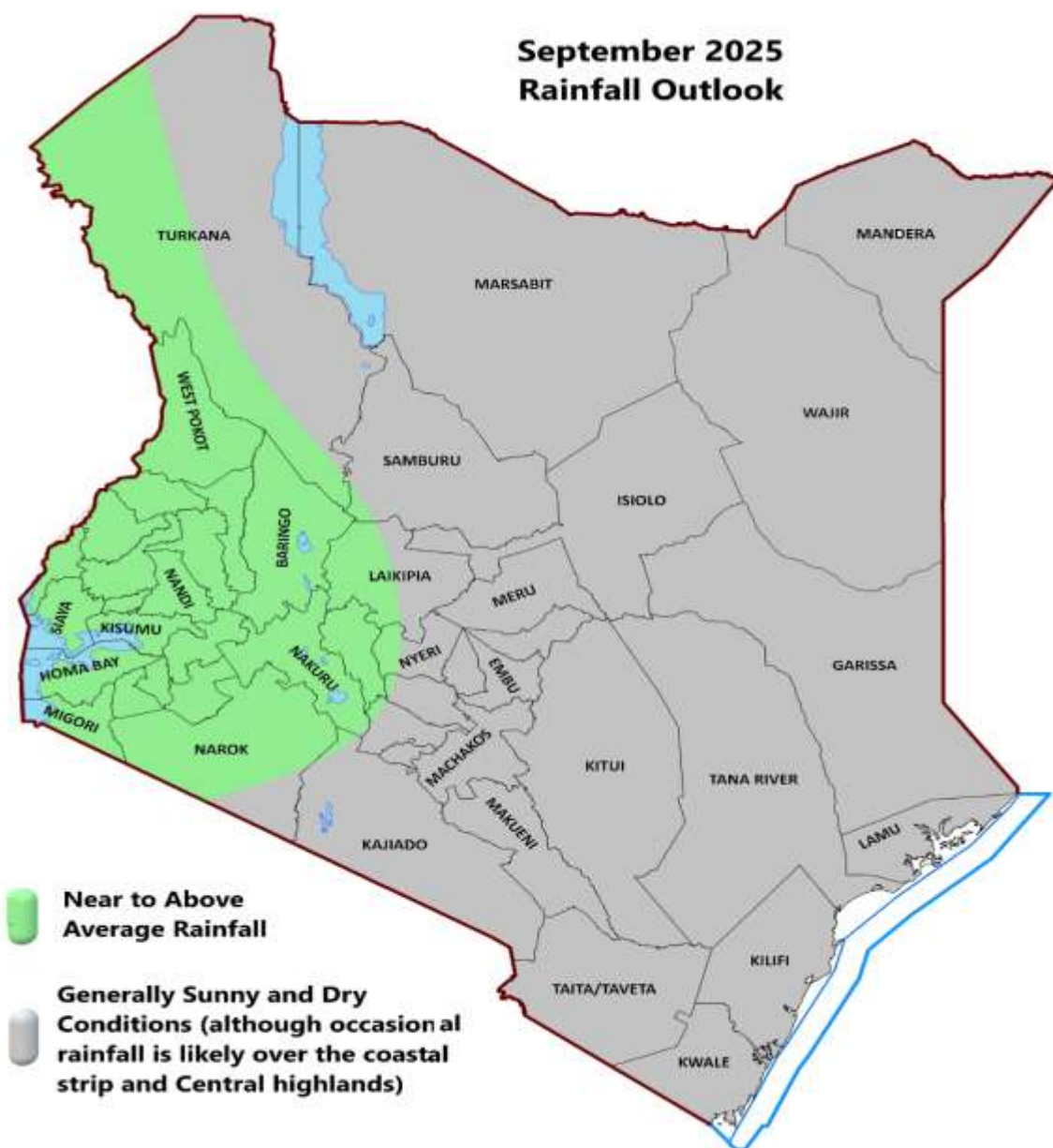
County Director of Meteorological Services

Mobile: 0715255171

Email: [mbithi\\_d@yahoo.com](mailto:mbithi_d@yahoo.com)

You can find more information about the climate and weather in Kenya on the KMD website <http://www.meteo.go.ke/>

## Annex I: Rainfall forecast for the month of September 2025



*NB: Below normal rainfall expected over most places during the month of September 2025 in the County*

## Annex II: Rainfall climatology for the month of September 2025

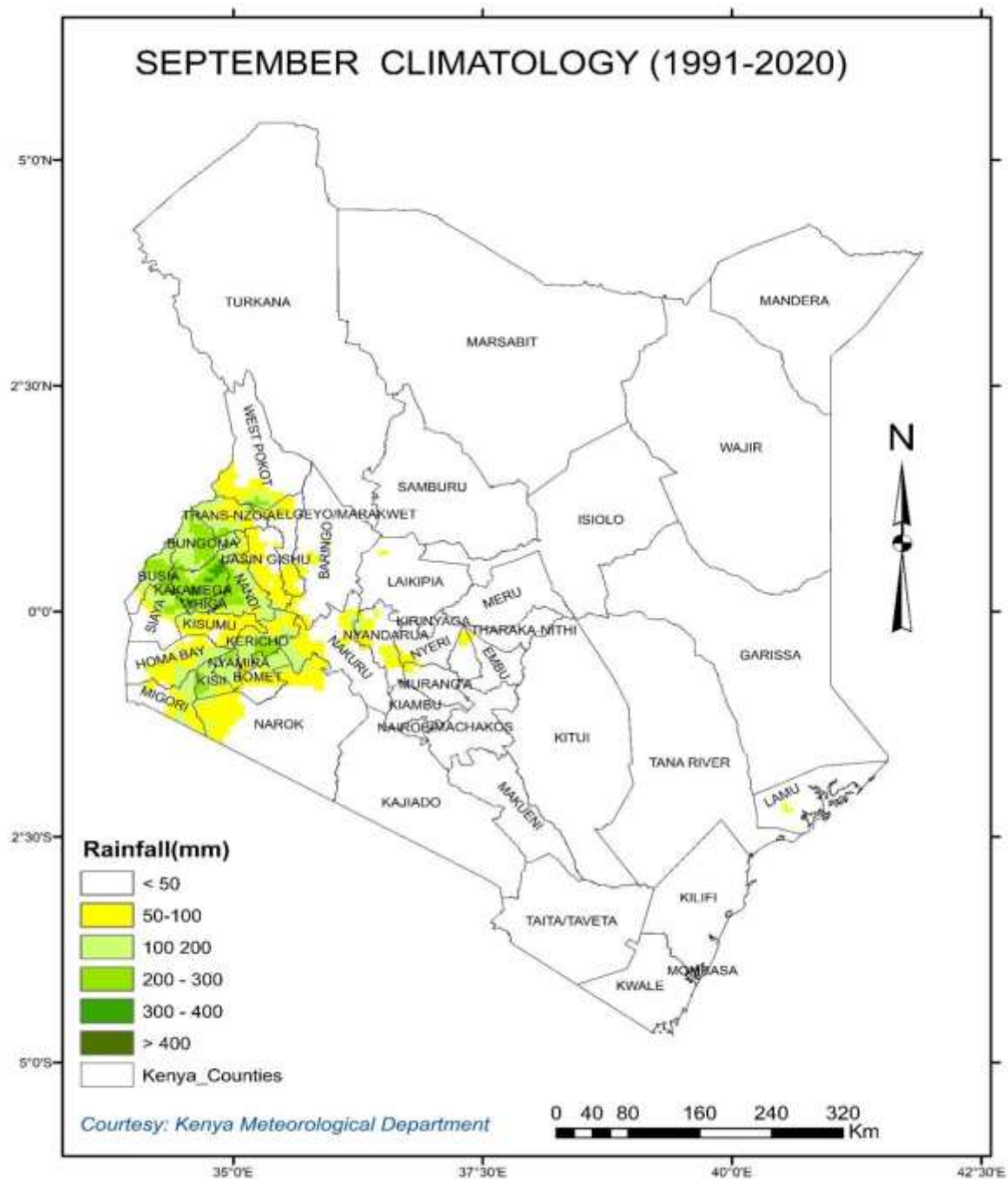
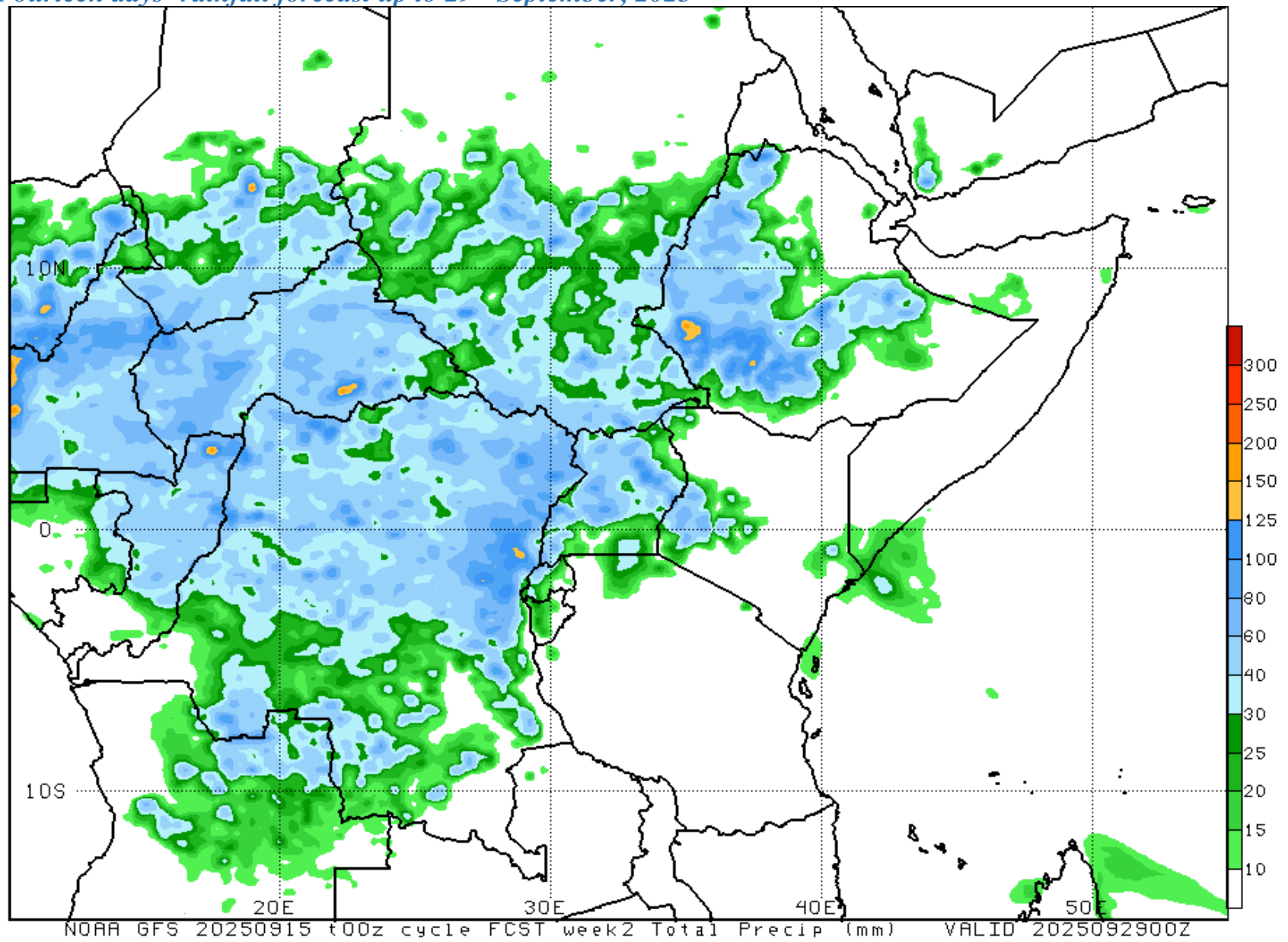


Fig 1b: Drier than normal conditions expected over most places during the month of September 2025 in the County

*Annex III: Fourteen days' rainfall forecast up to 29<sup>th</sup> September, 2025*



*NB: Drier than normal conditions expected over most parts of the County between 15<sup>th</sup> to 29<sup>th</sup> September, 2025*