



REPUBLIC OF KENYA
MINISTRY OF ENVIRONMENT, CLIMATE CHANGE & FORESTRY
KENYA METEOROLOGICAL DEPARTMENT
VIHIGA COUNTY

SEASONAL FORECAST FOR OCT NOV DEC 2025

Date of issue: 15th, September, 2025

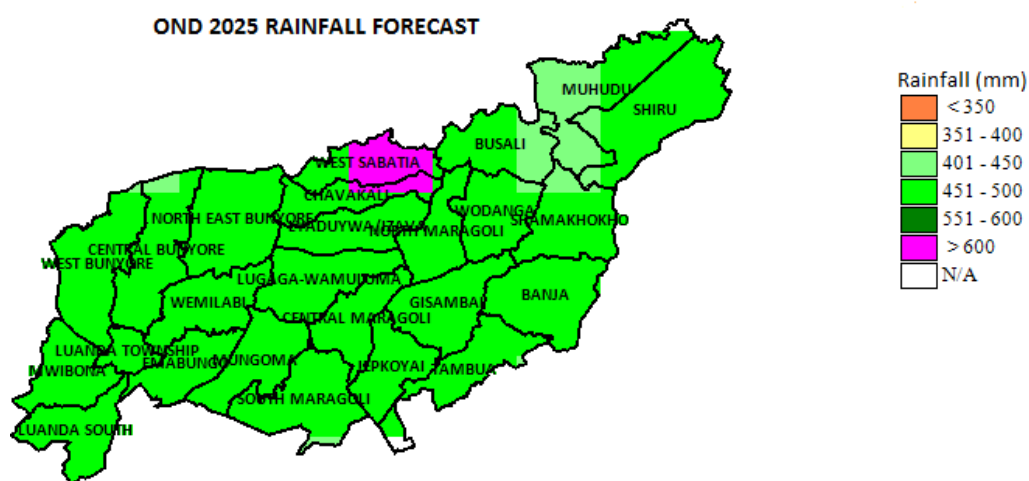


Fig 1. Forecast rainfall in Vihiga County during the October, November, December, 2025 rainy season

SUMMARY OF RAINFALL OUTLOOK

Rainfall in Vihiga County during October, November, December, 2025 rainy season is likely to be ***near to slightly above the long-term average amounts for the season.***

The map above (Fig 1) shows the amount of rainfall that is forecast to fall in each part of Vihiga County during the coming rainy season.

The map below (Fig 2) shows average rainfall in each part of the county during the same three-month period.

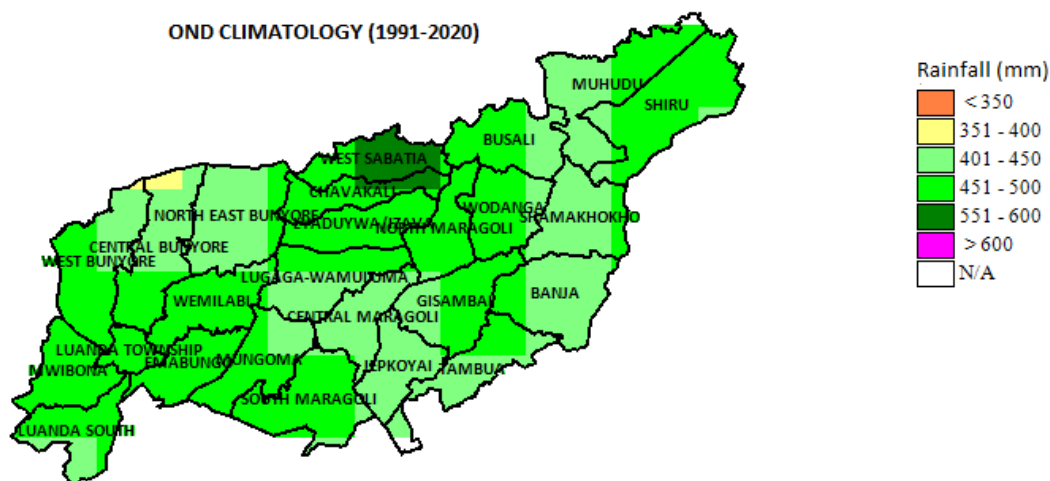


Fig 2. Average rainfall in Vihiga County during the October, November, December rainy season.

This map shows the average rainfall experienced during the same three-month period over 30 years between 1991 and 2020

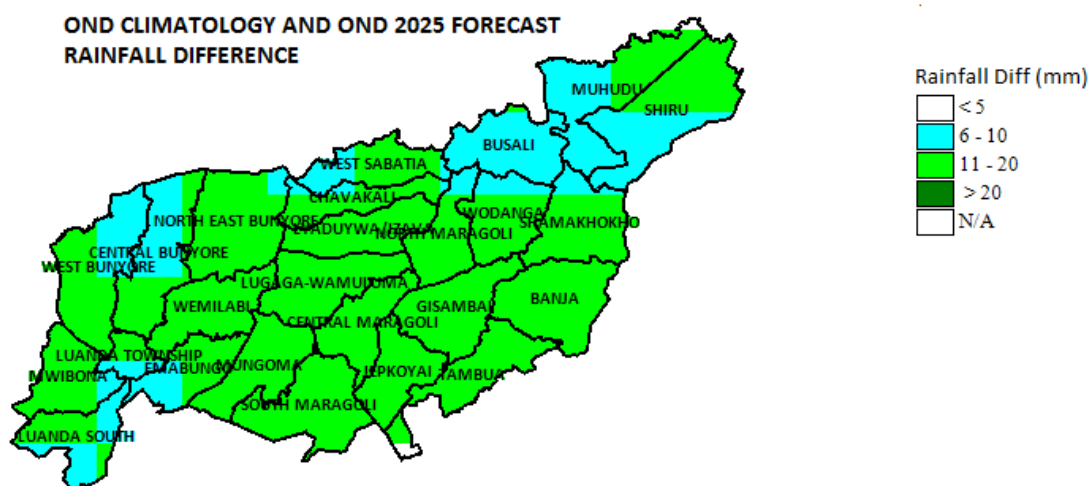


Fig 3. Rainfall difference between OND average and forecasted OND 2025 for Vihiga county

Forecast

Start of rainy season (onset): Rainfall is expected to continue from September 2025

End of rainy season (cessation): Rainfall is likely to cease between 16th December 2025 and 30th December 2025.

Probable amount of rainfall: (400-620) millimetres – This is slightly above the average rainfall received in this season over the past 30 years, Fig 3

Distribution of rainfall over time: Fair to good rainfall distribution is likely during the months of October and November 2025. Occasional short dry spells are likely. Peak rainfall month is expected to be November 2025.

Commentary of County Meteorological Director:

The county is likely to receive *near to slightly above the long-term average rainfall amounts for the season* which is likely to enhance agriculture activities.

- Farmers to consult local agricultural extension officer for advice on how to plan farming activities in the light of this forecast.
- Expect rainfall storms that are likely to be associated with strong wind, heavy rain, lightning and hailstones. To be safe from lightning strikes avoid sheltering under trees and near grilled door and windows when it is raining.
- Mud/landslides and floods are likely in areas that experience these negative impacts. Communities living in these areas should take precautions and be on high alert since such phenomena may be triggered by the expected rainfall.
- Vector-borne diseases e.g. malaria, are likely to emerge in the county
- Some roads are likely to become slippery
- Harvesting of rainfall water for future use and tree planting is encouraged
- The county should take full advantage of the positive impacts and at the same time avoid negative impacts that are likely to be experienced.

NB: This outlook should be used together with 24-hour, 5-day, 7-day, monthly, special forecasts and regular updates issued by KMD. Monthly and weekly county forecasts are available from County Meteorological Office.

SMS VERSION OF SEASONAL FORECAST

Vihiga seasonal OND 2025: For zones 1, 2, 3 Near to Above average rainfall. Onset; Continuation from September 2025. Cessation; Between 16th and 30th of December 2025. Vol 400-620mm, fair to good distribution. Most rain November-KMD

For further information on weather, please contact:
County Director of Meteorology: Godfrey Omusonga
Mobile: 0722581142
Email: omusongagodfrey@yahoo.com

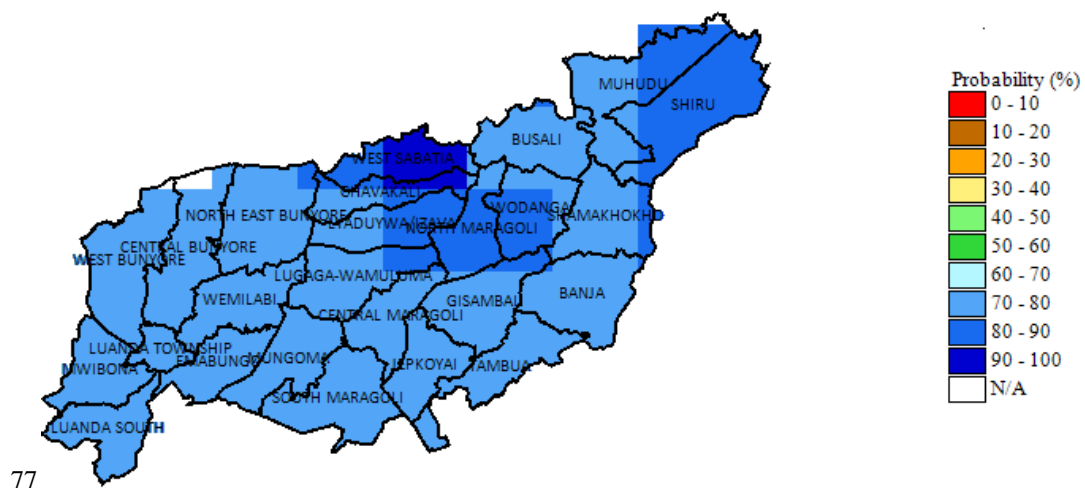


Fig 4. Forecast probability of receiving more than 350mm of rainfall for OND 2025

NOTE:

OND-October, November, December

