



# REPUBLIC OF KENYA

MINISTRY OF ENVIRONMENT AND FORESTRY

KENYA METEOROLOGICAL DEPARTMENT

## BOMET COUNTY METEOROLOGICAL OFFICE

SEASONAL FORECAST FOR *OCTOBER, NOVEMBER AND DECEMBER, 2025*

Date of issue: 2<sup>ND</sup> SEPTEMBER, 2025

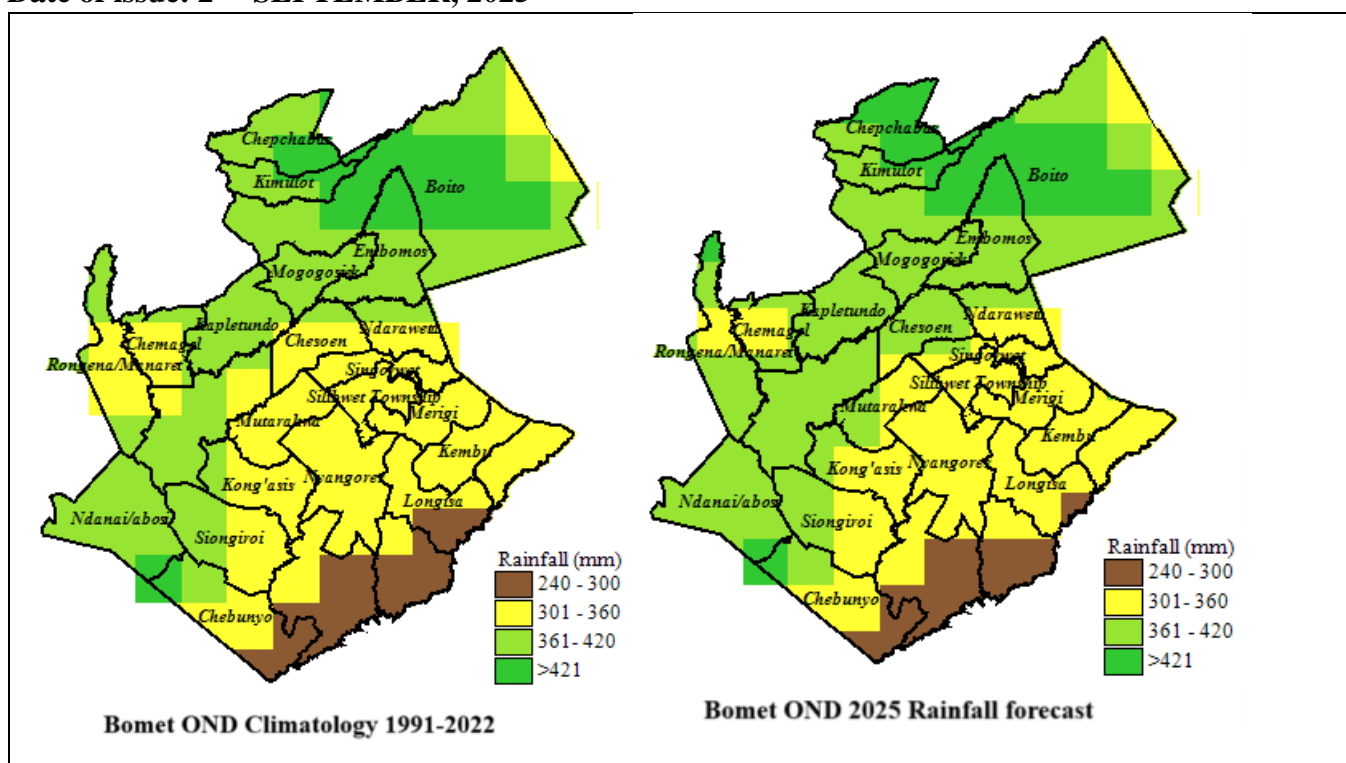


Fig 1. Bomet County Climatology (average) of 30 years' (1991-2022) and rainfall forecast during October, November and December, 2025 season.

## SUMMARY OF RAINFALL OUTLOOK

Rainfall in **Bomet County** during **October, November and December, OND, 2025** short rain season is forecasted to be, wet, i.e **near normal** to **above normal**. The amount of rainfall is expected to be above normal in Konoin, Sotik, Bomet Central and near normal in Chepalungu and parts of Bomet East sub Counties.

The map on page 1 (Figures 1) shows the OND long term climatology 1991-2022 and the amount of rainfall in mm that is forecast to be received in each ward of **Bomet County** during the OND 2025.

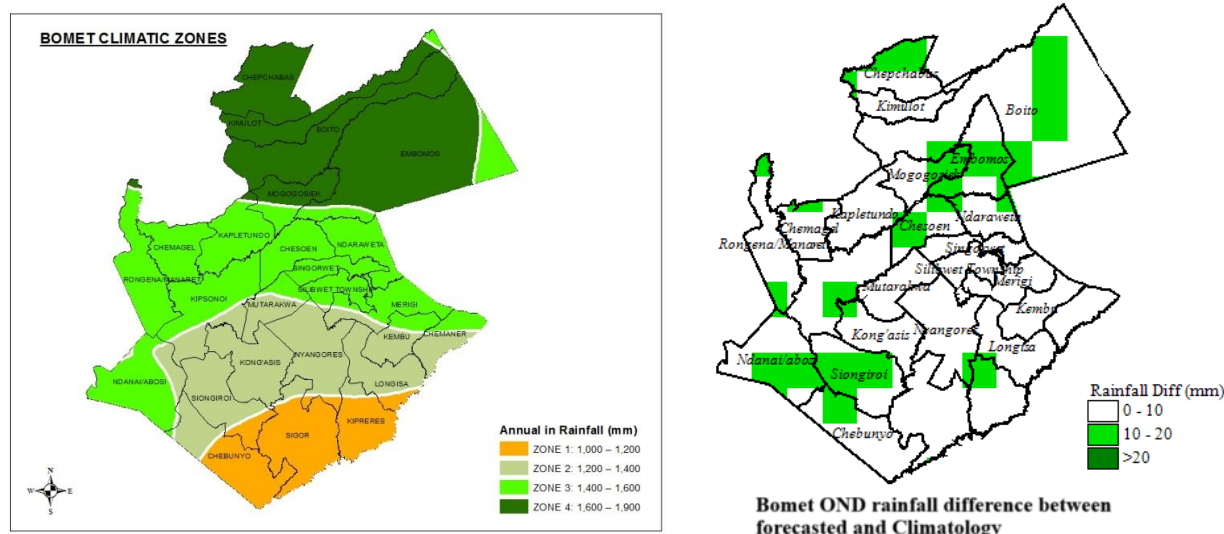


Fig 2. The four main climatic zones of Bomet County based on Rainfall distribution and rainfall difference between OND Climatology and forecast.

Figure 2 shows the rainfall climatic zones within Bomet County. The annual rainfall amounts ranges between 1000mm to over 1600mm. The difference between forecast and climatology is positive 0 to 20 mm meaning near normal to above normal rainfall in the County during OND 2025.

## 2.0 MARCH APRIL AND MAY, 2025 RAINFALL PERFORMANCE

The analysis of the March, April and May, MAM rainfall season performance indicates that most parts of the County received normal to above normal rainfall i.e. more than 75% of long term mean. The start and cessation of rain was continued from February and also continued into June, 2025; respectively, with dry days in between the season.

### Forecast by climatic zone

#### Zone 1 (Chebunyo, lower Kiprerres and Sigor)

**Start of rainy season (onset):** (Continues from September 2025)

**End of rainy season (cessation):** (3<sup>rd</sup> to 4<sup>th</sup> week of December, 2025)

**Probable amount of rainfall:** (250mm to 300mm)

**Distribution of rainfall over time:** dry days in between rain days are likely to be experienced during the season.

**Commentary of County Meteorological Director:**

- Continuous and intermittent rainfall is expected in the afternoon and night during the forecast period.
- Lightening, thunderstorm and flash floods are expected

**Advice to farmers from Directorate of Agriculture:**

- Consult your local agricultural extension Officers for advice on how to plan and Schedule farming activities in the light of this forecast.

**Zone 2 *Kembu, lower Longisa and Mutarakwa and Siongiroi***

**Start of rainy season (onset):** *(Continuous from September 2025)*

**End of rainy season (cessation):** *(continues into January 2026)*

**Probable amount of rainfall** *(300mm to 350 mm)*

**Distribution of rainfall over time:** Most rain likely to fall in October and November. Dry days in between rain days are likely to be experienced during the season. This is likely to be more pronounced in the Months of October and December. Flash floods are also going to be experienced in the Months of October and November.

**Commentary of County Meteorological Director:**

- Occasionally expect heavy rain, flash floods and strong winds during the season.
- Lightning strikes, thunderstorms are highly probable and also landslides/mudslides in November and December.

**Advice to farmers from Directorate of Agriculture, livestock and Fisheries:**

Farmers are advised to liaise with the County and Sub-County Offices of Agriculture/Livestock/Fisheries for advice on the appropriate seeds to be planted. The expected timely onset and rainfall amounts in this Sub-Counties is conducive for agriculture and livestock farming.

**Zone 3 *Silibwet (Bomet) Township, Merigi, Ndanai/Abosi, Siongiroi***

**Start of rainy season (onset):** *(Continuous from September, 2025)*

**End of rainy season (cessation):** *(Continues into January 2026)*

**Probable amount of rainfall:** *(350mm to 400mm)*

**Distribution of rainfall over time:** Rainfall will be evenly distributed over the season with November and December recording the highest amount. Dry spells will be experienced in between the season.

**Commentary of County Meteorological Director:**

- Occasionally expect heavy rain, flash floods, strong winds, and hailstones during the season.
- Lightning strikes are highly probable and also landslides/mudslides in November during the peak rain season

**Advice to farmers from Directorate of Agriculture:**

- Farmers are advised to liaise with the County and Sub-County Officers of Agriculture for advice on the appropriate farming activities. The continuous rain, expected rainfall amounts and fair distribution in the Zone is conducive for agriculture.

**Zone 4 Embomos, Boita, Chepchas, Kimulot**

**Start of rainy season (onset):** (*Continuous from September, 2025*)

**End of rainy season (cessation):** (*Continuous into January, 2026*)

**Probable amount of rainfall:** More than 380mm

**Distribution of rainfall over time:** Rain will be equally distributed in this Zone.

**Commentary of County Meteorological Director:**

- Occasionally expect heavy rain, strong winds, and hailstones during the season.
- Lightning strikes, thunderstorm are highly probable and also landslides/mudslides attaining peak during the month of November.

**Advice to farmers from Ministry of Agriculture:**

- Farmers are advised to liaise with the County and Sub-County Offices of Agriculture for advice on the appropriate farming activities. The continuous rain, expected rainfall amounts and evenly distribution in the Zone is highly conducive for agriculture.

Please use this seasonal forecast in conjunction with the monthly and weekly weather forecasts for **Bomet** County, issued by the County Director of Meteorology and daily weather forecasts issued by the Director Kenya Meteorological Department.

*For further information, please contact:*

*County Director of Meteorology: Constance C. Okuku*

*Mobile: 0722639354*

*Email: colnex2004@yahoo.co.uk*

**You can find more information about the climate and weather in Kenya on the KMD website <http://www.meteo.go.ke/>**