

## OCTOBER NOVEMBER DECEMBER 2025 AGRO-WEATHER ADVISORIES FOR MERU COUNTY OND 2025 SEASONAL FORECAST SUMMARY

- ⇒ *Rainfall expected to be depressed across most parts of County*
- ⇒ *Onset expected between 3<sup>rd</sup> and 4<sup>th</sup> of week of October.*
- ⇒ *Distribution expected to be poor, both in time and space*
- ⇒ *Cessation expected to be in the 3<sup>rd</sup> to 4<sup>th</sup> week of December.*

### OND 2025 AGRO-WEATHER ADVISORY FOR UPPER ZONE,



These areas includes (Abogeta West, Abogeta East, Igoji West, Igoji East , Nkuene,, the upper part of Abothuguchi central and West, Ntima east and west, Municipality, Nyaki west, Mbeu, Nkomo, Mikinduri, , Kiguchu, Kiengo Antubuchu, upper part of Kibiichia, upper part of Kirwa Naare, akachiu, Maua ) areas are likely to receive **561-810 mm of rainfall**

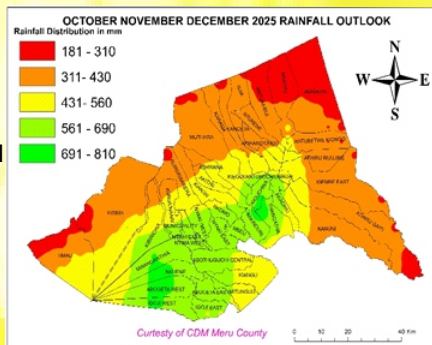
### IMPACTS / OPPORTUNITIES

- “ Soil erosion is likely to occur on sloppy farms
- “ There is likely to be a good production of legumes and fodder
- “ Harvest in general is likely decline.
- “ Shortage of water for crop likely to occur
- “ Crops are likely to be affected by long dry



## ADVISORIES

- Embrace soil and water conservation-repair and maintain water holding infrastructures in the farm
- Plant mostly legumes Rose Coco, Yellow beans
- Carry out water harvesting e.g., road run-off, roof catchment
- Farmer are encouraged to use proved climate smart techniques which may help crops to cope with prolonged dry spell
- Farmers should make plans to store/conserv the harvests food for later use, don't sell everything
- Repair/lay out terraces and plant Napier grass on terraces
- Avoid ploughing or planting up/down slope
- Construct structure to store crop residues to serve as folder
- Don't plant perennial trees unless you have water
- Plant short- growing maize variety (maize 5 series )
- Practice inter-cropping
- Follow and apply early warning on weather in the farming calendared e.g. when to plant



## OCTOBER NOVEMBER DECEMBER 2025 AGO-WEATHER ADVISORIES FOR MERU COUNTY OND 2025 SEASONAL FORECAST SUMMARY

- ⇒ *Rainfall expected to be depressed across most parts of County*
- ⇒ *Onset expected between 3<sup>rd</sup> and 4<sup>th</sup> of week of October.*
- ⇒ *Distribution expected to be poor, both in time and space*
- ⇒ *Cessation expected to be in the 3<sup>rd</sup> to 4<sup>th</sup> week of December.*

### OND 2025 AGRO-WEATHER ADVISORY FOR Middle ZONE

These areas are (Kiirua-Naari, Kianjai, Akithi, Athwana, Abogeta East, Mitunguu, Mwangathia, Kiagu, Akithi, Kiegoi Antobochiu, Maua and Akachiu).

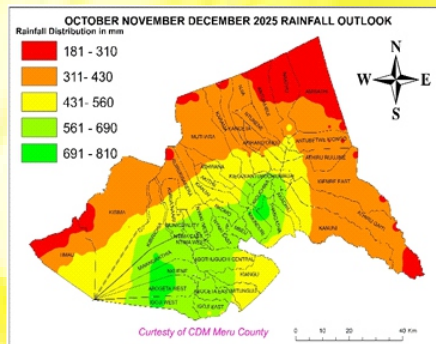
These areas are likely to receive depressed rainfall ranging 431- 560mm of Rainfall with prolonged dry spell .

### Advisories

- ⇒ Plant short growing crops (mostly legumes )
- ⇒ Farmers are encouraged to practice conservation agriculture
- ⇒ Farmers are encouraged to conserve fodder.
- ⇒ Carry out water harvesting e.g. road run-off, roof catchment etc.
- ⇒ Timely planting
- ⇒ Dry planting where there is water
- ⇒ Activate conflict resolution committees
- ⇒ Plant Yellow beans, Garden beans Ndengu pigeon peace
- ⇒ Follow and apply early warning on weather in the farming calendar
- ⇒ Plant sun flowers
- ⇒ Inform the authority in case of forest and water catchment invasion
- ⇒ If you are to plant maize consider DL Variety
- ⇒ Plant fodder to sell
- ⇒ Encouraged to practices inter-cropping

### Impacts /Opportunities

- ◆ Expected general decline in crop performance.
  - ◆ Expected movement of wildlife in search of pasture and water resulting to increased human wildlife conflict.
  - ◆ Expected increase in food prices
  - ◆ Expected livestock incursion from drier areas to moderate areas causing conflicts between pastoral and farming
- Communities are likely to encroachment the forest and water catchment areas



## OCTOBER NOVEMBER DECEMBER 2025 AGO-WEATHER ADVISORIES FOR MERU COUNTY OND 2025 SEASONAL FORECAST SUMMARY

- ⇒ *Rainfall expected to be depressed across most parts of County*
- ⇒ *Onset expected between 3<sup>rd</sup> and 4<sup>th</sup> of week of October.*
- ⇒ *Distribution expected to be poor, both in time and space*
- ⇒ *Cessation expected to be in the 3<sup>rd</sup> to 4<sup>th</sup> week of December.*



### OND 2025 AGRO-WEATHER ADVISORY FOR LOWER ZONE

These areas are (Antuambui, Naathu, Athiru Rujine, Kanuni, Antubetwe Kiongo and Athiru Gaiti wards. These areas are likely to receive LESS 430 mm of rainfall. Some parts of Amwathi, Naathu, Antuambui), are likely to receive below 300 mm of rainfall. Some areas under Wheat, Irish Potatoes and Fodder zones like lower parts of Timau (Ontulili, Katheri and Antuba Mwitui) Kisima (Lower areas of Kithithina, Maritati, Kabubungi, Karukunku, Karimba and Kieni kiandegde and lower areas of kiambogo) and area bordering Meru National park Athiru Gaiti will receive between **181-310mm**

### Impacts /Opportunities

- ◆ Human Wildlife conflict
  - ◆ Resource based conflict
  - ◆ Drought
  - ◆ High pest infestation
  - ◆ Crop failure
- Encroachment of the forest and water

- ⇒ Early planting
- ⇒ Plant short season crops (Cow peace green grams, Sorghum, Millet and early Pi
- ⇒ Practice conservation agriculture
- ⇒ Leave trash lines
- ⇒ Increased surveillance by KWS
- ⇒ Maintenance of electric fences
- ⇒ Relief fodder
- ⇒ Destocking
- ⇒ Take livestock insurance cover
- ⇒ Activate peace committees
- ⇒ Plant short growing grass for folder
- ⇒ Plant short growing grass for folder
- ⇒ Design water points for wild animals to reduce conflicts
- ⇒ Practice inter-cropping
- ⇒ Follow and apply early warning on weather in the farming calenderer

