



KENYA
METEOROLOGICAL
DEPARTMENT

For further info:

Contact: Daniel M. Mbithi

Mobile No. 0715255171

Email: mbithi_d@yahoo.com

County Director of Meteorological Services Kitui County

Weekly Weather forecast for Kitui County

1.1 PART I: WEEKLY FORECAST FOR THE PERIOD 7th to 13th October 2025 Weather forecast Table

Sub County	Ward	Probable Total weekly amount (mm)	Probable weather Notes: Light rains <1-5 mm; Moderate rains 5-20 mm; Heavy rains 20-50 mm; Very heavy rains >50 mm							Winds (km/h kilometers per hour)	Temp (Tmax °C & Tmin °C)
			Tue	Wed	Thur	Fri	Sat	Sun	Mon	Weekly	Weekly
Mwingi West	Nguutani	<5 mm	Light rains	Light rains	Light rains	Sunny & Dry	Sunny & Dry	Sunny & Dry	Sunny & Dry	Easterly 21.6 km/h	Max 26-30 °C Min 15-19 °C
	Kyome/Thaana	<5 mm	Light rains	Light rains	Light rains	Sunny & Dry	Sunny & Dry	Sunny & Dry	Sunny & Dry		
	Kiomo/Kyethani	<5 mm	Light rains	Light rains	Light rains	Sunny & Dry	Sunny & Dry	Sunny & Dry	Sunny & Dry		
	Migwani	<5 mm	Light rains	Light rains	Light rains	Sunny & Dry	Sunny & Dry	Sunny & Dry	Sunny & Dry		
Mwingi North	Ngomeni	0.0 mm	Sunny & Dry	Sunny & Dry	Sunny & Dry	Sunny & Dry	Sunny & Dry	Sunny & Dry	Sunny & Dry	Easterly 25.2 km/h	Max 29-34 °C Min 17-21 °C
	Kyuso	0.0 mm	Sunny & Dry	Sunny & Dry	Sunny & Dry	Sunny & Dry	Sunny & Dry	Sunny & Dry	Sunny & Dry		
	Tseikuru	<10 mm	Mod rains	Light rains	Light rains	Sunny & Dry	Sunny & Dry	Rain	Sunny & Dry		
	Tharaka	<5 mm	Light rains	Light rains	Light rains	Sunny & Dry	Sunny & Dry	Rain	Sunny & Dry		
	Mumoni	<5 mm	Light rains	Light rains	Light rains	Sunny & Dry	Sunny & Dry	Rain	Sunny & Dry		
Mwingi Central	Central	0.0 mm	Sunny & Dry	Sunny & Dry	Sunny & Dry	Sunny & Dry	Sunny & Dry	Sunny & Dry	Sunny & Dry		Max 28-32 °C
	Kivou	0.0 mm	Sunny & Dry	Sunny & Dry	Sunny & Dry	Sunny & Dry	Sunny & Dry	Sunny & Dry	Sunny & Dry		
	Mui	0.0 mm	Sunny & Dry	Sunny & Dry	Sunny & Dry	Sunny & Dry	Sunny & Dry	Sunny & Dry	Sunny & Dry		

Sub County	Ward	Probable Total weekly amount (mm)	Probable weather Notes: Light rains <1-5 mm; Moderate rains 5-20 mm; Heavy rains 20-50 mm; Very heavy rains >50 mm							Winds (km/h kilometers per hour)	Temp (Tmax °C & Tmin °C)
			Tue	Wed	Thur	Fri	Sat	Sun	Mon	Weekly	Weekly
Sub County	Waita	0.0 mm	Sunny & Dry	Sunny & Dry	Sunny & Dry	Sunny & Dry	Sunny & Dry	Sunny & Dry	Sunny & Dry	Easterly 21.6 km/h	Min 16-20 °C
	Nuu	0.0 mm	Sunny & Dry	Sunny & Dry	Sunny & Dry	Sunny & Dry	Sunny & Dry	Sunny & Dry	Sunny & Dry		
	Nguni	0.0 mm	Sunny & Dry	Sunny & Dry	Sunny & Dry	Sunny & Dry	Sunny & Dry	Sunny & Dry	Sunny & Dry		
Kitui South	Ikanga/Kyatune	<10 mm	Light rains	Mod rains	Light rains	Sunny & Dry	Sunny & Dry	Sunny & Dry	Sunny & Dry	Easterly 25.2 km/h	Max 29-33 °C Min 17-20 °C
	Mutomo/Kibwea	<5 mm	Light rains	Light rains	Light rains	Sunny & Dry	Sunny & Dry	Sunny & Dry	Sunny & Dry		
	Kanziko/Simisi	<5 mm	Light rains	Light rains	Light rains	Sunny & Dry	Sunny & Dry	Sunny & Dry	Sunny & Dry		
	Mutha	0.0 mm	Sunny & Dry	Sunny & Dry	Sunny & Dry	Sunny & Dry	Sunny & Dry	Sunny & Dry	Sunny & Dry		
	Ikutha	<5 mm	Light rains	Light rains	Light rains	Sunny & Dry	Sunny & Dry	Sunny & Dry	Sunny & Dry		
	Athi	<5 mm	Light rains	Light rains	Light rains	Sunny & Dry	Sunny & Dry	Sunny & Dry	Sunny & Dry		
Kitui East	Chuluni	<5 mm	Light rains	Light rains	Light rains	Sunny & Dry	Sunny & Dry	Sunny & Dry	Sunny & Dry	Easterly 25.2 km/h	Max 26-33 °C Min 16-21 °C
	Nzambani	<5 mm	Light rains	Light rains	Light rains	Sunny & Dry	Sunny & Dry	Sunny & Dry	Sunny & Dry		
	Mutito/Kaliku	<5 mm	Light rains	Light rains	Light rains	Sunny & Dry	Sunny & Dry	Sunny & Dry	Sunny & Dry		
	Zombe/Mwitika	<5 mm	Light rains	Light rains	Light rains	Sunny & Dry	Sunny & Dry	Sunny & Dry	Sunny & Dry		
	Voo/Kyamatu	<5 mm	Light rains	Light rains	Light rains	Sunny & Dry	Sunny & Dry	Sunny & Dry	Sunny & Dry		
	Endau/Malalani	<5 mm	Light rains	Light rains	Light rains	Sunny & Dry	Sunny & Dry	Sunny & Dry	Sunny & Dry		
Kitui Rural	Mbitini	<5 mm	Light rains	Light rains	Light rains	Sunny & Dry	Sunny & Dry	Light rain	Sunny & Dry	Easterly 21.6 km/h	Max 27-30 °C Min 16-19 °C
	Kisasi	<10 mm	Mod rains	Mod rains	Light rains	Sunny & Dry	Sunny & Dry	Light rain	Sunny & Dry		
	Kyangi	<5 mm	Light rains	Light rains	Light rains	Sunny & Dry	Sunny & Dry	Sunny & Dry	Sunny & Dry		
	Yatta/Kwa Vonza	<10 mm	Mod rains	Light rains	Light rains	Sunny & Dry	Sunny & Dry	Sunny & Dry	Sunny & Dry		
Kitui West	Kauwi	<5 mm	Light rains	Light rains	Light rains	Sunny & Dry	Sunny & Dry	Light rain	Sunny & Dry	Easterly 21.6 km/h	Max 24-29 °C Min 14-17 °C
	Mutonguni	<5 mm	Light rains	Light rains	Light rains	Sunny & Dry	Sunny & Dry	Light rain	Sunny & Dry		
	Matinyani	<5 mm	Light rains	Light rains	Light rains	Sunny & Dry	Sunny & Dry	Light rain	Sunny & Dry		
	Kwa Mutonga/Kithumula	<5 mm	Light rains	Light rains	Light rains	Sunny & Dry	Sunny & Dry	Light rain	Sunny & Dry		
Kitui Central	Kyangwithya East	<5 mm	Light rains	Light rains	Light rains	Sunny & Dry	Sunny & Dry	Light rain	Sunny & Dry		
	Kyangwithya West	<5 mm	Light rains	Light rains	Light rains	Sunny & Dry	Sunny & Dry	Light rain	Sunny & Dry		

Sub County	Ward	Probable Total weekly amount (mm)	Probable weather Notes: Light rains <1-5 mm; Moderate rains 5-20 mm; Heavy rains 20-50 mm; Very heavy rains >50 mm							Winds (km/h kilometers per hour)	Temp (Tmax °C & Tmin °C)
			Tue	Wed	Thur	Fri	Sat	Sun	Mon	Weekly	Weekly
	Township	<5 mm	<i>Light rains</i>	<i>Light rains</i>	<i>Light rains</i>	<i>Sunny & Dry</i>	<i>Sunny & Dry</i>	<i>Light rain</i>	<i>Sunny & Dry</i>	Easterly 21.6 km/h	Max 25-30 °C Min 15-20 °C
	Mulango	<5 mm	<i>Light rains</i>	<i>Light rains</i>	<i>Light rains</i>	<i>Sunny & Dry</i>	<i>Sunny & Dry</i>	<i>Light rain</i>	<i>Sunny & Dry</i>		
	Miambani	<5 mm	<i>Light rains</i>	<i>Light rains</i>	<i>Light rains</i>	<i>Sunny & Dry</i>	<i>Sunny & Dry</i>	<i>Light rain</i>	<i>Sunny & Dry</i>		

1.2 Review for September 2025

The county remained generally dry. Both maximum and minimum temperatures were warmer than average over most parts of the county. Strong southerly to south-easterly winds with speeds exceeding 25 knots (12.86 m/s) were experienced occasionally over the county during the month.

1.3 Outlook for October 2025

Kitui county is likely to experience predominantly dry weather conditions during October. However, occasional rainfall may occur, with amounts expected to be near or slightly below the long-term average for the month.

1.4 Expected Onset Dates

The predicted onsets, cessations, and distribution of rainfall were derived from dynamical models and statistical analysis of past years. The analogue year selected was 2021, which exhibited characteristics similar to those expected in 2025. The rainfall outcomes from this analogue year are provided for reference only and should not be interpreted as part of the forecast; rather, they illustrate the range of possible outcomes under broadly similar global climate conditions.

Kitui county likely to realize the onset during the third to fourth week of November. However, a few areas may experience occasional rainfall at the beginning of the month which will be followed by a dry spell.

1.5 PART II: FURTHER ADVISORIES

SUMMARY ABOUT THE WEEKLY FORECAST:

Sunny intervals are expected during the day while nights are likely to be partly cloudy. However, there is a possibility of morning rains as well as afternoon and night showers occurring over few places during the early days of the forecast period. Maximum temperatures are expected to range from 24°C - 34°C, while minimum temperatures are expected to range from 14°C - 21°C. Strong southerly to south-easterly winds with speeds exceeding 25 knots (12.86 m/s) are expected to persist in most parts of the County.

NB. Expected OND 2025 season onset 3rd to 4th week November 2025; expected OND 2025 season cessation 3rd to 4th week December 2025; season duration 30 days; distribution poor in time and space; general outlook Below Normal!!!

Community members advised to inculcate the culture of being “weather – ready”, “climate – smart” and “water – wise” as we navigate the unfamiliar and chaotic environment of a changing climate. This will help them adapt to a changing climate while at the same time mitigating the adverse effects of Climate Change and Variability, hence becoming more resilient to the vagaries of Climate Change.

In light of this weather forecast, farmers are also advised to consult with respective local extension officers from the County Ministry of Agriculture and Livestock at Ward and Sub-county level for more advice on the best farm practices.

Ushauri wa Idara ya Utabiri wa Hali ya Hewa:

Wakulima wanashauriwa waendelea na matayarisho ya mashamba yao kwa ajiri ya msimu za Vuli zinazotarajiwa mwezi wa Novemba.

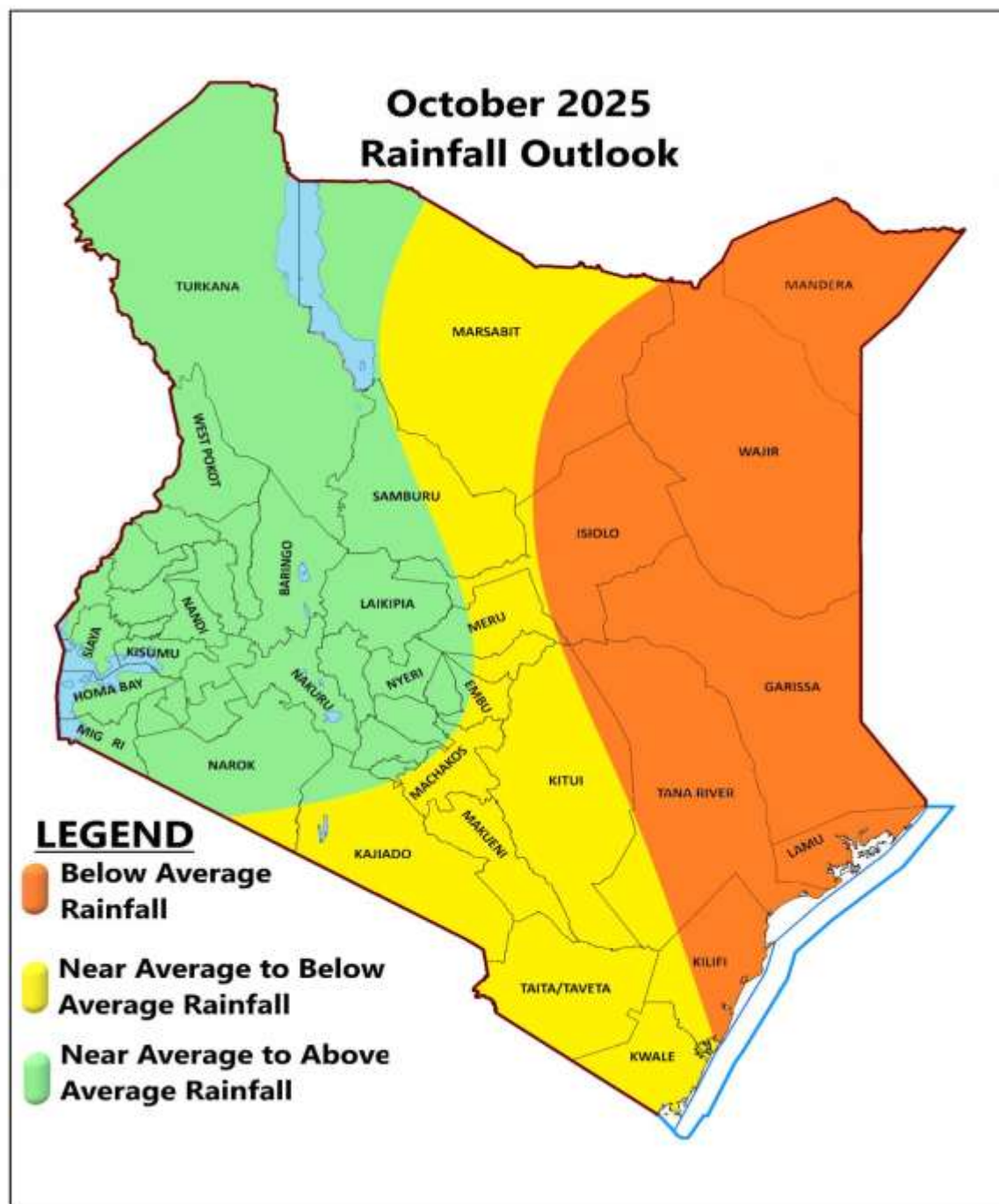
For further information, please contact:



Daniel M. Mbithi
County Director of Meteorological Services
Mobile: 0715255171
Email: mbithi_d@yahoo.com

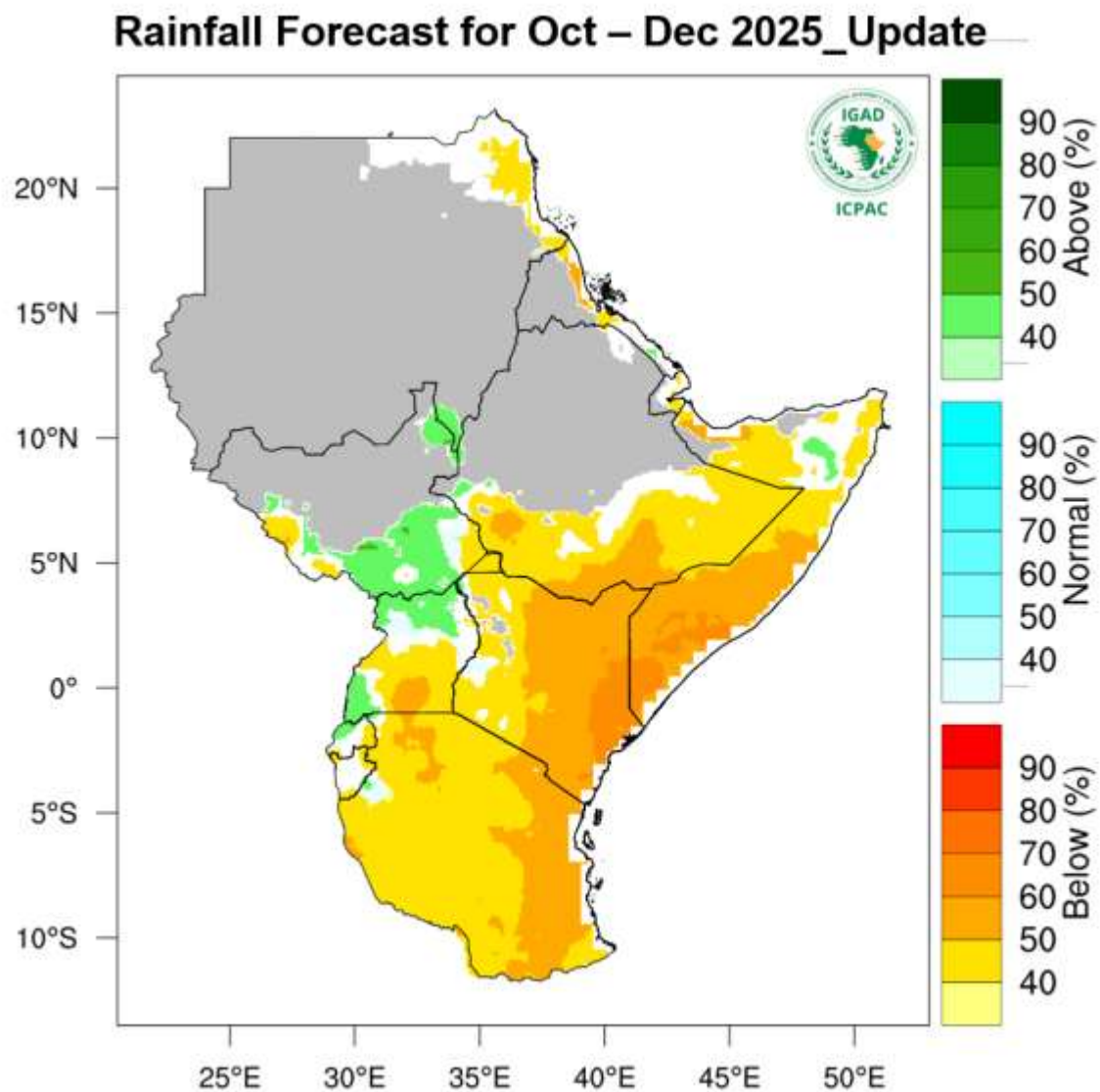
You can find more information about the climate and weather in Kenya on the KMD website <http://www.meteo.go.ke/>

Annex I: Rainfall forecast for the month of October 2025



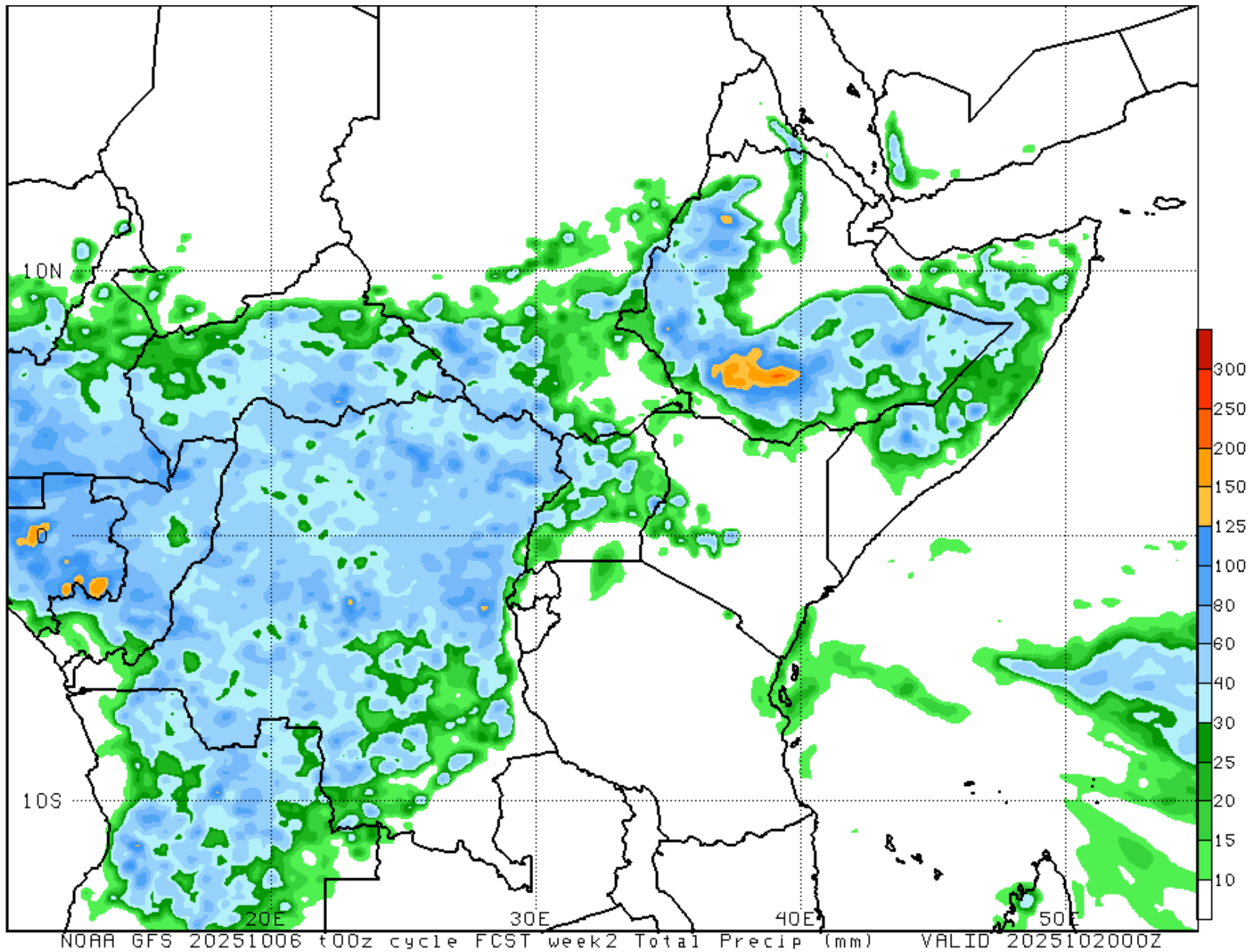
NB: Near to Below Average Rainfall expected over most places during the month of October 2025 in the County

Annex II: Rainfall outlook for the months of October-November-December (OND) 2025



NB: Drier than usual conditions expected over most places during the months of October, November and December 2025 in the County

Annex III: Fourteen days' rainfall forecast up to 20th October, 2025



NB: Drier than normal conditions expected over most parts of the County between 7th to 20th October, 2025

Annex IV: Interpretation of Terms Used

Rainfall categories	
Range	Category
<5 mm	Light
5 - 20mm	Moderate
20 - 50mm	Heavy
>50mm	Very heavy
Rainfall coverage	
Term	Meaning
Most Places	Between 66% and 100%
Several Places	Between 33% and 66%
Few Places	Below 33%
Note: 1 mm of rainfall is equivalent to 1 litre of rainfall per square meter.	

Annex V: Wards Map of Kitui County

