



KENYA  
METEOROLOGICAL  
DEPARTMENT

*For further info:*

*Contact: Daniel M. Mbithi*

*Mobile No. 0715255171*

*Email: mbithi\_d@yahoo.com*

County Director of Meteorological Services Kitui County

## Weekly Weather forecast for Kitui County

### 1.1 PART I: WEEKLY FORECAST FOR THE PERIOD 4<sup>th</sup> to 10<sup>th</sup> November 2025 Weather forecast Table

Sub County	Ward	Probable Total weekly amount (mm)	Probable weather Notes: Light rains <1-5 mm; Moderate rains 5-20 mm; Heavy rains 20-50 mm; Very heavy rains >50 mm							Winds (km/h kilometers per hour)	Temp (Tmax °C & Tmin °C)
			Tue	Wed	Thur	Fri	Sat	Sun	Mon	Weekly	Weekly
Mwingi West	Nguutani	>10 mm	Sunny & Dry	Sunny & Dry	Sunny & Dry	Rain	Rain	Rain	Rain	Easterly 18.0 km/h	Max 23-30 °C Min 17-20 °C
	Kyome/Thaana	>10 mm	Sunny & Dry	Sunny & Dry	Sunny & Dry	Rain	Rain	Rain	Rain		
	Kiomo/Kyethani	>10 mm	Sunny & Dry	Sunny & Dry	Sunny & Dry	Rain	Rain	Rain	Rain		
	Migwani	>10 mm	Sunny & Dry	Sunny & Dry	Sunny & Dry	Rain	Rain	Rain	Rain		
Mwingi North	Ngomeni	>10 mm	Sunny & Dry	Sunny & Dry	Sunny & Dry	Rain	Rain	Rain	Rain	Easterly 18.0 km/h	Max 24-31 °C Min 19-21 °C
	Kyuso	>10 mm	Sunny & Dry	Sunny & Dry	Sunny & Dry	Rain	Rain	Rain	Rain		
	Tseikuru	>10 mm	Sunny & Dry	Sunny & Dry	Sunny & Dry	Rain	Rain	Rain	Rain		
	Tharaka	>10 mm	Sunny & Dry	Sunny & Dry	Sunny & Dry	Rain	Rain	Rain	Rain		
	Mumoni	>10 mm	Sunny & Dry	Sunny & Dry	Sunny & Dry	Rain	Rain	Rain	Rain		
Mwingi Central	Central	>10 mm	Sunny & Dry	Sunny & Dry	Sunny & Dry	Rain	Rain	Rain	Rain		
	Kivou	>10 mm	Sunny & Dry	Sunny & Dry	Sunny & Dry	Rain	Rain	Rain	Rain		
	Mui	>10 mm	Sunny & Dry	Sunny & Dry	Sunny & Dry	Rain	Rain	Rain	Rain		

Sub County	Ward	Probable Total weekly amount (mm)	<b>Probable weather</b> <b>Notes:</b> Light rains <1-5 mm; Moderate rains 5-20 mm; Heavy rains 20-50 mm; Very heavy rains >50 mm							Winds (km/h kilometers per hour)	Temp (Tmax °C & Tmin °C)
			Tue	Wed	Thur	Fri	Sat	Sun	Mon	Weekly	Weekly
Sub County	Waita	>10 mm	Sunny & Dry	Sunny & Dry	Sunny & Dry	Rain	Rain	Rain	Rain	Easterly 18.0 km/h	Max 25-31 °C Min 18-21 °C
	Nuu	>10 mm	Sunny & Dry	Sunny & Dry	Sunny & Dry	Rain	Rain	Rain	Rain		
	Nguni	>10 mm	Sunny & Dry	Sunny & Dry	Sunny & Dry	Rain	Rain	Rain	Rain		
Kitui South	Ikanga/Kyatune	<10 mm	Sunny & Dry	Sunny & Dry	Sunny & Dry	Rain	Rain	Rain	Rain	Easterly 21.6 km/h	Max 26-32 °C Min 18-21 °C
	Mutomo/Kibwea	<10 mm	Sunny & Dry	Sunny & Dry	Sunny & Dry	Rain	Rain	Rain	Rain		
	Kanziko/Simisi	<10 mm	Sunny & Dry	Sunny & Dry	Sunny & Dry	Rain	Rain	Rain	Rain		
	Mutha	<10 mm	Sunny & Dry	Sunny & Dry	Sunny & Dry	Rain	Rain	Rain	Rain		
	Ikutha	<10 mm	Sunny & Dry	Sunny & Dry	Sunny & Dry	Rain	Rain	Rain	Rain		
	Athi	<10 mm	Sunny & Dry	Sunny & Dry	Sunny & Dry	Rain	Rain	Rain	Rain		
Kitui East	Chuluni	<10 mm	Sunny & Dry	Sunny & Dry	Sunny & Dry	Rain	Rain	Rain	Rain	Easterly 14.4 km/h	Max 24-32 °C Min 17-21 °C
	Nzambani	<10 mm	Sunny & Dry	Sunny & Dry	Sunny & Dry	Rain	Rain	Rain	Rain		
	Mutito/Kaliku	<10 mm	Sunny & Dry	Sunny & Dry	Sunny & Dry	Rain	Rain	Rain	Rain		
	Zombe/Mwitika	<10 mm	Sunny & Dry	Sunny & Dry	Sunny & Dry	Rain	Rain	Rain	Rain		
	Voo/Kyamatu	<10 mm	Sunny & Dry	Sunny & Dry	Sunny & Dry	Rain	Rain	Rain	Rain		
	Endau/Malalani	<10 mm	Sunny & Dry	Sunny & Dry	Sunny & Dry	Rain	Rain	Rain	Rain		
Kitui Rural	Mbitini	<10 mm	Sunny & Dry	Sunny & Dry	Sunny & Dry	Rain	Rain	Rain	Rain	Easterly 14.4 km/h	Max 25-28 °C Min 16-20 °C
	Kisasi	<10 mm	Sunny & Dry	Sunny & Dry	Sunny & Dry	Rain	Rain	Rain	Rain		
	Kyangi	<10 mm	Sunny & Dry	Sunny & Dry	Sunny & Dry	Rain	Rain	Rain	Rain		
	Yatta/Kwa Vonza	<10 mm	Sunny & Dry	Sunny & Dry	Sunny & Dry	Rain	Rain	Rain	Rain		
Kitui West	Kauwi	>10 mm	Sunny & Dry	Sunny & Dry	Sunny & Dry	Rain	Rain	Rain	Rain	Easterly 14.4 km/h	Max 22-28 °C Min 16-19 °C
	Mutonguni	>10 mm	Sunny & Dry	Sunny & Dry	Sunny & Dry	Rain	Rain	Rain	Rain		
	Matinyani	>10 mm	Sunny & Dry	Sunny & Dry	Sunny & Dry	Rain	Rain	Rain	Rain		
	Kwa Mutonga/Kithumula	>10 mm	Sunny & Dry	Sunny & Dry	Sunny & Dry	Rain	Rain	Rain	Rain		
Kitui Central	Kyangwithya East	>10 mm	Sunny & Dry	Sunny & Dry	Sunny & Dry	Rain	Rain	Rain	Rain		
	Kyangwithya West	>10 mm	Sunny & Dry	Sunny & Dry	Sunny & Dry	Rain	Rain	Rain	Rain		

Sub County	Ward	Probable Total weekly amount (mm)	Probable weather Notes: Light rains <1-5 mm; Moderate rains 5-20 mm; Heavy rains 20-50 mm; Very heavy rains >50 mm							Winds (km/h kilometers per hour)	Temp (Tmax °C & Tmin °C)
			Tue	Wed	Thur	Fri	Sat	Sun	Mon	Weekly	Weekly
	Township	>10 mm	<i>Sunny &amp; Dry</i>	<i>Sunny &amp; Dry</i>	<i>Sunny &amp; Dry</i>	<i>Rain</i>	<i>Rain</i>	<i>Rain</i>	<i>Rain</i>	Easterly 14.4 km/h	Max 23-28 °C Min 17-20 °C
	Mulango	>10 mm	<i>Sunny &amp; Dry</i>	<i>Sunny &amp; Dry</i>	<i>Sunny &amp; Dry</i>	<i>Rain</i>	<i>Rain</i>	<i>Rain</i>	<i>Rain</i>		
	Miambani	>10 mm	<i>Sunny &amp; Dry</i>	<i>Sunny &amp; Dry</i>	<i>Sunny &amp; Dry</i>	<i>Rain</i>	<i>Rain</i>	<i>Rain</i>	<i>Rain</i>		

## 1.2 Review for October 2025

Dry weather conditions prevailed over Kitui county during the month though significant amount of rainfall was received towards the end of the month. This is likely to be followed by a dry spell hence making it difficult to pronounce an onset. Cumulatively, below rainfall was recorded in the county. Both maximum and minimum temperatures were warmer than average over most parts of the county. Strong southerly to south-easterly winds with speeds exceeding 25 knots (12.86 m/s) were experienced occasionally over the county during the month.

## 1.3 The Climate Outlook for November 2025

The November 2025 climate outlook is based primarily on empirical statistical models that account for the expected evolution of global sea surface temperature (SST) anomalies and the Southern Oscillation Index (SOI). Current projections indicate that La Niña conditions are likely to persist through December 2025 to February 2026, with a transition to ENSO-neutral conditions expected during January to March 2026 (55% probability). The latest weekly Niño 3.4 SST index (week ending 26 October 2025) is -0.86°C.

Values have fluctuated around the La Niña threshold since mid-to-late September. Index readings between -0.8°C and +0.8°C are classified as ENSO-neutral, while sustained readings below -0.8°C for at least three months are indicative of La Niña conditions. The negative Indian Ocean Dipole (IOD) remains active, with the latest index at -1.61°C for the week ending 26 October.

Both La Niña and a negative IOD are typically associated with below-average rainfall over Kitui. These climate drivers are being closely monitored by the Kenya Meteorological Department (KMD), which will continue to provide regular updates.

## 1.4 Outlook for November 2025

The outlook for November 2025 indicates that several places in Kitui county are expected to receive near to below-average rainfall with some few parts of the county likely to experience below-average rainfall. Occasional flash floods are also likely to occur in some parts of Kitui as the seasonal rain peaks in the county.

## 1.5 Expected Onset Dates

The predicted onsets, cessations, and distribution of rainfall were derived from dynamical models and statistical analysis of past years. The analogue year selected was 2021, which exhibited characteristics similar to those expected in 2025. The rainfall outcomes from this analogue year are provided for reference only and should not be interpreted as part of the forecast; rather, they illustrate the range of possible outcomes under broadly similar global climate conditions.

## 1.6 PART II: FURTHER ADVISORIES

### **SUMMARY ABOUT THE WEEKLY FORECAST:**

Sunny intervals are expected during the day while nights are likely to be partly cloudy. However, there is a possibility of morning rains as well as afternoon and night showers occurring over several places during the weekend. Maximum temperatures are expected to range from 22°C - 32°C, while minimum temperatures are expected to range from 16°C - 21°C. Strong southerly to south-easterly winds with speeds exceeding 25 knots (12.86 m/s) are expected to persist in most parts of the County.

*Community members advised to inculcate the culture of being “weather – ready”, “climate – smart” and “water – wise” as we navigate the unfamiliar and chaotic environment of a changing climate. This will help them adapt to a changing climate while at the same time mitigating the adverse effects of Climate Change and Variability, hence becoming more resilient to the vagaries of Climate Change.*

In light of this weather forecast, farmers are also advised to consult with respective local extension officers from the County Ministry of Agriculture and Livestock at Ward and Sub-county level for more advice on the best farm practices.

#### KEY OF SCIENTIFIC WORDS USED

Rainfall categories	
Range	Category
<5 mm	Light
5 - 20mm	Moderate
20 - 50mm	Heavy
>50mm	Very heavy
Rainfall coverage	
Term	Meaning
Most Places	Between 66% and 100%
Several Places	Between 33% and 66%
Few Places	Below 33%
<b>Note: 1 mm of rainfall is equivalent to 1 litre of rainfall per square meter.</b>	

**For further information, please contact:**

A handwritten signature in blue ink on a light-colored background. The signature appears to be 'Daniel M. Mbithi' written in a cursive, stylized script.

Daniel M. Mbithi

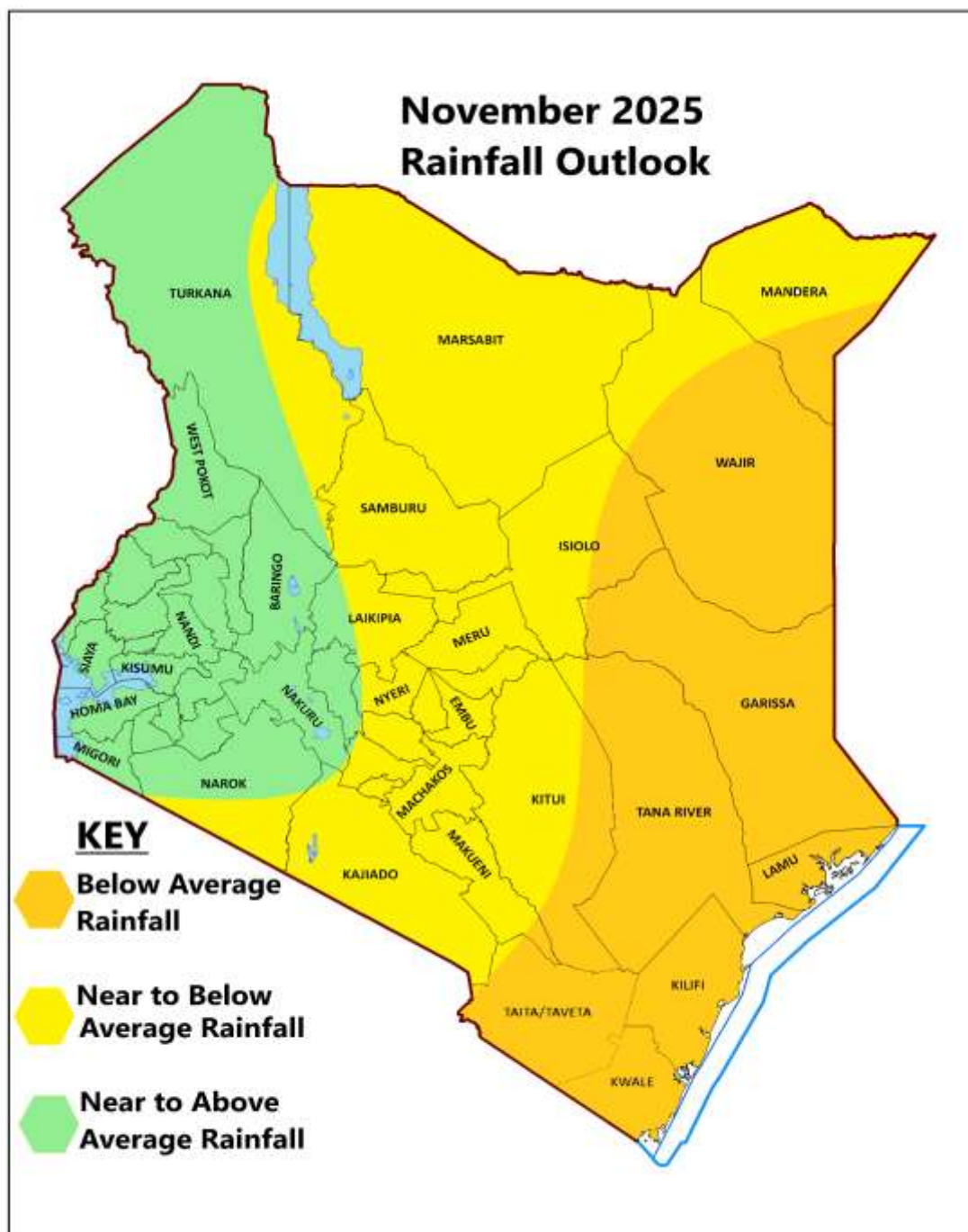
County Director of Meteorological Services

Mobile: 0715255171

Email: [mbithi\\_d@yahoo.com](mailto:mbithi_d@yahoo.com)

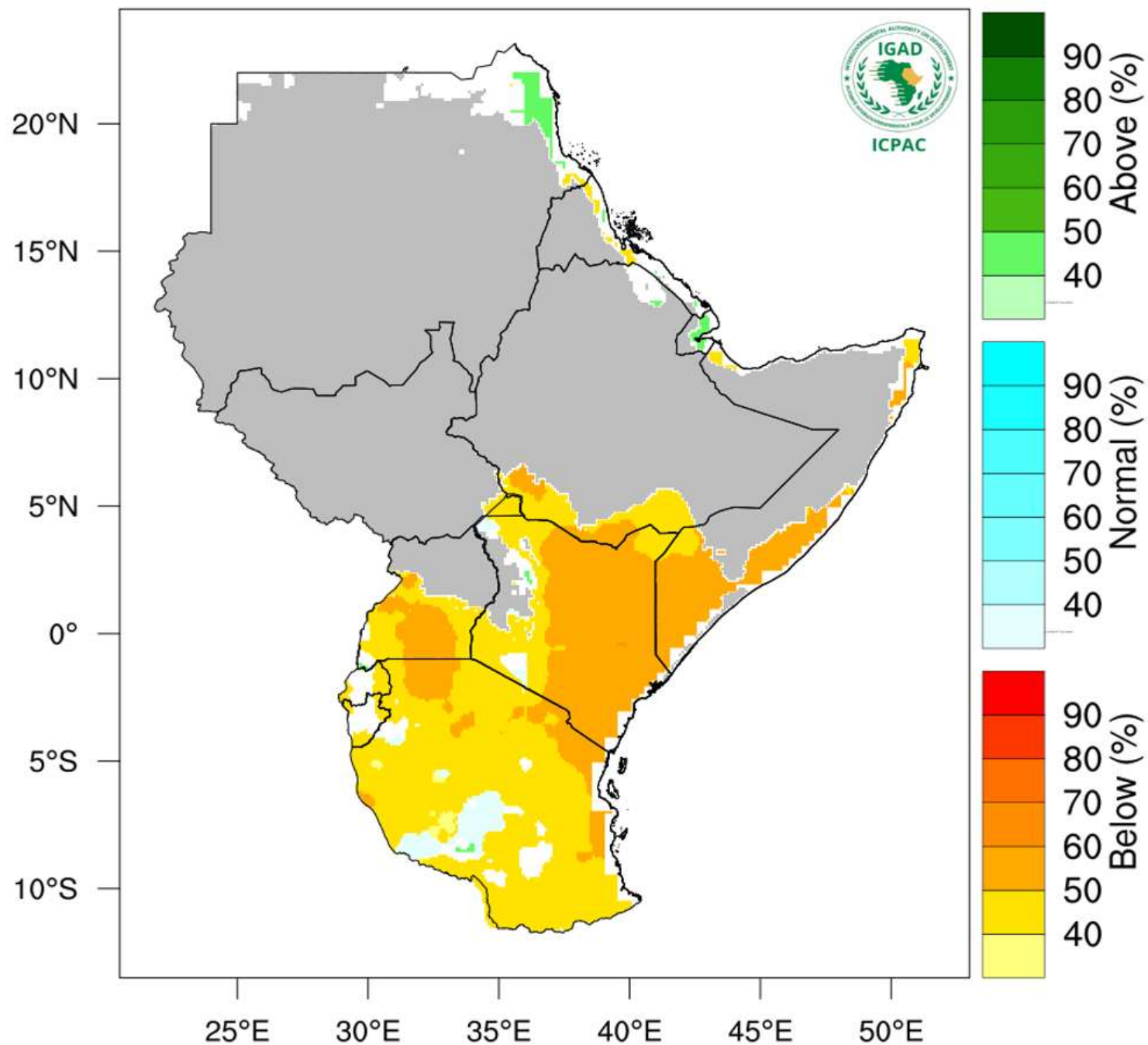
**You can find more information about the climate and weather in Kenya on the KMD website <http://www.meteo.go.ke/>**

## Annex I: Rainfall forecast for the month of November 2025



NB: Near to Below Average Rainfall expected over most places during the month of November 2025 in the County

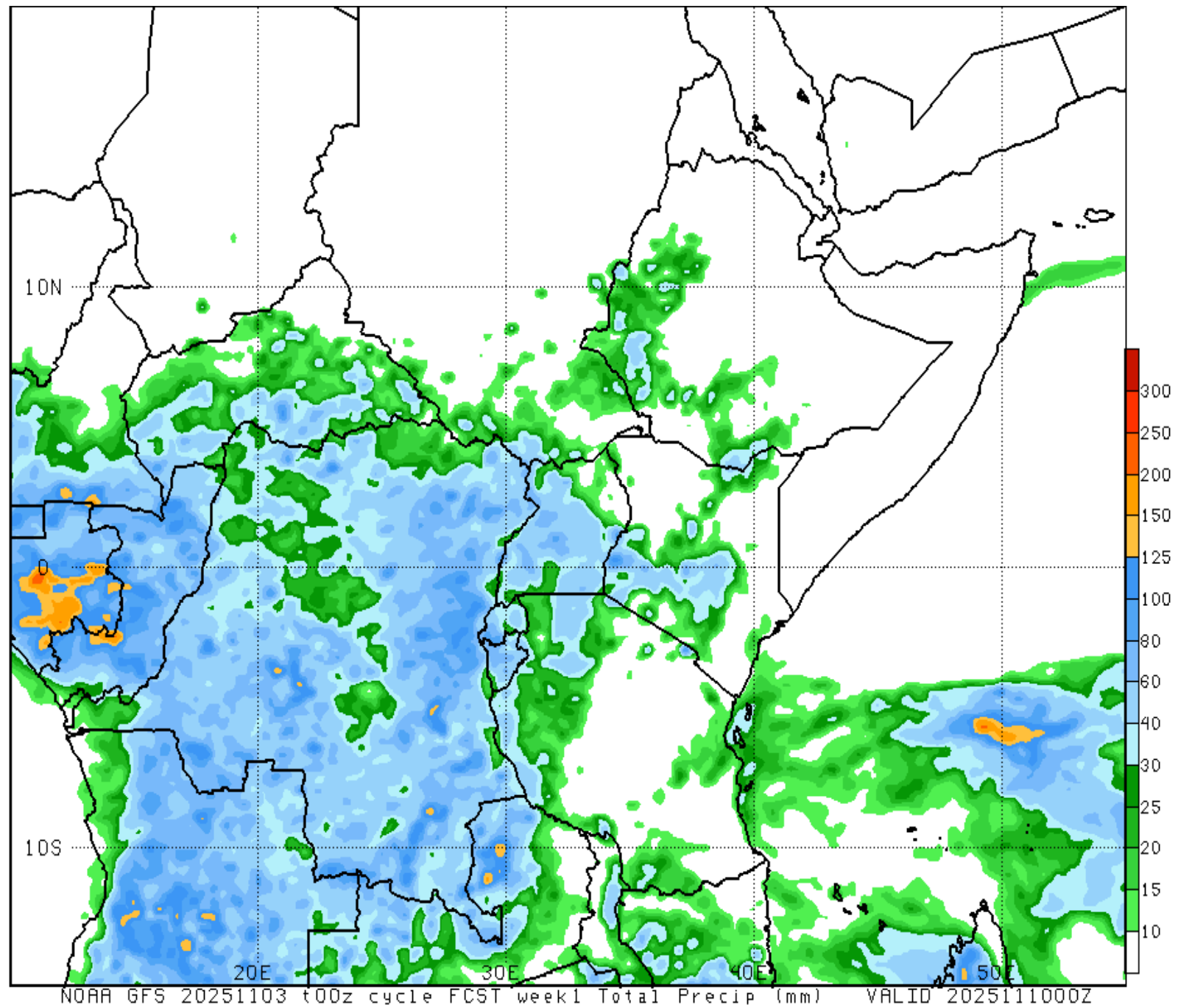
## Rainfall Forecast for Nov 2025 – Jan 2026



NB: Drier than usual conditions expected over most places during the months of November & December 2025 and January 2026 in the County



### Annex III: Seven days' rainfall forecast up to 11<sup>th</sup> November, 2025



*NB: Near normal conditions expected over most parts of the County between 3<sup>rd</sup> to 11<sup>th</sup> November, 2025*



## Annex V: Wards Map of Kitui County

