



**REPUBLIC OF KENYA**  
**MINISTRY OF ENVIRONMENT, CLIMATE CHANGE AND FORESTRY**  
**KENYA METEOROLOGICAL DEPARTMENT**

**COUNTY METEOROLOGICAL SERVICES, LAIKIPIA COUNTY**  
**P.O. BOX 192, 10400 NANYUKI**

**e-mail:** [kmdcdmlaikipia@gmail.com](mailto:kmdcdmlaikipia@gmail.com), **CDMS:** Njiru David: **Tel.** 0721218207

**For further information, please contact: Director KMD**

**Tel:** +254724255153/4

**e-mail:** [director@meteo.go.ke](mailto:director@meteo.go.ke), [info@meteo.go.ke](mailto:info@meteo.go.ke) **Website:** <http://www.meteo.go.ke>

**Ref:** MET/Laikipia County/12/25

**Date of issue;** 01 December, 2025

**WEATHER FORECAST FOR THE NEXT SEVEN DAYS VALID 02 – 08 Dec, 2025**

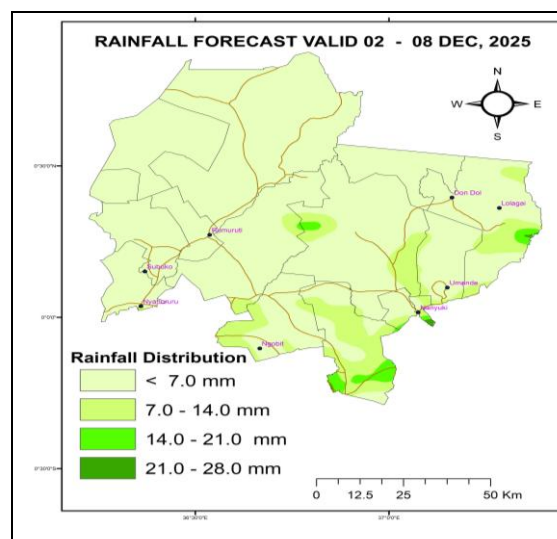
**Forecast for the next Seven days (02 – 08 December, 2025) indicates;**

- Mainly sunny and dry conditions expected over most places.
- Afternoon showers and thunderstorms are likely over a few places in Laikipia Central and East
- The Maximum temperatures expected to range between 20 – 28°C and the (Minimum) temperatures to range 06 – 16°C

**Review of weather for the last seven-days (25 Nov – 01 Dec, 2025)**

- Stations that recorded Light to Heavy amounts of rainfall includes Ol Pejeta, Ngobit, Lamuria, Kinamba, Tigithi etc
- *In the last two weeks the precipitation amounts increased over Few places*
- Both the day time (Max) temperatures and the Night time (Min) temperatures stabilized

**Expected Rainfall Distribution for the Next Seven Days 02 - 08 Dec, 2025)**



Mainly sunny intervals are expected over most places.

Between 5 – 28mm of the cumulated weekly rainfall is predicted as indicated on the adjacent rainfall forecast map

Much of the predicted rains are likely in the second half of the forecasting period.

### Detailed Weather Forecast for the Next Seven Days Valid 02 - 08 Dec, 2025

REGION	TIME	TUESDAY 02/12/2025	WEDNESDAY 03/12/2025	THURSDAY 04/12/2025	FRIDAY 05/12/2025	SATURDAY 06/12/2025	SUNDAY 07/12/2025	MONDAY 08/12/2025
LAIKIP IA NORTH	Morning	Cloudy/ Sunny	Cloudy/Sun ny	Cloudy/Su nny	Cloudy/ Sunny	Cloudy/Su nny	Cloudy/ Sunny	Cloudy/S unny
	After noon	Sunny Intervals	Sunny Intervals	Sunny Intervals	Sunny Intervals	Sunny Intervals	Sunny Intervals	Showers over Few Places
	Night	Partly Cloudy	Partly Cloudy	Partly Cloudy	Partly Cloudy	Partly Cloudy	Partly Cloudy	Partly Cloudy
TEMPS	Max/ Min	27/15	28/14	26/12	26/14	25/13	25/14	24/13
LAIKIP IA EAST	Morning	Cloudy/ Sunny	Cloudy/Sun ny	Cloudy/Su nny	Cloudy/ Sunny	Cloudy/Su nny	Cloudy/ Sunny	Cloudy/S unny
	After noon	Sunny Intervals	Showers over Few Places	Showers over Few Places	Showers & TS over Few Places	Showers over Few Places	Sunny Intervals	Showers & TS over Few Places
	Night	Partly Cloudy	Partly Cloudy	Partly Cloudy	Partly Cloudy	Partly Cloudy	Partly Cloudy	Partly Cloudy
TEMPS	Max/ Min	25/10	24/12	25/12	25/10	23/12	24/12	22/11
LAIKIP IA WEST	Morning	Cloudy/ Sunny	Cloudy/Sun ny	Cloudy/Su nny	Cloudy/ Sunny	Cloudy/Su nny	Cloudy/ Sunny	Cloudy
	After noon	Sunny Intervals	Showers over Few Places	Sunny Intervals	Sunny Intervals	Showers over Few Places	Sunny Intervals	Showers over several Places
	Night	Partly/ Cloudy	Partly Cloudy	Partly Cloudy	Partly Cloudy	Partly Cloudy	Partly Cloudy	Partly Cloudy
TEMPS	Max/ Min	25/10	26/11	24/12	24/10	22/09	23/09	20/10

- **TS – Thunderstorms; AWS - Automatic Weather Station**
- Further outlook indicates below average rainfall for the month of December, 2025 compared with the long term mean for December.
- The spatial and temporal distribution of rainfall in the month of December 2025 is expected to be poor.
- The Daily Mean Temperatures are likely to be warmer than average over most places, but reduce in the days with precipitation.

### COMPARING CUMMULATED RAINFALL AMOUNTS FOR THE LAST TWO WEEKS

STATION	18 – 24 Nov, 2025	25 Nov – 01 Dec, 2025
Mutara Orchards (Office Area)	Nil	1.8 mm
Lamuria Met. Stn.	5.0 mm	22.4 mm
Rumuruti	-	-
Muhotetu CC	4.1 mm	4.4 mm
Sipili	6.5 mm	-
Ngárua (Kinamba – AWS)	7.8 mm	4.9 mm
OI Mysor Sosian	6.5 mm	Nil
Mugie Conservancy (Centre)	Nil	Nil
Nanyuki MET. Station	Nil	1.0 mm
Kimanjo Pri. Sch AWS	0.1 mm	Nil
Survey Sec. Sch. AWS	0.5 mm	0.2 mm
Lokusero Sec. Sch. AWS	9.1 mm	0.9 mm
Dol Dol Boys Sch. (AWS)	0.5 mm	0.1 mm
Ngobit Police Stn. AWS	2.8 mm	18.9 mm
<b>Lol-Daiga Stations</b>		
1). Barrier	Nil	Nil
2). Central	Nil	Nil
3). Northern	Nil	Nil
<b>OI Pejeta Rainfall Stations</b>		
1). Kamock	5.0 mm	71.0 mm
2). OPC HQ site	Nil	8.0 mm
3). Golf 3	Nil	6.0 mm
4). Oscar 2 - 5	0.5 mm	22.0 mm
5). Research	15.0 mm	8.5 mm
6). Sirima	15.0 mm	60.0 mm
7). Mutara (Zulu 3)	Nil	16.0 mm
<b>OI Jogi Conservancy Rainfall Stations</b>		
1). Main House	Nil	Nil
2). Marula	Nil	Nil
<b>Borana Conservancy Rainfall Stations</b>		
1). Headquarters	Nil	Nil
2). Waitabit	Nil	Nil

KEY SCIENTIFIC TERMS USED IN THE FORECAST			
RAINFALL CATEGORIES		RAINFALL COVERAGE	
< 5 mm	Light	<b>TERMs</b>	<b>MEANING</b>
5 – 20 mm	Moderate	Most places	Between 67% and 100%
20 – 50 mm	Heavy	Several Places	Between 33% and 67%
> 50 mm	Very heavy	Few places	Below 33%

**Note;** *It's important to follow up this weekly forecast with the 24hr forecast issued daily by the Kenya Meteorological Department.*