



**REPUBLIC OF KENYA**  
**MINISTRY OF ENVIRONMENT, CLIMATE CHANGE AND FORESTRY**  
**KENYA METEOROLOGICAL DEPARTMENT**

**COUNTY METEOROLOGICAL SERVICES, LAIKIPIA COUNTY**  
**P.O. BOX 192, 10400 NANYUKI**

**e-mail:** [kmdcdmlaikipia@gmail.com](mailto:kmdcdmlaikipia@gmail.com), **CDMS:** Njiru David: **Tel.** 0721218207

**For further information, please contact: Director KMD**

**Tel:** +254724255153/4

**e-mail:** [director@meteo.go.ke](mailto:director@meteo.go.ke), [info@meteo.go.ke](mailto:info@meteo.go.ke) **Website:** <http://www.meteo.go.ke>

**Ref:** MET/Laikipia County/12/25

**Date of issue;** 08 December, 2025

**WEATHER FORECAST FOR THE NEXT SEVEN DAYS VALID 09 - 15 Dec, 2025**

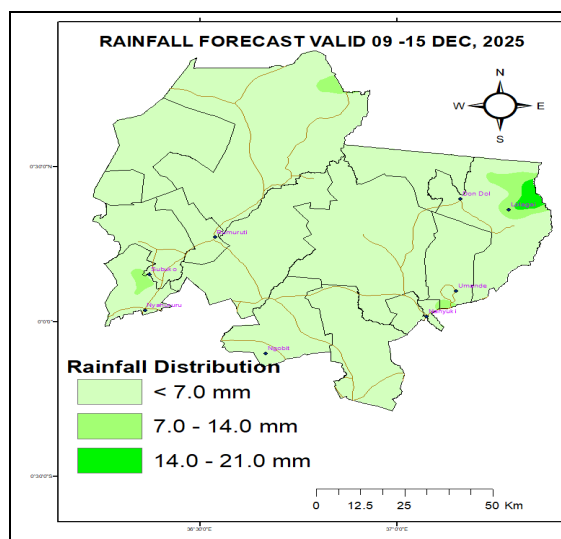
**Forecast for the next Seven days (09 - 15 December, 2025) indicates;**

- Mainly sunny and dry conditions expected over most places.
- Afternoon showers and thunderstorms are likely over a few places mainly over Laikipia East
- The Maximum temperatures expected to range between 20 – 28°C and the (Minimum) temperatures to range 06 - 16°C

**Review of weather for the last seven-days (02 - 08 Dec, 2025)**

- Stations that recorded Light to Heavy amounts of rainfall includes Ol Pejeta, Ngobit, Tigithi etc
- *In the last two weeks the precipitation amounts increased over Few places*
- Both the day time (Max) temperatures and the Night time (Min) temperatures stabilized

**Expected Rainfall Distribution for the Next Seven Days 09 - 15 Dec, 2025)**



Mainly sunny intervals are expected over most places.

Between 5 – 21mm of the cumulated weekly rainfall is predicted as indicated on the adjacent rainfall forecast map

Much of the predicted rains are likely in the second half of the forecasting period.

**Detailed Weather Forecast for the Next Seven Days Valid 09 - 15 Dec, 2025**

REGION	TIME	TUESDAY 09/12/2025	WEDNESDAY 10/12/2025	THURSDAY 11/12/2025	FRIDAY 12/12/2025	SATURDAY 13/12/2025	SUNDAY 14/12/2025	MONDAY 15/12/2025
<b>LAIKIP IA NORTH</b>	Morning	Cloudy/ Sunny	Cloudy/Sun ny	Sunny	Sunny	Sunny	Cloudy/ Sunny	Cloudy/S unny
	After noon	Showers over Few Places	Showers over Few Places	Sunny Intervals	Sunny Intervals	Sunny Intervals	Showers over Few Places	Showers over Few Places
	Night	Partly Cloudy	Partly Cloudy	Partly Cloudy	Partly Cloudy	Partly Cloudy	Partly Cloudy	Partly Cloudy
<b>TEMPS</b>	<b>Max/ Min</b>	27/15	28/14	26/12	27/14	27/13	27/14	24/13
<b>LAIKIP IA EAST</b>	Morning	Cloudy/ Sunny	Cloudy/Sun ny	Cloudy/Su nny	Cloudy/ Sunny	Cloudy/Su nny	Cloudy/ Sunny	Cloudy/S unny
	After noon	Showers over Few Places	Showers over Few Places	Showers over Few Places	Showers over Few Places	Showers over Few Places	Showers over Few Place	Showers & TS over Few Places
	Night	Partly Cloudy	Partly Cloudy	Partly Cloudy	Partly Cloudy	Partly Cloudy	Partly Cloudy	Partly Cloudy
<b>TEMPS</b>	<b>Max/ Min</b>	25/10	24/10	25/10	25/10	23/10	24/10	22/09
<b>LAIKIP IA WEST</b>	Morning	Cloudy/ Sunny	Sunny	Sunny	Cloudy/ Sunny	Cloudy/Su nny	Cloudy/ Sunny	Cloudy
	After noon	Showers over Few Places	Showers over Few Places	Sunny Intervals	Sunny Intervals	Showers over Few Places	Showers over Few Places	Showers over several Places
	Night	Partly/ Cloudy	Partly Cloudy	Partly Cloudy	Partly Cloudy	Partly Cloudy	Partly Cloudy	Partly Cloudy
<b>TEMPS</b>	<b>Max/ Min</b>	25/10	26/10	24/09	24/10	22/09	23/09	20/08

- **TS – Thunderstorms; AWS - Automatic Weather Station**
- Further outlook indicates below average rainfall for the month of December, 2025 compared with the long term mean for December.
- The spatial and temporal distribution of rainfall in the month of December 2025 is expected to be poor.
- The Daily Mean Temperatures are likely to be warmer than average over most places, but reduce in the days with precipitation.

### COMPARING CUMMULATED RAINFALL AMOUNTS FOR THE LAST TWO WEEKS

STATION	25 Nov – 01 Dec, 2025	02 – 08 Dec, 2025
Mutara Orchards (Office Area)	1.8 mm	5.0 mm
Lamuria Met. Stn.	22.4 mm	3.0 mm
Rumuruti	-	-
Muhotetu CC	4.4 mm	-
Sipili	-	-
Ngárua (Kinamba – AWS)	4.9 mm	0.6 mm
OI Mysor Sosian	Nil	-
Mugie Conservancy (Centre)	Nil	Nil
Nanyuki MET. Station	1.0 mm	8.1 mm
Kimanjo Pri. Sch AWS	Nil	1.1 mm
Survey Sec. Sch. AWS	0.2 mm	0.2 mm
Lokusero Sec. Sch. AWS	0.9 mm	3.0 mm
Dol Dol Boys Sch. (AWS)	0.1 mm	4.0 mm
Ngobit Police Stn. AWS	18.9 mm	13.2 mm
<b>Lol-Daiga Stations</b>		
1). Barrier	Nil	Nil
2). Central	Nil	Nil
3). Northern	Nil	Nil
<b>OI Pejeta Rainfall Stations</b>		
1). Kamock	71.0 mm	77.0 mm
2). OPC HQ site	8.0 mm	40.0 mm
3). Golf 3	6.0 mm	15.0 mm
4). Oscar 2 - 5	22.0 mm	27.5 mm
5). Research	8.5 mm	43.0 mm
6). Sirima	60.0 mm	0.5 mm
7). Mutara (Zulu 3)	16.0 mm	14.5 mm
<b>OI Jogi Conservancy Rainfall Stations</b>		
1). Main House	Nil	Nil
2). Marula	Nil	2.5 mm
<b>Borana Conservancy Rainfall Stations</b>		
1). Headquarters	Nil	Nil
2). Waitabit	Nil	Nil

KEY SCIENTIFIC TERMS USED IN THE FORECAST			
RAINFALL CATEGORIES		RAINFALL COVERAGE	
< 5 mm	Light	<b>TERMs</b>	<b>MEANING</b>
5 – 20 mm	Moderate	Most places	Between 67% and 100%
20 – 50 mm	Heavy	Several Places	Between 33% and 67%
> 50 mm	Very heavy	Few places	Below 33%

**Note;** *It's important to follow up this weekly forecast with the 24hr forecast issued daily by the Kenya Meteorological Department.*