



KENYA  
METEOROLOGICAL  
DEPARTMENT

*For further info:*

*Contact: Daniel M. Mbithi*

*Mobile No. 0715255171*

*Email: mbithi\_d@yahoo.com*

County Director of Meteorological Services Kitui County

## Weekly Weather forecast for Kitui County

### 1.1 PART I: WEEKLY FORECAST FOR THE PERIOD 16<sup>th</sup> to 22<sup>nd</sup> December 2025 Weather forecast Table

Sub County	Ward	Probable Total weekly amount (mm)	Probable weather Notes: Light rains <1-5 mm; Moderate rains 5-20 mm; Heavy rains 20-50 mm; Very heavy rains >50 mm							Winds (km/h kilometers per hour)	Temp (Tmax °C & Tmin °C)
			Tue	Wed	Thur	Fri	Sat	Sun	Mon	Weekly	Weekly
Mwingi West	Nguutani	>10 mm	Sunny & Dry	Rain	Rain	Rain	Rain	Rain	Rain	Easterly 18.0 km/h	Max 24-29 °C Min 17-20 °C
	Kyome/Thaana	>10 mm	Sunny & Dry	Rain	Rain	Rain	Rain	Rain	Rain		
	Kiomo/Kyethani	>10 mm	Sunny & Dry	Rain	Rain	Rain	Rain	Rain	Rain		
	Migwani	>10 mm	Sunny & Dry	Rain	Rain	Rain	Rain	Rain	Rain		
Mwingi North	Ngomeni	>10 mm	Sunny & Dry	Rain	Rain	Rain	Rain	Rain	Rain	Easterly 18.0 km/h	Max 27-33 °C Min 19-22 °C
	Kyuso	>10 mm	Sunny & Dry	Rain	Rain	Rain	Rain	Rain	Rain		
	Tseikuru	>10 mm	Sunny & Dry	Rain	Rain	Rain	Rain	Rain	Rain		
	Tharaka	>10 mm	Sunny & Dry	Rain	Rain	Rain	Rain	Rain	Rain		
	Mumoni	>10 mm	Sunny & Dry	Rain	Rain	Rain	Rain	Rain	Rain		
Mwingi Central	Central	>10 mm	Sunny & Dry	Rain	Rain	Rain	Rain	Rain	Rain	Easterly 14.4 km/h	
	Kivou	>10 mm	Sunny & Dry	Rain	Rain	Rain	Rain	Rain	Rain		
	Mui	>10 mm	Sunny & Dry	Rain	Rain	Rain	Rain	Rain	Rain		

Sub County	Ward	Probable Total weekly amount (mm)	<b>Probable weather</b> <b>Notes:</b> Light rains <1-5 mm; Moderate rains 5-20 mm; Heavy rains 20-50 mm; Very heavy rains >50 mm							Winds (km/h kilometers per hour)	Temp (Tmax °C & Tmin °C)
			Tue	Wed	Thur	Fri	Sat	Sun	Mon	Weekly	Weekly
Sub County	Waita	>10 mm	Sunny & Dry	Rain	Rain	Rain	Rain	Rain	Rain		Max 26-32 °C Min 18-21 °C
	Nuu	>10 mm	Sunny & Dry	Rain	Rain	Rain	Rain	Rain	Rain		
	Nguni	>10 mm	Sunny & Dry	Rain	Rain	Rain	Rain	Rain	Rain		
Kitui South	Ikanga/Kyatune	>10 mm	Sunny & Dry	Rain	Rain	Rain	Rain	Rain	Rain	Easterly 18.0 km/h	Max 28-31 °C Min 20-21 °C
	Mutomo/Kibwea	>10 mm	Sunny & Dry	Rain	Rain	Rain	Rain	Rain	Rain		
	Kanziko/Simisi	>10 mm	Sunny & Dry	Rain	Rain	Rain	Rain	Rain	Rain		
	Mutha	>10 mm	Sunny & Dry	Rain	Rain	Rain	Rain	Rain	Rain		
	Ikutha	>10 mm	Sunny & Dry	Rain	Rain	Rain	Rain	Rain	Rain		
	Athi	>10 mm	Sunny & Dry	Rain	Rain	Rain	Rain	Rain	Rain		
Kitui East	Chuluni	>10 mm	Sunny & Dry	Rain	Rain	Rain	Rain	Rain	Rain	Easterly 18.0 km/h	Max 25-31 °C Min 18-21 °C
	Nzambani	>10 mm	Sunny & Dry	Rain	Rain	Rain	Rain	Rain	Rain		
	Mutito/Kaliku	>10 mm	Sunny & Dry	Rain	Rain	Rain	Rain	Rain	Rain		
	Zombe/Mwitika	>10 mm	Sunny & Dry	Rain	Rain	Rain	Rain	Rain	Rain		
	Voo/Kyamatu	>10 mm	Sunny & Dry	Rain	Rain	Rain	Rain	Rain	Rain		
	Endau/Malalani	>10 mm	Sunny & Dry	Rain	Rain	Rain	Rain	Rain	Rain		
Kitui Rural	Mbitini	>10 mm	Sunny & Dry	Rain	Rain	Rain	Rain	Rain	Rain	Easterly 18.0 km/h	Max 25-29 °C Min 17-19 °C
	Kisasi	>10 mm	Sunny & Dry	Rain	Rain	Rain	Rain	Rain	Rain		
	Kyangi	>10 mm	Sunny & Dry	Rain	Rain	Rain	Rain	Rain	Rain		
	Yatta/Kwa Vonza	>10 mm	Sunny & Dry	Rain	Rain	Rain	Rain	Rain	Rain		
Kitui West	Kauwi	>10 mm	Sunny & Dry	Rain	Rain	Rain	Rain	Rain	Rain	Easterly 18.0 km/h	Max 23-29 °C Min 16-19 °C
	Mutonguni	>10 mm	Sunny & Dry	Rain	Rain	Rain	Rain	Rain	Rain		
	Matinyani	>10 mm	Sunny & Dry	Rain	Rain	Rain	Rain	Rain	Rain		
	<10 mm	>10 mm	Sunny & Dry	Rain	Rain	Rain	Rain	Rain	Rain		
Kitui Central	Kyangwithya East	>10 mm	Sunny & Dry	Rain	Rain	Rain	Rain	Rain	Rain		
	Kyangwithya West	>10 mm	Sunny & Dry	Rain	Rain	Rain	Rain	Rain	Rain		

Sub County	Ward	Probable Total weekly amount (mm)	Probable weather Notes: Light rains <1-5 mm; Moderate rains 5-20 mm; Heavy rains 20-50 mm; Very heavy rains >50 mm							Winds (km/h kilometers per hour)	Temp (Tmax °C & Tmin °C)
			Tue	Wed	Thur	Fri	Sat	Sun	Mon	Weekly	Weekly
	Township	>10 mm	<i>Sunny &amp; Dry</i>	<i>Rain</i>	<i>Rain</i>	<i>Rain</i>	<i>Rain</i>	<i>Rain</i>	<i>Rain</i>	Easterly 18.0 km/h	Max 26-29 °C Min 17-20 °C
	Mulango	>10 mm	<i>Sunny &amp; Dry</i>	<i>Rain</i>	<i>Rain</i>	<i>Rain</i>	<i>Rain</i>	<i>Rain</i>	<i>Rain</i>		
	Miambani	>10 mm	<i>Sunny &amp; Dry</i>	<i>Rain</i>	<i>Rain</i>	<i>Rain</i>	<i>Rain</i>	<i>Rain</i>	<i>Rain</i>		

## 1.2 The Rainfall Forecast for December 2025

December typically marks the end of the October–November–December (OND) “short rains” season in Kitui County. The forecast for December indicates that most parts of the County are likely to experience near-average to below-average (generally depressed) rainfall, while few parts of the County are likely to receive below-average (highly depressed) rainfall. This situation is likely to exacerbate the ongoing dry conditions being witnessed across the entire County, driven by the markedly depressed rainfall observed in November.

The rainfall distribution, both in time and space, is expected to be generally poor with prolonged dry spells. However, episodes of heavy rainfall are still likely to occur in some parts of the County during this period. For instance, several places in the County are likely to receive significant rainfall at the beginning of the month. The OND 2025 seasonal rainfall is expected to cease between the third and fourth weeks of December across the County.

Temperatures are expected to be warmer than average over the whole County, with prolonged periods of heat likely to intensify daytime temperatures, elevate nighttime minimums, and contribute to generally hotter-than-usual conditions throughout the month.

## 1.3 The Outlook for December 2025 to February 2026

The outlook for the next three months indicates that most parts of the County will be generally sunny and dry in January and February, with occasional rainfall expected primarily in December in the County. In addition to that, some areas in the County, may experience a few rainy days in January and February. Temperatures are expected to be warmer than average across the entire country.

## 1.4 Rainfall Review for November 2025

November 2025, typically the peak of the OND short rains, was unusually dry across much of the County. Most of the observation stations reported deficits ranging from below-average to severely depressed levels, highlighting the pronounced rainfall suppression across the County. Moderately depressed conditions occurred in some parts of Kitui South, Kitui Central, and Kitui Rural, with rainfall decreasing further across Kitui West. Much lower percentages were observed in Mwingi West and Mwingi Central. The most severe deficits occurred Mwingi North and Kitui East, with most stations receiving little or no rainfall at all. Although a few highland stations such as Kabaru. In general, most of the County experienced moderate to extremely dry conditions throughout the month.

## 1.5 Expected Onset, Cessation and Distribution Dates

The predicted onsets, cessations, and distribution of rainfall were derived from dynamical models and statistical analysis of past years. The analogue year selected was 2021, which exhibited characteristics similar to those expected in 2025. The rainfall outcomes from this analogue year are provided for reference only and should not be interpreted as part of the forecast; rather, they illustrate the range of possible outcomes under broadly similar global climate conditions.

## 1.6 State of The Global Climate Drivers

This climate outlook for December 2025 is mainly based on the prevailing and expected Sea Surface Temperature Anomalies (SSTAs) over the Pacific, Indian Ocean and Atlantic Ocean. La Niña is currently underway, with cooler-than-normal ocean temperatures across the Central and East-Central Pacific and matching atmospheric patterns over the tropical Pacific. These conditions are expected to continue through December 2025 to February 2026. A transition back to ENSO-neutral conditions is most likely between January and March 2026, with a 61% chance of occurring during this period. La Niña typically brings drier-than normal conditions to most of the County, though its impact can vary. The negative Indian Ocean Dipole (IOD) is still active, but it has been getting weaker over the past three weeks. For the week ending 23 November, the IOD index was -0.60 °C. Climate models indicate that the IOD is likely to return to neutral conditions in December.

## 1.7 PART II: FURTHER ADVISORIES

### **SUMMARY ABOUT THE WEEKLY FORECAST:**

Cloudy morning with light rains breaking into sunny intervals. Afternoon and night showers over several places throughout the forecast period. Maximum temperatures are expected to range from 23°C - 33°C, while minimum temperatures are expected to range from 16°C - 22°C. Strong southerly to south-easterly winds with speeds not exceeding 25 knots (12.86 m/s) are expected to persist in most parts of the County. **The month of December marks the end of the OND season, and so far, there is NO definite onset that has been realized for OND 2025 season in the County.**

*Community members advised to inculcate the culture of being “weather – ready”, “climate – smart” and “water – wise” as we navigate the unfamiliar and chaotic environment of a changing climate. This will help them adapt to a changing climate while at the same time mitigating the adverse effects of Climate Change and Variability, hence becoming more resilient to the vagaries of Climate Change.*

In light of this weather forecast, farmers are also advised to consult with respective local extension officers from the County Ministry of Agriculture and Livestock at Ward and Sub-county level for more advice on the best farm practices.

**KEY OF SCIENTIFIC WORDS USED**

Rainfall categories	
Range	Category
<5 mm	Light
5 - 20mm	Moderate
20 - 50mm	Heavy
>50mm	Very heavy
Rainfall coverage	
Term	Meaning
Most Places	Between 66% and 100%
Several Places	Between 33% and 66%
Few Places	Below 33%
<b>Note: 1 mm of rainfall is equivalent to 1 litre of rainfall per square meter.</b>	

**For further information, please contact:**



Daniel M. Mbithi

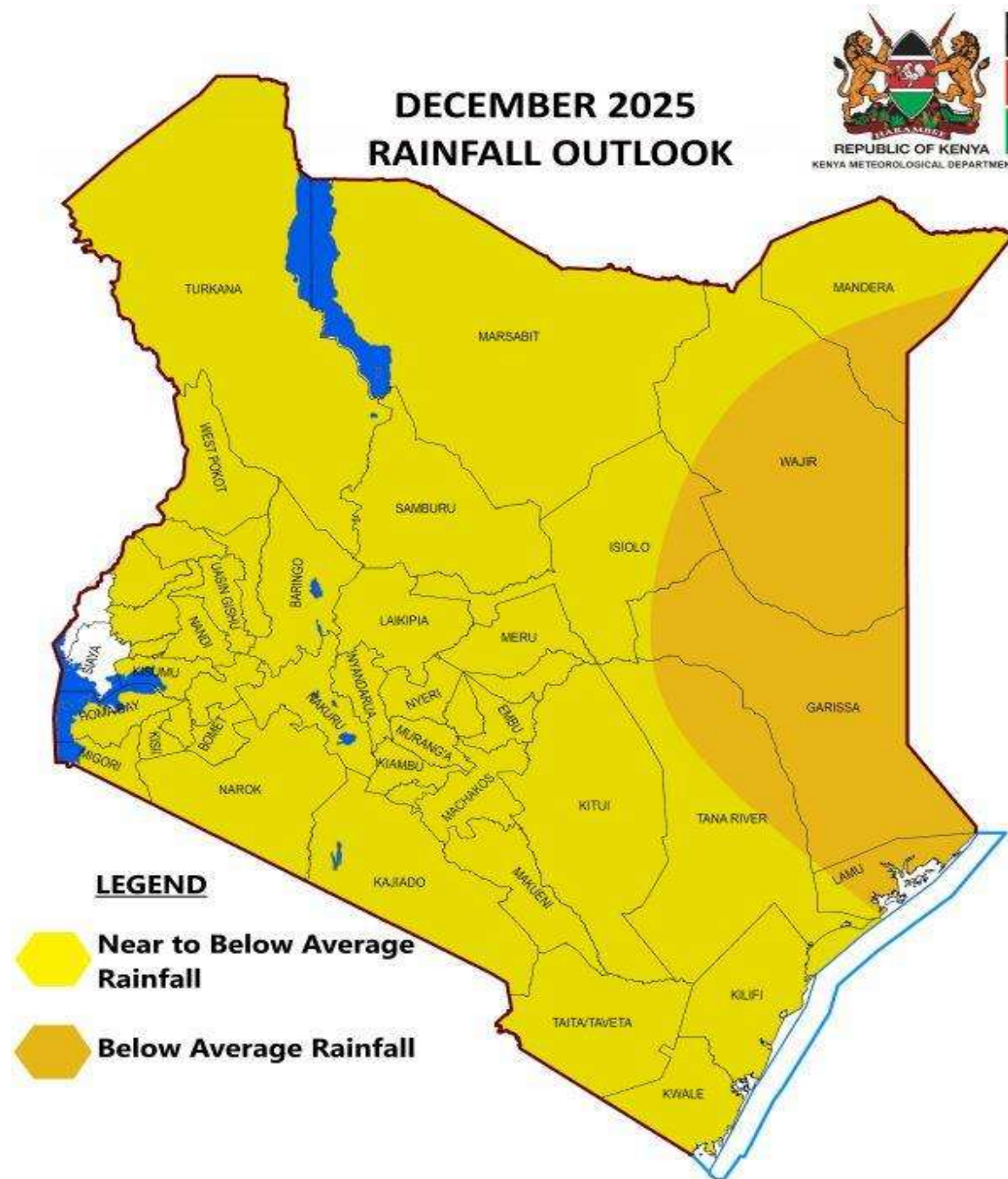
County Director of Meteorological Services

Mobile: 0715255171

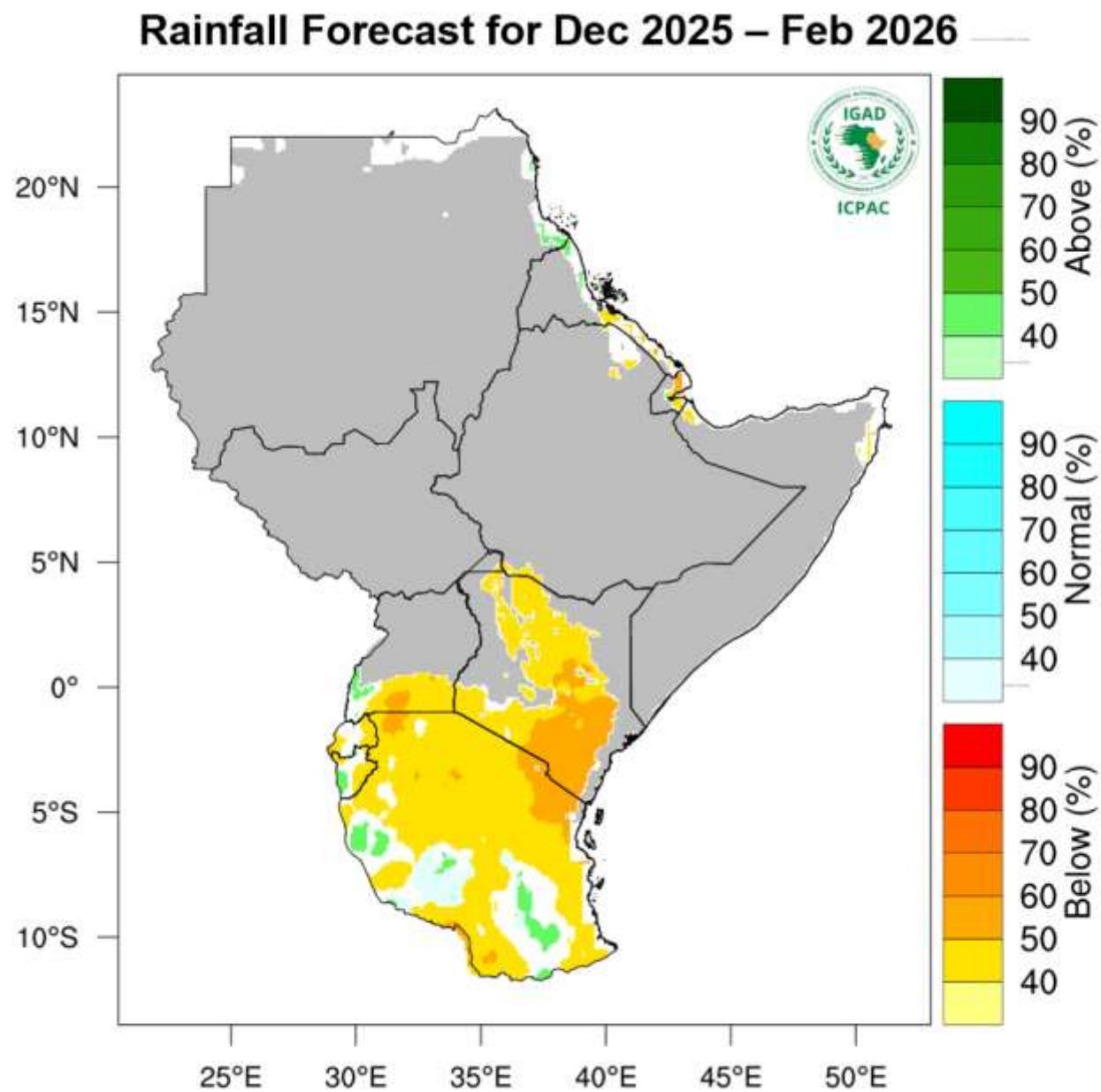
Email: [mbithi\\_d@yahoo.com](mailto:mbithi_d@yahoo.com)

You can find more information about the climate and weather in Kenya on the KMD website <http://www.meteo.go.ke/>

## Annex I: Rainfall forecast for the month of December 2025



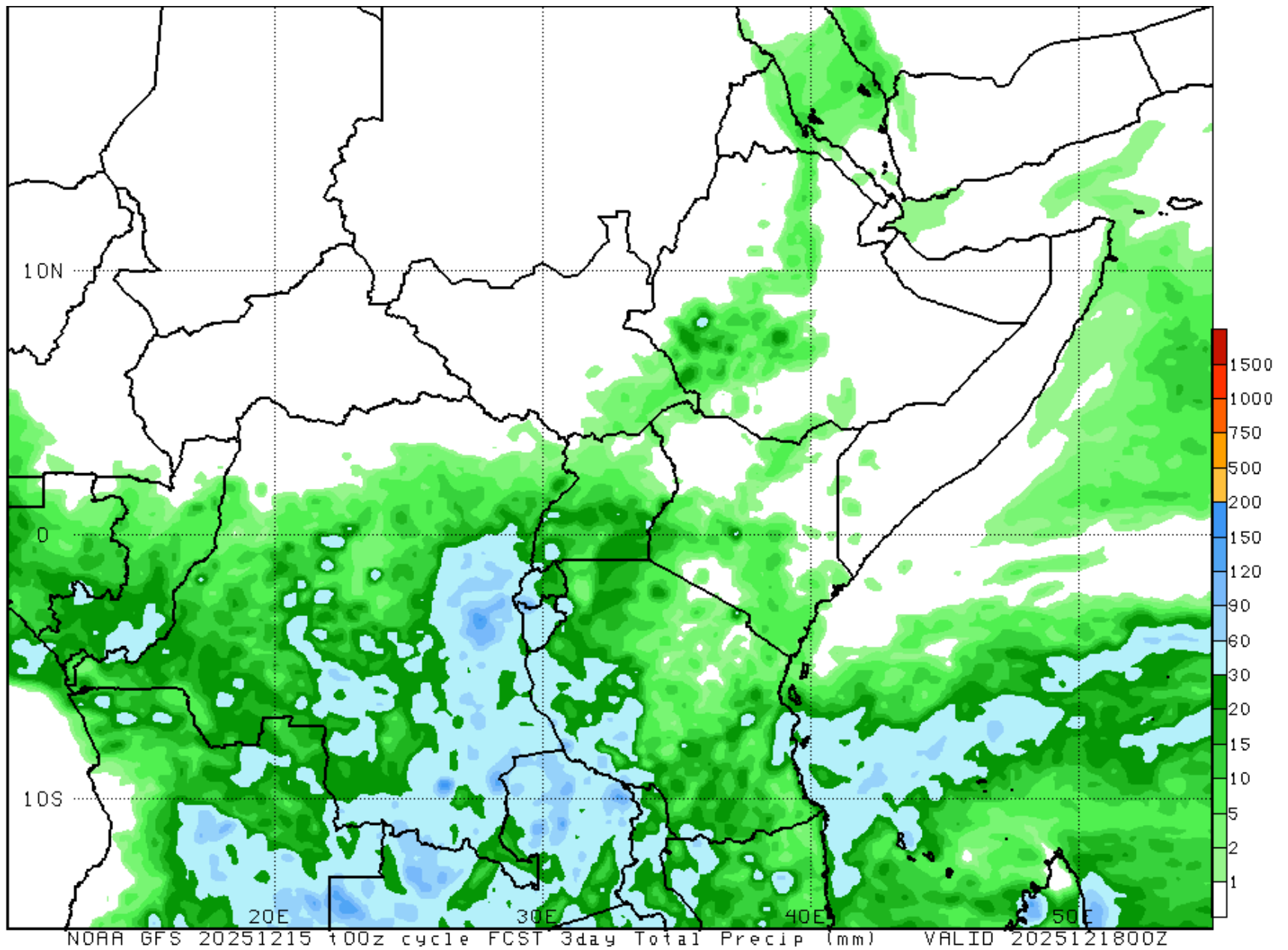
*NB: Near-Average to Below-Average Rainfall expected over most places during the month of December 2025 in the County*



NB: Drier than usual conditions expected over most places during the months of December 2025 and February 2026 in the County



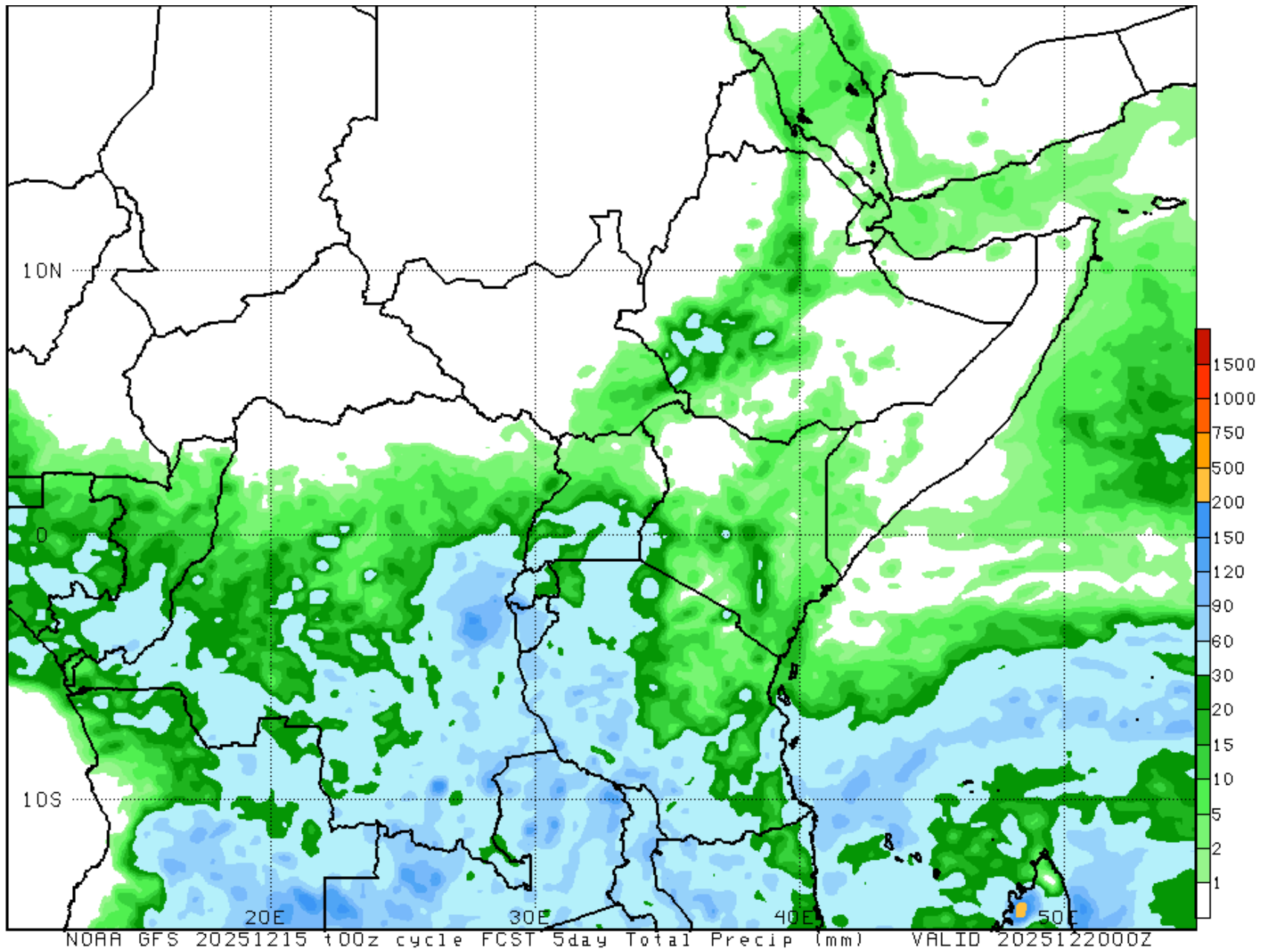
### Annex III: Three days' rainfall forecast up to 18<sup>th</sup> December, 2025



*NB: Near normal conditions expected over most parts of the County between 15<sup>th</sup> to 18<sup>th</sup> December, 2025*

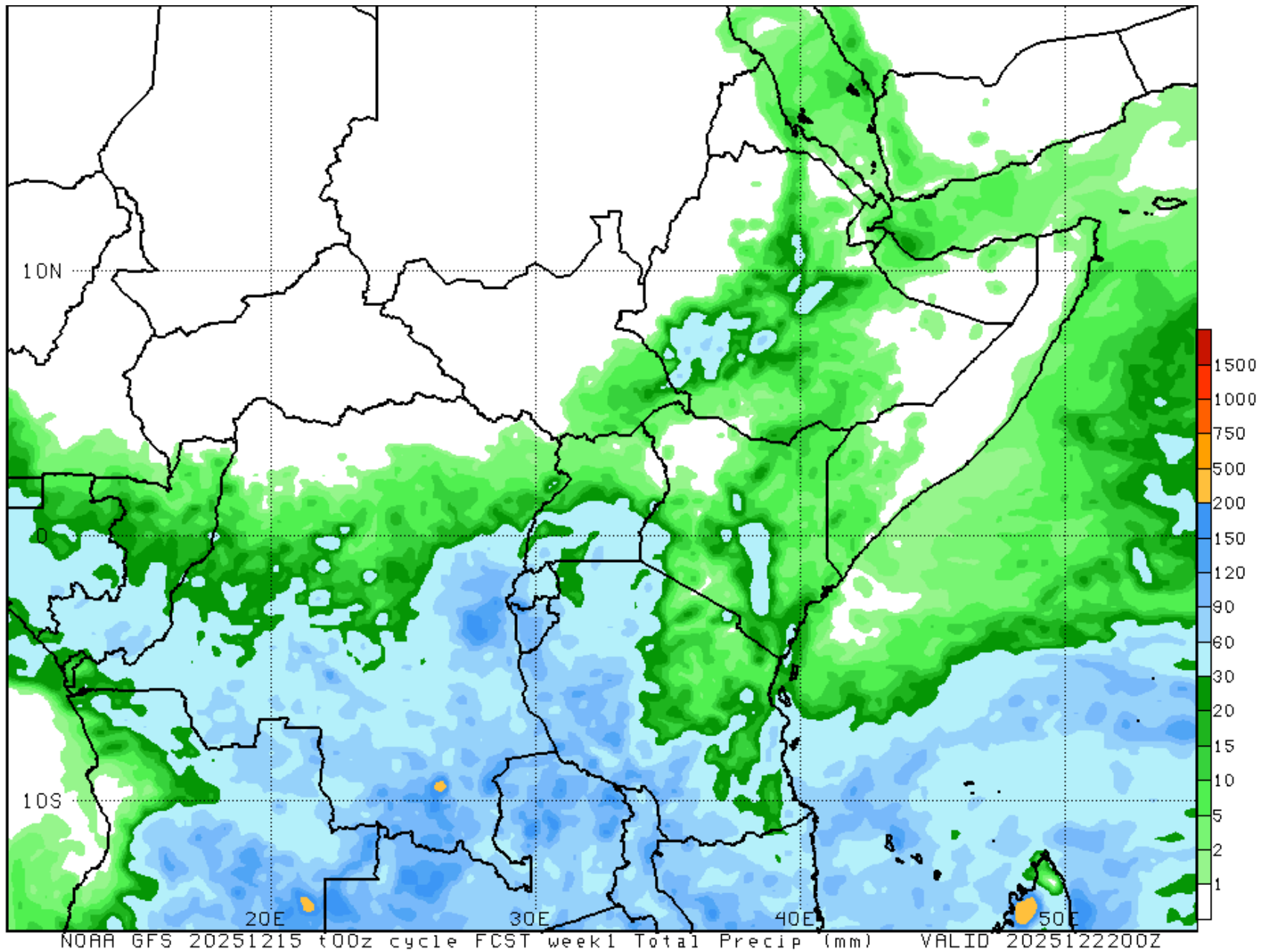


#### Annex IV: Five days' rainfall forecast up to 20<sup>th</sup> December, 2025



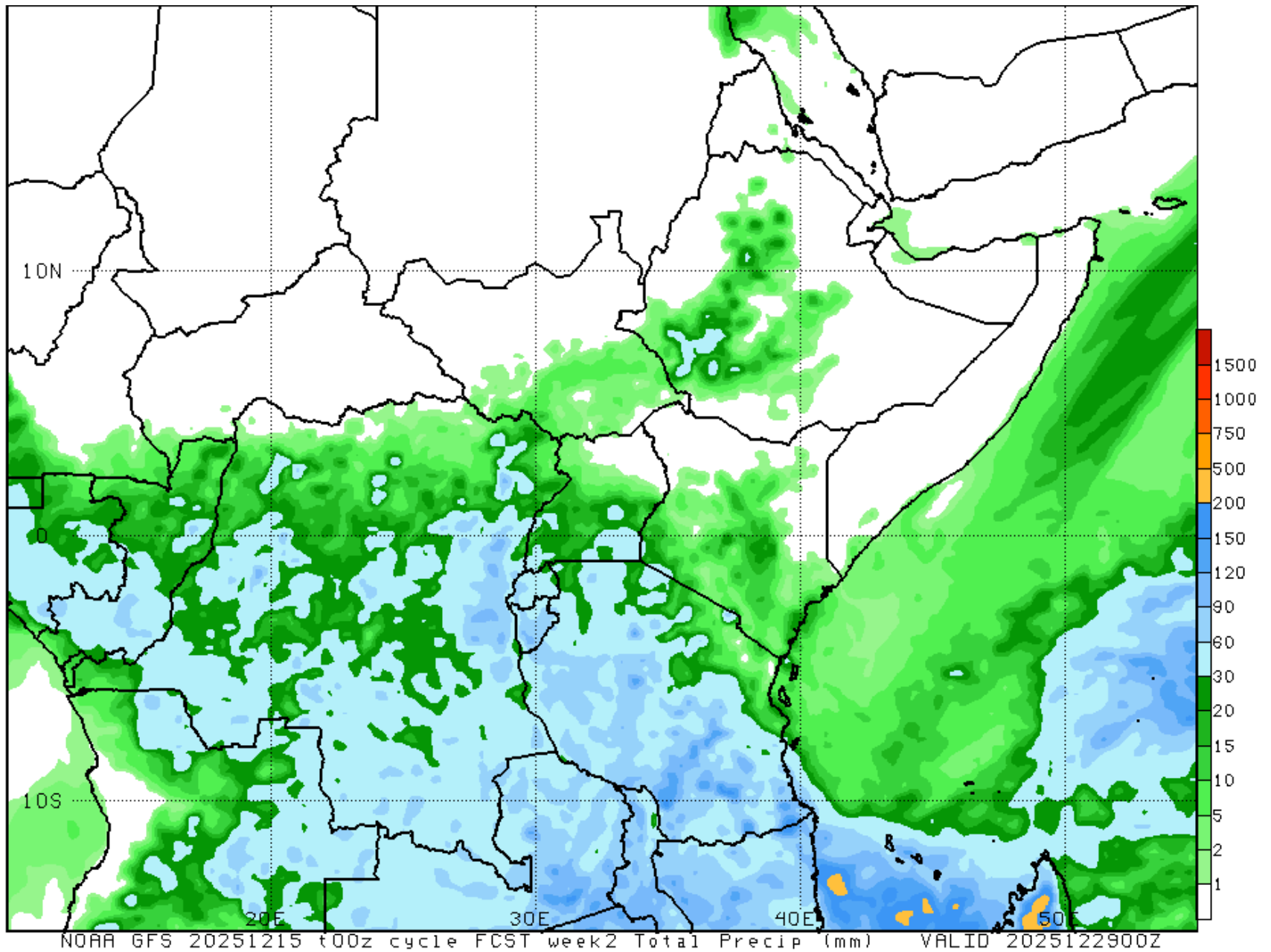
*NB: Near normal conditions expected over most parts of the County between 15<sup>th</sup> to 20<sup>th</sup> December, 2025*

## Annex V: Seven days' rainfall forecast up to 22<sup>nd</sup> December, 2025



*NB: Near normal conditions expected over most parts of the County between 15<sup>th</sup> to 22<sup>nd</sup> December, 2025*

Annex VI: Fourteen days' rainfall forecast up to 29<sup>th</sup> December, 2025



*NB: Near normal conditions expected over most parts of the County between 15<sup>th</sup> to 29<sup>th</sup> December, 2025*

## Annex VII: Wards Map of Kitui County

