

Our Ref: MET/7/341

Date: 15<sup>th</sup> December 2025

## WEEKLY WEATHER FORECAST FOR 16<sup>TH</sup> TO 22<sup>ND</sup> DECEMBER 2025 & REVIEW FOR 8<sup>TH</sup> TO 14<sup>TH</sup> DECEMBER 2025

### SUMMARY

#### Weather Forecast for 16<sup>th</sup> to 22<sup>nd</sup> December 2025

- Rainfall is expected over the Highlands East and West of the Rift Valley, the Rift Valley, Lake Victoria Basin, the Coast, North-eastern and the South-eastern lowlands.
- Daytime (maximum) average temperatures of more than 30°C are expected in the Coast, North-eastern and North-western Kenya as well as over some parts of the South-eastern lowlands, the Rift Valley and the Highlands West of the Rift Valley
- Night-time (minimum) average temperatures are expected to be less than 10°C in some parts of the Highlands East and West of the Rift Valley, the Rift Valley and in the vicinity of Mt. Kilimanjaro

#### Weather Review for 8<sup>th</sup> to 14<sup>th</sup> December 2025

- Rainfall was recorded over several parts of the country.
- Daytime (maximum) temperatures decreased in most stations except a few including Voi, Lamu, Eldoret and Mombasa among others that had an increase.
- Night-time (minimum) temperatures increased over several parts of the country except over a few stations like Wajir, Suba, Nakuru and Lamu that recorded decreases.

### 1 WEATHER FORECAST FOR 16<sup>TH</sup> TO 22<sup>ND</sup> DECEMBER 2025

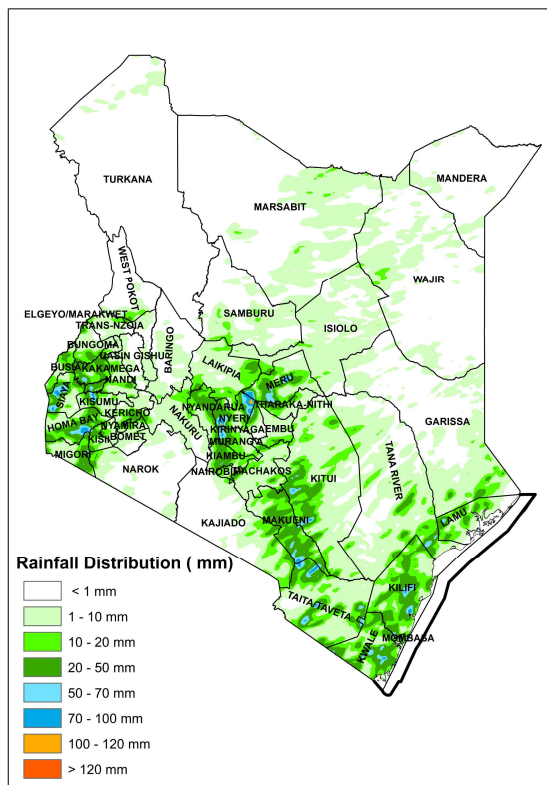
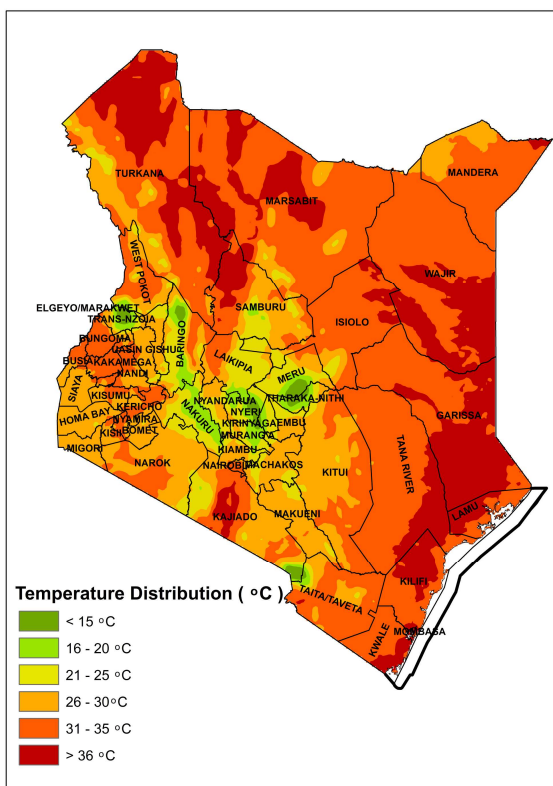


Figure 1: Forecasted Seven-Day Total Rainfall for 16<sup>th</sup> to 22<sup>nd</sup> December 2025

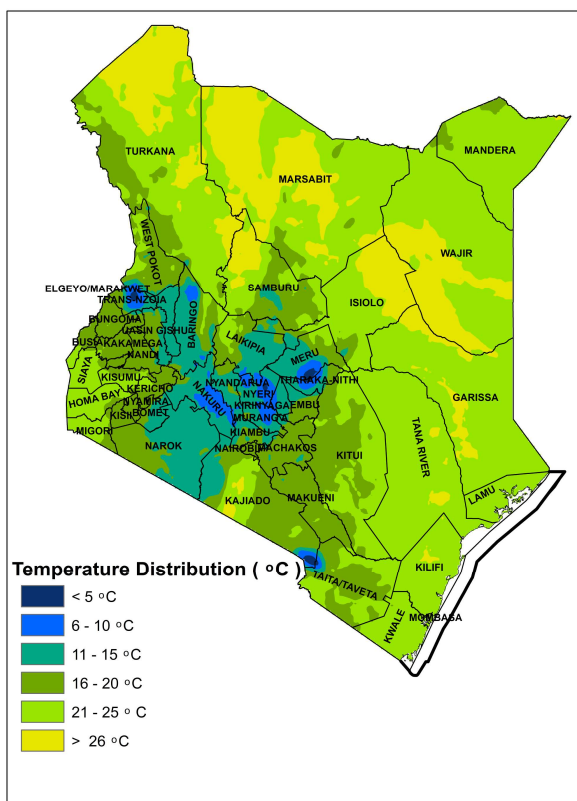
Rainfall is expected over the Highlands East and West of the Rift Valley, the Rift Valley, Lake Victoria Basin, the Coast, North-eastern and the South-eastern lowlands, as depicted in **Figure 1**.

Daytime (maximum) average temperatures of more than 30°C are expected in the Coast, North-eastern and North-western Kenya as well as over some parts of the South-eastern lowlands, the Rift Valley and the Highlands West of the Rift Valley, as shown in **Figure 2**.

Night-time (minimum) average temperatures are expected to be less than 10°C in some parts of the Highlands East and West of the Rift Valley, the Rift Valley and in the vicinity of Mt. Kilimanjaro, as illustrated in **Figure 3**.



**Figure 2: Forecasted Average Maximum Temperatures  
For 16<sup>th</sup> to 22<sup>nd</sup> December 2025**



**Figure 3: Forecasted Average Minimum Temperatures  
for 16<sup>th</sup> to 22<sup>nd</sup> December 2025**

## 1.1 DETAILED REGIONAL RAINFALL FORECAST FOR 16<sup>TH</sup> TO 22<sup>ND</sup> DECEMBER 2025

### 1.1.1 *The Highlands West of the Rift Valley, the Lake Victoria Basin and the Rift Valley (Nandi, Kakamega, Vihiga, Bungoma, Siaya, Busia, Baringo, Nakuru, Trans-Nzoia, Uasin-Gishu, Elgeyo-Marakwet, West-Pokot, Kisii, Nyamira, Kericho, Bomet, Kisumu, Homabay, Migori and Narok Counties):*

Sunny intervals are expected in the mornings, though occasional rain may occur in a few places. Afternoon showers and thunderstorms are expected over a few places, occasionally spreading to several places. Night showers are likely to occur over a few places.

### 1.1.2 *North-western Kenya (Turkana and Samburu Counties):*

Sunny intervals are expected during the day, while nights are likely to be partly cloudy.

However, morning rains, as well as afternoon and nighttime showers and thunderstorms, may occur in a few places.

### 1.1.3 *The Highlands East of the Rift Valley (Nyandarua, Laikipia, Nyeri, Kirinyaga, Murang'a, Kiambu, Meru, Embu, Tharaka-Nithi and Nairobi Counties):*

Mornings are likely to be cloudy with occasional rains over a few places, giving way to sunny intervals. Afternoon showers are likely to occur over a few places. Nights are expected to be partly cloudy, though showers may occur over a few places.

1.1.4 *North-eastern Kenya (Marsabit, Mandera, Wajir, Garissa and Isiolo Counties):*

Sunny intervals are expected during the day, with partly cloudy conditions at night.

However, there is a possibility of morning rains and afternoon showers occurring over a few places.

1.1.5 *The South-eastern lowlands (Machakos, Kitui, Makueni, Kajiado and Taita-Taveta Counties as well as the inland parts of Tana-River County):*

Mornings are likely to be cloudy with occasional rains over a few places, giving way to sunny intervals. Afternoon showers and thunderstorms are expected over a few places, occasionally spreading to several places. Night showers are likely to occur over a few places.

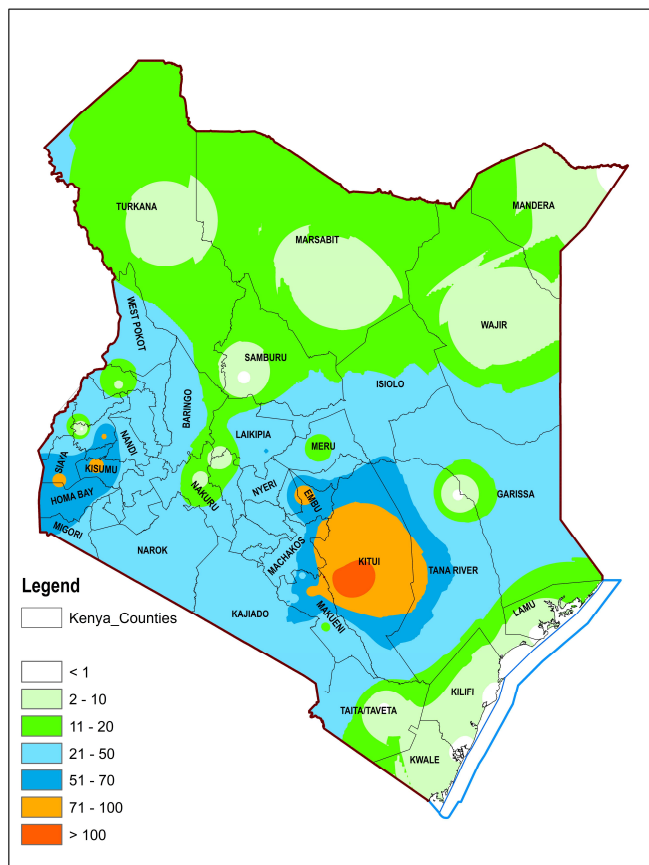
1.1.6 *The Coast (Mombasa, Kilifi, Lamu and Kwale Counties as well as the coastal parts of Tana-River County):*

Sunny intervals are expected during the day, with partly cloudy conditions at night.

However, morning, afternoon and night showers are likely to occur over a few to several places.

## 2 WEATHER REVIEW FOR 8<sup>TH</sup> TO 14<sup>TH</sup> DECEMBER 2025

### 2.1 Rainfall Review



**Figure 4: Observed Seven-Day Total Rainfall for 8<sup>th</sup> to 14<sup>th</sup> December 2025**

Rainfall was recorded over several parts of the country, as shown in **Figure 4**.

The highest seven-day rainfall total (160.2mm) was recorded at Winfred Kavengi Rainfall Station in Kitui County.

The same station recorded the highest amount of rainfall within 24-hours: 160.2mm on 13<sup>th</sup> December 2025.

Comparing the 1<sup>st</sup> to 7<sup>th</sup> December 2025 and the 8<sup>th</sup> to 14<sup>th</sup> December 2025 periods, it is noted that rainfall amounts continued to increase across the country.

### 2.2 Temperature Review

Comparing the 1<sup>st</sup> to 7<sup>th</sup> December 2025 and the 8<sup>th</sup> to 14<sup>th</sup> December 2025 periods, it is noted that day-time (maximum) temperatures decreased in most stations except a few, including Voi, Lamu, Eldoret and Mombasa, among others that had an increase. Night-time (minimum) temperatures increased over several parts of the country except over a few stations like Wajir, Suba, Nakuru and Lamu that recorded decreases.

Lodwar Meteorological Station recorded the highest daily maximum temperature: 37.1°C on 10<sup>th</sup> December 2025, while Nyahururu Meteorological Station recorded the lowest daily minimum temperature: 4.7°C on 8<sup>th</sup> December 2025. Mandera Meteorological Station recorded the highest seven-day average maximum temperature, and Nyahururu Meteorological Station had the lowest seven-day average minimum temperature: 36.6°C and 8.3°C, respectively (see **Figure 5**).

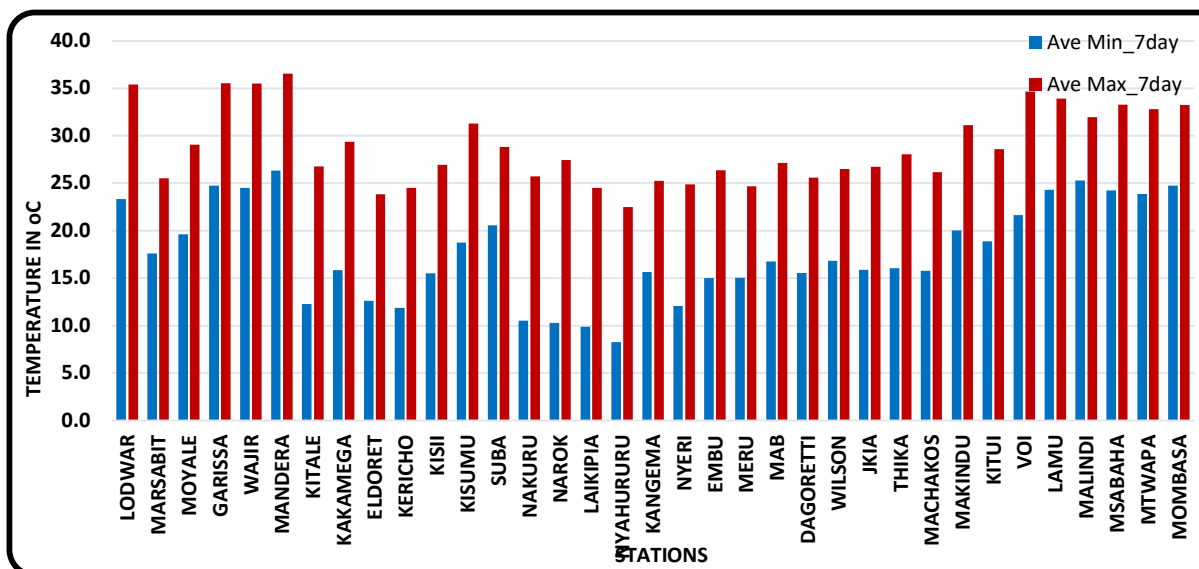


Figure 5: Seven-Day Average Maximum and Minimum Temperatures for 8<sup>th</sup> to 14<sup>th</sup> November 2025

***N.B: This forecast should be used in conjunction with the daily (24-hour) and five-day forecasts issued by this Department. County specific forecasts are available from the offices of respective County Directors of Meteorological Services.***

Kennedy Thiong'o  
**FOR Ag. DIRECTOR, KENYA METEOROLOGICAL DEPARTMENT**

## APPENDIX I: INTERPRETATION OF TERMS USED

<i>Term</i>	<i>Rainfall Amount (24 hrs.)</i>	<i>Description</i>
Light	< 5 mm	Gentle rain, drizzle.
Moderate	5–20 mm	Steady, noticeable rain.
Heavy	21–50 mm	Intense rain, possible thunder.
Very Heavy	> 50 mm	Prolonged rain.

<i>Term</i>	<i>Area Affected</i>	<i>Description</i>
Few places	< 33%	Rain in a small portion of the region.
Several places	33% to 66%	Rain in multiple but not most parts of the region.
Most places	> 66%	Rain in nearly all parts of the region.

<i>Term</i>	<i>Area Affected</i>	<i>Description</i>
Isolated	Less than 25%	Very few areas affected.
Scattered	25–50%	Several, but not most, areas affected.
Numerous	51–70%	Many areas affected.
Widespread	Over 70%	Almost all areas affected.

<i>Term</i>	<i>Time Coverage (%)</i>	<i>Meaning</i>
Occasional	Less than 25%	Happens rarely or a few times.
Intermittent	25% – 50%	Starts and stops, comes and goes.
Frequent	51% – 75%	Occurs regularly.
Very Frequent / Common	More than 75%	Happens almost all the time.

<i>Term</i>	<i>Probability of Occurrence</i>	<i>Description</i>
Possible	10–30%	There is low confidence.
Chance of/ May	31–50%	There is moderate confidence.
Likely	51–75%	The event is more probable than not.
Expected	76–90%	There is high confidence.
Very Likely	91–99%	There is very high confidence. Almost certain.
Certain	100%	The event is guaranteed to occur.