



REPUBLIC OF KENYA
MINISTRY OF ENVIRONMENT, CLIMATE CHANGE AND FORESTRY
KENYA METEOROLOGICAL DEPARTMENT

COUNTY METEOROLOGICAL SERVICES, LAIKIPIA COUNTY
P.O. BOX 192, 10400 NANYUKI

e-mail: kmdcdmlaikipia@gmail.com, **CDMS:** Njiru David: **Tel.** 0721218207

For further information, please contact: Director KMD

Tel: +254724255153/4

e-mail: director@meteo.go.ke, info@meteo.go.ke **Website:** <http://www.meteo.go.ke>

Ref: MET/Laikipia County/12/25

Date of issue; 22 December, 2025

WEATHER FORECAST FOR THE NEXT SEVEN DAYS VALID 23 - 29 Dec, 2025

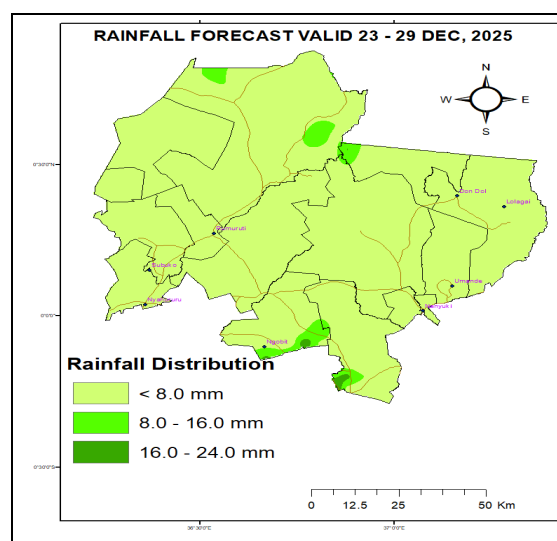
Forecast for the next Seven days (23 - 29 December, 2025) indicates;

- Mainly sunny intervals are expected to prevail over most places
- However, light to moderate showers of rains are likely over Few Places
- The Maximum temperatures expected to range between 20 – 28°C and the (Minimum) temperatures to range 06 - 16°C

Review of weather for the last seven-days (16 - 22 De, 2025)

- Stations that recorded Light to Heavy amounts of rainfall includes Ol Pejeta, DolDol, Nanyuki, Tigithi, Mugie etc
- *Comparing the last two weeks the precipitation amounts had a slight increase mainly over the stations in Laikipia East.*
- Both the day time (Max) temperatures and the Night time (Min) temperatures were low in showers

Expected Rainfall Distribution for the Next Seven Days 23 - 29 Dec, 2025)



Early morning clouds giving way to sunny intervals are expected over most places.

Less than 25mm of the cumulated weekly rainfall is predicted as indicated on the adjacent rainfall forecast map

Detailed Weather Forecast for the Next Seven Days Valid 23 - 29 Dec, 2025

REGION	TIME	TUESDAY 23/12/2025	WEDNESDAY 24/12/2025	THURSDAY 25/12/2025	FRIDAY 26/12/2025	SATURDAY 27/12/2025	SUNDAY 28/12/2025	MONDAY 29/12/2025
LAIKIP IA NORTH	Morning	Cloudy/ Sunny	Sunny	Cloudy/Su unny	Sunny	Cloudy/Su unny	Sunny	Cloudy/S unny
	After noon	Showers over Few Places	Showers over Few Places	Sunny Intervals	Sunny Intervals	Sunny Intervals	Sunny Intervals	Showers over Few Places
	Night	Partly Cloudy	Partly Cloudy	Partly Cloudy	Partly Cloudy	Partly Cloudy	Partly Cloudy	Partly Cloudy
TEMPS	Max/ Min	24/13	25/13	26/12	28/12	28/13	27/14	28/14
LAIKIP IA EAST	Morning	Cloudy/ Sunny	Sunny	Cloudy/Su unny	Sunny	Sunny	Sunny	Cloudy/S unny
	After noon	Showers over Few Places	Showers over Few Places	Sunny Intervals	Sunny Intervals	Showers over Few Places	Showers over Few Places	Showers over Few Places
	Night	Partly Cloudy	Partly Cloudy	Partly Cloudy	Partly Cloudy	Partly Cloudy	Partly Cloudy	Partly Cloudy
TEMPS	Max/ Min	24/12	25/12	27/12	26/10	26/10	25/11	25/11
LAIKIP IA WEST	Morning	Cloudy/ Sunny	Sunny	Cloudy/Su unny	Cloudy/ Sunny	Sunny	Cloudy/ Sunny	Cloudy/S unny
	After noon	Showers over Few Places	Sunny Intervals	Showers over Few Places	Sunny Intervals	Sunny Intervals	Showers over Few Places	Showers over Few Places
	Night	Partly/ Cloudy	Partly Cloudy	Partly Cloudy	Partly Cloudy	Partly Cloudy	Partly Cloudy	Partly Cloudy
TEMPS	Max/ Min	21/10	25/10	23/09	25/10	25/09	23/09	24/10

➤ **TS – Thunderstorms; AWS - Automatic Weather Station**

➤ Further outlook indicates below average rainfall for the month of December, 2025 compared with the long term mean for December.

➤ The spatial and temporal distribution of rainfall in the month of December 2025 is expected to be poor.

➤ The Daily Mean Temperatures are likely to be warmer than average over most places, but reduce in the days with precipitation.

COMPARING CUMMULATED RAINFALL AMOUNTS FOR THE LAST TWO WEEKS

STATION	09 – 15 Dec, 2025	16 – 22 December, 2025
Mutara Orchards (Office Area)	18.0 mm	24.4 mm
Lamuria Met. Stn.	8.0 mm	15.7 mm
Rumuruti	-	-
Muhotetu CC	-	-
Sipili	Nil	Nil
Ngárua (Kinamba – AWS)	8.4 mm	0.1 mm
OI Mysor Sosian	-	-
Mugie Conservancy (Centre)	13.8 mm	1.7 mm
Nanyuki MET. Station	50.4 mm	11.5 mm
Kimanjo Pri. Sch AWS	5.4 mm	2.3 mm
Survey Sec. Sch. AWS	3.9 mm	1.9 mm
Lokusero Sec. Sch. AWS	12.1 mm	12.0 mm
Dol Dol Boys Sch. (AWS)	27.4 mm	34.6 mm
Ngobit Police Stn. AWS	24.1 mm	17.9 mm
Lol-Daiga Stations		
1). Barrier	-	-
2). Central	-	-
3). Northern	-	-
OI Pejeta Rainfall Stations		
1). Kamock	30.0 mm	32.5 mm
2). OPC HQ site	39.0 mm	22.0 mm
3). Golf 3	44.0 mm	8.0 mm
4). Oscar 2 - 5	42.0 mm	29.0 mm
5). Research	14.9 mm	18.0 mm
6). Sirima	14.0 mm	53.6 mm
7). Mutara (Zulu 3)	33.5 mm	9.0 mm
OI Jogi Conservancy Rainfall Stations		
1). Main House	13.6 mm	Nil
2). Marula	7.5 mm	Nil
Borana Conservancy Rainfall Stations		
1). Headquarters	Nil	18.0 mm
2). Waitabit	Nil	18.0 mm

KEY SCIENTIFIC TERMS USED IN THE FORECAST			
RAINFALL CATEGORIES		RAINFALL COVERAGE	
< 5 mm	Light	TERMs	MEANING
5 – 20 mm	Moderate	Most places	Between 67% and 100%
20 – 50 mm	Heavy	Several Places	Between 33% and 67%
> 50 mm	Very heavy	Few places	Below 33%

Note; *It's important to follow up this weekly forecast with the 24hr forecast issued daily by the Kenya Meteorological Department.*