



REPUBLIC OF KENYA

MINISTRY OF ENVIRONMENT, CLIMATE CHANGE AND FORESTRY

KENYAMETEOROLOGICALDEPARTMENT

TANA RIVER COUNTY METEOROLOGICAL SERVICES

P.O. Box 1-70101...HOLA

Telephone: +254(0)725 657 203

E-mail:cdmtanariveri@gmail.com/kalu.nyale@yahoo.com

Website:<http://www.meteo.go.ke>

When replying please quote

Ref. No. MET/TANA RIVER/FCST/MAM 2026/02.

Date 10th/2/2026.

1.0 THE OUTLOOK FOR THE “LONG RAINS” (MARCH-APRIL-MAY) 2026 SEASON;
REVIEW OF THE OCTOBER-DECEMBER 2025 “SHORT RAINS SEASON”.

1.HIGHLIGHTS

1.1 Outlook for March- April-May 2026 season

- The seasonal forecast indicates near average to below average rainfall is expected over the county. However Occasional heavy rainfall events are likely to occur over a few areas during March - April-May 2026 “long rain” season.
- The rainfall distribution is expected to be poor over parts of the county.
- The seasonal rainfall is expected to peak during the month of April for the hinterland and expected to peak during the month of May for Coastal parts of the county like kipini.
- The seasonal temperature forecast indicates warmer-than-average (> 30°C.)

1.2 The seasonal rainfall onset and cessation.

- The seasonal rainfall onset is expected during the 3rd to 4th week of March in all Wards in Tana North (Bura), Tana River (Galole) and Garsen (Tana Delta) bordering Kitui county.
- The cessation is 2nd to 3rd week of May 2026.
- 2nd to 3rd week of April 2026 is expected to be the rainfall onset for all other wards in Garsen (Tana Delta) bordering the Indian Ocean.
- The cessation is expected to continue in to June 2026.

1.3 Review of the October-November-December (OND) 2025 “Short-Rains” Season

- Near to below normal rainfall was received in most parts of the county.
- The rainfall was poorly distributed in time and space with much of the county experiencing prolonged dry spells.
- Temperatures were warmer-than-average over the whole county.

2.0. FORECAST FOR MARCH-APRIL-MAY (MAM) 2026 “LONG RAINS SEASON”

- The forecast for March-April-May (MAM) 2026 “Long-Rains” indicates most parts of Tana River County are expected to receive **Near average to below average rainfall** for the season.
- The MAM rains distribution both in time and space is expected to **be poor** over most parts of the County.
- **Parts of Tana River County** bordering Kitui county, the expected rainfall is **near-average to below-average**. However, Occasional heavy rainfall events are likely to occur over a few areas.
- The peak of the MAM 2026 rainfall season is expected to be the **month April** for the hinterland.
- **Parts of Tana Delta, all** wards in Garsen bordering the Indian Ocean. Rainfall is likely to be below-average. However, occasional heavy rainfall events are likely to occur in a few areas.
- The peak of the MAM 2026 rainfall season is expected to be the **month May** for the Coastal areas like Kipini.
- The temperatures are expected to be **warmer than average (> 30°C)**, over most parts of the County

The figure below (Left) shows the rainfall forecast distribution across Kenya in general and Tana River County specific (Right).

Tana River County March April and May (MAM) 2026 Rainfall outlook

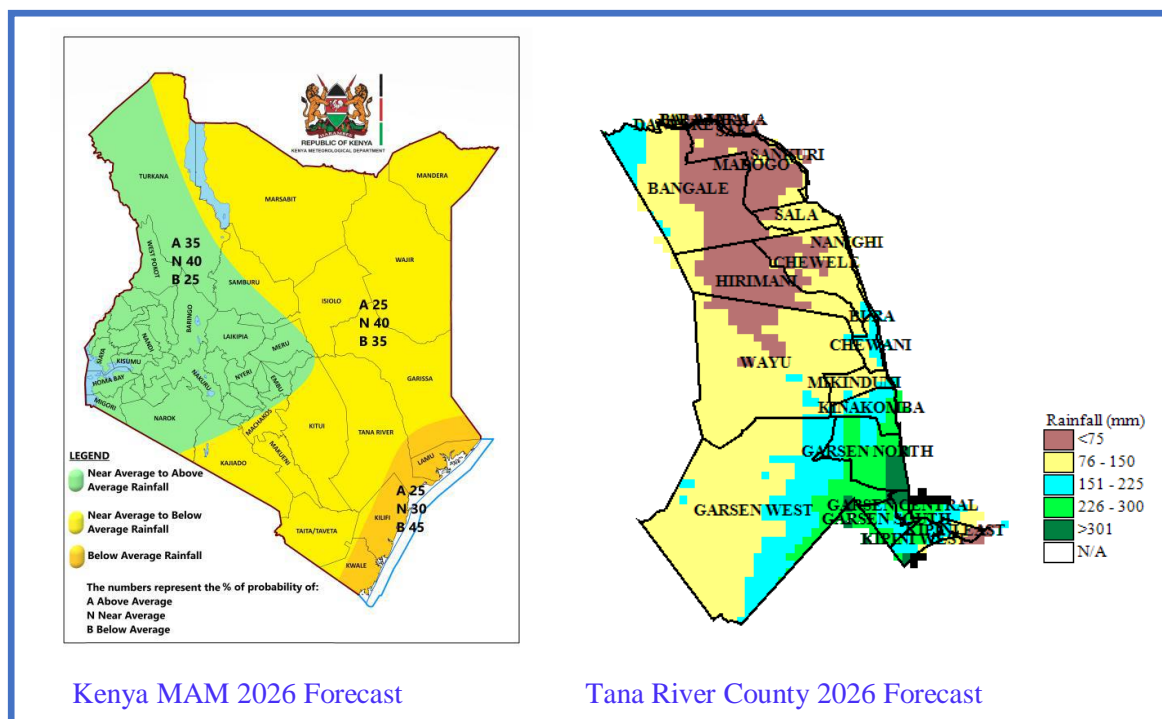


Figure 1: March to May 2026 “Near average to below average rainfall” forecast rainfall scenario

EXPECTED SEASONAL RAINFALL DISTRIBUTION

The spatial and temporal distribution of the March - May 2025 seasonal rainfall is expected to have apoor to fair distribution for most parts of the County.

- During the month of **March 2026**, the rainfall season is expected to start over some parts of the County bordering Kitui county and also the Tana basin so we should **expect some floods** downstream.
- **April we expect to be the peak month** expected in some parts of the county especially parts bordering Kitui County.
- **May is expected to be the peak** month of the season for most parts of the County bordering the coast (Tana delta).
- However, because Tana River basin i.e. Meru, Embu Tharaka- Nithi Kirinyaga, and central Kenya regions Rainfall is likely to **be near-average to above-average With Occasional heavy rainfall events** also likely to occur in several parts of the region., therefore Tana County **should expect to have some floods** down river tana.

4. EXPECTED ONSET AND CESSATION DATES

The figure shows the rainfall onset across Kenya in general and Tana River County specific. Tana River County March April and May (MAM) 2026 Rainfall onset and cessation dates

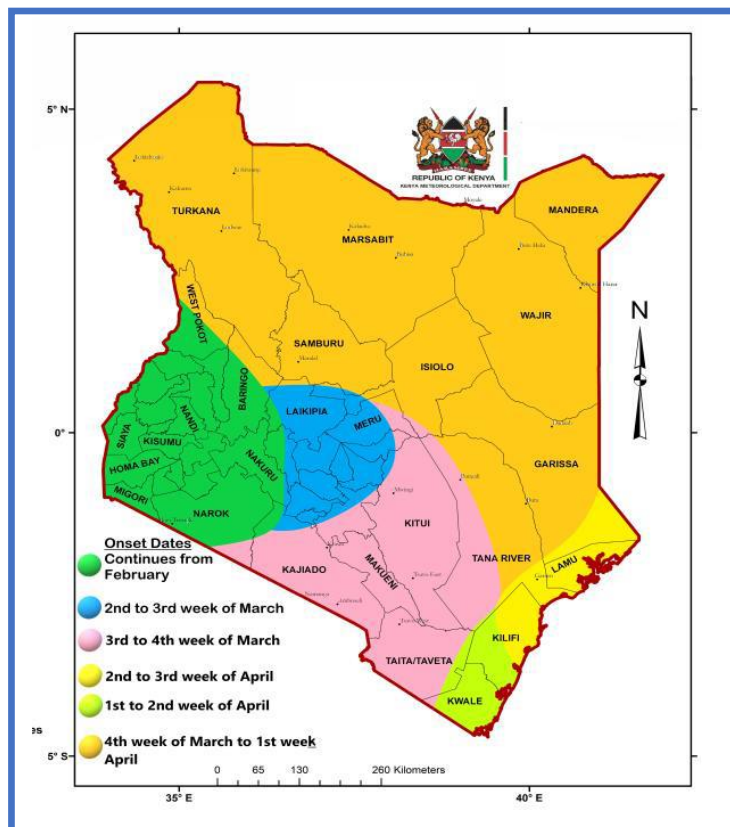


Figure 2: March to May 2026 rainall onset and cessation dates

Tana River County	Onset dates	Cessation dates
All wards in Tana north (Bura) Tana River (Galole) and Garsen (Tana Delta) bordering Kitui county	3 rd to 4 th week of March 2026	2 nd to 3 rd week of May 2026
Parts of Tana Delta, all wards in Garsen bordering the Indian Ocean	2 nd to 3 rd week of April 2026	Rains Continues in to June 2026

KEY SCIENTIFIC WORDS

Rainfall performance	
Rainfall as % of the LTM/Range	description
<75%	Below normal (depressed)rainfall
75% and 125%	Near normal rainfall
>125%	Above normal (enhanced) rainfall

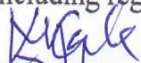
Rainfall coverage	
Term	Meaning
Most placed	Between 66% to 100%
Several places	Between 33% to 66%
Few places	Between 0% to 33%

5.0 POTENTIAL IMPACTS OF THE MAM 2024 RAINS

Following the forecast of **near average to below average rainfall** over most parts of the county, various sectors are expected to be impacted differently.

N/B:

This forecast should be used in conjunction with the five-day, weekly, monthly forecast including regular updates, advisories and alerts issued by this office.


Kalu G. Nyale.

County Director of Meteorological Services:
Tana river County