



KMD 10 DAY AGROMETEOROLOGICAL BULLETIN



Ref: MET/8 /001/1 Issue No: 04/2026

Date: 12/02/2026

DEKAD 04 PERIOD: 1ST – 10TH FEBRUARY 2026.

1.0 HIGHLIGHTS

Precipitation: Most parts of the country experienced below normal rainfall during the period under review, with cumulative totals remaining below the long-term dekadal mean. (fig 1.1& fig 1.2)

Rainfall Recorded: The highest rainfall amount was recorded at Kisumu station in the Nyanza region with 119.5 mm, followed by Suba station which recorded 84.0 mm within the same region.

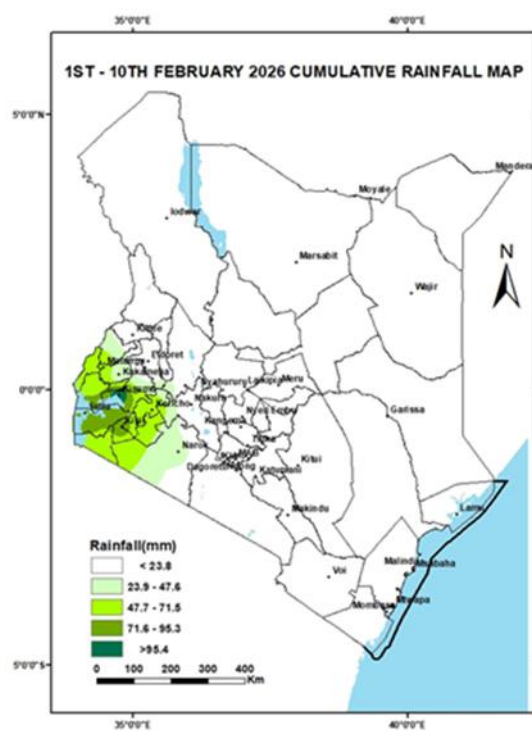


Fig 1.1

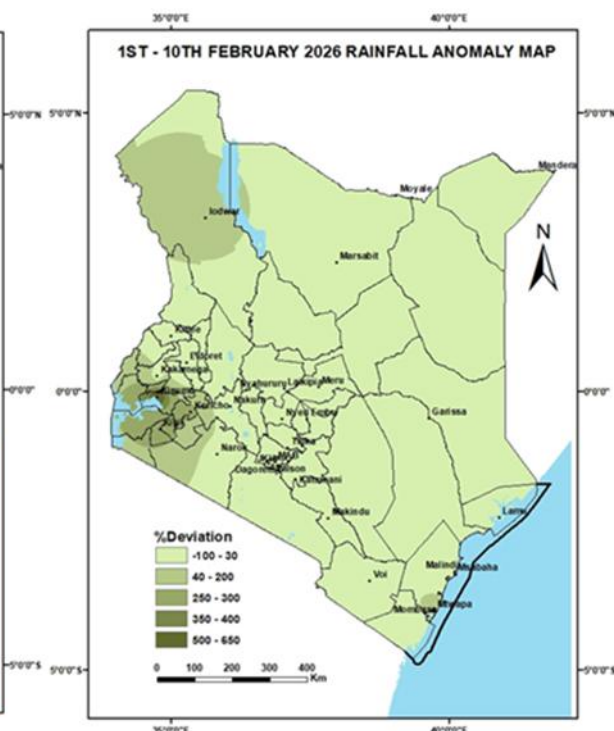
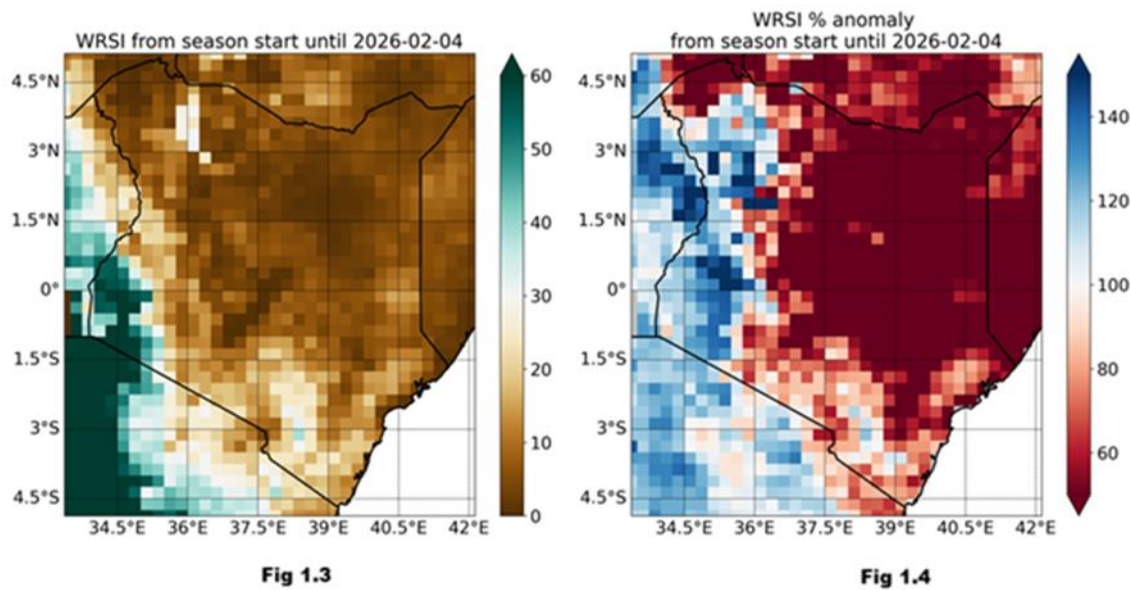
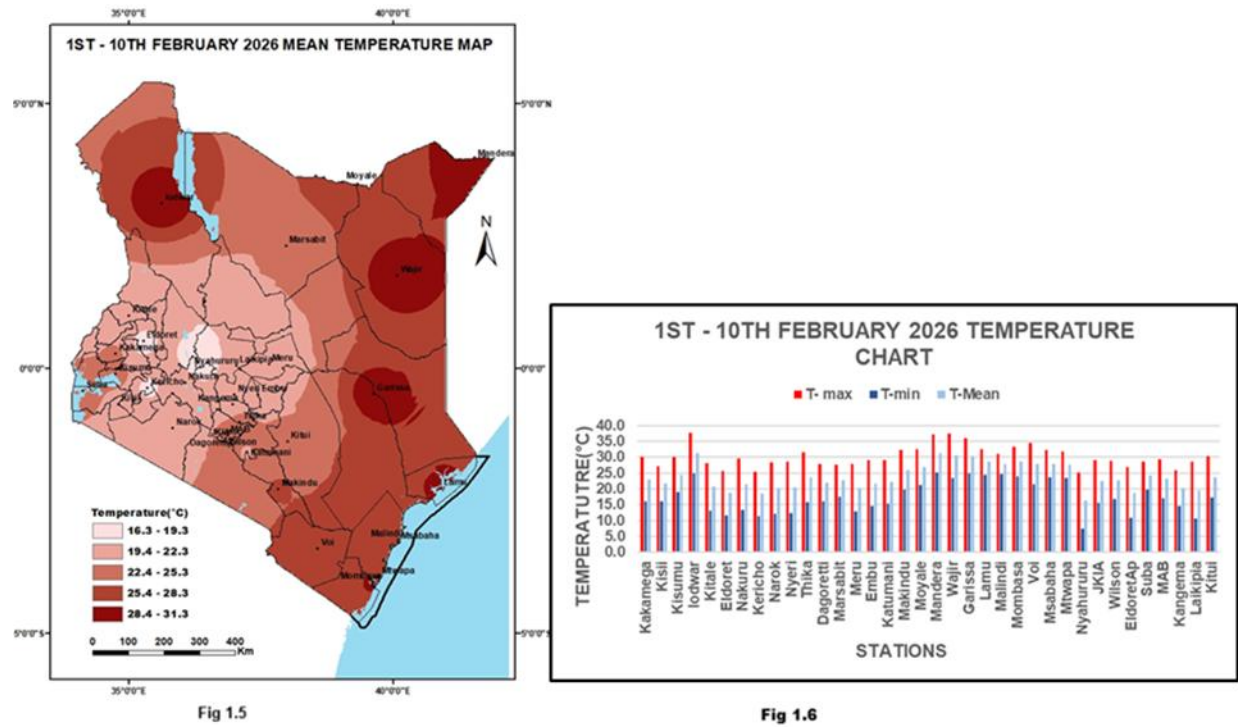


Fig 1.2

Soil Moisture: Soil moisture levels remain low due to continuous dry spell in most parts of the country, thereby impacting negatively on agricultural activities and pasture growth. (fig 1.3& fig 1.4)



Temperature Trends: A slight increase in mean air temperature was observed across most parts of the country during the review period. (fig 1.5 & fig 1.6)



Evaporation: Total pan evaporation rates have reduced slightly across several parts of the country, indicating lower moisture loss.

2.0 REGIONAL WEATHER AND AGRICULTURAL CONDITIONS

2.1 Western and Nyanza Regions

Most stations within the region received above normal rainfall compared to the LTM during the dekad.

Kakamega: Recorded 26.4 mm of rainfall during the dekad, mean air temperature slightly decreased to 23.0°C. Land preparations are ongoing.

Kisii: Received 75.2 mm of rainfall. Temperature decreased to 21. 6°C. Harvesting activities have largely been completed across most areas, with land preparation ongoing in anticipation of the next cropping season.

2.2 Rift Valley Region

Most stations in the region reported below normal rainfall compared to the LTM of the dekad.

Kericho: Recorded 67.1 mm of rainfall; temperature slightly decreased from 18.9°C to 18.5°C. Farmers are still preparing their farms in readiness for the next growing season.

Kitale: Recorded 0.7 mm of rainfall during the dekad; mean air temperature slightly decreased to 20.7°C. Land preparations are still ongoing for the next crop season.

Eldoret: Recorded 0.2 mm of rainfall; mean air temperature slightly increased to 18.7°C.

2.3 Central and Nairobi Regions

Most stations within the regions recorded below normal rainfall compared to the Long-Term Average.

Thika: No rainfall Received; mean air temperature slightly increased to 23.7°C. Maize has dried up at flowering stage due to lack of rainfall.

Dagoretti: No rainfall Received, and mean air temperature slightly increased to 22.0°C. Crops performance has been poor due to too much sun.

Kabete: No rainfall recorded; Crops are stressed due to prolonged dry conditions below normal yield expected.

Nyeri: Recorded 7.1 mm of rainfall; Mean air temperature slightly increased to 20.4°C. The maize crop is at post flowering (wax ripeness) and doing well due to occasional rain being experienced in the area.

2.4 Eastern Region

Most stations reported below normal rainfall in the region. Scattered clouds cover dominated during the dekad.

Meru: Recorded 1.4 mm of rainfall, mean temperature slightly increased to 20.3°C. Maize crop affected by moisture stress.

Embu: No rainfall recorded; temperature slightly increased to 21.8°C. Below normal yield experienced due to insufficient rainfall.

Katamani: No rainfall recorded; the mean air temperature increased to 22.2°C, the crop performance is poor due to prolonged dry spell in the region.

2.5 Coastal Region

Most stations in the region recorded below normal rainfall compared to the LTM. **Mtwapa:** Received 1.0mm of rainfall; mean temperature slightly increased to 27.6°C. Mango harvesting and farm preparations are ongoing.

Msabaha: No rainfall recorded, mean air temperature slightly decreased to 28.0°C. Farms are lying idle and maize crop is affected by too much sun.

2.6 North Eastern Region

Most Stations in the region reported below normal rainfall during the review period.

The region experienced a slight increase in mean air temperatures ranging between 30.4°C in Garissa to 31.2°C Mandera. Scattered cloud cover dominated the region.

3 EXPECTED WEATHER, SOIL AND CROP CONDITIONS DURING THE NEXT TEN (10) DAYS 11TH – 20TH FEBRUARY 2026.

Forecast (Next 10 Days): Sunny and dry conditions are expected to prevail over most parts of the country throughout the dekad. Isolated and occasional rainfall may occur in the Highlands East and West of the Rift Valley, the Lake Victoria Basin and the South-Eastern lowlands.

3.1 Western, Nyanza, and Rift Valley:

Morning rains are likely to occur over few places. Afternoon showers and thunderstorms expected over few places during the first half of the forecast period increasing to several places thereafter. Night showers are likely to occur over few places.

Farmers are advised to continue with land preparations. However, Delay large-scale planting of rain-fed crops until more consistent rainfall is received. The expected rains will support pasture regeneration, benefiting livestock in the region.

3.2 Central Region & Nairobi:

Sunny and dry conditions expected, with occasional rainfall over isolated areas in the second half of the dekad.

Farmers should continue with land preparation. Provide adequate water and shade for livestock to minimize heat stress. The expected rainfall will help in pasture regeneration in the region.

3.3 North Western Region:

Sunny and dry conditions expected during the day with partly cloudy conditions expected at night.

Ensure reliable water sources for livestock and reduce overgrazing by practicing controlled grazing.

3.4 North Eastern Region:

Sunny and dry conditions expected. Occasional light rainfall may occur in a few areas.

Pastoralists should provide adequate water and shelter for livestock and utilize any rainfall for pasture recovery. Farmers are advised to delay planting of rain-fed crops until adequate rainfall is received.

3.5 South-Eastern Lowlands:

Below-normal rainfall expected. Conditions will be mainly sunny and dry with isolated rainfall.

Farmers should enhance fodder conservation using crop residues, hay, or silage to mitigate dry conditions.

3.6 Coastal Counties:

Sunny and dry conditions expected, with isolated rainfall over a few areas.

Ensure adequate drinking water and provide shade to reduce heat stress. Warm and dry conditions may increase pest pressure; regular monitoring and timely control are recommended.

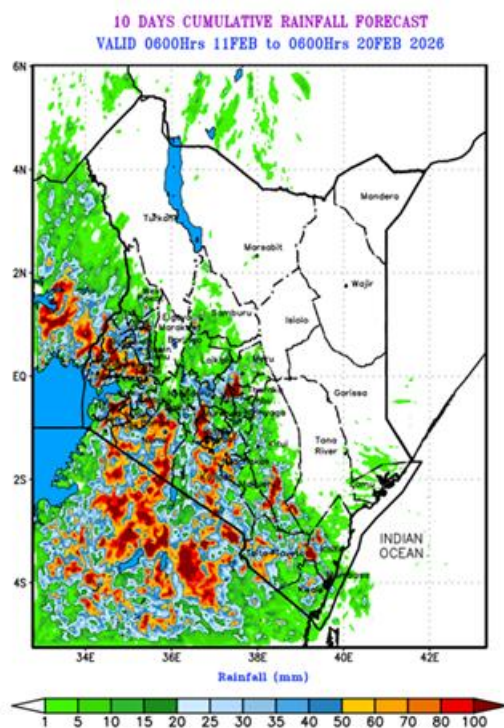


Fig 3.1

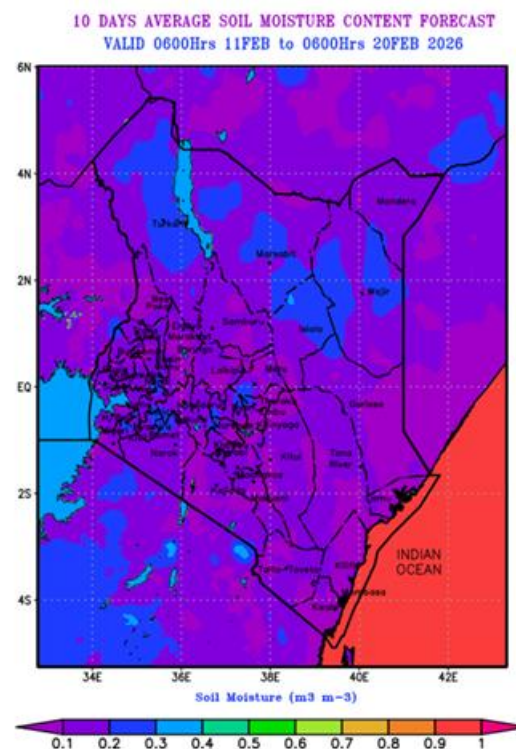


Fig 3.2

4 AGRO-ADVISORY FOR FARMERS AND PASTORALISTS.

Farmers:

- ❖ Supplementary irrigation, where available, is recommended for high-value crops such as vegetables and horticultural produce.
- ❖ Delay planting of rain-fed crops until consistent rainfall is established. Early-maturing and drought-tolerant varieties are advised.
- ❖ Dry conditions may favor certain pests; farmers should regularly monitor crops and apply appropriate control measures when necessary.
- ❖ Farmers are advised to complete field preparations before the onset of rains.

Pastoralists:

- ❖ Livestock keepers are advised to manage pasture and water resources carefully, including controlled grazing and water harvesting, to minimize stress on animals.
- ❖ Livestock keepers are encouraged to harvest and store fodder, and ensure reliable water sources for animals.

General Advisory:

Farmers and pastoralists are encouraged to stay in touch with their nearest agricultural and livestock extension officers for localized advice and updates. Use early warning platforms and weather apps where available

**Paul Oloo****For: Ag. Director Meteorological Services**

For inquiries or any clarification, please use the email below

E-mail: agrometkenya@gmail.com