



REPUBLIC OF KENYA

MINISTRY OF ENVIRONMENT, CLIMATE CHANGE AND FORESTRY

State Department for Environment & Climate Change

KENYA METEOROLOGICAL DEPARTMENT

Dagoretti Corner, Ngong Road, P. O. Box 30259, 00100 GPO, Nairobi, Kenya

Telephone: 254 (0) 20 3867880-7, 0724 255 153/4

E-mail: director@meteo.go.ke, info@meteo.go.ke Website: <http://www.meteo.go.ke>

Our Ref: MET/7/348

Date: 16th February 2026

WEEKLY WEATHER FORECAST FOR 17TH TO 23RD FEBRUARY 2026 & REVIEW FOR 9TH TO 15TH FEBRUARY 2026

SUMMARY

Weather Forecast for 17th to 23rd February 2026

- Rainfall is expected to continue in the Highlands East and West of the Rift Valley, the Lake Victoria Basin, the Rift Valley and parts of the South-eastern Lowlands and the Coast. Northeastern and Northwestern Kenya are likely to be generally sunny and dry.

Weather Review for 9th to 15th February 2026

- Rainfall was recorded in a few parts of the country.
- Daytime (maximum) temperatures increased in several stations including Makindu, Kitui and Voi and decreased in Suba, Kisii and Kericho among others.
- Night-time (minimum) temperatures decreased throughout the country with only Marsabit, Mandera and Kitale recording minimal increases.

1 WEATHER FORECAST FOR 17TH TO 23RD FEBRUARY 2026

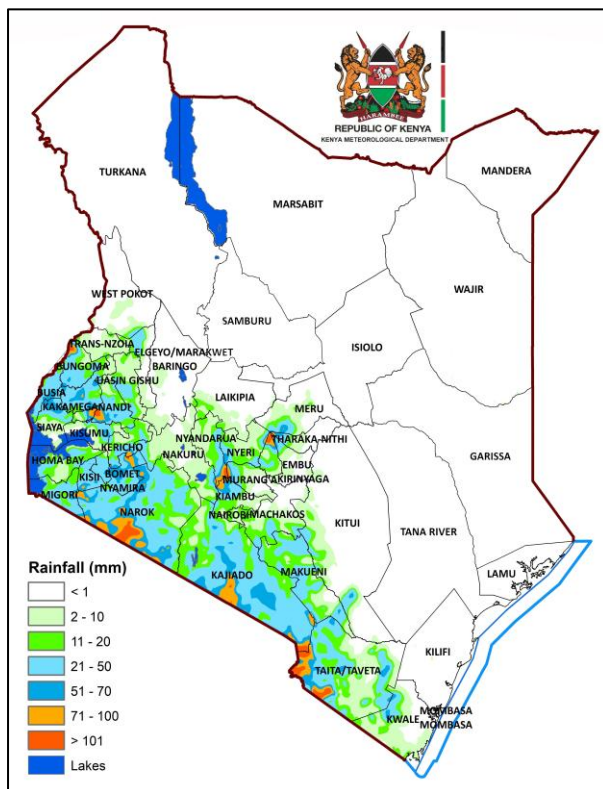


Figure 1: Forecasted Seven-Day Total Rainfall for 17th to 23rd February 2026

Rainfall is expected to continue in the Highlands East and West of the Rift Valley, the Lake Victoria Basin, the Rift Valley and parts of the South-eastern Lowlands and the Coast, as depicted in **Figure 1**. Northeastern and Northwestern Kenya are likely to be generally sunny and dry.

Daytime (maximum) average temperatures of more than 30°C are expected in several parts of the country including the Coast, the South-eastern Lowlands, North-eastern and North-western Kenya, as shown in **Figure 2**.

Night-time (minimum) average temperatures are expected to be less than 10°C in some parts of the Highlands East and West of the Rift Valley, the Central Rift Valley and in the vicinity of Mt. Kilimanjaro, as illustrated in **Figure 3**.

WEEKLY FORECAST

Follow us on X and IG: x.com/MeteoKenya and Facebook: fb.com/KenyaMeteorologicalDepartment

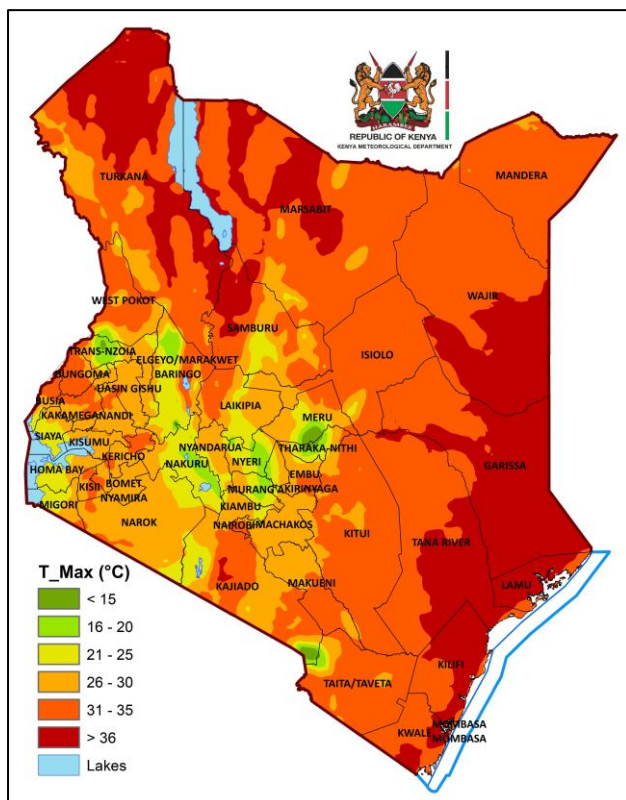


Figure 2: Forecasted Average Maximum Temperatures for 17th to 23rd February 2026

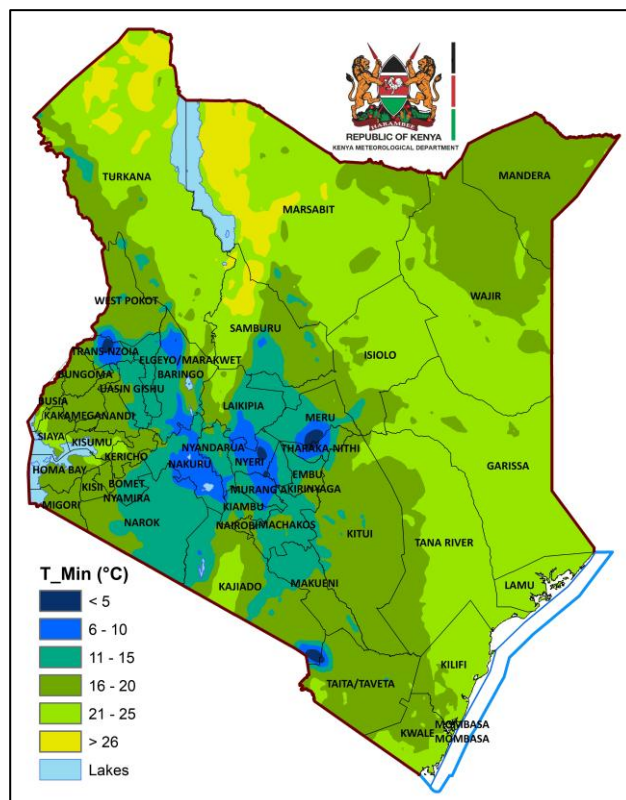


Figure 3: Forecasted Average Minimum Temperatures for 17th to 23rd February 2026

1.1 DETAILED REGIONAL RAINFALL FORECAST FOR 17TH TO 23RD FEBRUARY 2026

1.1.1 *The Highlands West of the Rift Valley, the Lake Victoria Basin and the Rift Valley (Nandi, Kakamega, Vihiga, Bungoma, Siaya, Busia, Baringo, Nakuru, Trans-Nzoia, Uasin-Gishu, Elgeyo-Marakwet, West-Pokot, Kisii, Nyamira, Kericho, Bomet, Kisumu, Homabay, Migori and Narok Counties):*

Morning rains are likely to occur over few places. Afternoon showers and thunderstorms expected over several places. Night showers are likely to occur over few places occasionally spreading to several places.

1.1.2 *North-western Kenya (Turkana and Samburu Counties):*

Sunny intervals are expected during the day, with partly cloudy conditions at night.

1.1.3 *The Highlands East of the Rift Valley (Nyandarua, Laikipia, Nyeri, Kirinyaga, Murang'a, Kiambu, Meru, Embu, Tharaka-Nithi and Nairobi Counties):*

Occasional cloudiness is likely to occur in the mornings giving way to sunny intervals. Afternoon showers are expected over few places occasionally spreading to several places. Nights are expected to be partly cloudy though showers may occur over few places.

1.1.4 *North-eastern Kenya (Marsabit, Mandera, Wajir, Garissa and Isiolo Counties):*

Sunny intervals are expected during the day, with partly cloudy conditions at night.

1.1.5 *The South-eastern lowlands (Machakos, Kitui, Makueni, Kajiado and Taita-Taveta Counties as well as the inland parts of Tana-River County):*

Occasional morning rains as well as afternoon and night showers are likely to occur over few places in Kajiado, Machakos, Makueni and Taita-Taveta Counties.

Sunny intervals are expected during the day in Kitui and the inland parts of Tana-River County, with partly cloudy conditions at night.

1.1.6 *The Coast (Mombasa, Kilifi, Lamu and Kwale Counties as well as the Tana Delta):*

Sunny intervals are expected during the day, with partly cloudy conditions at night.

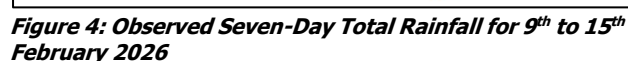
However, there is a possibility of morning and night showers occurring over few places in Kwale County during the first half of the forecast period.

1.2 DETAILED TEMPERATURE FORECAST FOR 17TH TO 23RD FEBRUARY 2026

Expected maximum and minimum temperatures for selected cities and towns are shown in **Table 1**.

TABLE 1: FORECASTED MAXIMUM AND MINIMUM TEMPERATURES FOR SELECTED CITIES AND TOWNS								
CITY/TOWN	MAX (°C)	MIN (°C)	CITY/TOWN	MAX (°C)	MIN (°C)	CITY/TOWN	MAX (°C)	MIN (°C)
LODWAR	39.0	22.0	KISUMU	30.0	17.0	THIKA	31.0	12.0
MARSABIT	29.0	17.0	SUBA	28.0	19.0	MACHAKOS	29.0	13.0
MOYALE	33.0	20.0	NAKURU	28.0	12.0	MAKINDU	32.0	15.0
GARISSA	39.0	23.0	NAROK	27.0	11.0	KITUI	32.0	14.0
WAJIR	39.0	24.0	LAIKIPIA	29.0	10.0	VOI	33.0	18.0
MANDERA	39.0	25.0	NYAHURURU	26.0	08.0	LAMU	34.0	22.0
KITALE	28.0	11.0	KANGEMA	27.0	13.0	MALINDI	31.0	22.0
KAKAMEGA	29.0	15.0	NYERI	28.0	10.0	MSABAHA	33.0	22.0
ELDORET	26.0	10.0	EMBU	28.0	12.0	MTWAPA	33.0	22.0
KERICHO	25.0	10.0	MERU	28.0	12.0	MOMBASA	34.0	23.0
KISII	28.0	14.0	NAIROBI	29.0	10.0			

2.1 Rainfall Review



The highest seven-day rainfall total (106.6mm) was recorded at the rainfall station at Kamusinga High School in Bungoma County.

The rainfall station at Eluuya Girls' Secondary School in Bungoma County recorded the highest amount of rainfall within 24-hours: 68.7mm on 15th February 2026.

Comparing the 2nd to 8th February and the 9th to 15th February 2026 review periods, it is noted that rainfall amounts increased in the Highlands East and West of the Rift Valley, the Lake Victoria Basin and the Rift Valley.



2.2 Temperature Review

Comparing the 2nd to 8th February and the 9th to 15th February 2026 review periods, it is noted that daytime (maximum) temperatures increased in several stations including Makindu, Kitui and Voi and decreased in Suba, Kisii and Kericho among others. Night-time (minimum) temperatures decreased throughout the country with only Marsabit, Mandera and Kitale recording minimal increases.

Wajir Meteorological Station recorded the highest daily maximum temperature: 39.2°C on 10th February 2026 while Nyahururu Meteorological Station recorded the lowest daily minimum temperature: 5.7°C on 11th February 2026. Lodwar Meteorological Station recorded the highest seven-day average maximum temperature: 37.8°C whereas Nyahururu Meteorological Station recorded the lowest seven-day average minimum temperature: 6.5°C (see **Figure 6**).

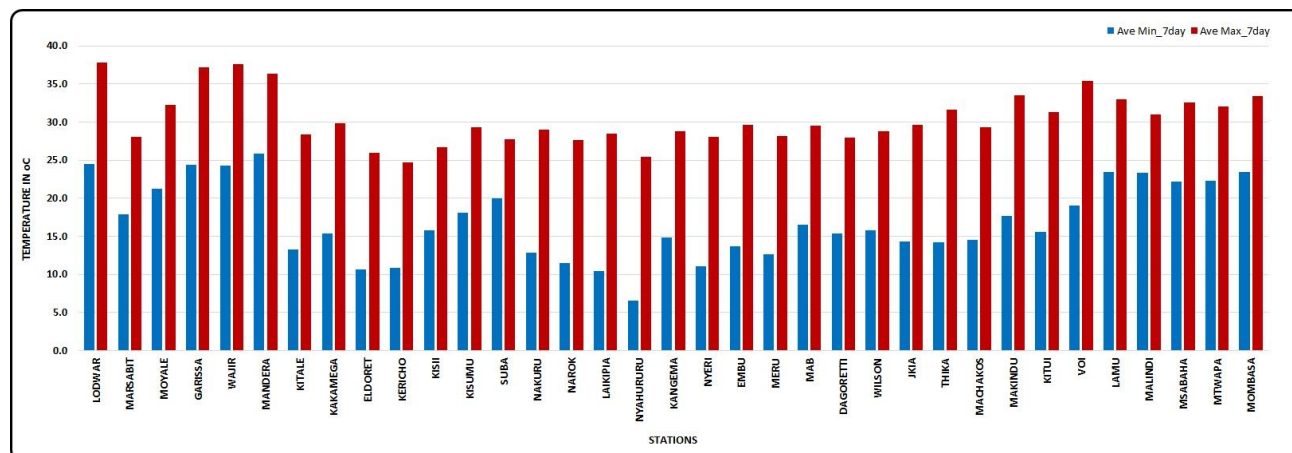


Figure 6: Seven-Day Average Maximum and Minimum Temperatures for 9th to 15th February 2026

N.B: This forecast should be used in conjunction with the daily (24-hour) and five-day forecasts issued by this Department. County specific forecasts are available from the offices of respective County Directors of Meteorological Services.

Edward M. Muriuki
Ag. DIRECTOR, KENYA METEOROLOGICAL DEPARTMENT

APPENDIX I: INTERPRETATION OF TERMS USED

Term	Rainfall Amount (24 hrs.)	Description
Light	< 5 mm	Gentle rain, drizzle.
Moderate	5–20 mm	Steady, noticeable rain.
Heavy	21–50 mm	Intense rain, possible thunder.
Very Heavy	> 50 mm	Prolonged rain.

Term	Area Affected	Description
Few places	< 33%	Rain in a small portion of the region.
Several places	33% to 66%	Rain in multiple but not most parts of the region.
Most places	> 66%	Rain in nearly all parts of the region.

Term	Area Affected	Description
Isolated	Less than 25%	Very few areas affected.
Scattered	25–50%	Several, but not most, areas affected.
Numerous	51–70%	Many areas affected.
Widespread	Over 70%	Almost all areas affected.

Term	Time Coverage (%)	Meaning
Occasional	Less than 25%	Happens rarely or a few times.
Intermittent	25% – 50%	Starts and stops, comes and goes.
Frequent	51% – 75%	Occurs regularly.
Very Frequent / Common	More than 75%	Happens almost all the time.

Term	Probability of Occurrence	Description
Possible	10–30%	There is low confidence.
Chance of/ May	31–50%	There is moderate confidence.
Likely	51–75%	The event is more probable than not.
Expected	76–90%	There is high confidence.
Very Likely	91–99%	There is very high confidence. Almost certain.
Certain	100%	The event is guaranteed to occur.