



**MINISTRY OF ENVIRONMENT, CLIMATE CHANGE AND FORESTRY**  
**STATE DEPARTMENT OF ENVIRONMENT AND CLIMATE CHANGE**  
**KENYA METEOROLOGICAL DEPARTMENT - KAJIADO COUNTY**

E-mail: [cdmskajiado@gmail.com](mailto:cdmskajiado@gmail.com)

**KAJIADO WEEKLY WEATHER FORECAST**

**Date of issue: Monday 23<sup>rd</sup> March 2026**

**Period of forecast: Week 12 / 52\_2026 from**  
**Tuesday 24<sup>th</sup> March , 2026 to Monday 30<sup>th</sup>**  
**March 2026**

**General outlook for the week:**

✓ Rainfall expected to continue over several places during the forecast period with reduced intensity and coverage.

✓ **Winds:** to experience moderate to strong North Easterly at about (3 - 12 m/s)

*Temperature: The Maximum temperatures expected to range from 24 - 33°C. Minimum temperatures from 14 - 22°C*

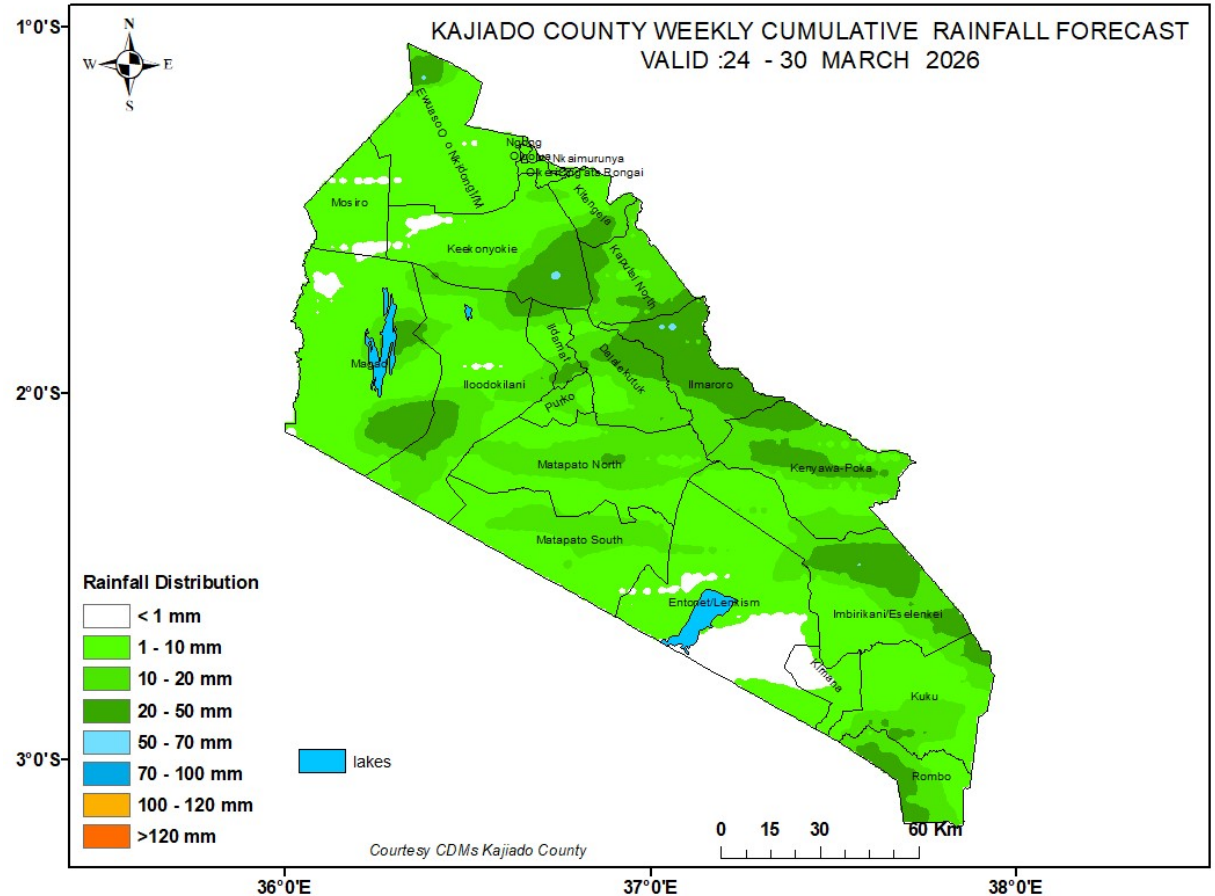
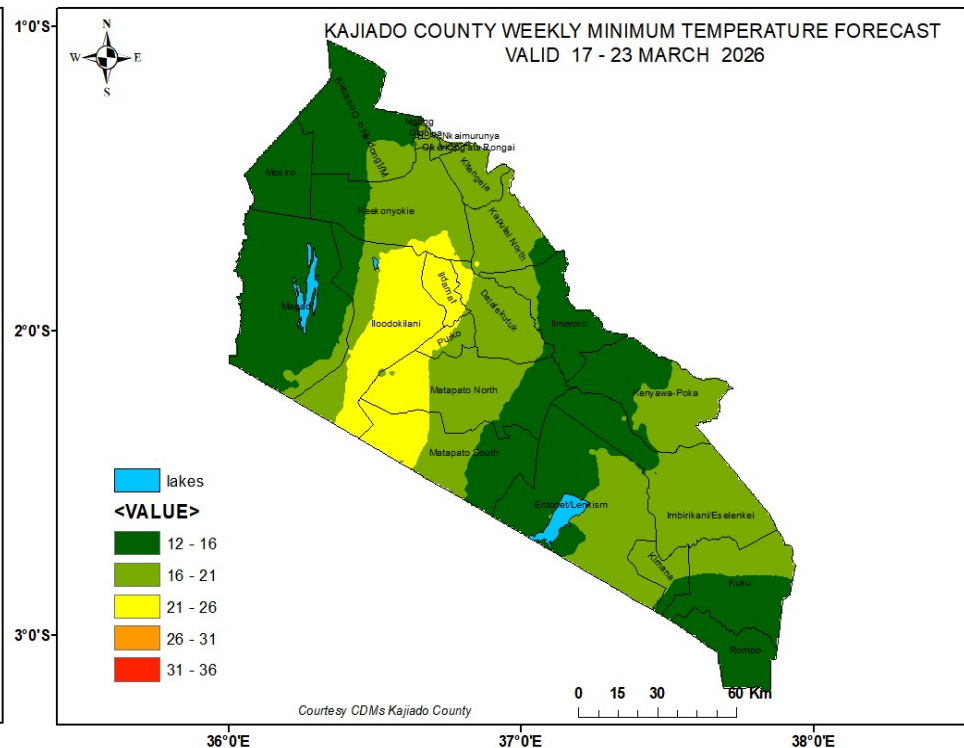
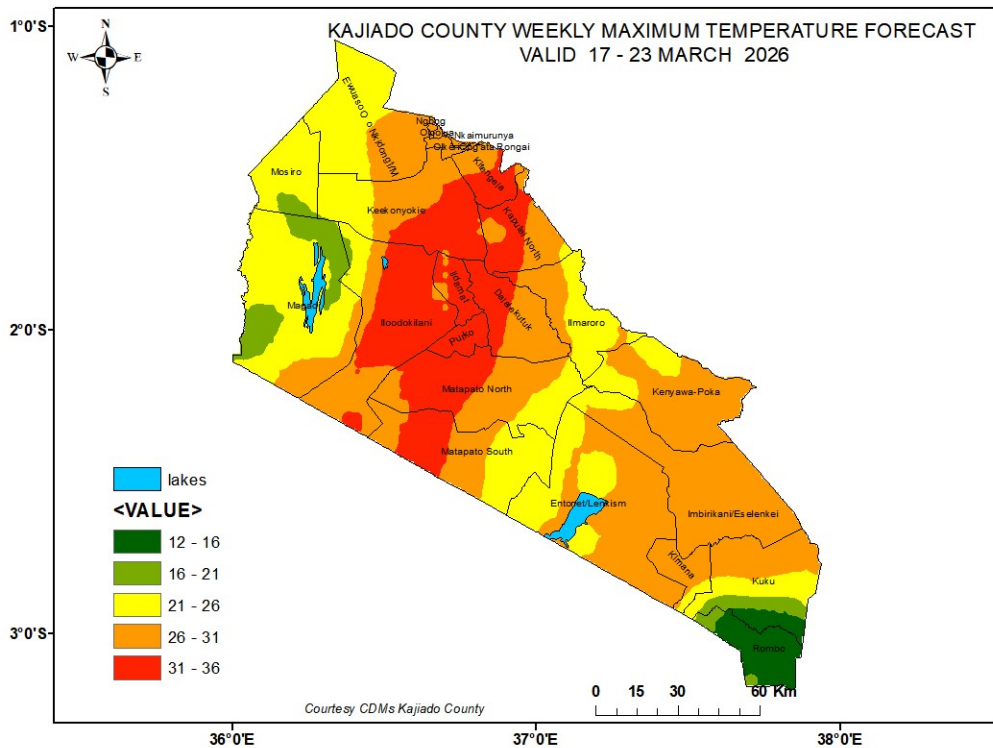


Figure 1: Forecasted seven day total rainfall for 24 - 30 March 2026



27

28

29

30

31

Figure 2: Forecasted average Maximum Temperatures for 24 - 30 March 2026

Figure 3: Forecasted average Minimum Temperatures for 24 - 30 March 2026

Kajiado County comprise of three homogeneous zone categorized as Upper, Middle and Lower zones based on topography as indicated below:

PLACES	TIME	Tuesday 24 / 3 / 2026	Wednesday 25 / 3 / 2026	Thursday 26 / 3 / 2026	Friday 27 / 3 / 2026	Saturday 28 / 3 / 2026	Sunday 29 / 3 / 2026	Monday 30 / 3 / 2026
<b>The UPPER ZONES:</b> Comprise of: <b>Kajiado Central</b> (Matapato North, Matapato South wards), <b>Kajiado East</b> (Oloosirkon/Sholinke ward), <b>Kajiado South</b> (Rombo, Kimana and Kuku wards) and <b>Kajiado North</b> (Ngong, Oloolua, Olkeri, Nkaimurunya and Ongata Rongai wards)	Morning (6am - noon)	Rain Showers	Cloudy and Sunny internals	Cloudy and Sunny internals	Rain Showers	Cloudy and Sunny internals	Cloudy and Sunny internals	Cloudy and Sunny internals
	Afternoon, Evening (Noon - 9pm)	showers and thunderstorms	showers and thunderstorms	Cloudy and Sunny internals	Heavy showers and thunderstorms	Heavy showers and thunderstorms	Cloudy and Sunny internals	Cloudy and Sunny internals
	Night (9pm - 6am)	Moderate showers	Moderate showers	Heavy showers	Heavy showers	Partly Cloudy	Partly Cloudy	Partly Cloudy
	Rainfall distribution	Several places	Few places	Several places	Several places	Few places		
	Temperatures (Min-Max in °C)	15-25C	15-25°C	15 - 25°C	15-25°C	15-25°C	15-25°C	15-25°C
Hazards	Amber	Amber	Green	Amber	Amber	Green	Green	

<b>The MIDDLE ZONES:</b> Comprise of: <b>Kajiado Central</b> (Dalalekutuk, Ildamat, Purko, wards); <b>Kajiado west</b> (Keekonyoike, Mosiro, Ewuaso Nkidong' and Iloodokilani wards); <b>Kajiado East</b> (Kaputiei North, Kitengela and Imaroro wards),	Morning (6am - noon)	Cloudy and Sunny internals	Cloudy and Sunny internals	Cloudy and Sunny internals	Cloudy and Sunny internals	Cloudy and Sunny internals	Cloudy and Sunny internals	Cloudy and Sunny internals
	Afternoon, Evening (Noon - 9pm)	Sunny internals	Sunny internals	showers and thunderstorms	showers and thunderstorms	showers and thunderstorms	Sunny internals	showers and thunderstorms
	Night (9pm - 6am)	Partly Cloudy	Partly Cloudy	Moderate showers	Partly Cloudy	Partly Cloudy	Partly Cloudy	Partly Cloudy
	Rainfall distribution			Few places	Few places	Few places		Few places
	Temperatures (Min-Max in °C)	15-26°C	16-26°C	16-27°C	16-26°C	16-26°C	16-27°C	16-27°C
	Hazards	<b>Green</b>	<b>Green</b>	<b>Amber</b>	<b>Amber</b>	<b>Amber</b>	<b>Green</b>	<b>Amber</b>
<b>The LOWER ZONES:</b> Comprise Kajiado west (Magadi ward); <b>Kajiado East</b> (Kenyawa Poka ward) and <b>Kajiado South</b> (Mbirikani/Eselenkei, Entonet/Lenkism wards).	Morning (6am - noon)	Sunny internals	Sunny internals	Sunny internals	Rain Shower	Sunny internals	Sunny internals	Sunny internals
	Afternoon, Evening (Noon - 9pm)	Sunny internals	Sunny internals	Sunny internals	Sunny internals	Sunny internals	Sunny internals	Sunny internals
	Night (9pm - 6am)	Moderate showers	Moderate showers	Moderate showers	Moderate showers	Partly Cloudy	Partly Cloudy	Moderate showers
	Rainfall distribution	Few places	Few places	Few places	Several places	Few places	Few places	Few places
	Temperatures (Min-Max in °C)	18 - 32°C	18 - 32°C	18 - 32°C	18 - 32°C	18 - 32°C	18 - 33°C	18 - 33°C
	Hazards	<b>Green</b>	<b>Green</b>	<b>Green</b>	<b>Green</b>	<b>Green</b>	<b>Green</b>	<b>Green</b>

- Key to rainfall distribution symbols: No rain likely to fall, rain likely to fall in few places (less than 33%), rain likely to fall in several places (33% -67%), rain likely to fall in most places (more than 67%): **Green** – No weather-related hazards are expected; **Amber** Thunderstorms & lightning

### Commentary of County Weather forecaster:

1. Rainfall expected to continue over several places during the forecast period with reduced intensity and coverage
2. The temperatures are expected to range from 14 – 33°C
3. Winds: Some areas shall experience moderate to strong North- Easterly breeze at 3 - 12 m/s.
4. Expert advice may be obtained from the County department of Agriculture, Livestock, Veterinary, Public Health and Education offices, among others and take advantage of the prevailing and expected conditions. Stay safe and thank you.

46 **For further information, please contact:**

47 County Director of Meteorological Services; **Benson Lubang'a**

48 Mobile: **0722991008 / 0753433074**

49 Email: [cdmskajiado@gmail.com](mailto:cdmskajiado@gmail.com)

50

51 **NB: This forecast should be used in conjunction with the daily (24-hour) forecast issued by KMD.**

52 You can also find more information about the climate and weather in Kenya on the KMD website <http://www.meteo.go.ke>

53

54 **APPENDIX I: INTERPRETATION OF TERMS USED**

55

56

57

<i>Term</i>	<i>Rainfall Amount (24 hrs.)</i>	<i>Description</i>
Light	< 5 mm	Gentle rain, drizzle.
Moderate	5–20 mm	Steady, noticeable rain.
Heavy	21–50 mm	Intense rain, possible thunder.
Very Heavy	> 50 mm	Prolonged rain.
<i>Term</i>	<i>Area Affected</i>	<i>Description</i>
Few places	< 33%	Rain in a small portion of the region.
Several places	33% to 66%	Rain in multiple but not most parts of the region.
Most places	> 66%	Rain in nearly all parts of the region.
<i>Term</i>	<i>Time Coverage (%)</i>	<i>Meaning</i>
Occasional	Less than 25%	Happens rarely or a few times.
Intermittent	25% – 50%	Starts and stops, comes and goes.
Frequent	51% – 75%	Occurs regularly.
Very Frequent / Common	More than 75%	Happens almost all the time.
<i>Term</i>	<i>Probability of Occurrence</i>	<i>Description</i>
Possible	10–30%	There is low confidence.
Chance of/ May	31–50%	There is moderate confidence.
Likely	51–75%	The event is more probable than not.
Expected	76–90%	There is high confidence.
Very Likely	91–99%	There is very high confidence. Almost certain.
Certain	100%	The event is guaranteed to occur.
<i>Term</i>	<i>Area Affected</i>	<i>Description</i>
Isolated	Less than 25%	Very few areas affected.
Scattered	25–50%	Several, but not most, areas affected.
Numerous	51–70%	Many areas affected.
Widespread	Over 70%	Almost all areas affected.

65