



MINISTRY OF ENVIRONMENT, CLIMATE CHANGE AND FORESTRY

STATE DEPARTMENT FOR ENVIRONMENT AND CLIMATE CHANGE

KENYA METEOROLOGICAL DEPARTMENT

Our Ref: MET/Laikipia County/Forecast/03/26

Date issued: 23 March, 2026

LAIKIPIA COUNTY WEEKLY WEATHER FORECAST VALID 24 - 30 MARCH, 2026

SUMMARY

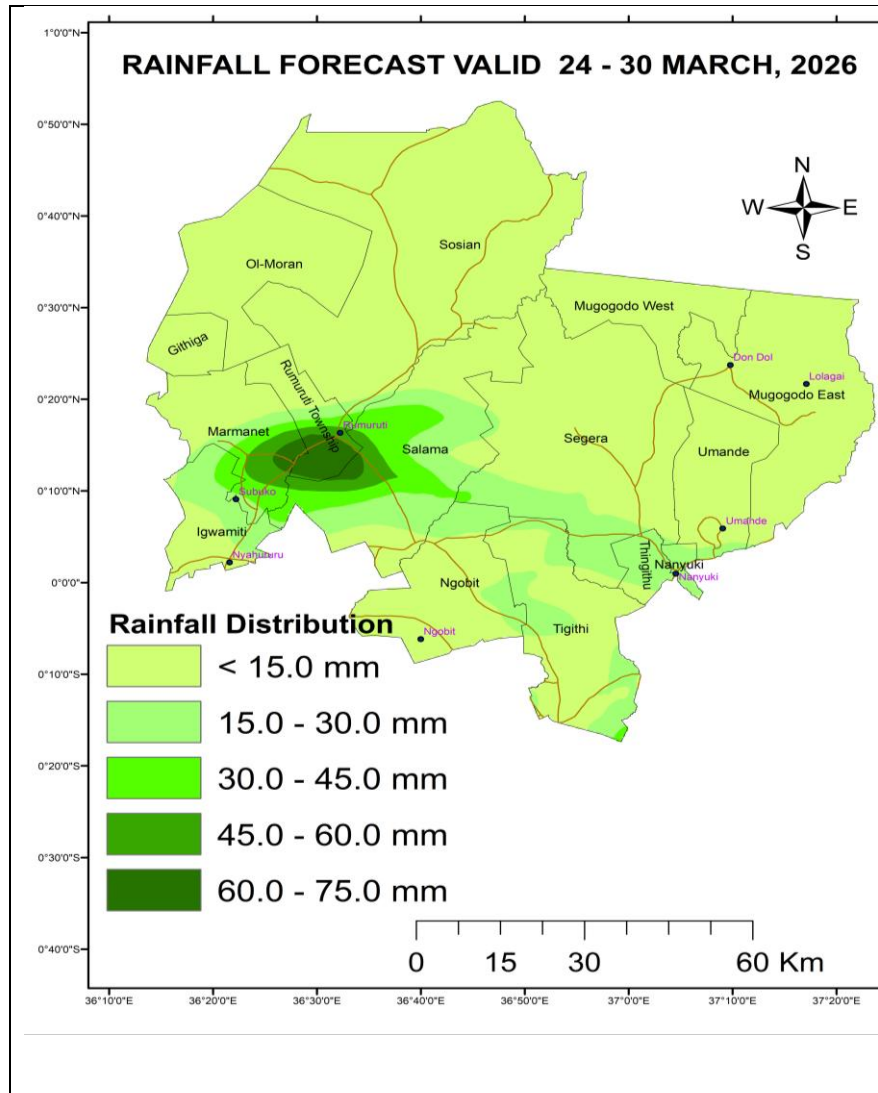
Weather Forecast for 24 - 30 March, 2026 indicates;

- Rainfall is expected to continue over few places occasionally spreading to several places
- Light to moderate showers & thunderstorms are likely mainly in the afternoon, sometimes extending to the night over Few Places
- The Maximum day time temperatures are expected to range between 22 – 30°C and the (Minimum night time temperatures are likely to range 05 - 16°C.
- Minimum Temperatures below 10.0°C are likely around Nyahururu and the regions adjacent to Mt Kenya

Weather review for 17 - 23 March, 2026

- Light to moderate amounts of rainfall amounts were recorded in Mugie, Borana, Mohotetu, Nanyuki, Mutara Orchards, Ol Pejeta, Lamuria and a few other areas
- *Comparing the last two weeks the precipitation amounts were decreased over most places*
- The day time maximum temperatures and the night time minimum temperatures varied from place to place

Expected Rainfall Distribution for the Next Seven Days (24 - 30 March, 2026)



Between **10 - 70 mm** of the cumulated weekly rainfall is predicted as indicated on the adjacent rainfall forecast map

NB: Much of the predicted rainfall is likely in the second half of the forecasting period.

DETAILED WEATHER FORECAST FOR THE NEXT SEVEN DAYS 24 - 30 March, 2026

REGION	TIME	TUESDAY 24/03/2026	WEDNESDAY 25/03/2026	THURSDAY 26/03/2026	FRIDAY 27/03/2026	SATURDAY 28/03/2026	SUNDAY 29/03/2026	MONDAY 30/03/2026
LAIKIPIA NORTH	Morning	Cloudy/Sunny	Cloudy/Sunny	Cloudy/Sunny	Cloudy/Sunny	Cloudy/Sunny	Cloudy/Sunny	Cloudy/Sunny
	Afternoon	Sunny Intervals	Showers over Few Places	Showers over Few Places	Showers & TS over Few Places	Showers over Few Places	Showers & TS over Few Places	Showers over Few Places
	Night	Partly Cloudy	Partly Cloudy	Partly Cloudy	Partly Cloudy	Partly Cloudy	Partly Cloudy	Partly Cloudy
TEMPS	Max/Min	26/14	25/14	25/13	25/14	26/14	25/14	25/14
LAIKIPIA EAST	Morning	Cloudy/Sunny	Cloudy/Sunny	Cloudy/Sunny	Cloudy/Sunny	Cloudy/Sunny	Cloudy/Sunny	Cloudy/Sunny
	Afternoon	Showers over Few Places	Showers over Few Places	Showers & TS over Few Places	Showers over Few Places	Showers over Few Places	Showers & TS over Few Places	Showers over Few Places
	Night	Partly Cloudy	Partly Cloudy	Partly Cloudy	Partly Cloudy	Partly Cloudy	Partly Cloudy	Partly Cloudy
TEMPS	Max/Min	22/13	23/12	23/13	23/12	22/12	23/12	24/12
LAIKIPIA WEST	Morning	Cloudy/Sunny	Cloudy/Sunny	Cloudy/Sunny	Cloudy/Rains	Cloudy/Sunny	Cloudy/Sunny	Cloudy/Sunny
	Afternoon	Showers over Few Places	Showers over Few Places	Showers & TS over Few Places	Showers & TS over Few Places	Showers & TS over Few Places	Showers & TS over Few Places	Showers over Few Places
	Night	Partly/Cloudy	Partly Cloudy	Partly Cloudy	Partly Cloudy	Partly Cloudy	Partly Cloudy	Partly Cloudy
TEMPS	Max/Min	23/11	23/11	22/12	22/10	22/12	23/11	24/09

➤ **TS - Thunderstorms**

COMPARING CUMMULATED RAINFALL AMOUNTS FOR THE LAST TWO WEEKS

STATION	10 – 16 March, 2026	
Mutara Orchards (Office Area)	4.9 mm	22.2 mm
Lamuria Met. Stn.	3.0 mm	10.0 mm
Rumuruti	-	-
Muhotetu CC	5.9 mm	49.7 mm
Sipili	Nil	5.0 mm
Ngárua (Kinamba – AWS)	5.7 mm	-
OI Mysor Sosian	Nil	-
Mugie Conservancy (Centre)	Nil	61.0 mm
Nanyuki MET. Station	Nil	16.3 mm
Kimanjo Pri. Sch AWS	Nil	-
Survey Sec. Sch. AWS	0.3 mm	-
Lokusero Sec. Sch. AWS	6.7 mm	-
Dol Dol Boys Sch. (AWS)	1.1 mm	5.6 mm
Ngobit Police Stn. AWS	0.9 mm	-
Lol-Daiga Stations		
1). Barrier	Nil	14.3 mm
2). Central	Nil	13.7 mm
3). Northern	Nil	0.5 mm
OI Pejeta Rainfall Stations		
1). Kamock	0.5 mm	48.0 mm
2). OPC HQ site	Nil	41.0 mm
3). Golf 3	Nil	48.0 mm
4). Oscar 2 - 5	6.0 mm	59.0 mm
5). Research	14.0 mm	35.0 mm
6). Sirima	10.0 mm	46.5 mm
7). Mutara (Zulu 3)	Nil	52.0 mm
OI Jogi Conservancy Rainfall Stations		
1). Main House	Nil	25.7 mm
2). Marula	Nil	13.5 mm
Borana Conservancy Rainfall Stations		
1). Headquarters	3.0 mm	27.0 mm
2). Waitabit	2.0 mm	103.0 mm

KEY SCIENTIFIC TERMS USED IN THE FORECAST			
RAINFALL CATEGORIES		RAINFALL COVERAGE	
		TERMs	MEANING
< 5 mm	Light	Most places	Between 67% and 100%
5 – 20 mm	Moderate	Several Places	Between 33% and 67%
20 – 50 mm	Heavy	Few places	Below 33%
> 50 mm	Very heavy		

Note; *It's important to follow up this weekly forecast with the 24hr forecast issued daily by the Kenya Meteorological Department.*



David Njiru
 County Director Meteorological Services (CDMS),
Laikipia County