



For further info:

Contact: Daniel M. Mbithi

Mobile No. 0715255171

Email: mbithi_d@yahoo.com

County Director of Meteorological Services Kitui County

Weekly Weather forecast for Kitui County

1.1 PART I: WEEKLY FORECAST FOR THE PERIOD 7TH TO 13TH APRIL 2026 WEATHER FORECAST TABLE

Sub County	Ward	Probable Total weekly amount (mm)	Probable weather							Winds (km/h kilometers per hour)	Temp (Tmax °C & Tmin °C)
			Notes: Light rains <1-5 mm; Moderate rains 5-20 mm; Heavy rains 20-50 mm; Very heavy rains >50 mm								
			Tue	Wed	Thur	Fri	Sat	Sun	Mon		
Mwingi West	Nguutani	<20 mm	Moderate Rain	Moderate Rain	Light Rain	Light Rain	Light Rain	Moderate Rain	Moderate Rain	Easterly 14.4 km/h	Max 26-29 °C Min 18-20 °C
	Kyome/Thaana	<20 mm	Moderate Rain	Moderate Rain	Light Rain	Light Rain	Light Rain	Moderate Rain	Moderate Rain		
	Kiomo/Kyethani	<20 mm	Moderate Rain	Moderate Rain	Light Rain	Light Rain	Light Rain	Moderate Rain	Moderate Rain		
	Migwani	<20 mm	Moderate Rain	Moderate Rain	Light Rain	Light Rain	Light Rain	Moderate Rain	Moderate Rain		
Mwingi North	Ngomeni	<20 mm	Moderate Rain	Moderate Rain	Light Rain	Light Rain	Light Rain	Moderate Rain	Moderate Rain		
	Kyuso	<20 mm	Moderate Rain	Moderate Rain	Light Rain	Light Rain	Light Rain	Moderate Rain	Moderate Rain		

Sub County	Ward	Probable Total weekly amount (mm)	Probable weather Notes: Light rains <1-5 mm; Moderate rains 5-20 mm; Heavy rains 20-50 mm; Very heavy rains >50 mm							Winds (km/h kilometers per hour)	Temp (Tmax °C & Tmin °C)
			Tue	Wed	Thur	Fri	Sat	Sun	Mon	Weekly	Weekly
	Tseikuru	<20 mm	Moderate Rain	Moderate Rain	Light Rain	Light Rain	Light Rain	Moderate Rain	Moderate Rain	Easterly 14.4 km/h	Max 28-32 °C Min 19-22 °C
	Tharaka	<20 mm	Moderate Rain	Moderate Rain	Light Rain	Light Rain	Light Rain	Moderate Rain	Moderate Rain		
	Mumoni	<20 mm	Moderate Rain	Moderate Rain	Light Rain	Light Rain	Light Rain	Moderate Rain	Moderate Rain		
Mwingi Central	Central	<20 mm	Moderate Rain	Moderate Rain	Light Rain	Light Rain	Light Rain	Moderate Rain	Moderate Rain	Easterly 14.4 km/h	Max 27-31 °C Min 18-21 °C
	Kivou	<20 mm	Moderate Rain	Moderate Rain	Light Rain	Light Rain	Light Rain	Moderate Rain	Moderate Rain		
	Mui	<20 mm	Moderate Rain	Moderate Rain	Light Rain	Light Rain	Light Rain	Moderate Rain	Moderate Rain		
	Waita	<20 mm	Moderate Rain	Moderate Rain	Light Rain	Light Rain	Light Rain	Moderate Rain	Moderate Rain		
	Nuu	<20 mm	Moderate Rain	Moderate Rain	Light Rain	Light Rain	Light Rain	Moderate Rain	Moderate Rain		
	Nguni	<20 mm	Moderate Rain	Moderate Rain	Light Rain	Light Rain	Light Rain	Moderate Rain	Moderate Rain		
Kitui South	Ikanga/Kyatune	<20 mm	Moderate Rain	Moderate Rain	Light Rain	Light Rain	Light Rain	Moderate Rain	Moderate Rain	Easterly 14.4 km/h	Max 28-31 °C Min 19-21 °C
	Mutomo/Kibwea	<20 mm	Moderate Rain	Moderate Rain	Light Rain	Light Rain	Light Rain	Moderate Rain	Moderate Rain		
	Kanziko/Simisi	<20 mm	Moderate Rain	Moderate Rain	Light Rain	Light Rain	Light Rain	Moderate Rain	Moderate Rain		
	Mutha	<20 mm	Moderate Rain	Moderate Rain	Light Rain	Light Rain	Light Rain	Moderate Rain	Moderate Rain		

Sub County	Ward	Probable Total weekly amount (mm)	Probable weather Notes: Light rains <1-5 mm; Moderate rains 5-20 mm; Heavy rains 20-50 mm; Very heavy rains >50 mm							Winds (km/h kilometers per hour)	Temp (Tmax °C & Tmin °C)
			Tue	Wed	Thur	Fri	Sat	Sun	Mon	Weekly	Weekly
	Ikutha	<20 mm	Moderate Rain	Moderate Rain	Light Rain	Light Rain	Light Rain	Moderate Rain	Moderate Rain		
	Athi	<20 mm	Moderate Rain	Moderate Rain	Light Rain	Light Rain	Light Rain	Moderate Rain	Moderate Rain		
Kitui East	Chuluni	<20 mm	Moderate Rain	Moderate Rain	Light Rain	Light Rain	Light Rain	Moderate Rain	Moderate Rain	Easterly 14.4 km/h	Max 26-32 °C Min 18-22 °C
	Nzambani	<20 mm	Moderate Rain	Moderate Rain	Light Rain	Light Rain	Light Rain	Moderate Rain	Moderate Rain		
	Mutito/Kaliku	<20 mm	Moderate Rain	Moderate Rain	Light Rain	Light Rain	Light Rain	Moderate Rain	Moderate Rain		
	Zombe/Mwitika	<20 mm	Moderate Rain	Moderate Rain	Light Rain	Light Rain	Light Rain	Moderate Rain	Moderate Rain		
	Voo/Kyamatu	<20 mm	Moderate Rain	Moderate Rain	Light Rain	Light Rain	Light Rain	Moderate Rain	Moderate Rain		
	Endau/Malalani	<20 mm	Moderate Rain	Moderate Rain	Light Rain	Light Rain	Light Rain	Moderate Rain	Moderate Rain		
Kitui Rural	Mbitini	<20 mm	Moderate Rain	Moderate Rain	Light Rain	Light Rain	Light Rain	Moderate Rain	Moderate Rain	Easterly 14.4 km/h	Max 27-28 °C Min 18-20 °C
	Kisasi	<20 mm	Moderate Rain	Moderate Rain	Light Rain	Light Rain	Light Rain	Moderate Rain	Moderate Rain		
	Kyangi	<20 mm	Moderate Rain	Moderate Rain	Light Rain	Light Rain	Light Rain	Moderate Rain	Moderate Rain		
	Yatta/Kwa Vonza	<20 mm	Moderate Rain	Moderate Rain	Light Rain	Light Rain	Light Rain	Moderate Rain	Moderate Rain		
Kitui West	Kauwi	<20 mm	Moderate Rain	Moderate Rain	Light Rain	Light Rain	Light Rain	Moderate Rain	Moderate Rain		

Sub County	Ward	Probable Total weekly amount (mm)	Probable weather							Winds (km/h kilometers per hour)	Temp (Tmax °C & Tmin °C)
			Notes: Light rains <1-5 mm; Moderate rains 5-20 mm; Heavy rains 20-50 mm; Very heavy rains >50 mm								
			Tue	Wed	Thur	Fri	Sat	Sun	Mon		
	Mutonguni	<20 mm	Moderate Rain	Moderate Rain	Light Rain	Light Rain	Light Rain	Moderate Rain	Moderate Rain	Easterly 14.4 km/h	Max 24-28 °C Min 16-19 °C
	Matinyani	<20 mm	Moderate Rain	Moderate Rain	Light Rain	Light Rain	Light Rain	Moderate Rain	Moderate Rain		
	Kithumula/Kwa Mutonga	<20 mm	Moderate Rain	Moderate Rain	Light Rain	Light Rain	Light Rain	Moderate Rain	Moderate Rain		
Kitui Central	Kyangwithya East	<20 mm	Moderate Rain	Moderate Rain	Light Rain	Light Rain	Light Rain	Moderate Rain	Moderate Rain	Easterly 14.4 km/h	Max 25-29 °C Min 17-21 °C
	Kyangwithya West	<20 mm	Moderate Rain	Moderate Rain	Light Rain	Light Rain	Light Rain	Moderate Rain	Moderate Rain		
	Township	<20 mm	Moderate Rain	Moderate Rain	Light Rain	Light Rain	Light Rain	Moderate Rain	Moderate Rain		
	Mulango	<20 mm	Moderate Rain	Moderate Rain	Light Rain	Light Rain	Light Rain	Moderate Rain	Moderate Rain		
	Miambani	<20 mm	Moderate Rain	Moderate Rain	Light Rain	Light Rain	Light Rain	Moderate Rain	Moderate Rain		

1.2 PART II: FURTHER ADVISORIES

SUMMARY ABOUT THE WEEKLY FORECAST:

Sunny intervals are expected during the day, with partly cloudy conditions at night. However, morning rains as well as afternoon and night showers may occur over several places during the forecast period.

Maximum temperatures are expected to range from 22°C - 32°C, while minimum temperatures are expected to range from 16°C - 22°C. Strong north-easterly to south-easterly winds with speeds not exceeding 25 knots (12.86 m/s) are expected to persist in most parts of the County.

Community members advised to inculcate the culture of being “weather – ready”, “climate – smart” and “water – wise” as we navigate the unfamiliar and chaotic environment of a changing climate. This will help them adapt to a changing climate while at the same time mitigating the adverse effects of Climate Change and Variability, hence becoming more resilient to the vagaries of Climate Change.

In light of this weather forecast, farmers are also advised to consult with respective local extension officers from the County Ministry of Agriculture and Livestock at Ward and Sub-county level for more advice on the best farm practices.

NB: Updates on the seasonal performance and key climate drivers, including the Madden–Julian Oscillation (MJO) and tropical cyclones that may occasionally alter the seasonal rainfall performance, will be provided regularly. These updates will offer detailed insights into evolving rainfall patterns, thereby keeping stakeholders informed and supporting timely and informed decision-making.

KEY OF SCIENTIFIC WORDS USED

Rainfall categories	
Range	Category
<5 mm	Light
5 - 20mm	Moderate
20 - 50mm	Heavy
>50mm	Very heavy

Rainfall coverage	
Term	Meaning
Most Places	Between 66% and 100%
Several Places	Between 33% and 66%
Few Places	Below 33%

Note: 1 mm of rainfall is equivalent to 1 litre of rainfall per square meter.

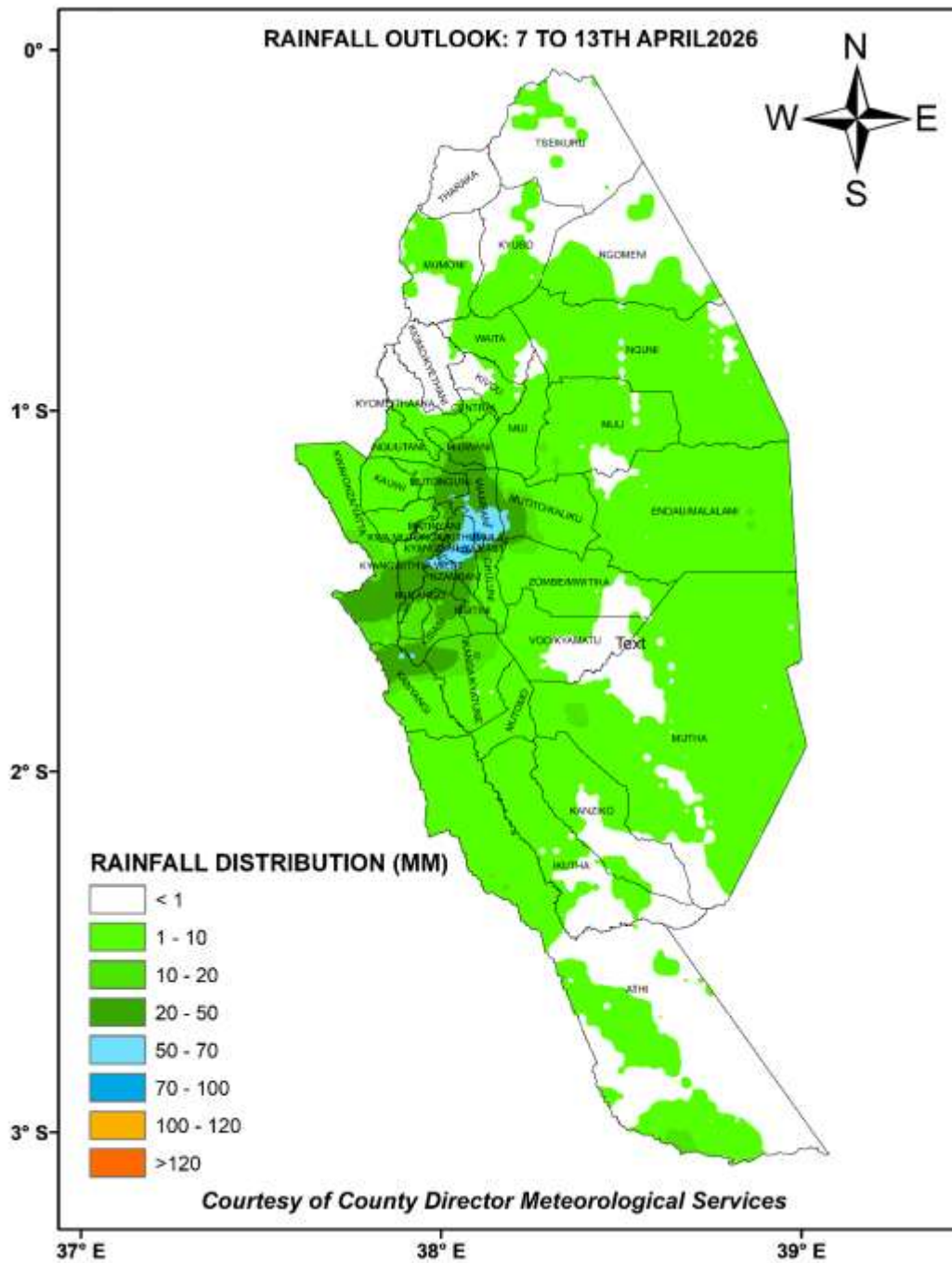
For further information, please contact:



Daniel M. Mbithi
County Director of Meteorological Services
Mobile: 0715255171
Email: mbithi_d@yahoo.com

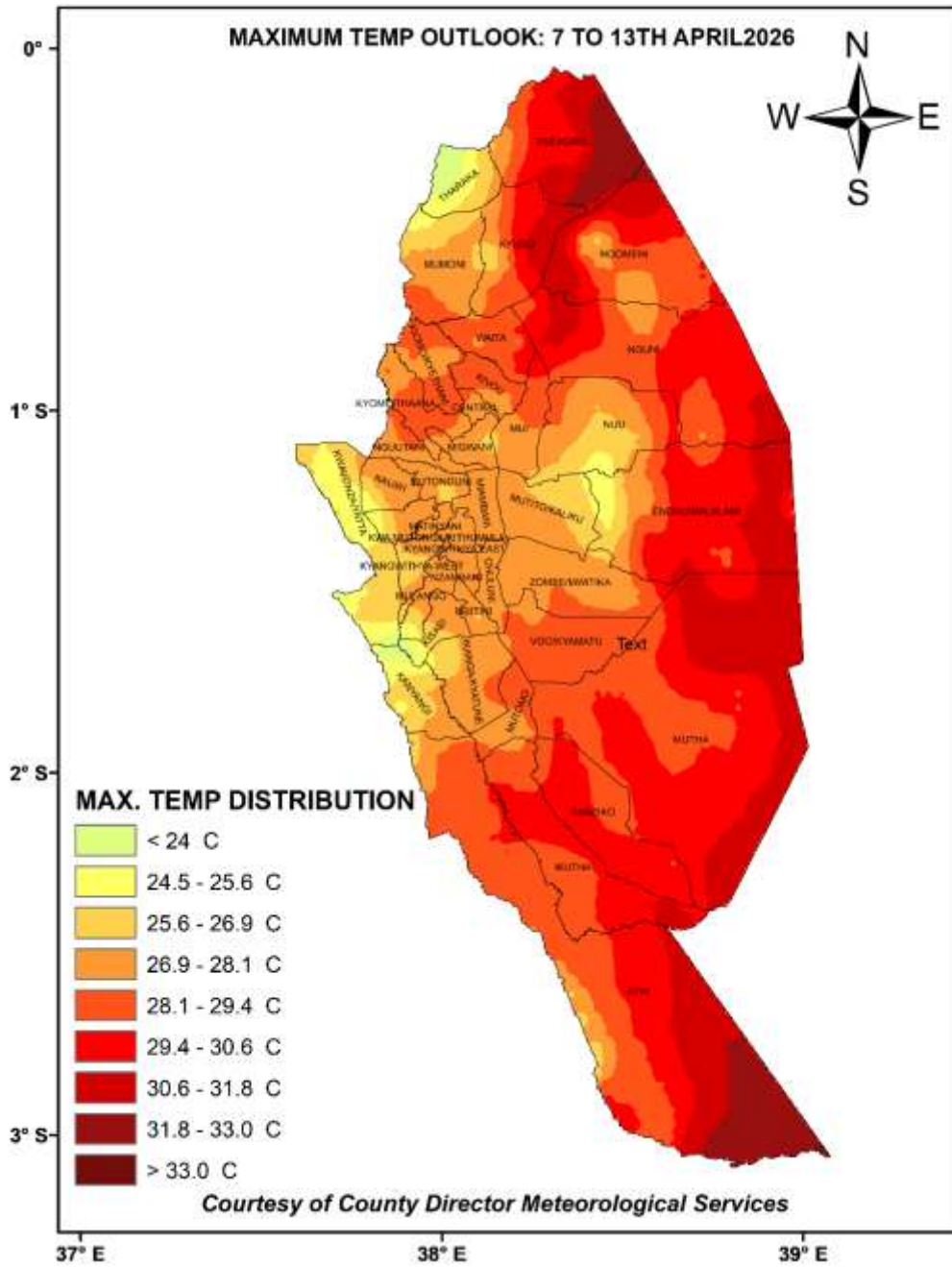
You can find more information about the climate and weather in Kenya on the KMD website <http://www.meteo.go.ke/>

ANNEX I: County Forecast for Seven-Day Total Rainfall for 7th to 13th April, 2026



NB: Forecasted Seven-Day Total Rainfall for 7th to 13th April 2026

ANNEX II: County Forecast for Seven-Day Maximum Temperature for 7th to 13th April, 2026



NB: Daytime (maximum) average temperatures of more than 30°C are expected in some parts of the County

Annex IV: Wards Map of Kitui County

