



**REPUBLIC OF KENYA**

**MINISTRY OF ENVIRONMENT, CLIMATE CHANGE AND FORESTRY  
STATE DEPARTMENT FOR ENVIRONMENT AND CLIMATE CHANGE**

**KENYA METEOROLOGICAL DEPARTMENT**

*Dagoretti Corner, Ngong Road, P. O. Box 30259, 00100 GPO, Nairobi, Kenya*

*Telephone: 254 (0) 20 3867880-7, Fax: 254 (0) 20 3876955/3877373/3867888,*

*E-mail: [director@meteo.go.ke](mailto:director@meteo.go.ke), [info@meteo.go.ke](mailto:info@meteo.go.ke); Website: <http://www.meteo.go.ke>*

**Biometeorology Services**

**WEEKLY BIOMETEOROLOGICAL BULLETIN  
(14<sup>TH</sup> APRIL 2026 – 20<sup>TH</sup> APRIL 2026)**

Ref No: MET/7/58/04-2026

Issue Date: 13/04/2026

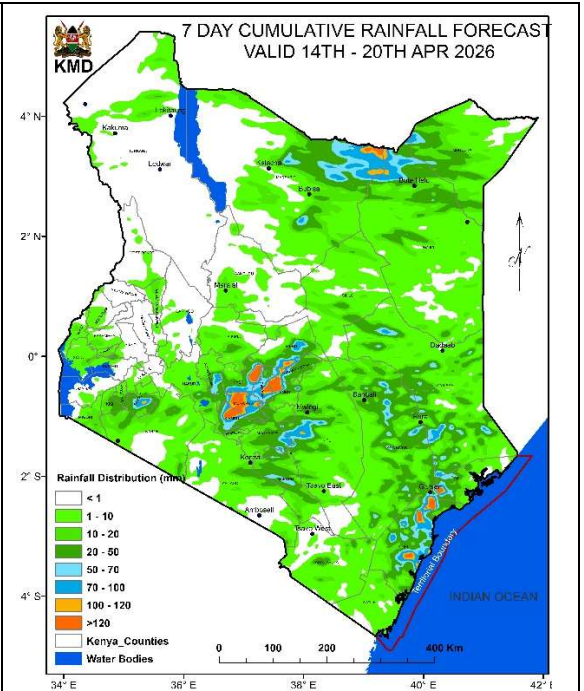
**SUMMARY**

There is a **high risk of flooding** in some parts of Counties such as **Murang'a, Nyeri, Embu, Kirinyaga, Meru, Tharaka Nithi, Bomet, Kilifi, Wajir, Mandera** and areas around **Moyale** in **Marsabit county** with potential outbreaks of **vector-borne** and **waterborne** diseases due to stagnant waters.

**1.0 FORECAST FOR 14<sup>TH</sup> APRIL 2026 – 20<sup>TH</sup> APRIL 2026 AND IMPACTS ON HEALTH**

**Few places** in Counties such as **Murang'a, Nyeri, Embu, Kirinyaga, Meru and Tharaka Nithi** in the **Highlands East of Rift Valley** are expected to receive cumulative rainfall **>50mm** during the forecast period. In the **Northeastern part** of the Country, Cumulative rainfall **>50mm** is expected in **few places** in **Northwest of Marsabit County, North of Wajir County and West of Mandera County**.

**Few places** in the **Highlands West of the Rift Valley** are expected to receive **showers and thunderstorms** in **few places** with Cumulative rainfall **>50mm** expected in some parts of **Bomet county** during the forecast period. In the **South-Eastern Lowlands and the Coastal regions**, **isolated showers of rain** are expected in **Several places** with cumulative rainfall **>50mm** expected in **few places** in **West of Kitui County, South of Tana River County and some parts of Kilifi County**.



Generally, **most parts of the country** are expected to experience days with **isolated moderate rainfall** during the forecast period.

### 1.1.1 Impacts on Health

Hazard/ Risk

High

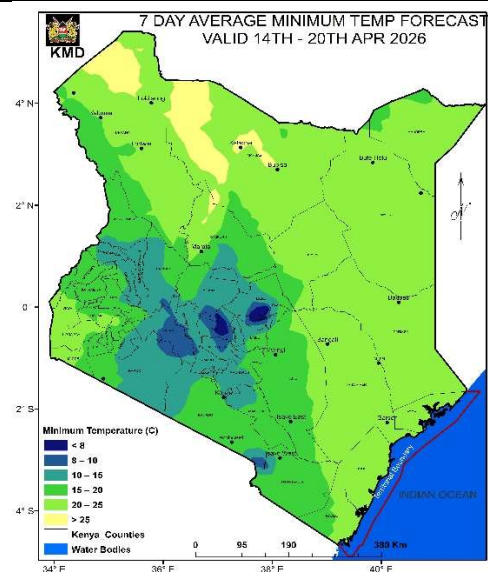
- High risk of **flooding** in low-lying areas and along riverbanks, particularly in **flood-prone** areas of counties such as **Marsabit (Moyale), Murang'a, Nyeri, Embu and Parts of Kiambu**.
- High risk of **Landslides** in **Murang'a County**.
- Moderate risk of **vector-borne diseases** due to enhanced mosquito breeding due to stagnant water potentially leading to higher transmission of **malaria (in Lake Victoria Region, Western and Rift Valley), dengue (in Taita Taveta and Tana River), Rift Valley fever (in Baringo and Marsabit) and Chikungunya (in Mombasa, Kilifi and Kwale)**.
- High risk of **waterborne diseases** such as **cholera, diarrhea and typhoid** due to contamination of water sources, especially in informal settlements in **Moyale, Murang'a, Kiambu, Embu and in parts of Nyeri and Kilifi Counties**
- Possible **disruption of access to essential health services in some flood prone areas in the mentioned counties**.
- Moderate risk of deaths and loss/destruction of properties in the **flood-prone and lightening prone** areas.
- Moderate risk of deaths/destruction of properties in landslides prone counties such as **Murang'a**.

### 1.1.2 Advisory

- Use clean, boiled, or treated water for drinking and cooking.
- Use gumboots and avoid walking bare foot in areas with stagnant waters.
- Avoid landslide prone areas during the rainy period.
- Sleep under treated mosquito nets and drain stagnant water to manage Mosquito Larval sources.
- Vaccinate Livestock for Rift Valley fever control.
- Avoid movement in flooded areas and roads.
- Stay informed on weather updates from the Kenya Meteorological Department to plan for safety.

## 1.2 MINIMUM TEMPERATURES NOT EXCEEDING 10°C

Minimum temperatures are expected to be lower than normal in most parts of the country with temperatures  $\leq 10^{\circ}\text{C}$  expected over some parts of **Nyandarua (Nyahururu), Laikipia**, few places in **Nyeri County** and few places in **South of Meru** and **Tharaka Nithi Counties** during the forecast period.



### 1.2.1 Impacts on Health

Hazard/ Risk

Moderate

- Moderate risk of **Respiratory illnesses** including **common cold, pneumonia, flu, bronchitis, influenza and asthma** in **Nyahururu, Laikipia, South of Meru and North of Tharaka Nithi Counties**.
- Moderate risk of **cardiovascular complications**, particularly among children, the elderly and individuals with chronic illnesses.
- Children, the elderly, and individuals with chronic illnesses are at higher risk.

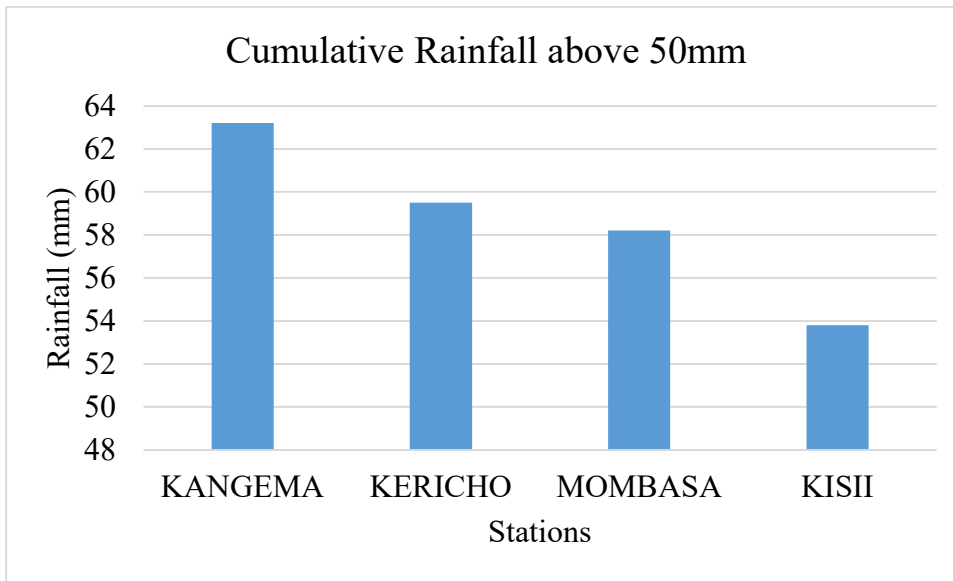
### 1.2.2 Advisory

- Dress warmly and limit exposure to cold, especially for the vulnerable populations.

## 2.0 REVIEW FOR PREVIOUS WEEK (6<sup>TH</sup> APRIL 2026– 12<sup>TH</sup> APRIL 2026)

### 2.1 Stations with Cumulative Rainfall above 50mm

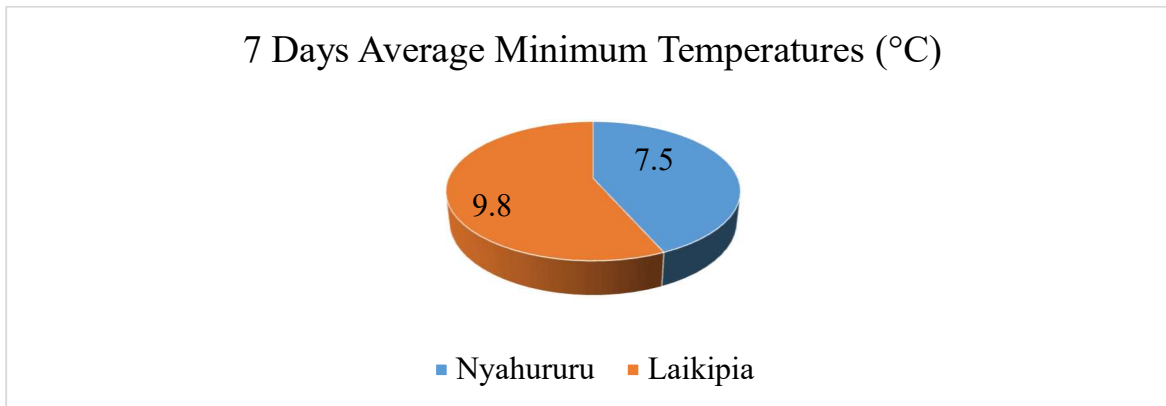
Several stations recorded cumulative rainfall exceeding 50 mm during the review period, as shown in **Figure 2.1**



**Figure 2.1: Stations with Cumulative Rainfall above 50mm**

**2.2 Stations with 7 Days average minimum Temperatures less than 10°C**

Some stations recorded 7-day average minimum temperatures below 10°C during the reporting period, as shown in **Figure 2.2**.



**Figure 2.2: Stations with average minimum Temperatures less than 10°C**

**NB:** Residents are encouraged to take proactive measures to safeguard themselves and their communities against the anticipated weather conditions.

Stay Safe, Stay Informed.

**For:** Ag DIRECTOR OF METEOROLOGICAL SERVICES