



MINISTRY OF ENVIRONMENT, CLIMATE CHANGE AND FORESTRY

STATE DEPARTMENT FOR ENVIRONMENT AND CLIMATE CHANGE

KENYA METEOROLOGICAL DEPARTMENT

Our Ref: MET/Laikipia County/Forecast/04/26

Date issued: 13 April, 2026

LAIKIPIA COUNTY WEEKLY WEATHER FORECAST VALID 14 - 20 APRIL, 2026

SUMMARY

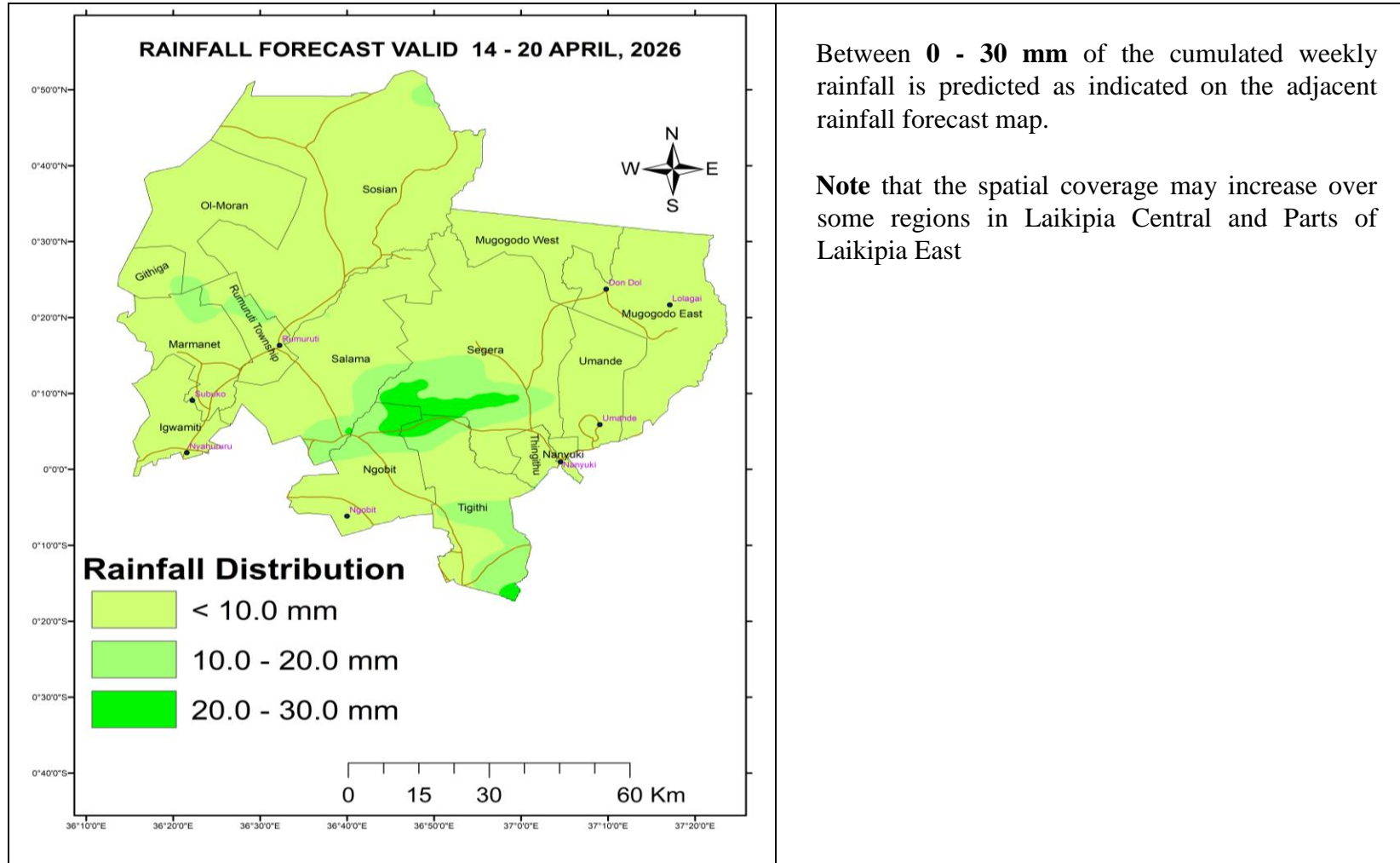
Weather Forecast for 14 - 20 April, 2026 indicates;

- Light to moderate amounts of Rainfall expected over several places
- Morning clouds with rains over Few Places, giving way to sunny intervals, showers & thunderstorms over Few Places in the afternoon
- The Maximum day time temperatures are expected to range between 22 – 30°C and the (Minimum night time temperatures are likely to range 05 - 16°C.
- Minimum Temperatures below 10.0°C are likely around Nyahururu and the regions adjacent to Mt Kenya

Weather review 07 - 13 April, 2026

- Light to moderate amounts of rainfall amounts were recorded in Ol Pejeta, Ol Jogi, Nanyuki, Lokusero, Lamuria, Mutara Orchards, Thome, Mohotetu and a few other areas
- *Comparing the last two weeks the precipitation amounts were maintained over several places*
- The day time maximum temperatures and the night time minimum temperatures varied from place to place

Expected Rainfall Distribution for the Next Seven Days (14 - 20 April, 2026)



Between **0 - 30 mm** of the cumulated weekly rainfall is predicted as indicated on the adjacent rainfall forecast map.

Note that the spatial coverage may increase over some regions in Laikipia Central and Parts of Laikipia East

DETAILED WEATHER FORECAST FOR THE NEXT SEVEN DAYS 14 - 20 April, 2026

REGION	TIME	TUESDAY 14/04/2026	WEDNESDAY 15/04/2026	THURSDAY 16/04/2026	FRIDAY 17/04/2026	SATURDAY 18/04/2026	SUNDAY 19/04/2026	MONDAY 20/04/2026
LAIKIPIA NORTH	Morning	Cloudy/Sunny	Cloudy/ Sunny	Cloudy/Sunny	Cloudy/Sunny	Cloudy/ Sunny	Cloudy/Sunny	Cloudy/Sunny
	Afternoon	Showers & TS over Few Places	Showers & TS over Few Places	Showers over Few Places	Showers & TS over Few Places	Showers over Few Places	Showers over Few Places	Showers over Few Places
	Night	Partly Cloudy	Partly Cloudy	Partly Cloudy	Partly Cloudy	Partly Cloudy	Partly Cloudy	Partly Cloudy
TEMPS	Max/Min	26/14	27/14	27/14	28/15	28/14	24/13	25/14
LAIKIPIA EAST	Morning	Cloudy/Sunny	Cloudy/Sunny	Cloudy/Sunny	Cloudy/Sunny	Cloudy/Sunny	Cloudy/Sunny	Cloudy/Sunny
	Afternoon	Showers & TS over Few Places	Showers & TS over Few Places	Showers over Few Places	Showers over Few Places	Showers over Few Places	Showers over Few Places	Showers over Several Places
	Night	Partly Cloudy	Partly Cloudy	Partly Cloudy	Partly Cloudy	Partly Cloudy	Partly Cloudy	Partly Cloudy
TEMPS	Max/Min	23/14	23/14	23/12	24/12	24/12	23/12	24/12
LAIKIPIA WEST	Morning	Cloudy/Sunny	Cloudy/ Sunny	Cloudy/Sunny	Cloudy/Sunny	Cloudy/Sunny	Cloudy/Sunny	Cloudy/Sunny
	Afternoon	Showers over Few Places	Showers over Few Places	Showers & TS over Few Places	Showers over Several Places	Showers over Few Places	Showers over Few Places	Showers over Several Places
	Night	Partly/ Cloudy	Partly Cloudy	Partly Cloudy	Partly Cloudy	Partly Cloudy	Partly Cloudy	Partly Cloudy
TEMPS	Max/Min	22/10	22/12	26/09	27/12	25/12	27/12	27/09

➤ **TS - Thunderstorms**

COMPARING CUMMULATED RAINFALL AMOUNTS FOR THE LAST TWO WEEKS

STATION	31 March – 06 April, 2026	07 – 13 April, 2026
Mutara Orchards (Office Area)	5.1 mm	18.5 mm
Lamuria Met. Stn.	12.3 mm	16.5 mm
Rumuruti	-	-
Muhotetu CC	Nil	3,2 mm
Sipili	4.0 mm	
Ngárua (Kinamba – AWS)	0.6 mm	1.5 mm
OI Mysor Sosian	-	-
Mugie Conservancy (Centre)	1.5 mm	Nil
Nanyuki MET. Station	28.3 mm	17.1 mm
Kimanjo Pri. Sch AWS	0.8 mm	0.3 mm
Survey Sec. Sch. AWS	3.2 mm	3.0 mm
Lokusero Sec. Sch. AWS	2.6 mm	9.2 mm
Dol Dol Boys Sch. (AWS)	21.9 mm	7.6 mm
Ngobit Police Stn. AWS	Nil	Nil
Lol-Daiga Stations		
1). Barrier	Nil	-
2). Central	Nil	-
3). Northern	Nil	-
OI Pejeta Rainfall Stations		
1). Kamock	17.0 mm	23.0 mm
2). OPC HQ site	41.0 mm	21.0 mm
3). Golf 3	30.0 mm	15.0 mm
4). Oscar 2 - 5	17.5 mm	38.0 mm
5). Research	10.6 mm	28.1 mm
6). Sirima	56.4 mm	9.0 mm
7). Mutara (Zulu 3)	15.5 mm	13.5 mm
OI Jogi Conservancy Rainfall Stations		
1). Main House	Nil	1.5 mm
2). Marula	40.0 mm	1.0 mm
Borana Conservancy Rainfall Stations		
1). Headquarters	Nil	6.0 mm
2). Waitabit	Nil	3.0 mm

KEY SCIENTIFIC TERMS USED IN THE FORECAST			
RAINFALL CATEGORIES		RAINFALL COVERAGE	
		TERMs	MEANING
< 5 mm	Light	Most places	Between 67% and 100%
5 – 20 mm	Moderate	Several Places	Between 33% and 67%
20 – 50 mm	Heavy	Few places	Below 33%
> 50 mm	Very heavy		

Note; *It's important to follow up this weekly forecast with the 24hr forecast issued daily by the Kenya Meteorological Department.*



David Njiru
 County Director Meteorological Services (CDMS),
Laikipia County