



REPUBLIC OF KENYA
MINISTRY OF ENVIRONMENT, CLIMATE CHANGE AND FORESTRY
State Department for Environment & Climate Change
KENYA METEOROLOGICAL DEPARTMENT

Dagoretti Corner, Ngong Road, P. O. Box 30259, 00100 GPO, Nairobi, Kenya

Telephone: 254 (0) 20 3867880-7, 0724 255 153/4

E-mail: director@meteo.go.ke, info@meteo.go.ke **Website:** <http://www.meteo.go.ke>

Our Ref: MET/7/356

Date: 20th April 2026

WEEKLY WEATHER FORECAST FOR 21ST TO 27TH APRIL 2026
&
REVIEW FOR 13TH TO 19TH APRIL 2026

SUMMARY

Weather Forecast for 21st to 27th April 2026

- Rainfall is expected to continue in some parts of the Highlands East and West of the Rift Valley, the South Rift Valley, the Southeastern Lowlands, the Coast and Northeastern parts of Kenya. Isolated heavy rainfall events are likely to occur in some parts of these regions.

Weather Review for 13th to 19th April 2026

- Rainfall was recorded in several parts of the country.
- Daytime (maximum) temperatures decreased over most parts of the country except Voi, Lamu, Suba among others which had a decrease.
- Night-time (minimum) temperatures increased in several parts of the country except a few stations like Malindi, Wajir and Mandera among others, that recorded a decrease.

1.0 WEATHER FORECAST FOR 21st TO 27th APRIL 2026

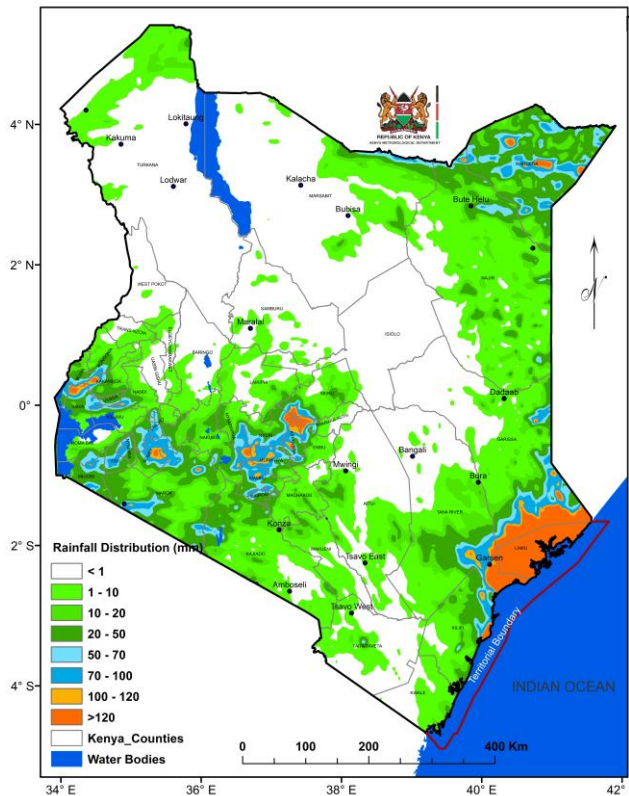


Figure 1: Forecasted Seven-Day Total Rainfall for 21st to 27th April 2026

Rainfall is expected to continue in some parts of the Highlands East and West of the Rift Valley, the South Rift Valley, the Southeastern Lowlands, the Coast and Northeastern parts of Kenya (Figure 1). Isolated heavy rainfall events are likely to occur in some parts of these regions.

Daytime (maximum) average temperatures of more than 30°C are expected in the Coast, the Southeastern lowlands, Northeastern and Northwestern Kenya (Figure 2).

Night-time (minimum) average temperatures are expected to be less than 10°C in some parts of the Highlands East of the Rift Valley, the Central Rift Valley and in the vicinity of Mt. Kilimanjaro (Figure 3).

WEEKLY FORECAST

Follow us on X and IG: x.com/MeteoKenya and Facebook: fb.com/KenyaMeteorologicalDepartment

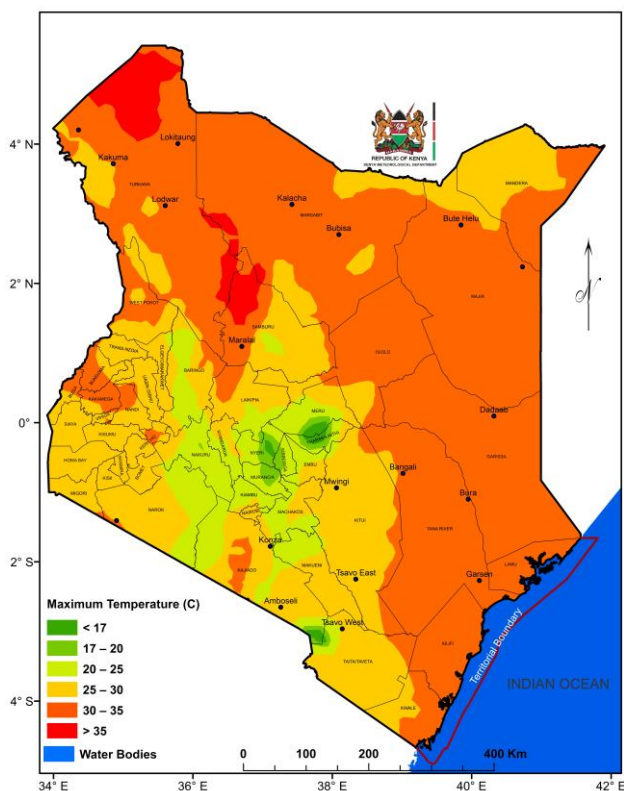


Figure 2: Forecasted Average Maximum Temperatures for 21st to 27th April 2026

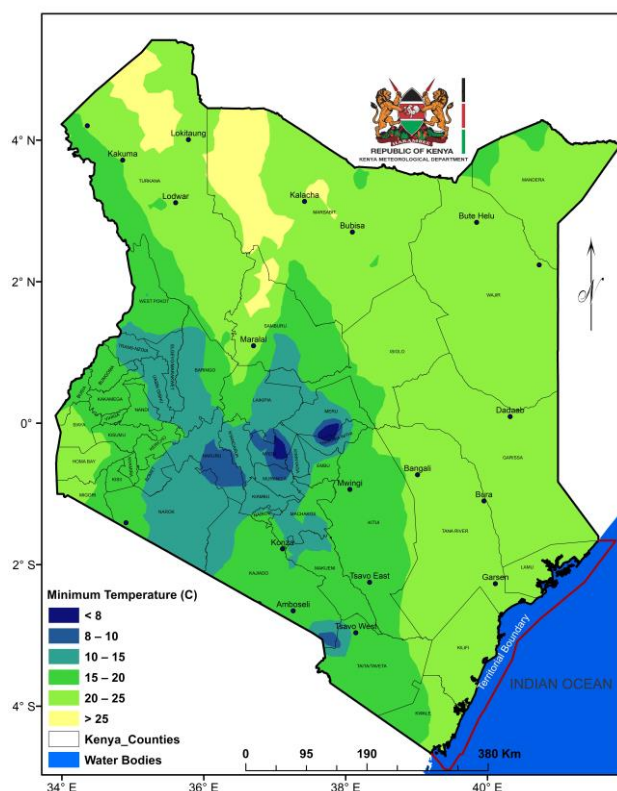


Figure 3: Forecasted Average Minimum Temperatures for 21st to 27th April 2026

1.1 DETAILED REGIONAL RAINFALL FORECAST FOR 21ST TO 27TH APRIL 2026

1.1.1 *The Highlands West of the Rift Valley, the Lake Victoria Basin and the Rift Valley (Nandi, Kakamega, Vihiga, Bungoma, Siaya, Busia, Baringo, Nakuru, Trans-Nzoia, Uasin-Gishu, Elgeyo-Marakwet, West-Pokot, Kisii, Nyamira, Kericho, Bomet, Kisumu, Homabay, Migori and Narok Counties):*

Morning rains are likely to occur over few places. Afternoon and night showers and thunderstorms expected over few places occasionally spreading to several places.

1.1.2 *North-western Kenya (Turkana and Samburu Counties):*

Sunny intervals are expected during the day, with partly cloudy conditions at night. However, morning rains, afternoon and night showers may occur over few places.

1.1.3 *The Highlands East of the Rift Valley (Nyandarua, Laikipia, Nyeri, Kirinyaga, Murang'a, Kiambu, Meru, Embu, Tharaka-Nithi and Nairobi Counties):*

Mornings are likely to be cloudy, with occasional rains over few places, giving way to sunny intervals. Afternoon and night showers are expected over few places occasionally spreading to several places.

1.1.4 *North-eastern Kenya (Marsabit, Mandera, Wajir, Garissa and Isiolo Counties):*

Morning rains as well as afternoon and night showers are likely to occur over few places.

1.1.5 *The South-eastern lowlands (Machakos, Kitui, Makueni, Kajiado and Taita-Taveta Counties as well as the inland parts of Tana-River County):*

Sunny intervals are expected during the day, with partly cloudy conditions at night.

However, morning rains as well as afternoon and night showers may occasionally occur over few places occasionally spreading to several places.

1.1.6 *The Coast (Mombasa, Kilifi, Lamu and Kwale Counties as well as the Tana Delta):*

Morning, afternoon and night showers are likely to occur over few places spreading to several places.

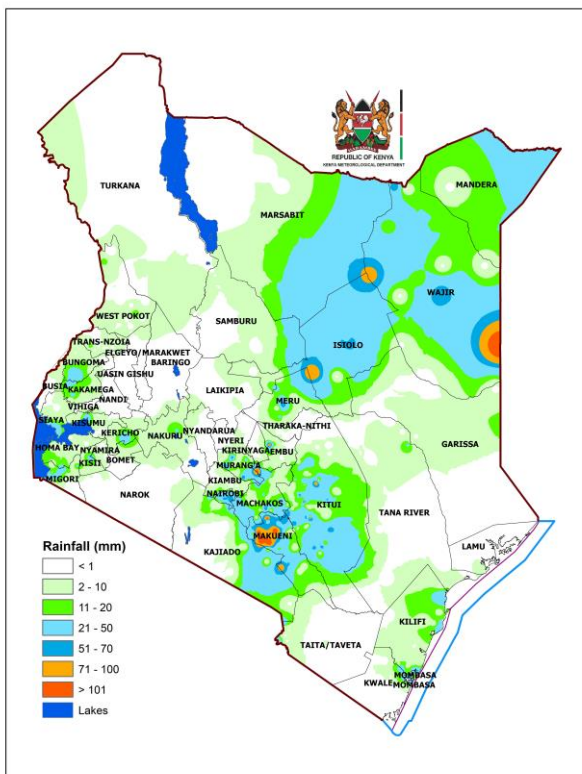
1.2 DETAILED TEMPERATURE FORECAST FOR 21ST TO 27TH APRIL 2026

Expected maximum and minimum temperatures for selected cities and towns are shown in Table 1.

TABLE 1: FORECASTED MAXIMUM AND MINIMUM TEMPERATURES FOR SELECTED CITIES AND TOWNS								
CITY/TOWN	MAX (°C)	MIN (°C)	CITY/TOWN	MAX (°C)	MIN (°C)	CITY/TOWN	MAX (°C)	MIN (°C)
LODWAR	37.0	24.0	KISUMU	29.0	19.0	THIKA	27.0	17.0
MARSABIT	23.0	18.0	SUBA	30.0	20.0	MACHAKOS	25.0	16.0
MOYALE	27.0	20.0	NAKURU	24.0	14.0	MAKINDU	29.0	20.0
GARISSA	36.0	26.0	NAROK	25.0	14.0	KITUI	28.0	19.0
WAJIR	33.0	24.0	LAIKIPIA	25.0	13.0	VOI	34.0	21.0
MANDERA	35.0	26.0	NYAHURURU	22.0	11.0	LAMU	34.0	25.0
KITALE	26.0	14.0	KANGEMA	24.0	16.0	MALINDI	32.0	25.0
KAKAMEGA	30.0	17.0	NYERI	24.0	15.0	MSABAHA	31.0	25.0
ELDORET	23.0	14.0	EMBU	26.0	16.0	MTWAPA	32.0	25.0
KERICHO	25.0	12.0	MERU	25.0	16.0	MOMBASA	32.0	25.0
KISII	25.0	16.0	NAIROBI	26.0	16.0			

2.0 WEATHER REVIEW FOR 13TH TO 19TH APRIL 2026

2.1 Rainfall Review



Rainfall was recorded over several parts of the country (Figures 4 and 5).

The highest seven-day rainfall total (162.1mm) was recorded at Mtwapa Meteorological Station in Kilifi County.

The same station recorded the highest amount of rainfall within 24-hours: 115.4mm on 19th April 2026. Comparing the 6th to 12th April and the 13th to 19th April 2026 review periods, it is noted that rainfall amounts increased over most parts of the country.

Figure 4: Observed Seven-Day Total Rainfall for 13th to 19th April 2026

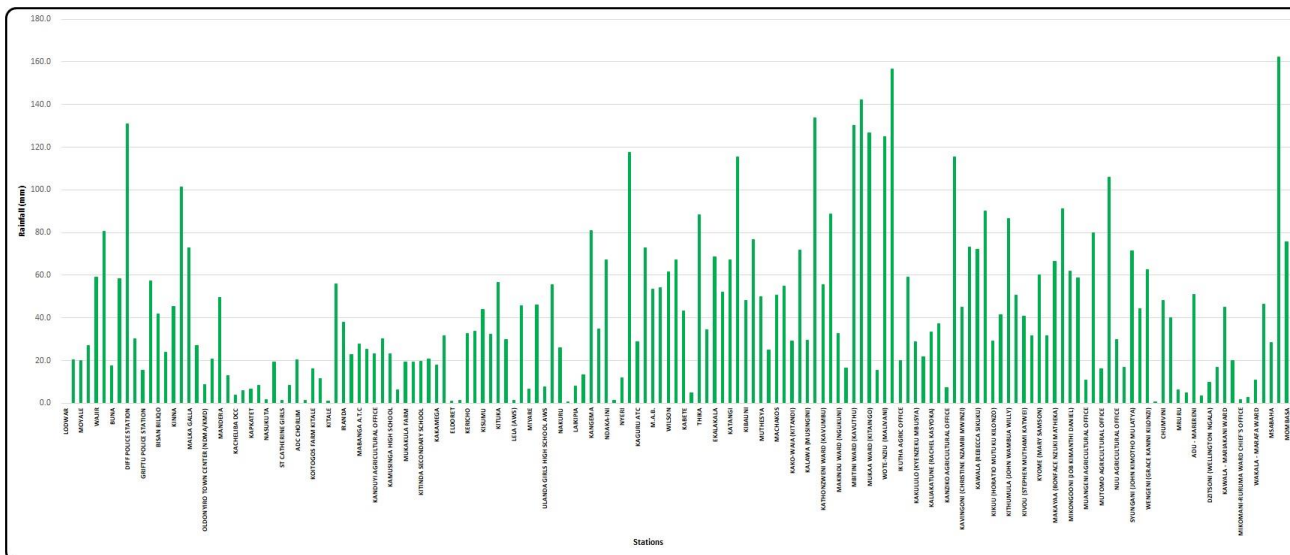


Figure 5: Observed Seven-Day Total Rainfall (per Station) for 13th to 19th April 2026

2.2 Temperature Review

Comparing the 6th April to 12th April and the 13th to 19th April 2026 review periods, it is noted that daytime (maximum) temperatures decreased over most parts of the country except Voi, Lamu, Suba among others which had a decrease. Night-time (minimum) temperatures increased in several parts of the country except a few stations like Malindi, Wajir and Manderu among others, that recorded a decrease.

Lodwar Meteorological Station recorded the highest daily maximum temperature: 37.3°C on 16th and 18th April 2026 while Nyahururu Meteorological Station recorded the lowest daily minimum temperature: 8.6°C on 19th April 2026. The same stations recorded the highest seven-day average maximum temperature and the lowest seven-day average minimum temperature: 36.8°C and 10.6°C respectively (Figure 6).

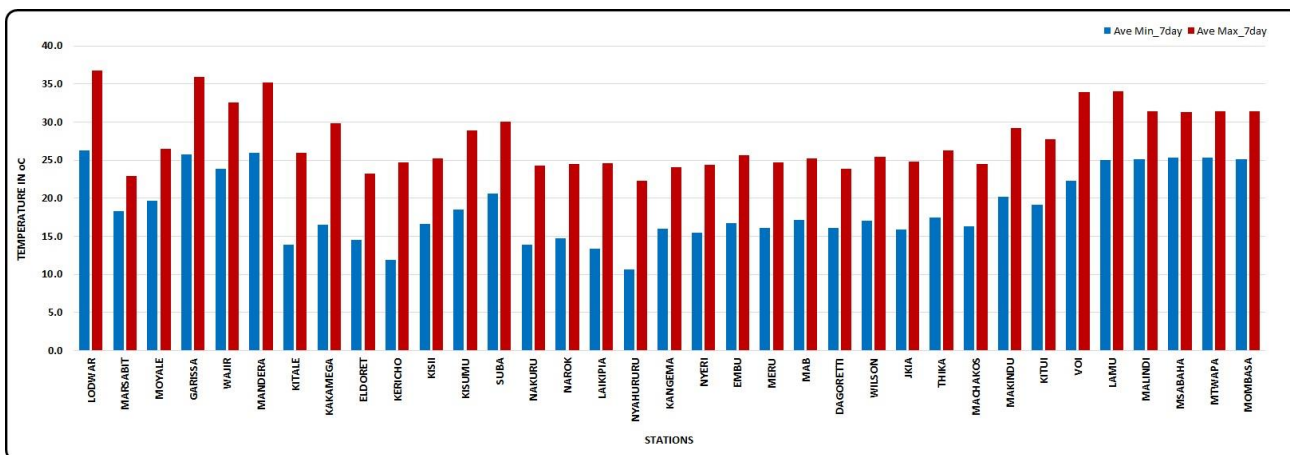


Figure 6: Seven-Day Average Maximum and Minimum Temperatures for 13th to 19th April 2026

N.B: This forecast should be used in conjunction with the daily (24-hour) and five-day forecasts issued by this Department. County specific forecasts are available from the offices of respective County Directors of Meteorological Services.

Edward Muriuki
Ag. DIRECTOR, KENYA METEOROLOGICAL DEPARTMENT

APPENDIX I: INTERPRETATION OF TERMS USED

Term	Rainfall Amount (24 hrs.)	Description
Light	< 5 mm	Gentle rain, drizzle.
Moderate	5–20 mm	Steady, noticeable rain.
Heavy	21–50 mm	Intense rain, possible thunder.
Very Heavy	> 50 mm	Prolonged rain, high intensity.

Term	Area Affected	Description
Few places	< 33%	Rain in a small portion of the region.
Several places	33% to 66%	Rain in multiple but not most parts of the region.
Most places	> 66%	Rain in nearly all parts of the region.

Term	Area Affected	Description
Isolated	Less than 25%	Very few areas affected.
Scattered	25–50%	Several, but not most, areas affected.
Numerous	51–70%	Many areas affected.
Widespread	Over 70%	Almost all areas affected.

Term	Time Coverage (%)	Meaning
Occasional	Less than 25%	Happens rarely or a few times.
Intermittent	25% – 50%	Starts and stops, comes and goes.
Frequent	51% – 75%	Occurs regularly.
Very Frequent / Common	More than 75%	Happens almost all the time.

Term	Probability of Occurrence	Description
Possible	10–30%	There is low confidence.
Chance of/ May	31–50%	There is moderate confidence.
Likely	51–75%	The event is more probable than not.
Expected	76–90%	There is high confidence.
Very Likely	91–99%	There is very high confidence. Almost certain.
Certain	100%	The event is guaranteed to occur.