



**REPUBLIC OF KENYA**  
**MINISTRY OF ENVIRONMENT, CLIMATE CHANGE AND FORESTRY**  
**STATE DEPARTMENT FOR ENVIRONMENT AND CLIMATE CHANGE**  
**KENYA METEOROLOGICAL DEPARTMENT**

Dagoretti Corner, Ngong Road, P. O. Box 30259, 00100 GPO, Nairobi, Kenya  
**Telephone:** 254 (0) 20 3867880-7, **Fax:** 254 (0) 20 3876955/3877373/3867888,  
**E-mail:** [director@meteo.go.ke](mailto:director@meteo.go.ke), [info@meteo.go.ke](mailto:info@meteo.go.ke); **Website:** <http://www.meteo.go.ke>  
**Biometeorology Services**

**WEEKLY BIOMETEOROLOGICAL BULLETIN**  
**(21<sup>ST</sup> APRIL 2026 – 27<sup>TH</sup> APRIL 2026)**

Ref No: MET/7/58/04-2026

Issue Date: 20/04/2026

**SUMMARY**

There is a **high risk of flooding** in some parts of Counties such as **Lamu, Kilifi, Mombasa, Tana River, Mandera, Murang'a, Nyeri, Embu, Kirinyaga, Meru, Tharaka Nithi, Bomet** and **Southern parts of Garissa County** with potential outbreaks of **vector-borne and waterborne diseases** due to stagnant waters.

**1.0 FORECAST FOR 21<sup>ST</sup> APRIL 2026 – 27<sup>TH</sup> APRIL 2026 AND IMPACTS ON HEALTH**

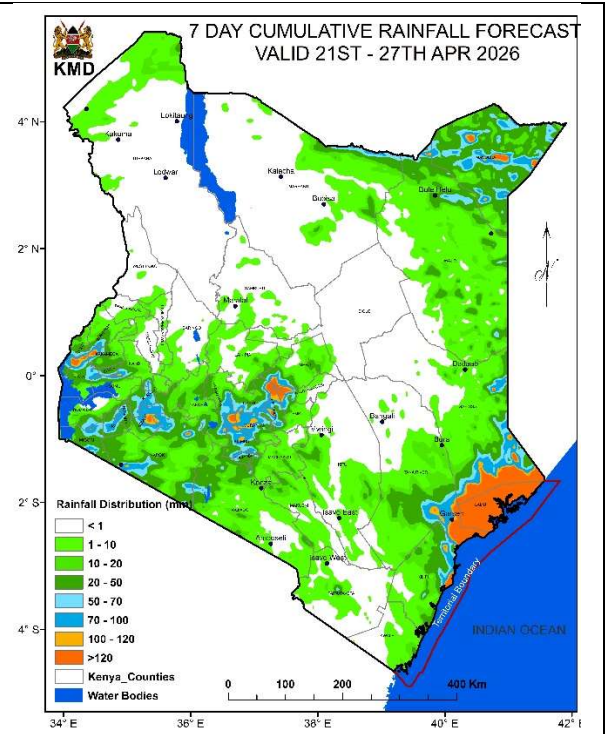
**Coastal region is expected to receive showers in Several places with cumulative rainfall >50mm expected in several places in counties such as Lamu, Southeast of Tana River, Kilifi and Mombasa.**

**In the Northeastern, Cumulative rainfall >50mm is expected in several places in Mandera County and Southern parts of Garissa County.**

**Few places in Counties like Murang'a, Nyeri, Embu, Kirinyaga, Meru, Nyandarua and Tharaka Nithi in the Highlands East of Rift Valley are expected to receive cumulative rainfall >50mm during the forecast period.**

**Few places in the Highlands West of the Rift Valley are expected to receive showers and thunderstorms with Cumulative rainfall >50mm expected in some parts of Bomet, Siaya and Kakamega counties during the forecast period.**

**Most parts of the country are expected to experience days with isolated moderate rainfall during the forecast period.**



### 1.1.1 Impacts on Health

Hazard/ Risk

High

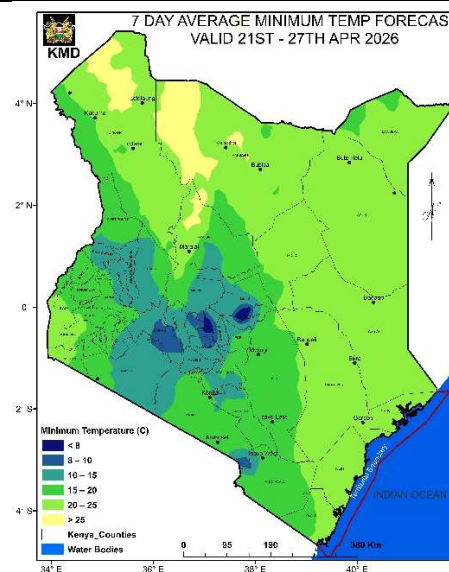
- **High risk of flooding** at the **Coast** in low-lying areas and along riverbanks, particularly in **flood-prone** areas of counties such as **Lamu, Kilifi, Southeast Tana River and Mombasa**.
- **Moderate risk of flooding** in low-lying areas and along riverbanks, particularly in **flood-prone** areas of counties such as **Mandera and Southern parts of Garissa**.
- **High Risk of Anthrax** outbreak in counties such as **Vihiga, Siaya, Kakamega, Meru and Murang'a**.
- High risk of **vector-borne diseases** due to enhanced mosquito breeding due to stagnant water potentially leading to higher transmission of **Chikungunya (in Mombasa, Kilifi and Kwale) malaria (in Lake Victoria Region, Western and Rift Valley), dengue (in Taita Taveta and Tana River) and Rift Valley fever (in Baringo and Marsabit)**.
- High risk of **waterborne diseases** such as **cholera, diarrhea and typhoid** due to contamination of water sources, especially in informal settlements in **Mombasa, Lamu, Kilifi, Embu** and in **southern parts of Garissa, Tana River and Kilifi Counties**
- Possible **disruption of access to essential health services in some flood prone areas in the mentioned counties**.
- Moderate risk of deaths and loss/destruction of properties in the **flood-prone and lightning prone** areas.

### 1.1.2 Advisory

- Use clean, boiled, or treated water for drinking and cooking.
- Use gumboots and avoid walking bare foot in areas with stagnant waters.
- Vaccinate Livestock for Anthrax and Rift Valley Fever control.
- Avoid consuming meat from animals that die suddenly, instead purchase only inspected meat from licensed butchers to stay safe from Anthrax.
- Sleep under treated mosquito nets and drain stagnant water to manage Mosquito Larval sources.
- Avoid movement in flooded areas and roads.
- Avoid landslide prone areas during the rainy period.
- Stay informed on weather updates from the Kenya Meteorological Department to plan for safety.

## 1.2 MINIMUM TEMPERATURES NOT EXCEEDING 10°C

Minimum temperatures are expected to be lower than normal in most parts of the country with temperatures  $\leq 10^{\circ}\text{C}$  expected over some parts of **Nyandarua (Nyahururu) County** during the forecast period.



### 1.2.1 Impacts on Health

Hazard/ Risk

Moderate

- Moderate risk of **Respiratory illnesses** including **common cold, pneumonia, flu, bronchitis, influenza and asthma in Nyahururu.**
- Moderate risk of **cardiovascular complications**, particularly among children, the elderly and individuals with chronic illnesses.
- Children, the elderly, and individuals with chronic illnesses are at higher risk.

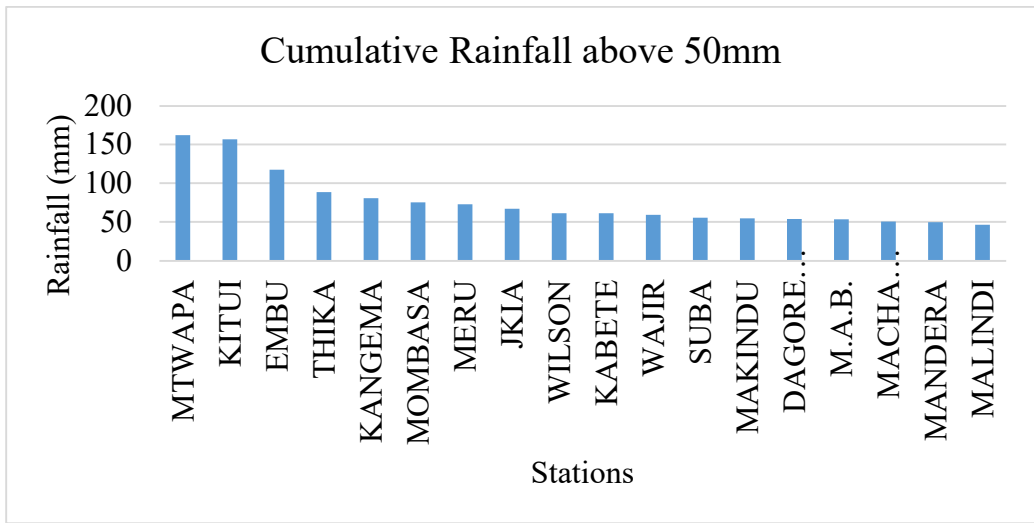
### 1.2.2 Advisory

- Dress warmly and limit exposure to cold, especially for the vulnerable populations.

## 2.0 REVIEW FOR PREVIOUS WEEK (13<sup>TH</sup> APRIL 2026– 19<sup>TH</sup> APRIL 2026)

### 2.1 Stations with Cumulative Rainfall above 50mm

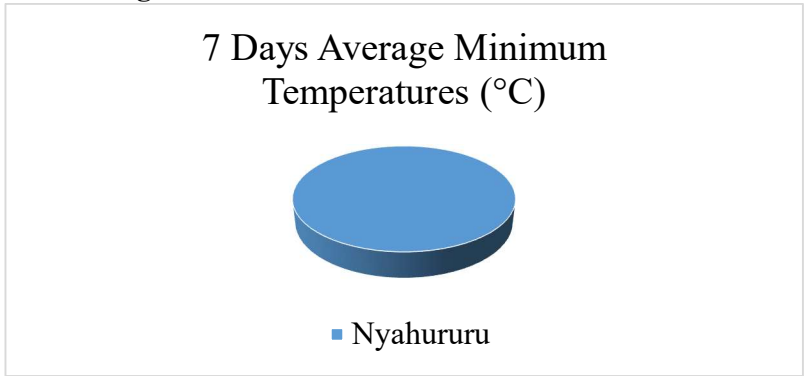
Several stations recorded cumulative rainfall exceeding 50 mm during the review period, as shown in **Figure 2.1**



**Figure 2.1: Stations with Cumulative Rainfall above 50mm**

**2.2 Stations with 7 Days average minimum Temperatures less than 10°C**

Some stations recorded 7-day average minimum temperatures below 10°C during the reporting period, as shown in **Figure 2.2**.



**Figure 2.2: Stations with average minimum Temperatures less than 10°C**

**NB:** Residents are encouraged to take proactive measures to safeguard themselves and their communities against the anticipated weather conditions.

Stay Safe, Stay Informed.

**For:** Ag DIRECTOR OF METEOROLOGICAL SERVICES