



KMD 10 DAY AGROMETEOROLOGICAL BULLETIN



Ref: MET/8/001/1

Issue No: 11/2026

Date:22/04/2026

DEKAD 11 PERIOD:21ST – 30TH APRIL 2026.

1.0 HIGHLIGHTS

Rainfall is expected to increase over the Coastal region and parts of the Northeastern and Southeastern Lowlands, accompanied by gusty winds exceeding 25 knots (12.5 m/s) during the dekad. These may result in localized waterlogging in low-lying areas and wind-related crop damage, potentially affecting crop growth and yields. Farmers are advised to ensure proper field drainage and monitor for nutrient leaching and disease outbreaks.

Meanwhile, farmers in other parts of the country are advised to take advantage of intermittent rainfall to carry out weeding, apply fertilizers, mulch, and finalize land preparation activities.

Pastoralists in the Northeastern region are encouraged to harvest and store water, provide shelter for livestock, and remain vigilant for pests and livestock diseases.

1.1 Expected Weather conditions in the Next Ten days 21ST – 30TH April 2026.

Rainfall is expected to continue in some parts of the Highlands East and West of the Rift Valley, the South Rift Valley, the Southeastern Lowlands, the Coast and Northeastern parts of Kenya. Isolated heavy rainfall events are likely to occur in some parts of these regions. Most other areas will experience partly cloudy to sunny conditions with occasional light showers.

(fig 1)

Several regions will have enough soil moisture conditions for crop development. (fig 2).

Temperatures will remain high in the lowland areas, while cooler night temperatures are likely in the highland regions.

Overall, the period is expected to have generally warm conditions with localized rainfall events.

1.2 General Advisory

With rainfall expected to increase in coverage and intensity, farmers are advised to adopt appropriate soil and water management practices during this period.

- In areas experiencing enhanced rainfall and isolated heavy events, farmers should ensure proper field drainage to minimize waterlogging and crop damage, while monitoring for nutrient leaching and disease outbreaks.
- In areas experiencing gusty wind conditions staking of vulnerable crops, maintaining adequate soil moisture, and avoiding agrochemical application during windy conditions.

- Where rainfall is intermittent, farmers should take advantage of dry intervals to complete weeding and finalize planting activities.
- In relatively drier areas, conservation practices such as mulching and minimum tillage are encouraged to enhance soil moisture retention.
- Pastoralists, particularly in the Northeastern and ASAL regions, are advised to harvest and store rainwater, provide shelter for livestock against strong winds, and remain vigilant for pests and livestock diseases.
- Strategic livestock movement to areas with adequate water and pasture is also recommended in the ASAL regions.
- Overall, farmers are encouraged to harvest rainwater and maintain soil conservation measures to maximize the benefits of the ongoing rains.

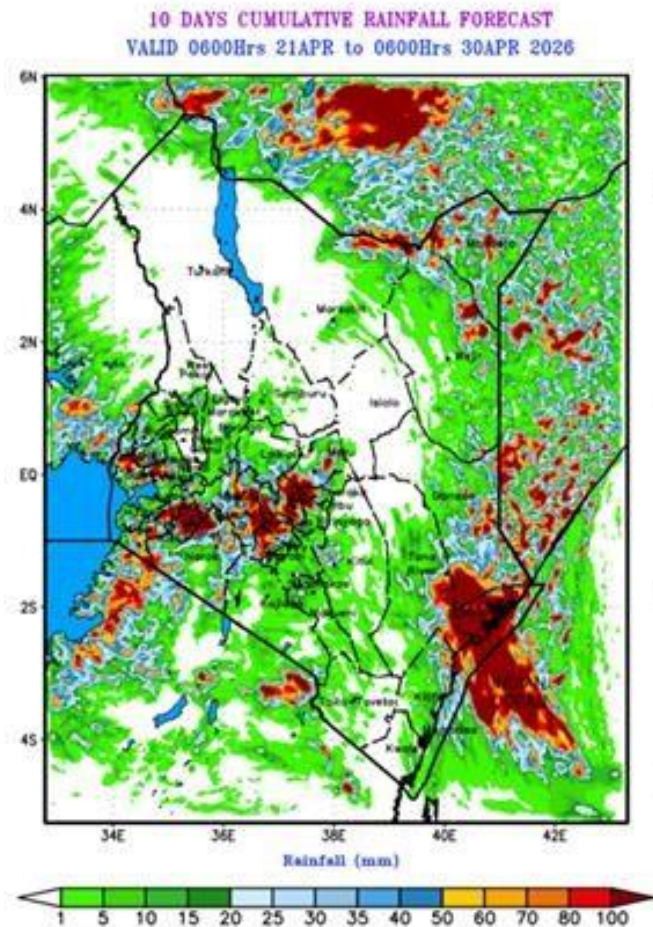


Fig 1. Dekadal Rainfall Forecast Map

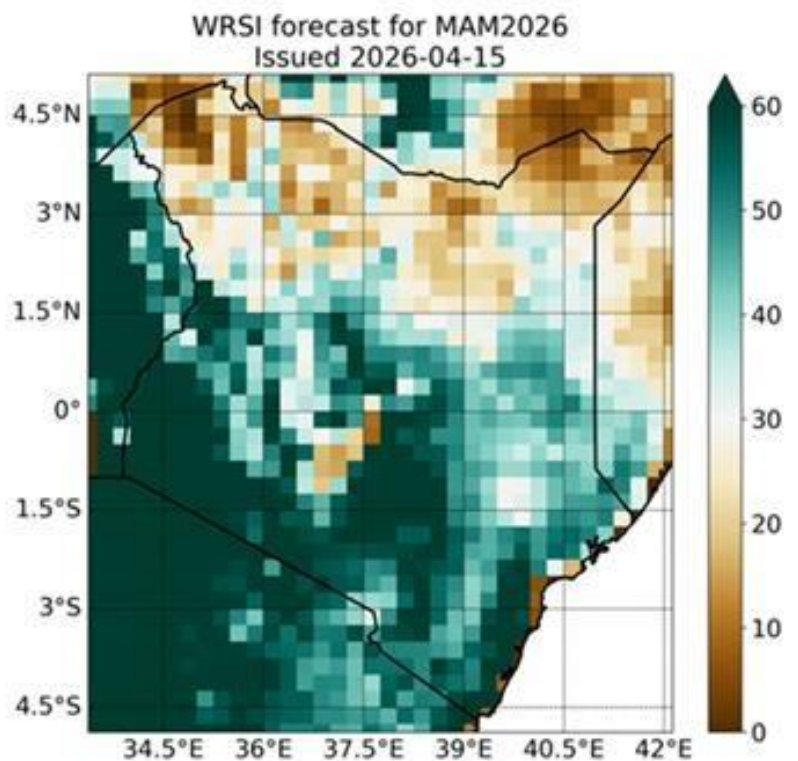


Fig 2. Water Requirement Satisfaction Index Map

2.0 WEATHER, SOIL AND CROP CONDITIONS DURING 11TH-20TH APRIL 2026

Precipitation: Most stations recorded below-average rainfall during the period under review, with cumulative totals below the long-term dekadal mean (Fig. 3 & Fig. 4)

The **highest** amount of rainfall was recorded at Kitui station in the Southeastern region with a total of 188.5 mm.

Cloud Cover: Most regions experienced broken cloud cover during the period under review.

Temperature Trends: Mean air temperatures were slightly lower across most parts of the country during the review period. (fig 7 & fig 8)

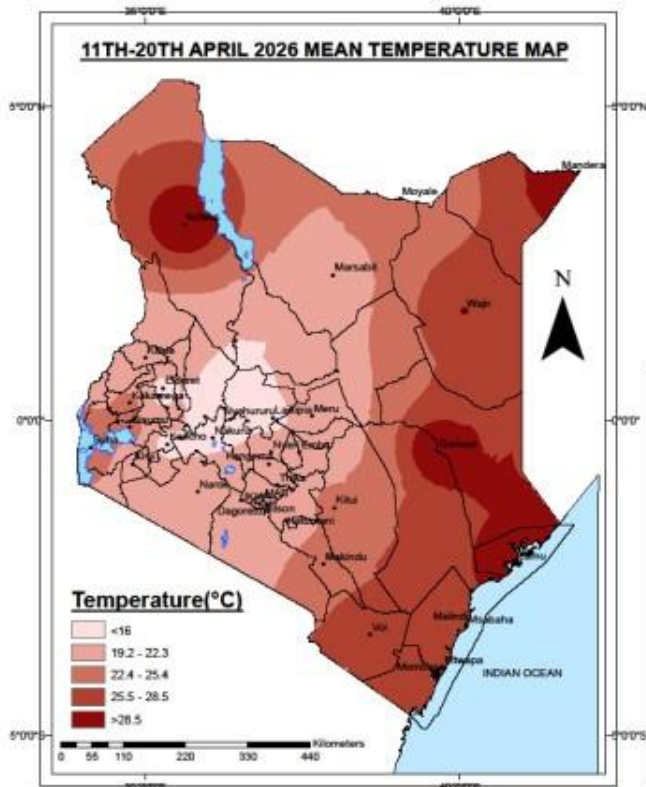


Fig 7. Dekadal Mean Temperature Map

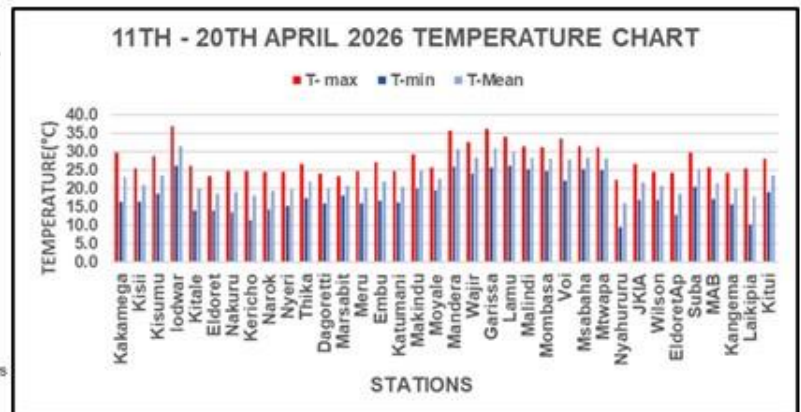


Fig 8. Dekadal Temperature Chart

REGIONAL WEATHER AND AGRICULTURAL CONDITIONS

1. Western and Nyanza Regions

Most stations in the region recorded below-normal rainfall relative to the long-term mean (LTM) during the dekad.

- ❖ **Kakamega:** Recorded 25.6 mm of rainfall during the dekad, Mean air temperature slightly increased from 22.3°C to 23.2°C.
- ❖ Farmers are weeding their crops.
- ❖ **Kisii:** Received 59.0mm of rainfall. Temperature slightly increased from 20.9°C to 21.1°C crops are doing well due to enhanced rainfall being dekad experienced in the region.

2. Rift Valley Region

Most stations in the region reported below normal rainfall compared to the LTM of the dekad.

- ❖ **Kericho:** Recorded 38.9 mm of rainfall; temperature slightly increased from 17.7° C to 18. 2°C.Farmers are weeding, beans are at a flowering stage.
- ❖ **Kitale:** Recorded 8.9 mm of rainfall during the dekad; Mean air temperature slightly decreased from 20.7°C.to 20.2°C. Most farmers have planted; crops are doing well.
- ❖ **Eldoret:** Recorded 6.7 mm of rainfall; mean air temperature slightly increased from 18.3°C to 18.7°C.

3. Central and Nairobi Region

Several stations within the region recorded below normal rainfall compared to the Long-Term Average.

- ❖ **Thika:** Recorded 19.1 mm of rainfall; Mean air temperature slightly increased from 22.0°C to 22. 5°C.Beans at flowering stage maize is at emergence stage.
- ❖ **Dagoretti:** Recorded 8.9 mm of rainfall, and Mean air temperature slightly decreased from 20.6°C to 20.1°C. Beans are at flowering stage. Both crops are corresponding well to the normal growth.
- ❖ **Kabete:** Recorded 77.2 mm of rainfall. Crops are doing well due to adequate rainfall during the dekad.
- ❖ **Nyeri:** Recorded 22.4 mm of rainfall; Mean air temperature slightly increased to 19.9°C. Crops are at post emergence stage, doing well due to good rains.

4. Eastern Region

Most stations reported above normal rainfall in the region.

- ❖ **Meru:** Recorded 100.3 mm of rainfall, mean temperature slightly decreased from 20.5°C to 20.4°C. Crops are performing well due to adequate rainfall, beans are at flowering stage.
- ❖ **Embu:** Recorded 134.8mm of rainfall; Mean air temperature decreased from 22.0°C to 21.3°C. Maize crop has passed 9th leaf and is doing well due to sufficient rainfall, bean crop manifest fair growth rate.
- ❖ **Katamani:** Recorded 52.5mm amount of rainfall; the Mean air temperature slightly decreased from to 20.6°C to 20.5°C. Crops are at post emergence stage and they are doing well.

5. Coastal Region

- ❖ Half the stations recorded below-normal rainfall and the rest recorded above-normal rainfall compared to the LTM. **Mtwapa:** Recorded 166.8 mm of rainfall; Mean temperature slightly decreased from 28.5°C to 28.2 °C .Planting is underway.
- ❖ **Msabaha:** recorded 33.0 mm of rainfall, Mean air temperature decreased from 29.3°C to 28. 4°C.Farmers have planted their farms and crops are at emergence stage.

6. Northeastern Region

Most stations in the region recorded above-normal rainfall during the period under review.

- ❖ Wajir registered the highest amount of rainfall at 75.3 mm,
- ❖ Mandera recorded 49.6 mm
- ❖ Marsabit recorded 33.9mm of rainfall .
- ❖ Mean air temperature in the region generally decreased compared to the previous dekad.



Paul Oloo
For: Ag. Director Meteorological Services

For inquiries or any clarification, please use the email below
E-mail: agrometkenya@gmail.com