



REPUBLIC OF KENYA
MINISTRY OF ENVIRONMENT, CLIMATE CHANGE AND FORESTRY
State Department for Environment & Climate Change
KENYA METEOROLOGICAL DEPARTMENT

Dagoretti Corner, Ngong Road, P. O. Box 30259, 00100 GPO, Nairobi, Kenya

Telephone: 254 (0) 20 3867880-7, 0724 255 153/4

E-mail: director@meteo.go.ke, info@meteo.go.ke **Website:** <https://www.meteo.go.ke>

Our Ref: MET/7/357

Date: 27th April 2026

WEEKLY WEATHER FORECAST FOR 28TH APRIL TO 4TH MAY 2026
&
REVIEW FOR 20TH TO 26TH APRIL 2026

SUMMARY

Weather Forecast for 28th April to 4th May 2026

- Rainfall is expected to continue in several parts of the country most notably the Highlands East and West of the Rift Valley, the Rift Valley, the Coast and Northeastern Kenya. Heavy rainfall events are likely to occur in some parts of these regions.

Weather Review for 20th to 26th April 2026

- Rainfall was recorded in several parts of the country.
- Daytime (maximum) temperatures increased in several stations including Marsabit, Moyale and Thika and decreased in Voi, Lamu and Kakamega among others.
- Night-time (minimum) temperatures decreased in most parts of the country though a few stations such as Lodwar, Kitale and Kakamega recorded slight increases.

1.0 WEATHER FORECAST FOR 28TH APRIL TO 4TH MAY 2026

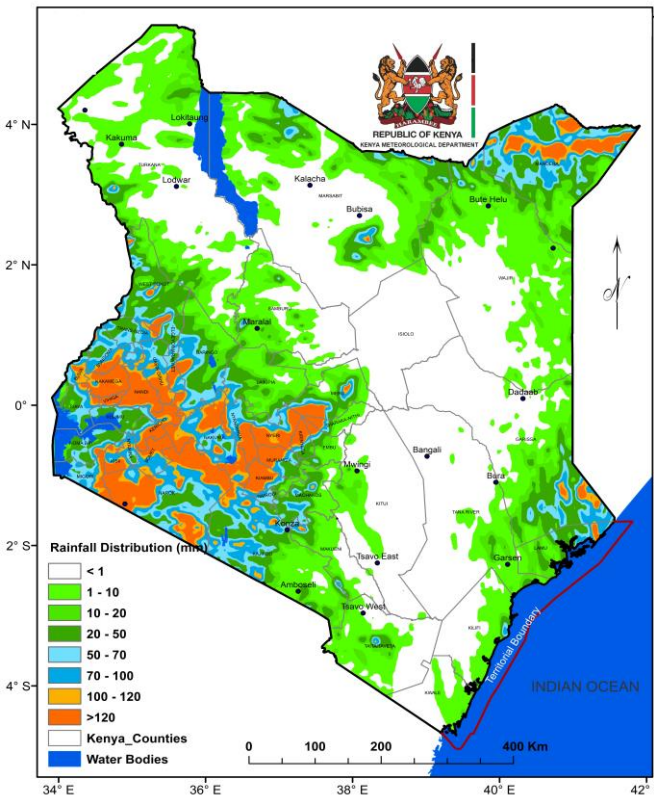


Figure 1: Forecasted Seven-Day Total Rainfall for 28th April to 4th May 2026

Rainfall is expected to continue in several parts of the country most notably the Highlands East and West of the Rift Valley, the Rift Valley, the Coast and Northeastern Kenya (Figure 1). Heavy rainfall events are likely to occur in some parts of these regions.

Daytime (maximum) average temperatures of more than 30°C are expected in the Coast, the Southeastern lowlands, Northeastern and Northwestern Kenya (Figure 2).

Night-time (minimum) average temperatures are expected to be less than 10°C in some parts of the Highlands East of the Rift Valley, the Central Rift Valley and in the vicinity of Mt. Kilimanjaro (Figure 3).

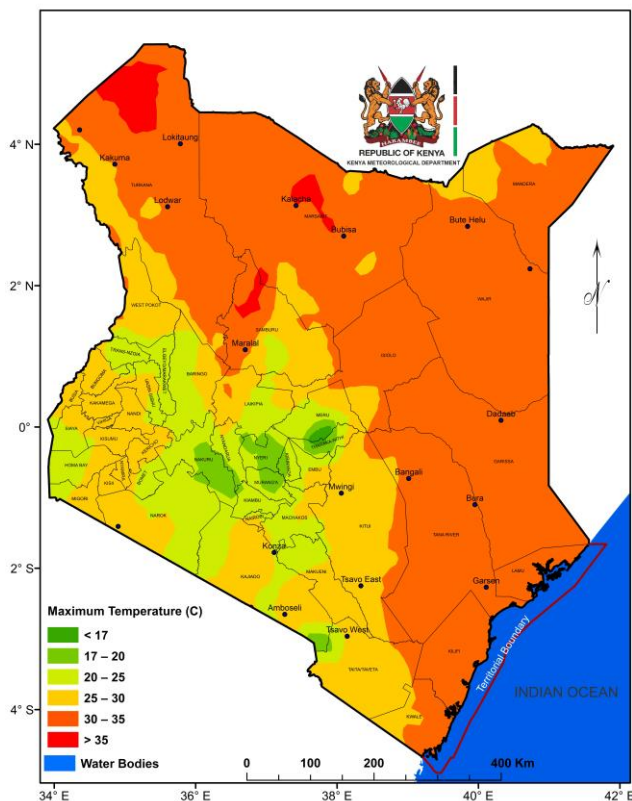


Figure 2: Forecasted Average Maximum Temperatures for 28th April to 4th May 2026

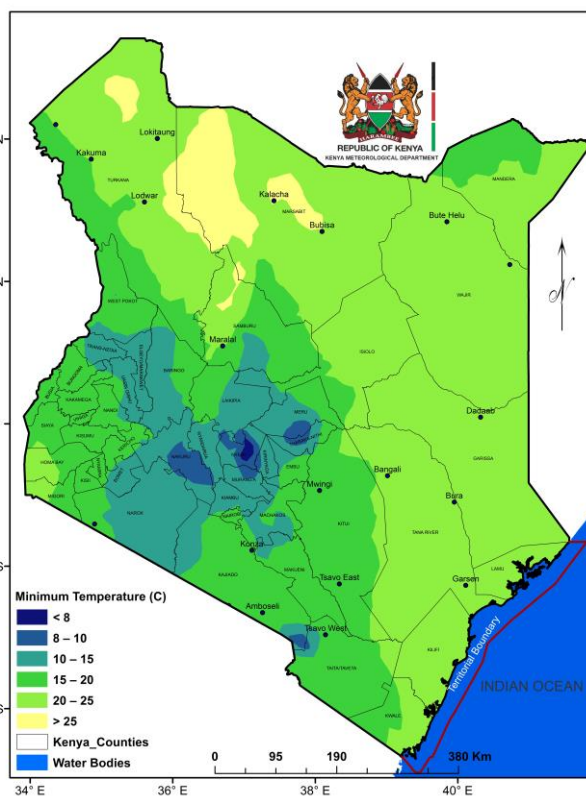


Figure 3: Forecasted Average Minimum Temperatures for 28th April to 4th May 2026

1.1 DETAILED REGIONAL RAINFALL FORECAST FOR 28TH APRIL TO 4TH MAY 2026

1.1.1 *The Highlands West of the Rift Valley, the Lake Victoria Basin and the Rift Valley (Nandi, Kakamega, Vihiga, Bungoma, Siaya, Busia, Baringo, Nakuru, Trans-Nzoia, Uasin-Gishu, Elgeyo-Marakwet, West-Pokot, Kisii, Nyamira, Kericho, Bomet, Kisumu, Homabay, Migori and Narok Counties):*

Morning rains are likely to occur over few places. Afternoon showers and thunderstorms are expected over several places. Night showers are likely to occur over few places.

1.1.2 *North-western Kenya (Turkana and Samburu Counties):*

Morning rains as well as afternoon and night showers are likely to occur over few places during the first half of the forecast period.

1.1.3 *The Highlands East of the Rift Valley (Nyandarua, Laikipia, Nyeri, Kirinyaga, Murang'a, Kiambu, Meru, Embu, Tharaka-Nithi and Nairobi Counties):*

Morning rains are likely to occur over few places during the first half of the forecast period. Afternoon showers and thunderstorms are expected over several places. Night showers are likely to occur over few places occasionally spreading to several places.

1.1.4 *North-eastern Kenya (Marsabit, Mandera, Wajir, Garissa and Isiolo Counties):*

Morning rains as well as afternoon and night showers and thunderstorms are likely to occur over few places.

1.1.5 *The South-eastern lowlands (Machakos, Kitui, Makueni, Kajiado and Taita-Taveta Counties as well as the inland parts of Tana-River County):*

Morning rains are likely to occur over few places during the first half of the forecast period. Afternoon and night showers and thunderstorms are likely to occur over few places.

1.1.6 *The Coast (Mombasa, Kilifi, Lamu and Kwale Counties as well as the Tana Delta):*

Morning, afternoon and night showers are likely to occur over few places.

1.2 DETAILED TEMPERATURE FORECAST FOR 28TH APRIL TO 4TH MAY 2026

Expected maximum and minimum temperatures for selected cities and towns are shown in Table 1.

TABLE 1: FORECASTED MAXIMUM AND MINIMUM TEMPERATURES FOR SELECTED CITIES AND TOWNS								
CITY/TOWN	MAX (°C)	MIN (°C)	CITY/TOWN	MAX (°C)	MIN (°C)	CITY/TOWN	MAX (°C)	MIN (°C)
LODWAR	38.0	26.0	KISUMU	30.0	18.0	THIKA	29.0	17.0
MARSABIT	25.0	17.0	SUBA	31.0	20.0	MACHAKOS	26.0	15.0
MOYALE	28.0	19.0	NAKURU	25.0	13.0	MAKINDU	30.0	18.0
GARISSA	36.0	24.0	NAROK	25.0	12.0	KITUI	29.0	18.0
WAJIR	34.0	22.0	LAIKIPIA	25.0	11.0	VOI	33.0	21.0
MANDERA	36.0	23.0	NYAHURURU	23.0	07.0	LAMU	35.0	24.0
KITALE	27.0	13.0	KANGEMA	25.0	15.0	MALINDI	32.0	24.0
KAKAMEGA	30.0	16.0	NYERI	25.0	15.0	MSABAHA	32.0	24.0
ELDORET	24.0	11.0	EMBU	27.0	16.0	MTWAPA	32.0	24.0
KERICHO	26.0	10.0	MERU	25.0	15.0	MOMBASA	32.0	23.0
KISII	27.0	16.0	NAIROBI	26.0	15.0			

2.0 WEATHER REVIEW FOR 20TH TO 26TH APRIL 2026

2.1 Rainfall Review

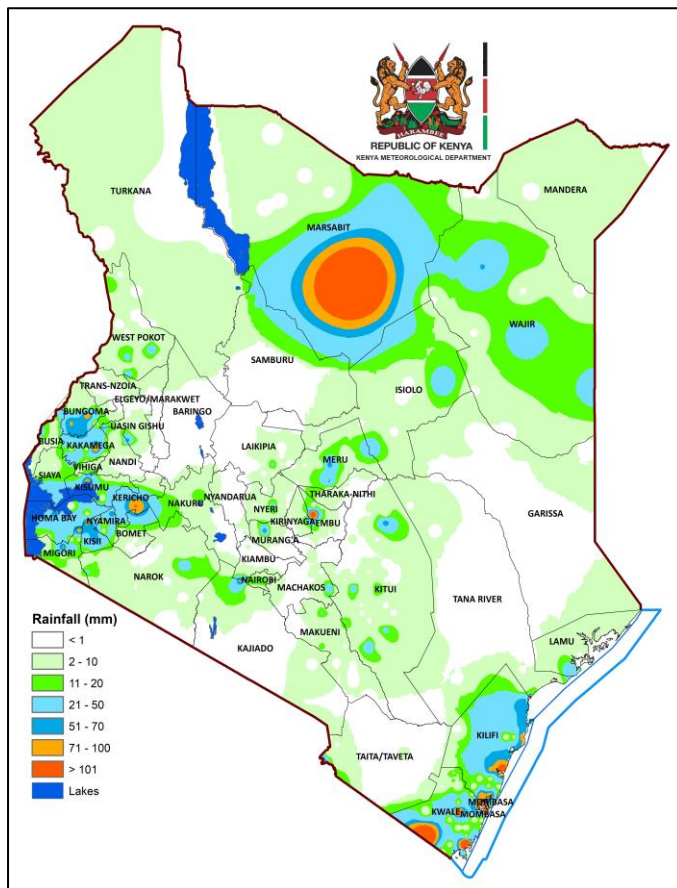


Figure 4: Observed Seven-Day Total Rainfall for 20th to 26th April 2026

Rainfall was recorded over several parts of the country (Figures 4 and 5). Isolated heavy rainfall events occurred in a number of counties including Marsabit, Kwale, Murang’a, Embu, Kilifi and Kakamega.

The highest seven-day rainfall total (281.0 mm) was recorded at Ramisi Rainfall Station in Kwale County.

Marsabit Meteorological Station recorded the highest amount of rainfall within 24-hours: 232.4mm on 25th April 2026.

Comparing the 13th to 19th April and the 20th to 26th April 2026 review periods, it is noted that rainfall amounts increased in the Highlands West of the Rift Valley and the Coast and decreased over the Southeastern Lowlands.

APPENDIX I: INTERPRETATION OF TERMS USED

Term	Rainfall Amount (24 hrs.)	Description
Light	< 5 mm	Gentle rain, drizzle.
Moderate	5–20 mm	Steady, noticeable rain.
Heavy	21–50 mm	Intense rain, possible thunder.
Very Heavy	> 50 mm	Prolonged rain, high intensity.

Term	Area Affected	Description
Few places	< 33%	Rain in a small portion of the region.
Several places	33% to 66%	Rain in multiple but not most parts of the region.
Most places	> 66%	Rain in nearly all parts of the region.

Term	Area Affected	Description
Isolated	Less than 25%	Very few areas affected.
Scattered	25–50%	Several, but not most, areas affected.
Numerous	51–70%	Many areas affected.
Widespread	Over 70%	Almost all areas affected.

Term	Time Coverage (%)	Meaning
Occasional	Less than 25%	Happens rarely or a few times.
Intermittent	25% – 50%	Starts and stops, comes and goes.
Frequent	51% – 75%	Occurs regularly.
Very Frequent / Common	More than 75%	Happens almost all the time.

Term	Probability of Occurrence	Description
Possible	10–30%	There is low confidence.
Chance of/ May	31–50%	There is moderate confidence.
Likely	51–75%	The event is more probable than not.
Expected	76–90%	There is high confidence.
Very Likely	91–99%	There is very high confidence. Almost certain.
Certain	100%	The event is guaranteed to occur.