



## KMD 10 DAY AGROMETEOROLOGICAL BULLETIN



Ref: MET/8/001/1

Issue No: 12/2026

Date: 03/05/2026

**DEKAD 12 PERIOD: 1<sup>ST</sup> – 10<sup>TH</sup> MAY 2026.**

### 1.0 HIGHLIGHTS

Rainfall is expected in several parts of the country during the dekad, particularly over the Highlands East and West of the Rift Valley, the Lake Victoria Basin, the Rift Valley, the Coast and parts of Northeastern Kenya. Enhanced rainfall, including heavy rainfall events, is likely during the early part of the dekad, in line with the seasonal outlook indicating increased rainfall activity at the beginning of May.

The expected rainfall is likely to improve soil moisture conditions and support crop growth in most agricultural areas. However, there is a risk of localized flooding and waterlogging in high rainfall areas, while some parts of the Southeastern lowlands may experience relatively lower rainfall.

### 1.1 Expected Weather conditions in the Next Ten days 1<sup>ST</sup> – 10<sup>TH</sup> May 2026.

Rainfall is expected over several parts of the country, especially the Highlands East and West of the Rift Valley, the Lake Victoria Basin, the Rift Valley, the Coast and Northeastern Kenya. Heavy rainfall events are likely in some areas, particularly during the early part of the dekad.

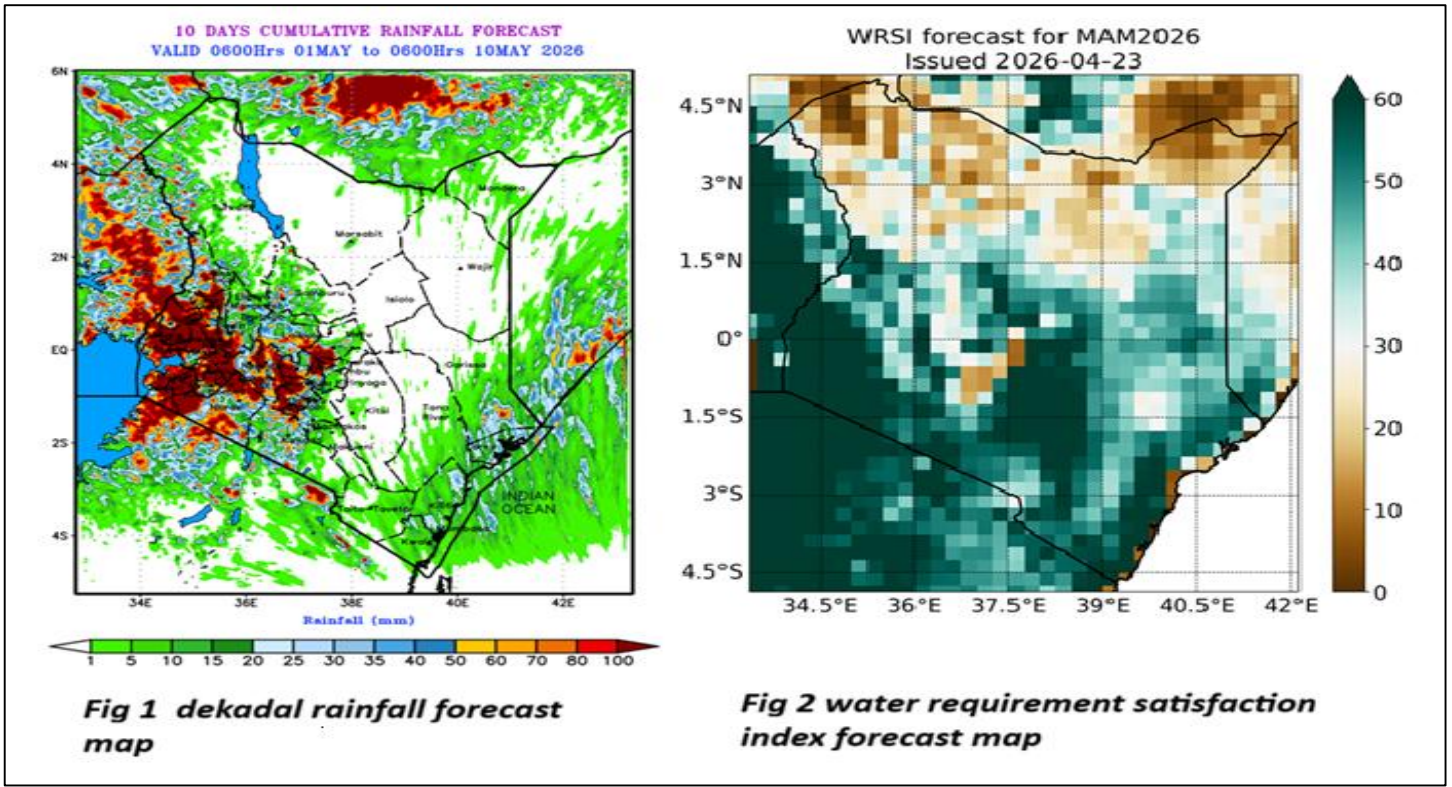
Rainfall activity is expected to be enhanced during the first week of May, followed by a gradual reduction in intensity and coverage toward the end of the dekad as the long rains season weakens (**fig 1**).

Several regions will still have enough soil moisture conditions for crop development (**fig 2**). Temperatures are expected to remain warmer than average across most parts of the country.

### 1.2 General Advisory

Farmers in high rainfall areas, including the Highlands, Lake Victoria Basin and parts of the Rift Valley, are advised to ensure proper drainage, continue with weeding and top dressing and monitor crops for waterlogging and disease outbreaks. In the Southeastern lowlands and other marginal areas, farmers should conserve soil moisture through mulching and timely weeding and closely monitor crops for moisture stress as rainfall declines.

Pastoralists, particularly in Northeastern and arid regions, are encouraged to take advantage of improved pasture and water availability, while remaining vigilant for livestock diseases associated with wet conditions and avoiding flood-prone areas.

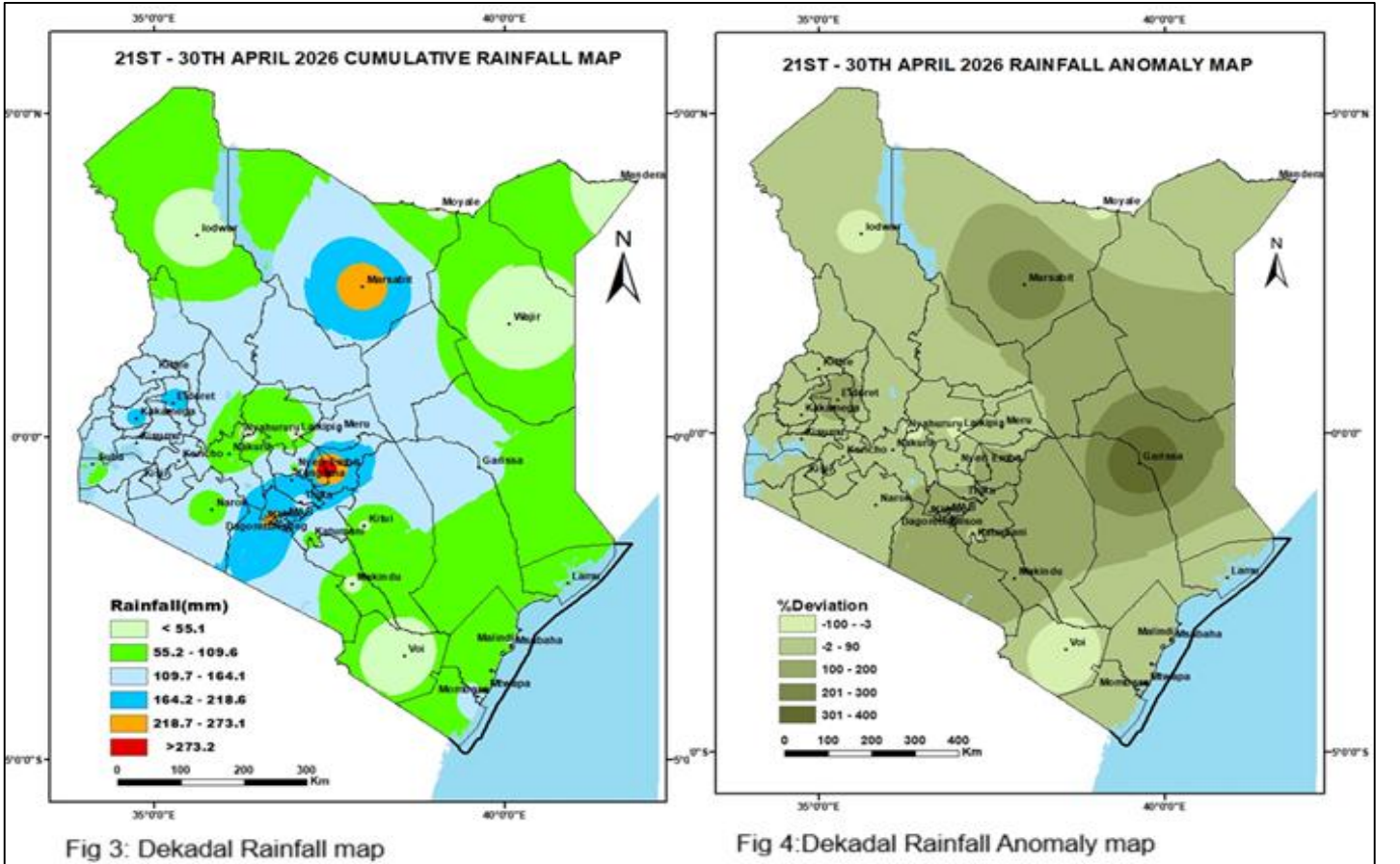


**2.0 WEATHER, SOIL AND CROP CONDITIONS DURING 21<sup>ST</sup> – 30<sup>TH</sup> APRIL 2026**

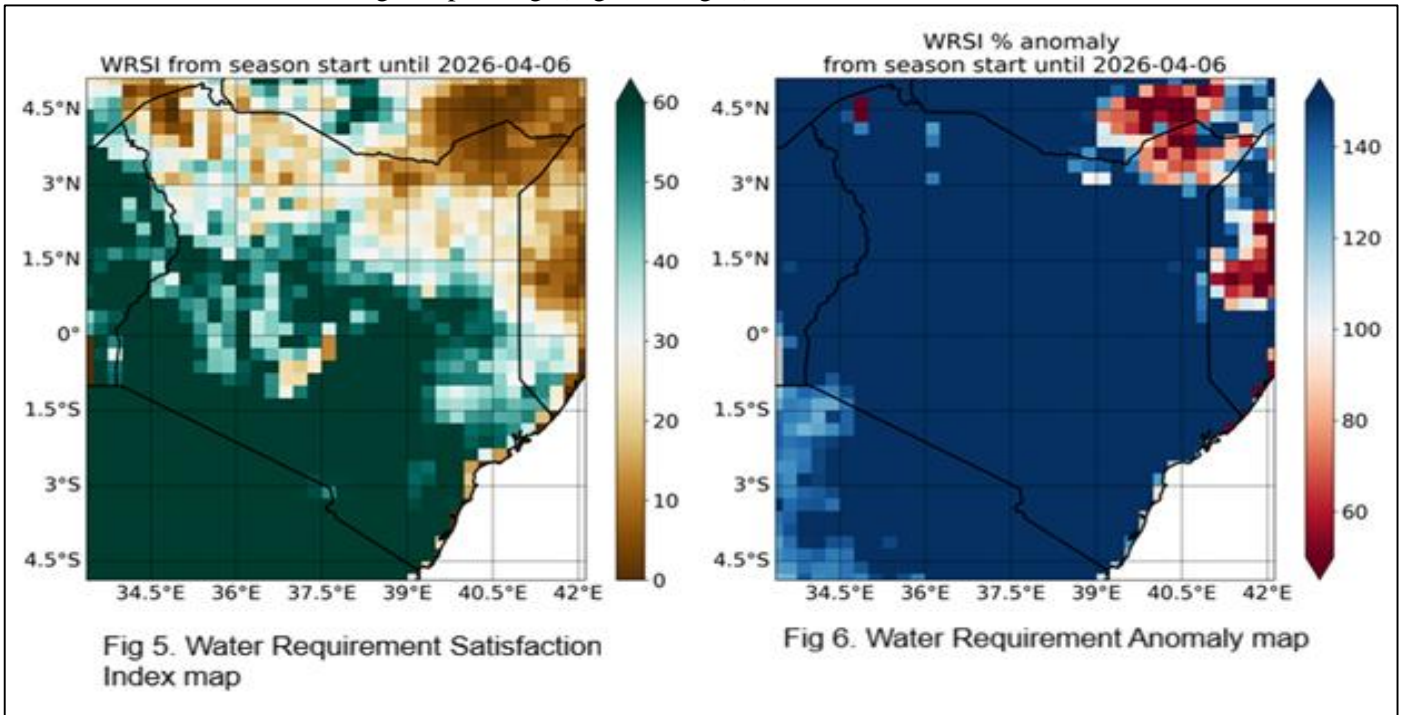
**Precipitation:** Most stations recorded above-average rainfall during the period under review, with cumulative totals above the long-term dekadal mean (Fig. 3 & Fig. 4)

The **highest** amount of rainfall was recorded at Embu station in the eastern region with a total of 327.8mm.

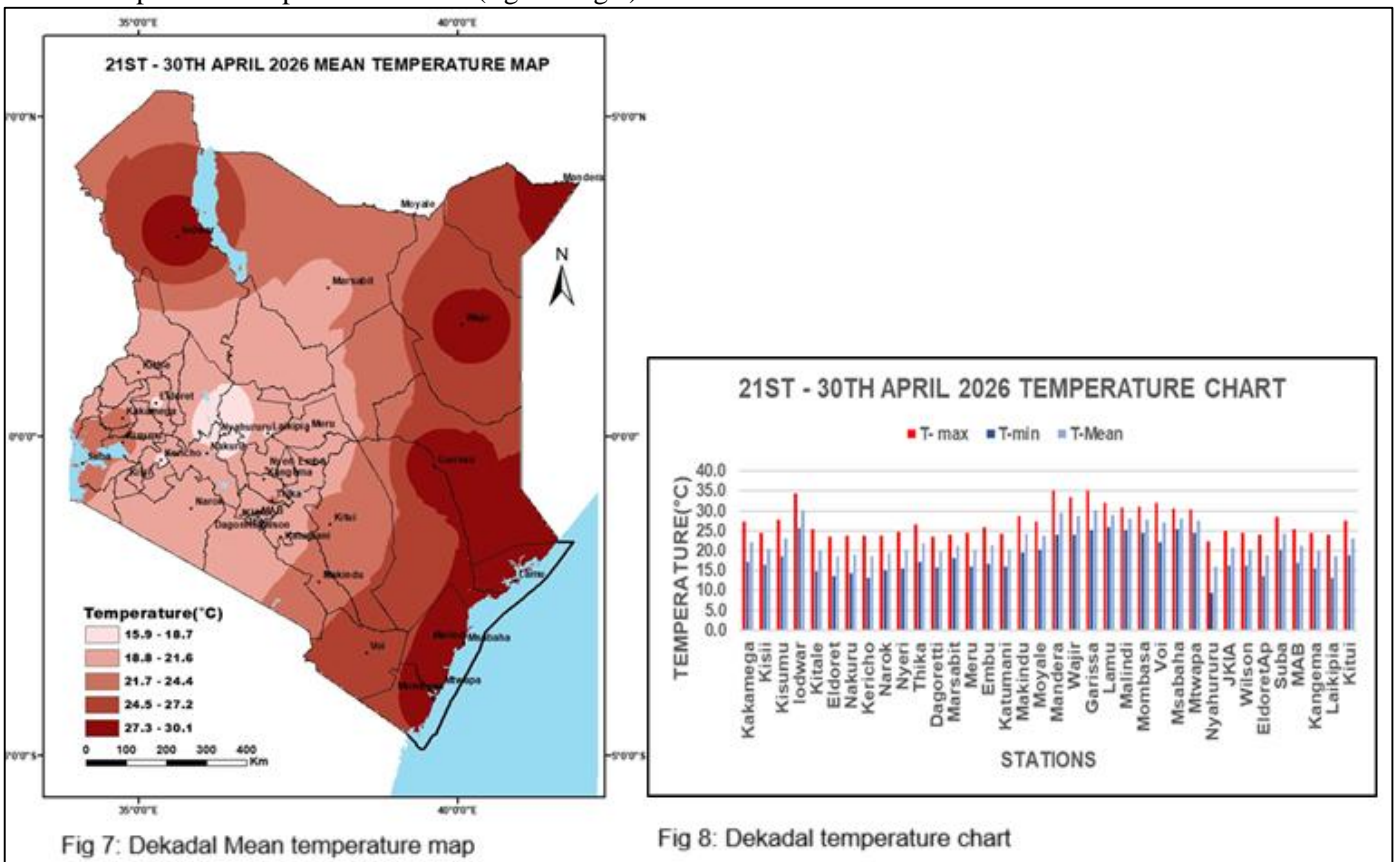
**Cloud Cover:** Most regions experienced broken cloud cover during the period under review.



**Soil Moisture:** Soil moisture conditions reduced due to the subsidence of rainfall amount from the last Dekad, creating favorable conditions for weeding and planting. (Fig. 5 & Fig. 6).



**Temperature Trends:** Mean air temperatures were slightly lower across most parts of the country during the review Period compared to the previous dekad. (fig 7 & fig 8)



## REGIONAL WEATHER AND AGRICULTURAL CONDITIONS

### 1. Western and Nyanza Regions

Most stations in the region recorded above-normal rainfall relative to the long-term mean (LTM) during the dekad.

**Kakamega:** Recorded 172.4 mm of rainfall during the dekad, mean air temperature decreased slightly from 23.2°C to 22.1°C. Farmers are weeding their crops.

**Kisii:** Received 129.8mm of rainfall. Temperature slightly decreased from 21.1°C to 20.5°C crops have germinated and are doing well due to enhanced rainfall being experienced in the region.

### 2. Rift Valley Region

Most stations in the region reported below normal rainfall compared to the LTM of the dekad.

**Kericho:** Recorded 160.5 mm of rainfall; temperature slightly increased from 18.2°C to 18.5°C. Farmers are weeding, beans are at a flowering stage.

**Kitale:** Recorded 139.41mm of rainfall during the dekad; mean air temperature slightly increased from 20.1°C to 20.2°C. Most farmers have planted; crops are doing well.

**Eldoret:** Recorded 190.3mm of rainfall; mean air temperature slightly decreased from 18.7°C to 18.5°C.

### 3. Central and Nairobi Region

Several stations within the region recorded below normal rainfall compared to the Long-Term Average.

**Thika:** Recorded 19.1 mm of rainfall; mean air temperature slightly decreased from 22.5°C to 21.9°C. Beans at flowering stage maize is at emergence stage.

**Dagoretti:** Recorded 8.9 mm of rainfall, and mean air temperature slightly increased from 20.1°C to 22.1°C. Beans are at flowering stage.

**Kabete:** Recorded 269.5mm of rainfall. Reduced rainfall affected crop emergence.

**Nyeri:** Recorded 93.6mm of rainfall; Mean air temperature slightly reduced 19.6°C to 20.2°C. Crops are at post emergence stage, doing well due to good rains.

### 4. Eastern Region

Most stations reported below normal rainfall in the region.

**Meru:** Recorded 157.4 mm of rainfall, mean temperature slightly decreased from 20.4°C to 20.2°C. Crops are performing well due to adequate rainfall, farmers are wedding their crops.

**Embu:** Recorded 327.0 mm of rainfall; Mean air temperature maintained at 21.3°C. Maize crop has passed 9<sup>th</sup> leaf and is doing well due to sufficient rainfall, bean crop manifest fair growth rate.

**Katumani:** Recorded 81.1mm; the mean air temperature decreased from 20.5°C to 20.2°C. Crops are at post emergence stage and they are doing well.

### 5. Coastal Region

Most stations in the region recorded below normal rainfall compared to the LTM.

**Mtwapa:** Recorded 101.51 mm of rainfall; Mean temperature increased from 28.2°C to 27.5 °C some farmers have started planting while some are still preparing their lands.

**Msabaha:** recorded 78.72 mm of rainfall, mean air temperature increased from 28.4°C to 28.0°C. Farmers have planted their farms and crops are at emergence stage.

### 6. Northeastern Region

Most stations in the region recorded above-normal rainfall during the period under review. Marsabit recorded highest amount of rainfall 205.0mm followed by Garissa which recorded 112.0mm and Wajir registered 1mm.

Mean air temperature in the region generally decreased compared to the previous dekad.

---



Paul Oloo

For: Ag. Director Meteorological Services

For inquiries or any clarification, please use the email below

**E-mail: [agrometkenya@gmail.com](mailto:agrometkenya@gmail.com)**