



**REPUBLIC OF KENYA**  
**MINISTRY OF ENVIRONMENT, CLIMATE CHANGE AND FORESTRY**  
**State Department for Environment & Climate Change**  
**KENYA METEOROLOGICAL DEPARTMENT**  
**COUNTY METEOROLOGICAL OFFICE**

Kitui-Mutomo By-pass, Manyenyoni area,  
P.O. Box 205, 90200 Kitui, Kenya

**Kitui County Cumulative Weekly Weather forecast**

**1.1 PART I: KITUI COUNTY FORECAST FOR SEVEN-DAY TOTAL RAINFALL, MAXIMUM TEMPERATURE AND MINIMUM TEMPERATURE FOR 5<sup>TH</sup> TO 11<sup>TH</sup> MAY, 2026**

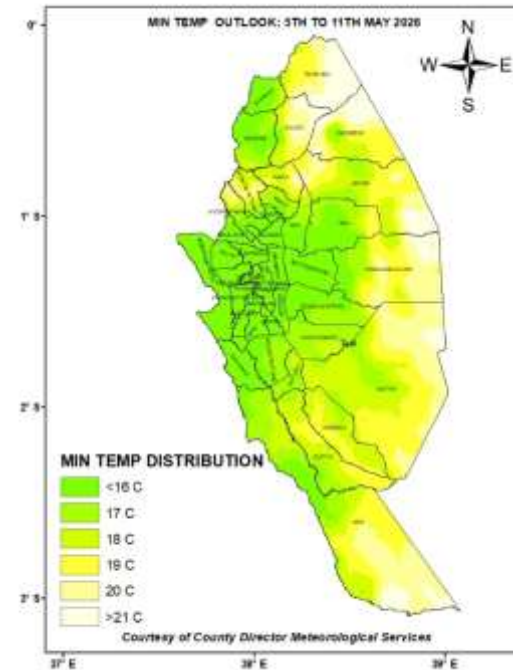
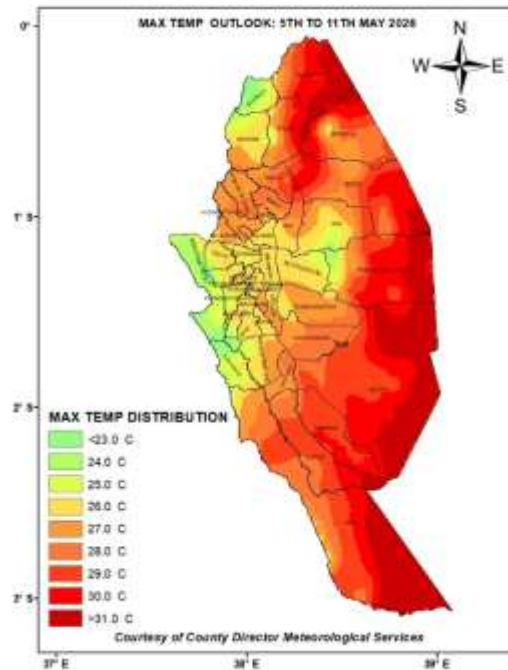
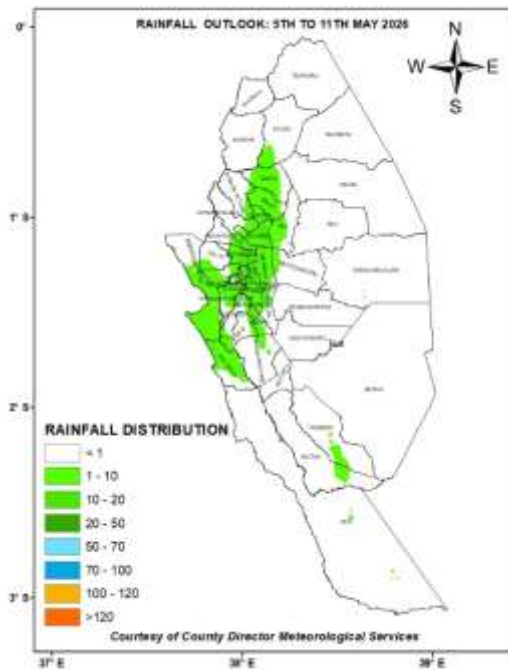


Figure 1: Forecasted Seven-Day Total Rainfall for 5<sup>th</sup> to 11<sup>th</sup> May 2026    Figure 2: Forecasted Seven-Day Mean Max Temperatures for 5<sup>th</sup> to 11<sup>th</sup> May 2026    Figure 3: Forecasted Seven-Day Mean Mini Temperatures for 5<sup>th</sup> to 11<sup>th</sup> May 2026

## 1.2 PART II: WARDS BASED WEEKLY FORECAST TABLE

Sub-county	Ward	Probable Total weekly amount (mm)	Probable weather							Winds (km/h kilometers per hour)	Temp (Tmax °C & Tmin °C)
			Notes: Light rains <1-5 mm; Moderate rains 5-20 mm; Heavy rains 20-50 mm; Very heavy rains >50 mm								
			Tue	Wed	Thur	Fri	Sat	Sun	Mon		
<b>Mwingi West</b>	Nguutani	<20 mm	Light Rain	Mod Rain	Mod Rain	Light Rain	Light Rain	Light Rain	Light Rain	Easterly 21.6 km/h	Max 25-29 °C Min 18-20 °C
	Kyome/Thaana	<20 mm	Light Rain	Mod Rain	Mod Rain	Light Rain	Light Rain	Light Rain	Light Rain		
	Kiomo/Kyethani	<20 mm	Light Rain	Mod Rain	Mod Rain	Light Rain	Light Rain	Light Rain	Light Rain		
	Migwani	<20 mm	Light Rain	Mod Rain	Mod Rain	Light Rain	Light Rain	Light Rain	Light Rain		
<b>Mwingi North</b>	Ngomeni	<20 mm	Light Rain	Mod Rain	Mod Rain	Light Rain	No Rain	No Rain	No Rain	Easterly 21.6 km/h	Max 27-32 °C Min 19-22 °C
	Kyuso	<20 mm	Light Rain	Mod Rain	Mod Rain	Light Rain	No Rain	No Rain	No Rain		
	Tseikuru	<20 mm	Light Rain	Mod Rain	Mod Rain	Light Rain	Light Rain	Light Rain	No Rain		
	Tharaka	<20 mm	Light Rain	Mod Rain	Mod Rain	Light Rain	Light Rain	Light Rain	No Rain		
	Mumoni	<20 mm	Light Rain	Mod Rain	Mod Rain	Light Rain	Light Rain	Light Rain	No Rain		
<b>Mwingi Central</b>	Central	<20 mm	Light Rain	Mod Rain	Mod Rain	Light Rain	Light Rain	Light Rain	No Rain	Easterly 18.0 km/h	Max 26-31 °C Min 18-21 °C
	Kivou	<20 mm	Light Rain	Mod Rain	Mod Rain	Light Rain	Light Rain	Light Rain	No Rain		
	Mui	<20 mm	Light Rain	Mod Rain	Mod Rain	Light Rain	Light Rain	Light Rain	No Rain		
	Waita	<20 mm	Light Rain	Mod Rain	Mod Rain	Light Rain	Light Rain	Light Rain	No Rain		
	Nuu	<20 mm	Light Rain	Mod Rain	Mod Rain	Light Rain	Light Rain	Light Rain	No Rain		
	Nguni	<20 mm	Light Rain	Mod Rain	Mod Rain	Light Rain	Light Rain	Light Rain	No Rain		
<b>Kitui South</b>	Ikanga/Kyatune	<20 mm	Light Rain	Mod Rain	Mod Rain	Light Rain	Light Rain	Light Rain	No Rain	Easterly 21.6 km/h	Max 26-31 °C Min 18-21 °C
	Mutomo/Kibwea	<20 mm	Light Rain	Mod Rain	Mod Rain	Light Rain	Light Rain	Light Rain	No Rain		
	Kanziko/Simisi	<20 mm	Light Rain	Mod Rain	Mod Rain	Light Rain	Light Rain	Light Rain	No Rain		
	Mutha	<20 mm	Light Rain	Mod Rain	Mod Rain	Light Rain	Light Rain	No Rain	No Rain		
	Ikutha	<20 mm	Light Rain	Mod Rain	Mod Rain	Light Rain	Light Rain	No Rain	No Rain		
	Athi	<20 mm	Light Rain	Mod Rain	Mod Rain	Light Rain	Light Rain	No Rain	No Rain		
<b>Kitui East</b>	Chuluni	<20 mm	Light Rain	Mod Rain	Mod Rain	Light Rain	Light Rain	Light Rain	Light Rain	Easterly 18.0 km/h	Max 24-31 °C Min 18-21 °C
	Nzambani	<20 mm	Light Rain	Mod Rain	Mod Rain	Light Rain	Light Rain	Light Rain	Light Rain		
	Mutito/Kaliku	<20 mm	Light Rain	Mod Rain	Mod Rain	Light Rain	Light Rain	Light Rain	Light Rain		
	Zombe/Mwitika	<20 mm	Light Rain	Mod Rain	Mod Rain	Light Rain	Light Rain	Light Rain	Light Rain		

Sub-county	Ward	Probable Total weekly amount (mm)	Probable weather							Winds (km/h kilometers per hour)	Temp (Tmax °C & Tmin °C)
			Notes: Light rains <1-5 mm; Moderate rains 5-20 mm; Heavy rains 20-50 mm; Very heavy rains >50 mm								
			Tue	Wed	Thur	Fri	Sat	Sun	Mon	Weekly	Weekly
	Voo/Kyamatu	<20 mm	Light Rain	Mod Rain	Mod Rain	Light Rain	Light Rain	Light Rain	Light Rain		
	Endau/Malalani	<20 mm	Light Rain	Mod Rain	Mod Rain	Light Rain	Light Rain	Light Rain	Light Rain		
Kitui Rural	Mbitini	<20 mm	Light Rain	Mod Rain	Mod Rain	Light Rain	Light Rain	Light Rain	Light Rain	Easterly 18.0 km/h	Max 24-28 °C Min 18-20 °C
	Kisasi	<20 mm	Light Rain	Mod Rain	Mod Rain	Light Rain	Light Rain	Light Rain	Light Rain		
	Kyangi	<20 mm	Light Rain	Mod Rain	Mod Rain	Light Rain	Light Rain	Light Rain	Light Rain		
	Yatta/Kwa Vonza	<20 mm	Light Rain	Mod Rain	Mod Rain	Light Rain	Light Rain	Light Rain	Light Rain		
Kitui West	Kauwi	<20 mm	Fog	Mod Rain	Mod Rain	Light Rain	Light Rain	Light Rain	Light Rain	Easterly 18.0 km/h	Max 22-27 °C Min 16-19 °C
	Mutonguni	<20 mm	Fog	Mod Rain	Mod Rain	Light Rain	Light Rain	Light Rain	Light Rain		
	Matinyani	<20 mm	Fog	Mod Rain	Mod Rain	Light Rain	Light Rain	Light Rain	Light Rain		
	Kithumula/Kwa Mutonga	<20 mm	Light Rain	Mod Rain	Mod Rain	Light Rain	Light Rain	Light Rain	Light Rain		
Kitui Central	Kyangwithya East	<20 mm	Fog	Mod Rain	Mod Rain	Light Rain	Light Rain	Light Rain	Light Rain	Easterly 18.0 km/h	Max 24-29 °C Min 17-21 °C
	Kyangwithya West	<20 mm	Fog	Mod Rain	Mod Rain	Light Rain	Light Rain	Light Rain	Light Rain		
	Township	<20 mm	Fog	Mod Rain	Mod Rain	Light Rain	Light Rain	Light Rain	Light Rain		
	Mulango	<20 mm	Fog	Mod Rain	Mod Rain	Light Rain	Light Rain	Light Rain	Light Rain		
	Miambani	<20 mm	Light Rain	Mod Rain	Mod Rain	Light Rain	Light Rain	Light Rain	Light Rain		

### 1.3 WEATHER REVIEW FOR 14<sup>TH</sup> TO 20<sup>TH</sup> APRIL 2026

Rainfall was recorded in several parts of the County. The highest daytime (maximum) temperature was recorded in Tseikuru Ward. The lowest night-time (minimum) temperature was recorded in the hills of Mutonguni Ward.

## 1.4 PART II: FURTHER ADVISORIES

### SUMMARY ABOUT THE WEEKLY FORECAST:

Rainfall is expected to continue in Kitui County. Isolated events of heavy rainfall may occur in some parts of the County.

Maximum temperatures are expected to range from 22°C - 31°C, while minimum temperatures are expected to range from 16°C - 22°C.

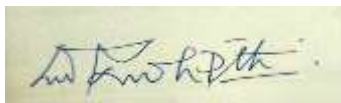
Strong easterly to south-easterly winds with speeds not exceeding 25 knots (12.86 m/s) are expected to persist in most parts of the County.

*Community members advised to inculcate the culture of being "weather – ready", "climate – smart" and "water – wise" as we navigate the unfamiliar and chaotic environment of a changing climate. This will help them adapt to a changing climate while at the same time mitigating the adverse effects of Climate Change and Variability, hence becoming more resilient to the vagaries of Climate Change.*

In light of this weather forecast, farmers are also advised to consult with respective local extension officers from the County Ministry of Agriculture and Livestock at Ward and Sub-county level for more advice on the best farm practices.

***NB: Updates on the seasonal performance and key climate drivers, including the Madden–Julian Oscillation (MJO) and tropical cyclones that may occasionally alter the seasonal rainfall performance, will be provided regularly. These updates will offer detailed insights into evolving rainfall patterns, thereby keeping stakeholders informed and supporting timely and informed decision-making.***

**For further information, please contact:**



Daniel M. Mbithi  
County Director of Meteorological Services  
Mobile: 0715255171  
Email: [mbithi\\_d@yahoo.com](mailto:mbithi_d@yahoo.com)

**You can find more information about the climate and weather in Kenya on the KMD website**

**<http://www.meteo.go.ke/>**

**[Follow us on X and IG: x.com/MeteoKenya](https://twitter.com/MeteoKenya) and [Facebook: fb.com/KenyaMeteorologicalDepartment](https://www.facebook.com/KenyaMeteorologicalDepartment)**

## Annex I: Interpretation of Terms Used

Term	Rainfall Amount (24 hrs)	Description
Light	< 5 mm	Gentle rain, drizzle.
Moderate (MOD)	5–20 mm	Steady, noticeable rain.
Heavy (HV)	21–50 mm	Intense rain, possible thunder.
Very Heavy (VHV)	> 50 mm	Prolonged rain.

Term	Area Affected	Description
Few places	< 33%	Rain in a small portion of the region.
Several places	33% to 66%	Rain in multiple but not most parts of the region.
Most places	> 66%	Rain in nearly all parts of the region.

Term	Area Affected	Description
Isolated	Less than 25%	Very few areas affected.
Scattered	25–50%	Several, but not most, areas affected.
Numerous	51–70%	Many areas affected.
Widespread	Over 70%	Almost all areas affected.

Term	Time Coverage (%)	Meaning
Occasional	Less than 25%	Happens rarely or a few times.
Intermittent	25% – 50%	Starts and stops, comes and goes.
Frequent	51% – 75%	Occurs regularly.
Very Frequent/Common	More than 75%	Happens almost all the time.

Term	Probability of Occurrence	Description
Possible	10–30%	There is low confidence.
Chance of/May	31–50%	There is moderate confidence.
Likely	51–75%	The event is more probable than not.
Expected	76–90%	There is high confidence.
Very Likely	91–99%	There is very high confidence. Almost certain.
Certain	100%	The event is guaranteed to occur.

**Note: 1 mm of rainfall is equivalent to 1 litre of rainfall per square meter.**

## Annex II: Wards Map of Kitui County

