



REPUBLIC OF KENYA
MINISTRY OF ENVIRONMENT, CLIMATE CHANGE AND FORESTRY
State Department for Environment & Climate Change
KENYA METEOROLOGICAL DEPARTMENT

Dagoretti Corner, Ngong Road, P. O. Box 30259, 00100 GPO, Nairobi, Kenya

Telephone: 254 (0) 20 3867880-7, 0724 255 153/4

E-mail: director@meteo.go.ke, info@meteo.go.ke **Website:** <https://www.meteo.go.ke>

Our Ref: MET/7/358

Date: 11th May 2026

WEEKLY WEATHER FORECAST FOR 12TH TO 18TH MAY 2026
&
REVIEW FOR 4TH TO 10TH MAY 2026

SUMMARY

Weather Forecast for 12th to 18th May 2026

- Rainfall is expected to continue in the Highlands East and West of the Rift Valley, the Lake Victoria Basin, the Rift Valley, some parts of the Coast, and Northwestern Kenya.
- Heavy rainfall events may occur in some parts of Highlands East and West of the Rift Valley, the Lake Victoria Basin, and the Rift Valley during the first half of the forecast period. The intensity is expected to decrease from 15th May 2026.

Weather Review for 4th April to 10th May 2026

- Rainfall was recorded in several parts of the country.
- The highest daytime (maximum) temperature was recorded in Northeastern Kenya.
- The lowest night-time (minimum) temperature was recorded in the Highlands East of the Rift Valley.

1.0 WEATHER FORECAST FOR 12TH TO 18TH MAY 2026

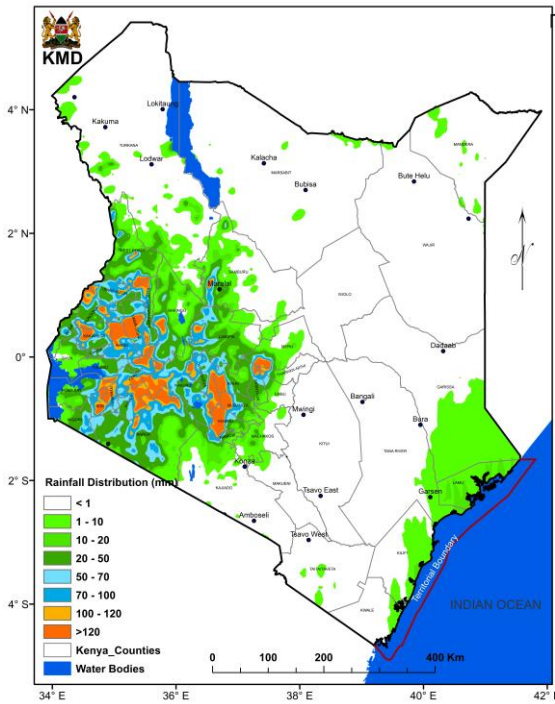


Figure 1: Forecasted Seven-Day Total Rainfall for 12th to 18th May 2026

Rainfall is expected to continue in the Highlands East and West of the Rift Valley, the Lake Victoria Basin, the Rift Valley and some parts of the Coast, and Northwestern Kenya (Figure 1). Heavy rainfall events may occur in some parts of Highlands East and West of the Rift Valley, the Lake Victoria Basin, and the Rift Valley during the first half of the forecast period. The intensity is expected to decrease from 15th May 2026.

Daytime (maximum) average temperatures of more than 30°C are expected in the Coast, parts of the Southeastern Lowlands, Northeastern and Northwestern Kenya (Figure 2).

Night-time (minimum) average temperatures are expected to be less than 10°C in some parts of the Highlands East of the Rift Valley, the Central Rift Valley and in the vicinity of Mt. Kilimanjaro (Figure 3).

WEEKLY FORECAST

Follow us on X and IG: x.com/MeteoKenya and Facebook: fb.com/KenyaMeteorologicalDepartment

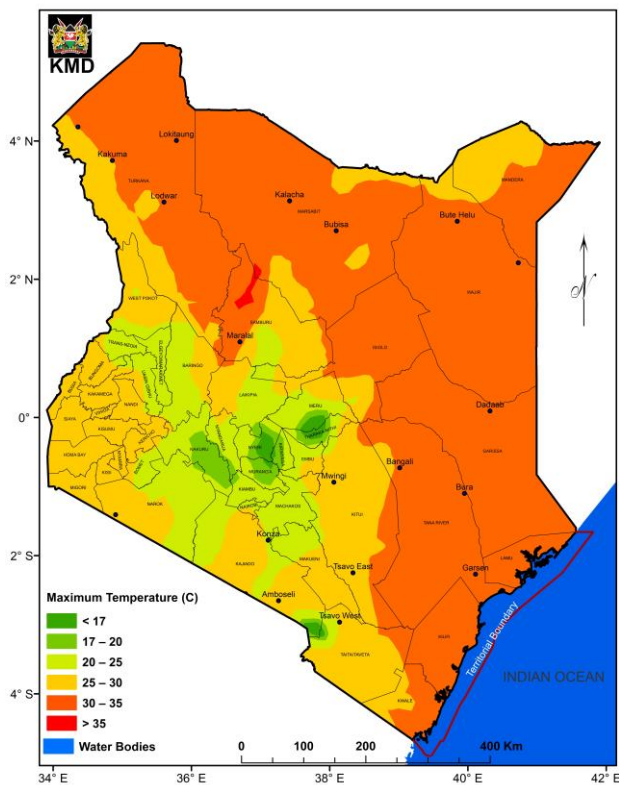


Figure 2: Forecasted Average Maximum Temperatures for 12th to 18th May 2026

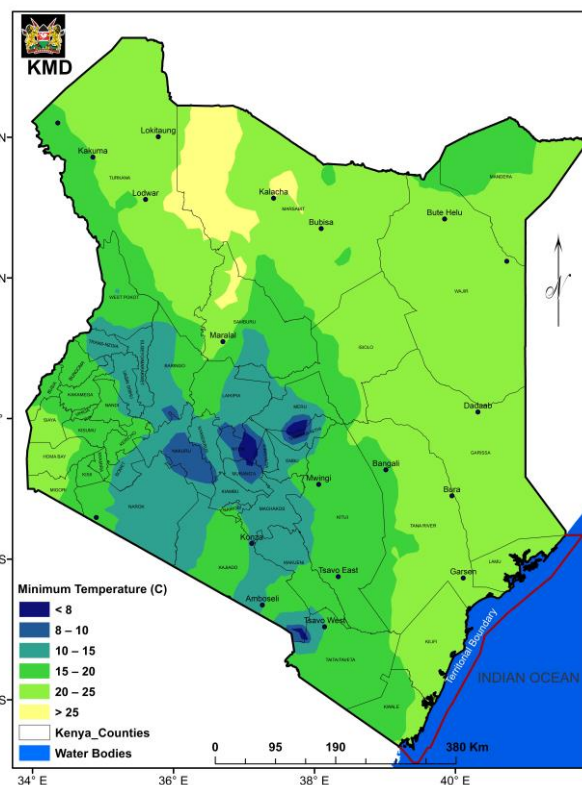


Figure 3: Forecasted Average Minimum Temperatures for 12th to 18th May 2026

1.1 DETAILED REGIONAL RAINFALL FORECAST FOR 12TH TO 18TH MAY 2026

1.1.1 *The Highlands West of the Rift Valley, the Lake Victoria Basin and the Rift Valley (Nandi, Kakamega, Vihiga, Bungoma, Siaya, Busia, Baringo, Nakuru, Trans-Nzoia, Uasin-Gishu, Elgeyo-Marakwet, West-Pokot, Kisii, Nyamira, Kericho, Bomet, Kisumu, Homabay, Migori and Narok Counties):*

Morning rains are likely to occur over few places. Afternoon showers and thunderstorms are expected over several places in the first half of the forecast period reducing to few thereafter. Night showers are likely to occur over few places.

1.1.2 *North-western Kenya (Turkana and Samburu Counties):*

Morning rains are likely to occur over few to several places during the first half of the forecast period. Afternoon and night showers are likely to occur over few places during the first half of the forecast period.

1.1.3 *The Highlands East of the Rift Valley (Nyandarua, Laikipia, Nyeri, Kirinyaga, Murang'a, Kiambu, Meru, Embu, Tharaka-Nithi and Nairobi Counties):*

Morning rains are likely to occur over few places during the first half of the forecast period. Afternoon showers and thunderstorms are expected over several places during the first half of the forecast period reducing to few thereafter. Night showers are likely to occur over few places.

1.1.4 *North-eastern Kenya (Marsabit, Mandera, Wajir, Garissa and Isiolo Counties):*

Sunny intervals are expected during the day, with partly cloudy conditions at night. However, morning rains as well as afternoon and night showers may occur over few places during the first half of the forecast period.

1.1.5 *The South-eastern lowlands (Machakos, Kitui, Makueni, Kajiado and Taita-Taveta Counties as well as the inland parts of Tana-River County):*

Sunny intervals are expected during the day, with partly cloudy conditions at night. However, morning rains as well as afternoon and night showers may occur over few places.

1.1.6 *The Coast (Mombasa, Kilifi, Lamu and Kwale Counties as well as the Tana Delta):*

Morning, afternoon and night showers are likely to occur over few places during the first half of the forecast period.

1.2 DETAILED TEMPERATURE FORECAST FOR 12TH TO 18TH MAY 2026

Expected maximum and minimum temperatures for selected cities and towns are shown in Table 1.

TABLE 1: FORECASTED MAXIMUM AND MINIMUM TEMPERATURES FOR SELECTED CITIES AND TOWNS								
CITY/TOWN	MAX (°C)	MIN (°C)	CITY/TOWN	MAX (°C)	MIN (°C)	CITY/TOWN	MAX (°C)	MIN (°C)
LODWAR	37.0	25.0	KISUMU	29.0	17.0	THIKA	29.0	16.0
MARSABIT	26.0	18.0	SUBA	30.0	19.0	MACHAKOS	26.0	13.0
MOYALE	29.0	18.0	NAKURU	26.0	14.0	MAKINDU	31.0	17.0
GARISSA	36.0	25.0	NAROK	25.0	14.0	KITUI	28.0	16.0
WAJIR	36.0	23.0	LAIKIPIA	27.0	11.0	VOI	34.0	21.0
MANDERA	38.0	22.0	NYAHURURU	24.0	08.0	LAMU	33.0	24.0
KITALE	27.0	14.0	KANGEMA	25.0	15.0	MALINDI	31.0	24.0
KAKAMEGA	29.0	16.0	NYERI	26.0	15.0	MSABAHA	31.0	24.0
ELDORET	24.0	12.0	EMBU	27.0	16.0	MTWAPA	32.0	23.0
KERICHO	26.0	12.0	MERU	25.0	15.0	MOMBASA	32.0	23.0
KISII	27.0	16.0	NAIROBI	27.0	14.0			

2.0 WEATHER REVIEW FOR 4TH TO 10TH MAY 2026

2.1 Rainfall Review

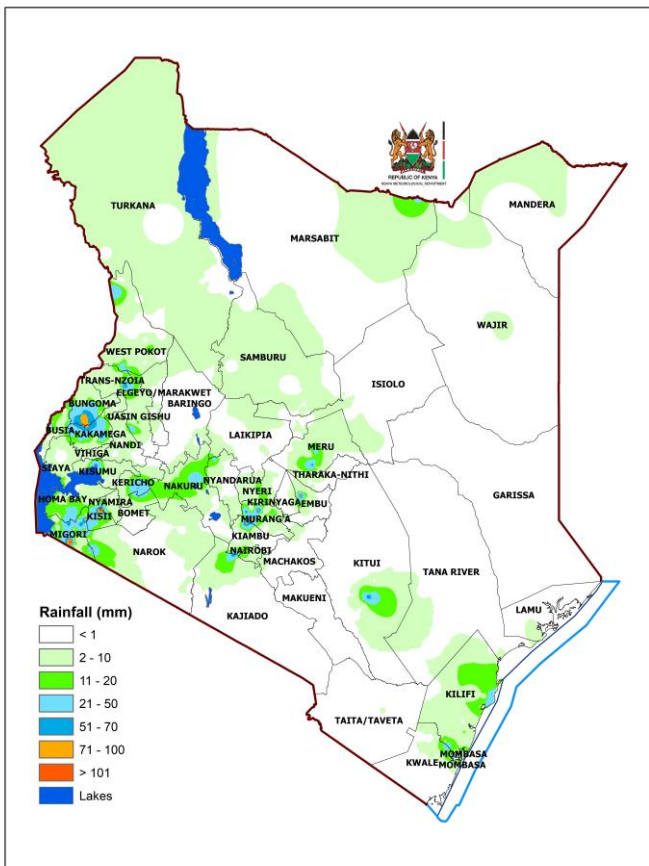


Figure 4: Observed Seven-Day Total Rainfall for 4th April to 10th May 2026

Rainfall was recorded over several parts of the country (Figures 4 and 5). Isolated heavy rainfall events occurred in a number of counties including Embu, Murang'a, Kisii, Kakamega, Migori and Kitui.

The highest seven-day rainfall total (152.2 mm) was recorded at Lela (AWS) in Migori County.

Embu Meteorological Station recorded the highest amount of rainfall within 24-hours: 107.8mm on 8th May 2026.

Comparing the 27th April to 3rd May and the 4th to 10th May 2026 review periods, it is noted that there was a decrease in rainfall amounts across several parts of the country.

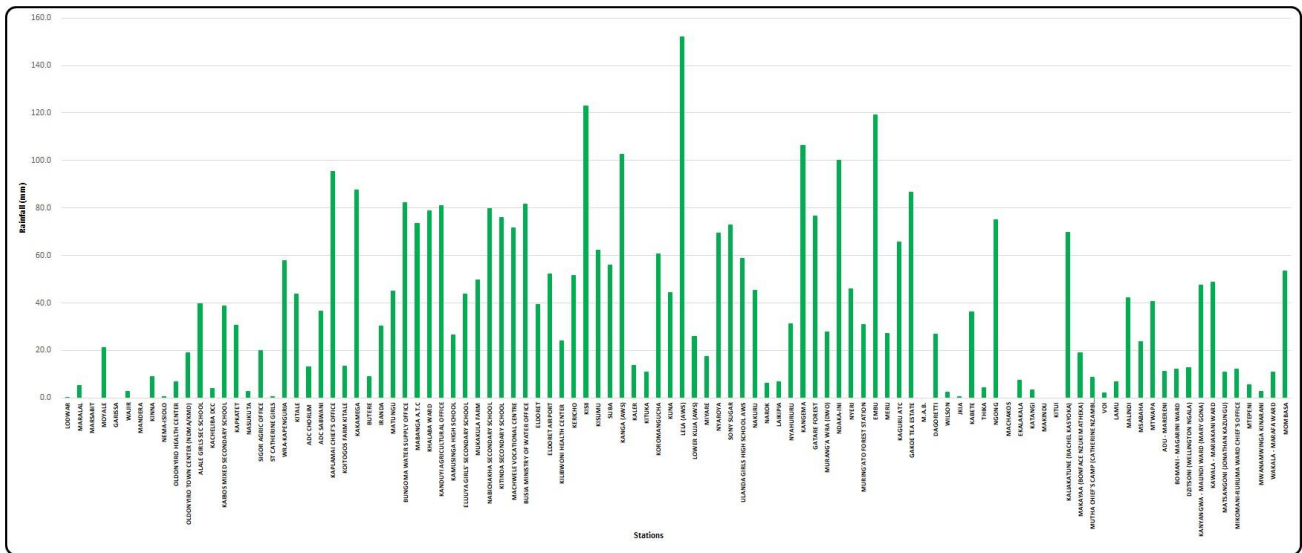


Figure 5: Observed Seven-Day Total Rainfall (per Station) for 4th to 10th May 2026

2.2 Temperature Review

Comparing the 27th April to 3rd May and the 4th to 10th May 2026 review periods, it is noted that daytime (maximum) temperatures increased in several stations in the Country except a few stations like Kangema, Garissa and a few stations over the Coast where it decreased. Night-time (minimum) temperatures slightly increased in a number of stations such as Lodwar, Kangema, Thika among others and decreased in stations like Laikipia, Nyahururu, Mandera among others.

Mandera Meteorological Station recorded the highest daily maximum temperature: 37.5°C on 9th May 2026 while Nyahururu Meteorological Station recorded the lowest daily minimum temperature: 8.4°C on 6th May 2026. The same stations recorded the highest seven-day average maximum temperature and the lowest seven-day average minimum temperature: 37.0°C and 10.1°C respectively (Figure 6).

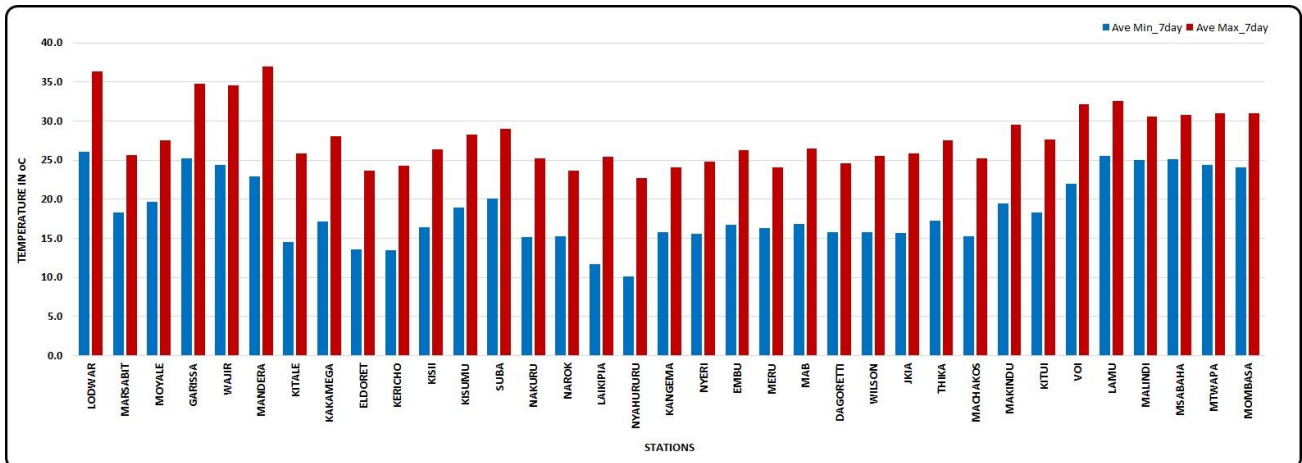



Figure 6: Seven-Day Average Maximum and Minimum Temperatures for 4th to 10th May 2026

N.B: This forecast should be used in conjunction with the daily (24-hour) and five-day forecasts issued by this Department. County specific forecasts are available from the offices of respective County Directors of Meteorological Services.


 Edward Muriuki
 Ag. DIRECTOR, KENYA METEOROLOGICAL DEPARTMENT

APPENDIX I: INTERPRETATION OF TERMS USED

Term	Rainfall Amount (24 hrs.)	Description
Light	< 5 mm	Gentle rain, drizzle.
Moderate	5–20 mm	Steady, noticeable rain.
Heavy	21–50 mm	Intense rain, possible thunder.
Very Heavy	> 50 mm	Prolonged rain, high intensity.

Term	Area Affected	Description
Few places	< 33%	Rain in a small portion of the region.
Several places	33% to 66%	Rain in multiple but not most parts of the region.
Most places	> 66%	Rain in nearly all parts of the region.

Term	Area Affected	Description
Isolated	Less than 25%	Very few areas affected.
Scattered	25–50%	Several, but not most, areas affected.
Numerous	51–70%	Many areas affected.
Widespread	Over 70%	Almost all areas affected.

Term	Time Coverage (%)	Meaning
Occasional	Less than 25%	Happens rarely or a few times.
Intermittent	25% – 50%	Starts and stops, comes and goes.
Frequent	51% – 75%	Occurs regularly.
Very Frequent / Common	More than 75%	Happens almost all the time.

Term	Probability of Occurrence	Description
Possible	10–30%	There is low confidence.
Chance of/ May	31–50%	There is moderate confidence.
Likely	51–75%	The event is more probable than not.
Expected	76–90%	There is high confidence.
Very Likely	91–99%	There is very high confidence. Almost certain.
Certain	100%	The event is guaranteed to occur.