



## KMD 10 DAY AGROMETEOROLOGICAL BULLETIN



Ref: MET/8/001/1

Issue No: 13/2026

Date: 12/05/2026

**DEKAD 12 PERIOD: 11<sup>TH</sup> – 20<sup>TH</sup> MAY 2026.**

### 1.0 HIGHLIGHTS

Rainfall is expected to continue over several parts of the country during the dekad, particularly over the Highlands East and West of the Rift Valley, the Lake Victoria Basin, the Rift Valley, parts of the Coast and Northwestern Kenya. Heavy rainfall events are likely over some areas of the Highlands, Lake Victoria Basin and the Rift Valley during the first half of the dekad, before reducing in intensity toward the later part of the period.

The anticipated rainfall is expected to maintain favorable soil moisture conditions and support crop growth and pasture regeneration across most agricultural regions. However, localized flooding, waterlogging, soil erosion and disruption of farming activities may occur in flood-prone and low-lying areas. Warm temperatures are expected over the coastal, northeastern and northwestern regions, while cooler night-time temperatures are likely over the Central Highlands and parts of the Rift Valley.

#### 1.1 Expected Weather conditions in the Next Ten days 11<sup>TH</sup> – 20<sup>TH</sup> May 2026.

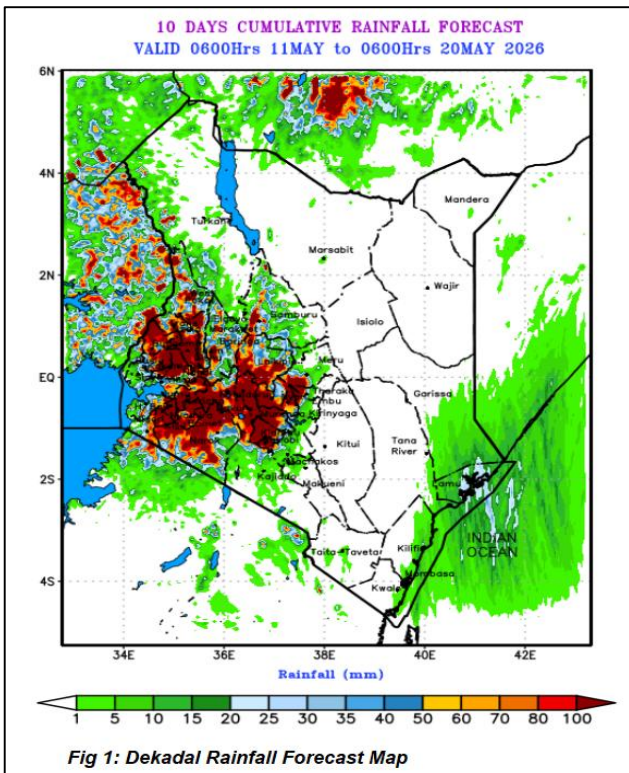
Rainfall is expected in several parts of the country, especially over the Highlands East and West of the Rift Valley, the Lake Victoria Basin, the Rift Valley, parts of the Coast and Northwestern Kenya. Heavy rainfall events are likely during the first half of the dekad over some areas of the Highlands and Lake Victoria Basin, with rainfall intensity expected to reduce after mid-May (**fig 1**).

The continued rains are expected to sustain adequate soil moisture conditions in most regions in the country. Temperatures are expected to remain above average over the coastal, northeastern and northwestern regions.

#### 1.2 General Advisory

Farmers in high rainfall areas including the Highlands, Lake Victoria Basin and parts of the Rift Valley are advised to maintain proper drainage channels, continue weeding and top dressing activities where feasible and closely monitor crops for fungal diseases and waterlogging effects associated with persistent rainfall. Farmers in flood-prone areas should avoid cultivation near riverbanks and secure harvested produce and farm inputs from flood damage

In the Southeastern lowlands and marginal agricultural areas, farmers are encouraged to conserve available soil moisture through mulching and timely weed control as rainfall distribution remains uneven. Pastoralists in arid and semi-arid regions are advised to take advantage of improved pasture and water availability while remaining alert to livestock diseases linked to wet conditions and avoiding grazing in flood-prone zones.



## 2.0 WEATHER, SOIL AND CROP CONDITIONS DURING 1<sup>ST</sup> – 10<sup>TH</sup> MAY 2026

**Precipitation:** Most stations recorded near-normal rainfall during the period under review with a notable reduction in intensity compared to previous dekad. (fig 2 & fig 3).

The highest amount of rainfall was recorded at Mwea station in the Eastern region with a total of 155.3mm.

**Cloud cover:** Most regions in the country experienced partly to mostly cloudy conditions during the period under review.

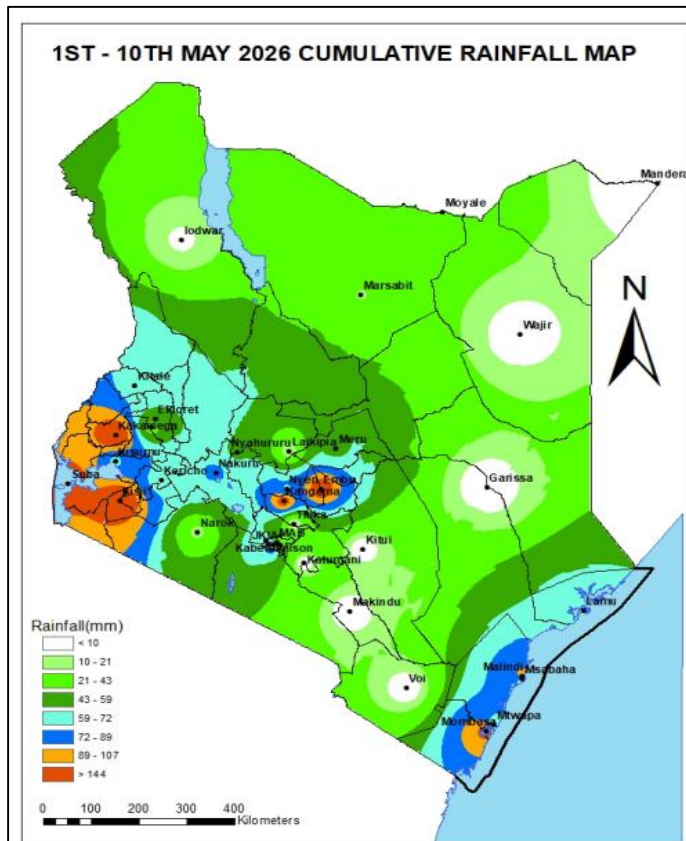


Fig 2: Dekadal Rainfall map

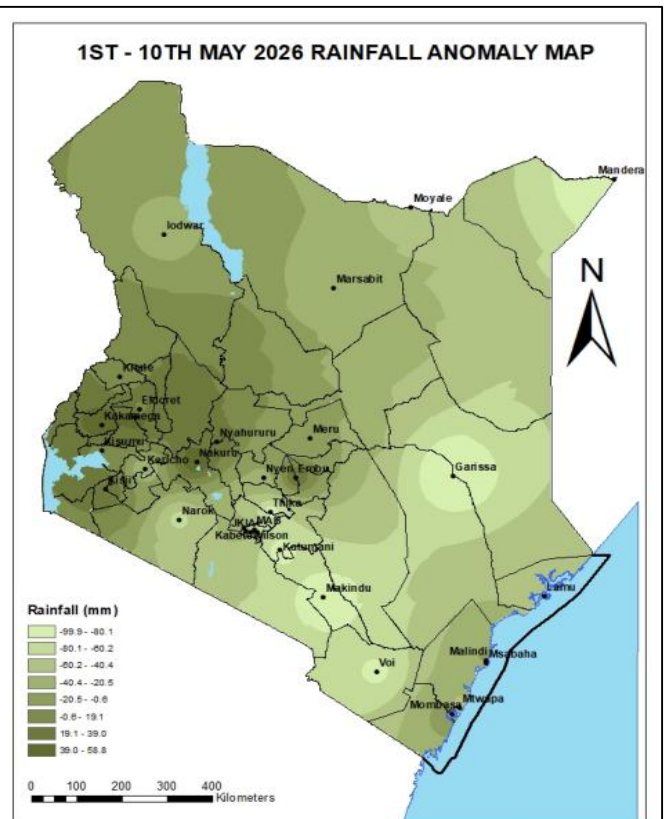
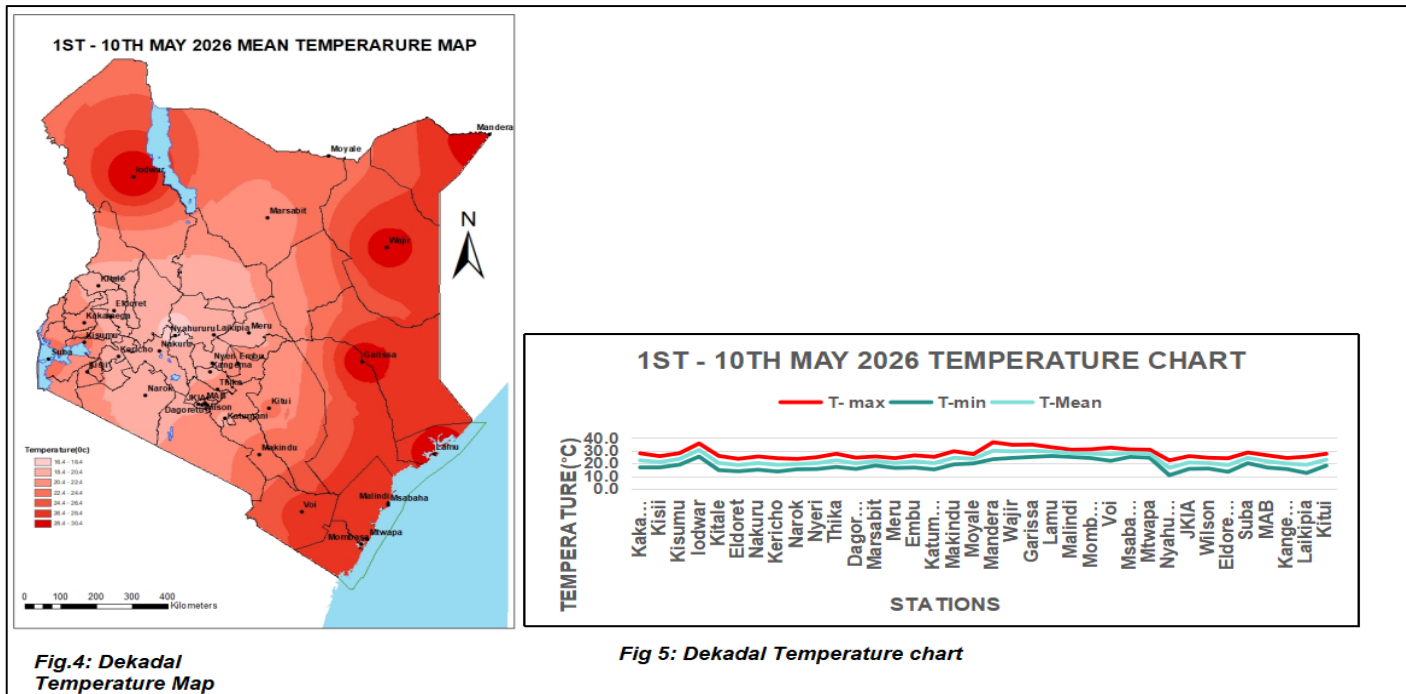


Fig 3: Dekadal Rainfall Anomaly map

**Soil Moisture:** Soil moisture conditions significantly improved following the enhanced rainfall received during the dekad

**Temperature Trends:** Mean air temperatures were slightly higher across most parts of the country during the review Period compared to the previous dekad (fig 4 & fig 5).



**REGIONAL WEATHER AND AGRICULTURAL CONDITIONS**

**1. Western and Nyanza Regions**

Most stations in the region recorded above-normal rainfall relative to the long-term mean (LTM) during the dekad.

**Kakamega:** Recorded 90.88mm of rainfall during the dekad, mean air temperature increased slightly from 22.2°C to 22.3°C. Beans are at the maturity stage.

**Kisii:** Received 137.4mm of rainfall. Mean air temperature slightly increased from 20.5°C to 21.0°C. Crops have germinated and are doing well due to the enhanced rainfall experienced in the region.

**2. Rift Valley Region**

Most stations in the region recorded near-normal rainfall relative to the Long-Term Mean (LTM) for the dekad, though rainfall amounts were significantly lower compared to the previous dekad.

**Kericho:** Recorded 65.02 mm of rainfall; mean air temperature slightly increased from 18.5°C to 18.8°C. Beans are at the maturity stage but have been affected by excess rainfall, while maize is performing fairly well.

**Kitale:** Recorded 139.41mm of rainfall during the dekad; mean air temperature slightly increased from 20.1°C to 20.2°C. Crops are doing well.

**Eldoret:** Recorded 60.8 mm of rainfall; mean air temperature remained relatively stable at about 18.5°C during the dekad.

**3. Central and Nairobi Region**

Several stations within the region recorded relatively lower rainfall amounts compared to the Long-Term Average

**Thika:** Recorded 4.21 mm of rainfall; mean air temperature slightly decreased from 22.3°C to 21.9°C. crops are doing well with some farmers still weeding their crops.

**Dagoretti:** Recorded 60.81mm of rainfall, and mean air temperature slightly increased from 22.1°C to 20.1°C. Beans are at flowering stage.

**Kabete:** Recorded 58.2mm of rainfall. Crops are doing well; beans have been affected by the heavy rainfall.

**Nyeri:** Recorded rainfall totaled 71.0 mm, while the mean air temperature remained relatively stable at approximately 20.2°C. Beans are currently at the flowering stage, whereas most farms have been affected by maize stalk borer infestation.

#### 4. Eastern Region

Most stations across the region recorded near-normal rainfall amounts.

**Meru:** Recorded 57.mm of rainfall, mean temperature remained relatively stabled at approximately 20.2°C. Crops are performing well due to adequate rainfall.

**Embu:** Recorded 129.71 mm of rainfall; Mean air temperature maintained at 21.3°C. Maize crop has passed 9<sup>th</sup> leaf and is doing well due to sufficient rainfall, bean crop manifest fair growth rate.

**Katumani:** Recorded 81.1mm; the mean air temperature decreased from to 20.5°C to 20.2°C. Crops are at post emergence stage and they are doing well.

#### 5. Coastal Region

Most stations in the region recorded below normal rainfall compared to the LTM.

**Mtwapa:** Recorded 101.51 mm of rainfall; Mean temperature decreased from 27.5°C to 21.5°C. Crops are doing well.

**Msabaha:** Recorded 50.01mm of rainfall mean temperature remained relatively stabled at approximately 28.0°C.

#### 6. Northeastern Region

Most stations in the region recorded below-normal rainfall during the period under review compared to the long-term mean.

Marsabit recorded the highest rainfall amount at 21.3 mm, followed by Moyale with 31.5 mm. Wajir registered 2.9 mm, while Garissa did not record any rainfall during the period.



---

Paul Oloo

For: Ag. Director Meteorological Services

For inquiries or any clarification, please use the email below

**E-mail: [agrometkenya@gmail.com](mailto:agrometkenya@gmail.com)**