



REPUBLIC OF KENYA
MINISTRY OF ENVIRONMENT, CLIMATE CHANGE AND FORESTRY
State Department for Environment & Climate Change
KENYA METEOROLOGICAL DEPARTMENT

Dagoretti Corner, Ngong Road, P. O. Box 30259, 00100 GPO, Nairobi, Kenya

Telephone: 254 (0) 20 3867880-7, 0724 255 153/4

E-mail: director@meteo.go.ke, info@meteo.go.ke **Website:** <https://www.meteo.go.ke>

Our Ref: MET/7/360

Date: 25th May 2026

WEEKLY WEATHER FORECAST FOR 26TH MAY TO 1ST JUNE 2026
&
REVIEW FOR 18TH TO 24TH MAY 2026

SUMMARY

Weather Forecast for 26th May to 1st Jun 2026

- *Rainfall is expected to continue in the Highlands East and West of the Rift Valley, the Lake Victoria Basin, the South Rift Valley, the Coast and some parts of the Northeastern Kenya.*
- *Heavy rainfall events may occur in some parts of the Coast.*

Weather Review for 18th to 24th May 2026

- *Rainfall was recorded in a few parts of the country.*
- *The highest daytime (maximum) temperature was recorded in Northeastern Kenya.*
- *The lowest night-time (minimum) temperature was recorded in the Highlands East of the Rift Valley.*

1.0 WEATHER FORECAST FOR 26TH MAY TO 1ST JUNE 2026

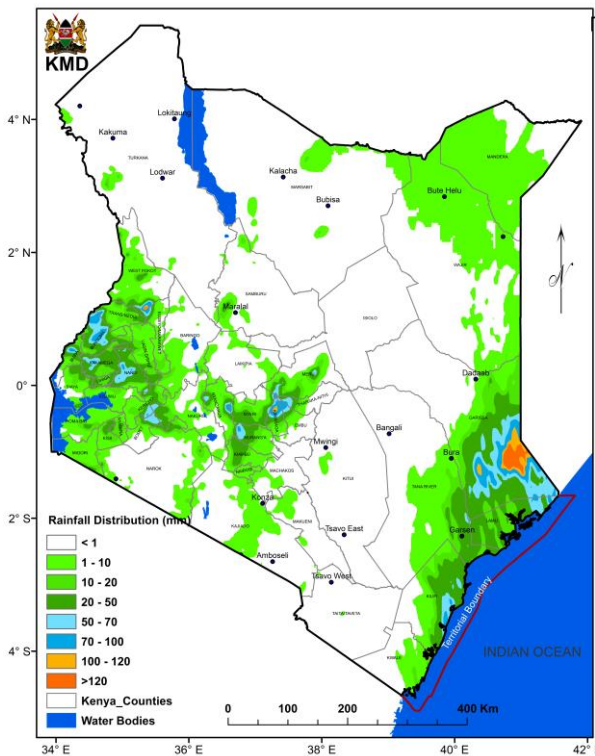


Figure 1: Forecasted Seven-Day Total Rainfall for 26th May to 1st June 2026

Rainfall is expected to continue in the Highlands East and West of the Rift Valley, the Lake Victoria Basin, the South Rift Valley, the Coast and some parts of the Northeastern Kenya (Figure 1).

Daytime (maximum) average temperatures of more than 30°C are expected in the Coast, some parts of the Southeastern Lowlands, Northeastern and Northwestern Kenya (Figure 2).

Night-time (minimum) average temperatures are expected to be less than 10°C in a few areas in the Highlands East of the Rift Valley, the Central Rift Valley and in the vicinity of Mt. Kilimanjaro (Figure 3).

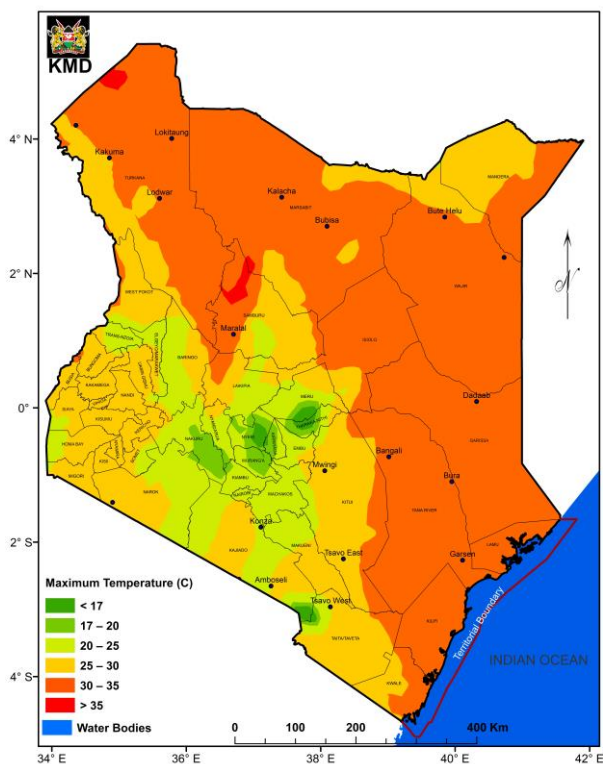


Figure 2: Forecasted Average Maximum Temperatures for 26th May to 1st June 2026

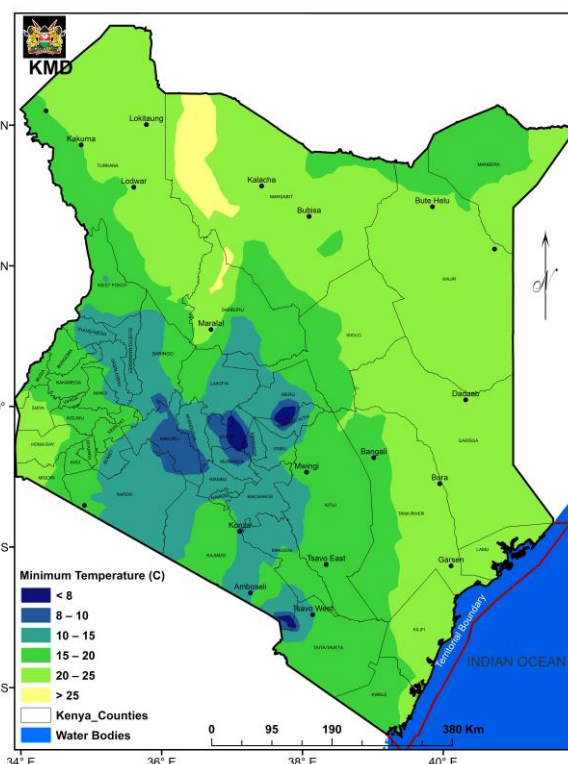


Figure 3: Forecasted Average Minimum Temperatures for 26th May to 1st June 2026

1.1 DETAILED REGIONAL RAINFALL FORECAST FOR 26TH MAY TO 1ST JUNE 2026

1.1.1 *The Highlands West of the Rift Valley, the Lake Victoria Basin and the Rift Valley (Nandi, Kakamega, Vihiga, Bungoma, Siaya, Busia, Baringo, Nakuru, Trans-Nzoia, Uasin-Gishu, Elgeyo-Marakwet, West-Pokot, Kisii, Nyamira, Kericho, Bomet, Kisumu, Homabay, Migori and Narok Counties):*

Sunny intervals are expected in the mornings though occasional rains may occur over few places. Afternoon and night showers and thunderstorms are likely to occur over few places.

1.1.2 *North-western Kenya (Turkana and Samburu Counties):*

Sunny intervals are expected during the day while nights are likely to be partly cloudy.

1.1.3 *The Highlands East of the Rift Valley (Nyandarua, Laikipia, Nyeri, Kirinyaga, Murang'a, Kiambu, Meru, Embu, Tharaka-Nithi and Nairobi Counties):*

Mornings are likely to be cloudy, with occasional rains over few places, giving way to sunny intervals. Occasional afternoon and night showers are expected over few places.

1.1.4 *North-eastern Kenya (Marsabit, Mandera, Wajir, Garissa and Isiolo Counties):*

Sunny intervals are expected during the day, with partly cloudy conditions at night. However, morning rains as well as afternoon and night showers may occur over few places during the second half of the forecast period.

1.1.5 *The South-eastern lowlands (Machakos, Kitui, Makueni, Kajiado and Taita-Taveta Counties as well as the inland parts of Tana-River County):*

Sunny intervals are expected during the day, with partly cloudy conditions at night. However, afternoon showers may occur over few places.

1.1.6 *The Coast (Mombasa, Kilifi, Lamu and Kwale Counties as well as the Tana Delta):*

Occasional morning, afternoon and night showers are expected over few places occasionally spreading to several places.

1.2 DETAILED TEMPERATURE FORECAST FOR 26TH MAY TO 1ST JUNE 2026

Expected maximum and minimum temperatures for selected cities and towns are shown in Table 1.

TABLE 1: FORECASTED MAXIMUM AND MINIMUM TEMPERATURES FOR SELECTED CITIES AND TOWNS								
CITY/TOWN	MAX (°C)	MIN (°C)	CITY/TOWN	MAX (°C)	MIN (°C)	CITY/TOWN	MAX (°C)	MIN (°C)
LODWAR	37.0	24.0	KISUMU	30.0	19.0	THIKA	30.0	16.0
MARSABIT	27.0	18.0	SUBA	31.0	18.0	MACHAKOS	26.0	15.0
MOYALE	28.0	19.0	NAKURU	27.0	14.0	MAKINDU	32.0	17.0
GARISSA	37.0	25.0	NAROK	26.0	13.0	KITUI	30.0	16.0
WAJIR	37.0	23.0	LAIKIPIA	28.0	12.0	VOI	35.0	20.0
MANDERA	38.0	22.0	NYAHURURU	23.0	08.0	LAMU	33.0	25.0
KITALE	27.0	13.0	KANGEMA	25.0	16.0	MALINDI	32.0	25.0
KAKAMEGA	29.0	16.0	NYERI	26.0	15.0	MSABAHA	32.0	25.0
ELDORET	23.0	10.0	EMBU	26.0	15.0	MTWAPA	32.0	24.0
KERICHO	24.0	11.0	MERU	27.0	14.0	MOMBASA	31.0	23.0
KISII	26.0	16.0	NAIROBI	26.0	13.0			

2.0 WEATHER REVIEW FOR 18TH TO 24TH MAY 2026

2.1 Rainfall Review

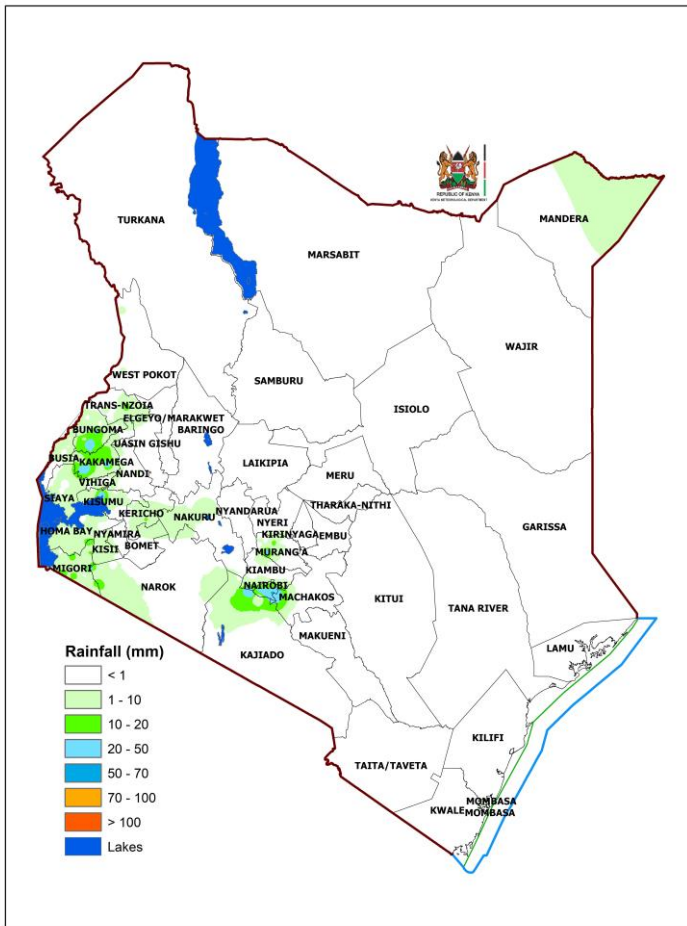


Figure 4: Observed Seven-Day Total Rainfall for 18th to 24th May 2026

Rainfall was recorded in the Highlands East and West of the Rift Valley, the Lake Victoria Basin and parts of North-eastern Kenya, as shown (Figures 4 and 5).

The highest seven-day rainfall total (61.5 mm) was recorded at Jomo Kenyatta International Airport Meteorological Station in Nairobi County.

The same station recorded the highest amount of rainfall within 24-hours: 61.5 mm on 21st May 2026.

Comparing the 11th to 17th and the 18th to 24th May 2026 review periods, it is noted that rainfall amounts significantly decreased in most parts of the Country.

APPENDIX I: INTERPRETATION OF TERMS USED

Term	Rainfall Amount (24 hrs.)	Description
Light	< 5 mm	Gentle rain, drizzle.
Moderate	5–20 mm	Steady, noticeable rain.
Heavy	21–50 mm	Intense rain, possible thunder.
Very Heavy	> 50 mm	Prolonged rain, high intensity.

Term	Area Affected	Description
Few places	< 33%	Rain in a small portion of the region.
Several places	33% to 66%	Rain in multiple but not most parts of the region.
Most places	> 66%	Rain in nearly all parts of the region.

Term	Area Affected	Description
Isolated	Less than 25%	Very few areas affected.
Scattered	25–50%	Several, but not most, areas affected.
Numerous	51–70%	Many areas affected.
Widespread	Over 70%	Almost all areas affected.

Term	Time Coverage (%)	Meaning
Occasional	Less than 25%	Happens rarely or a few times.
Intermittent	25% – 50%	Starts and stops, comes and goes.
Frequent	51% – 75%	Occurs regularly.
Very Frequent / Common	More than 75%	Happens almost all the time.

Term	Probability of Occurrence	Description
Possible	10–30%	There is low confidence.
Chance of/ May	31–50%	There is moderate confidence.
Likely	51–75%	The event is more probable than not.
Expected	76–90%	There is high confidence.
Very Likely	91–99%	There is very high confidence. Almost certain.
Certain	100%	The event is guaranteed to occur.