



REPUBLIC OF KENYA
MINISTRY OF ENVIRONMENT, CLIMATE CHANGE AND FORESTRY
KENYA METEOROLOGICAL DEPARTMENT

Dagoretti Corner, Ngong Road, P. O. Box 30259, 00100 GPO, Nairobi, Kenya
Telephone: 254 (0) 20 3867880-7, **Fax:** 254 (0) 20 3876955/3877373/3867888,
e-mail: director@meteo.go.ke, info@meteo.go.ke **Website:** <http://www.meteo.go.ke>

REF.NO: KMD/FCST/06-2026/MARINE/23

Date: Issued on 5th June, 2026

7-Day Marine Forecast for the Kenya Coast and Off Shore Areas
Along the Western Indian Ocean Region
Validity: 06/06/2026 - 12/06/2026

1.0 GENERAL OUTLOOK

1.1 Wind Speed & Direction:

South-Easterly to South-Westerly winds are expected over Somalia waters with wind speeds of 07 to 24 knots (3.5-12 m/s) throughout the forecast period.

East-North-Easterly to South-Westerly winds are expected over Kenya and Tanzania waters with wind speeds of 04 to 19 knots (02-9.5 m/s) throughout the forecast period.

1.2 Sig. Wave Height and Direction:

Easterly to South-South-westerly waves are expected over Somalia, Kenya, and Tanzania waters with wave heights of 0.2–2.5m (\approx 0.6–7.5ft) throughout the forecast period.

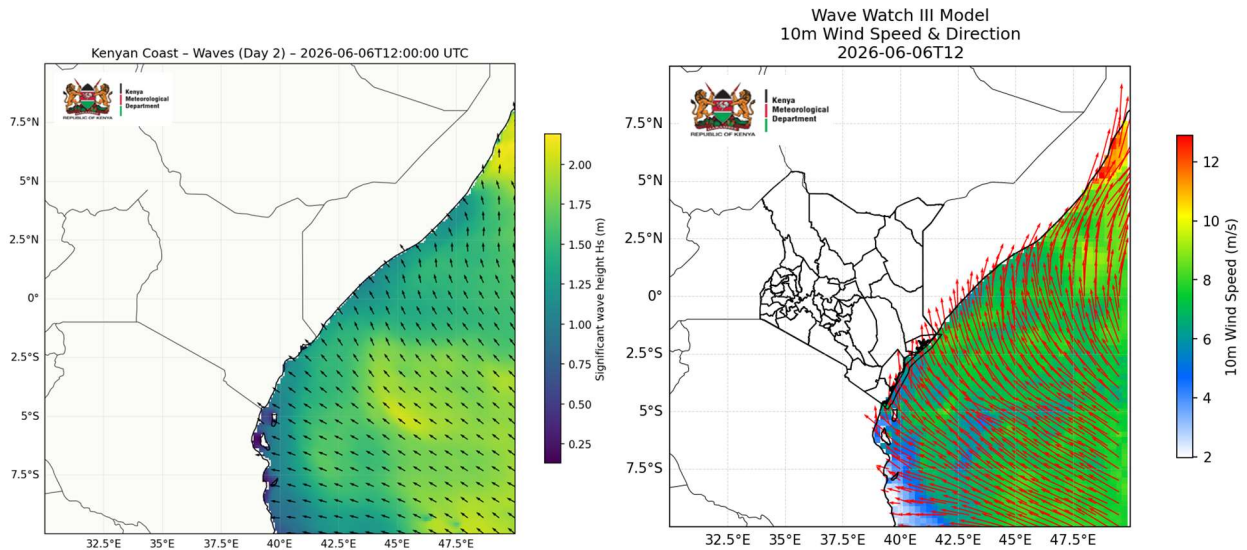
1.3 Sea condition

- Gentle breeze to strong breeze with wind speeds of 3.5–12m/s (07 to 24 Knots) expected over Somalia waters throughout the forecast period.
- Light breeze to fresh breeze with wind speeds of 02-9.5m/s (04 to 19 Knots) expected Kenya, and Tanzania waters throughout the forecast period.
- Slight to moderate sea condition with wave heights of 0.2–2.5m (\approx 0.6–7.5ft) expected over the Somalia, Kenya and Tanzania waters throughout the forecast period.

2.0 WINDS AND SIGNIFICANT WAVE HEIGHTS FORECAST FOR THE PERIOD 6TH JUNE, 2026 TO 12TH JUNE, 2026.

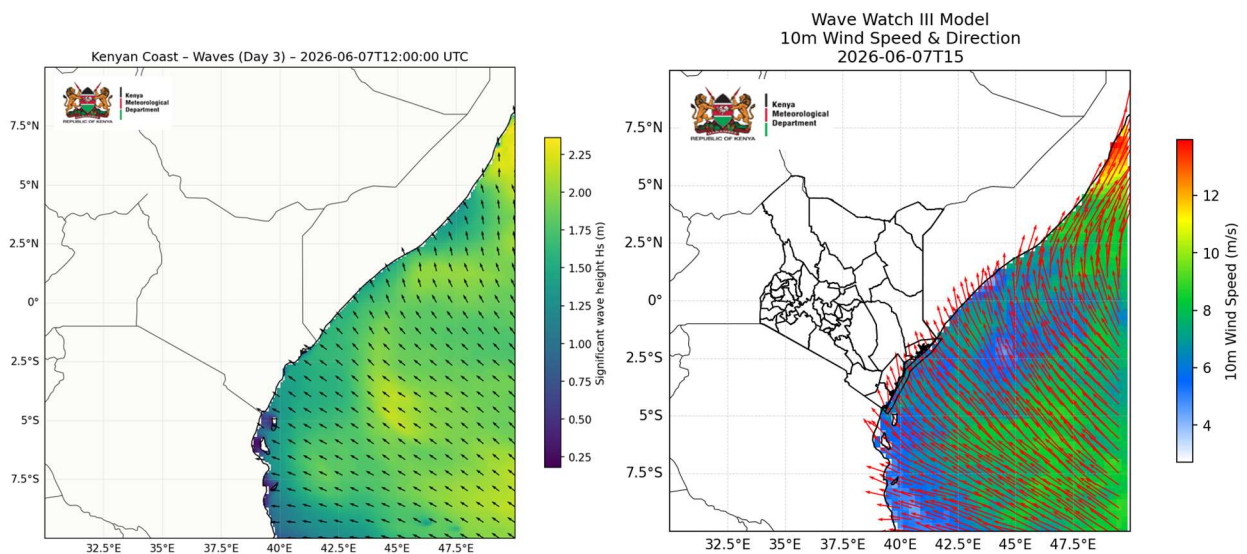
2.1 Saturday 6th June, 2026: Significant Wave Height and Wind Speed (Wave Scale in Meters; Wind Scale in m/s)

Wave height: 0.25 m to 2.0m (≈ 0.75 – 6.0ft) 10m Winds: 06-22 knots (≈ 03 – 11m/s)



2.2 Sunday 7th June, 2026: Significant Wave Height and Wind Speed (Wave Scale in Meters; Wind Scale in m/s)

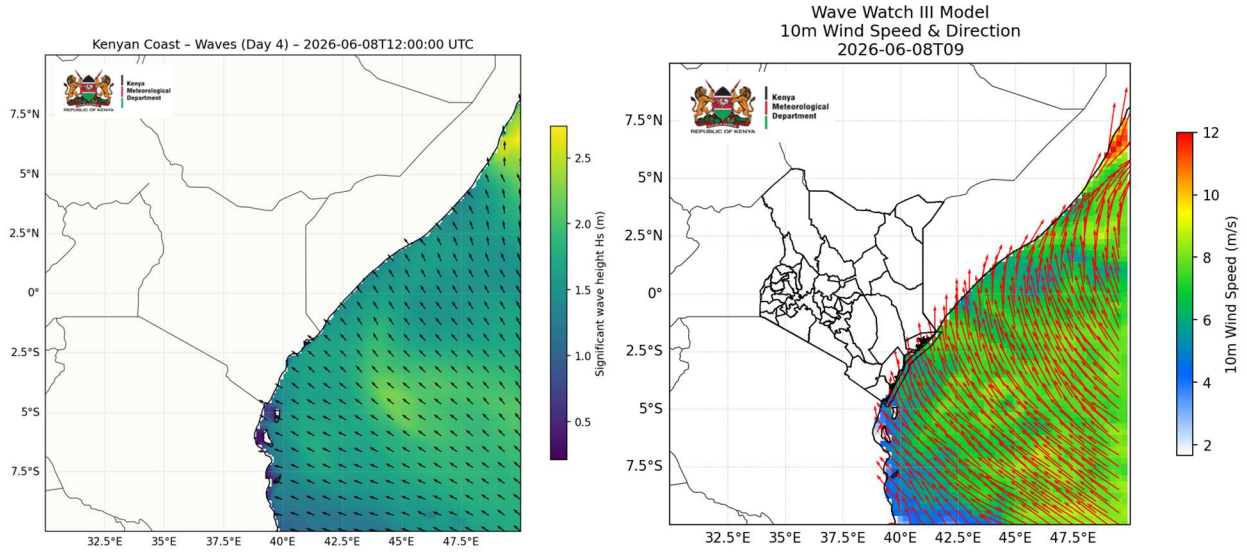
Wave height: 0.25 m to 2.0m (≈ 0.675 – 6.0 ft) 10m Winds: 04-24 knots (≈ 2 – 12m/s)



2.3 Monday 8th June, 2026: Significant Wave Height and Wind Speed (Wave Scale in Meters; Wind Scale in m/s)

Wave height: 0.4 m to 2.5m (\approx 1.2– 7.5ft)

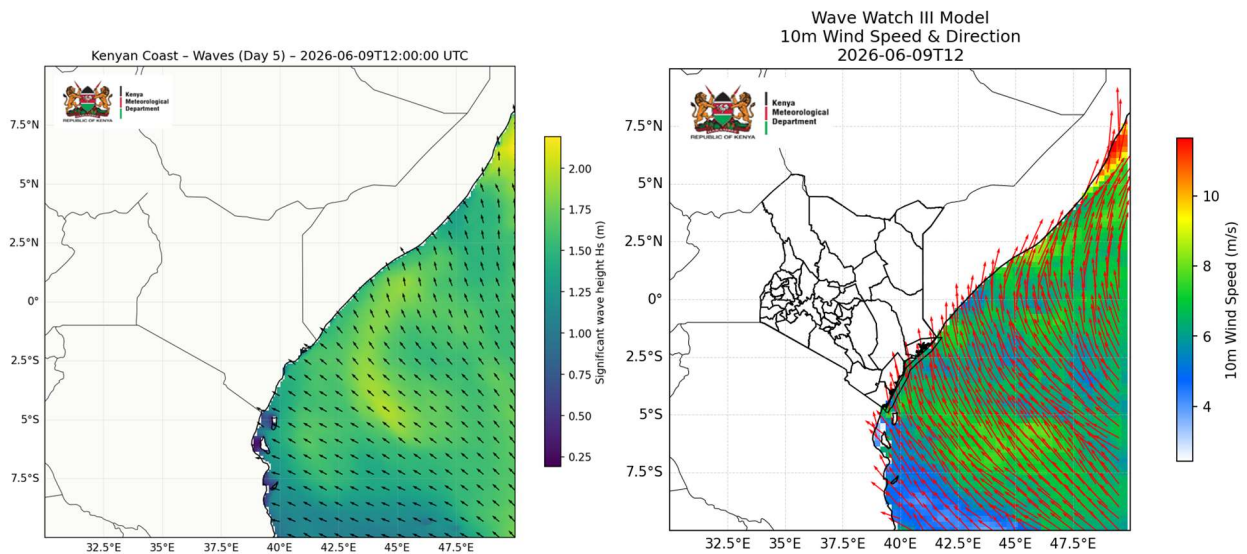
10m Winds: 08-24knots (\approx 4 – 12m/s)



2.4 Tuesday 9th June, 2026: Significant Wave Height and Wind Speed (Wave Scale in Meters; Wind Scale in m/s)

Wave height: 0.4 m to 2.5m (\approx 1.2– 7.5ft)

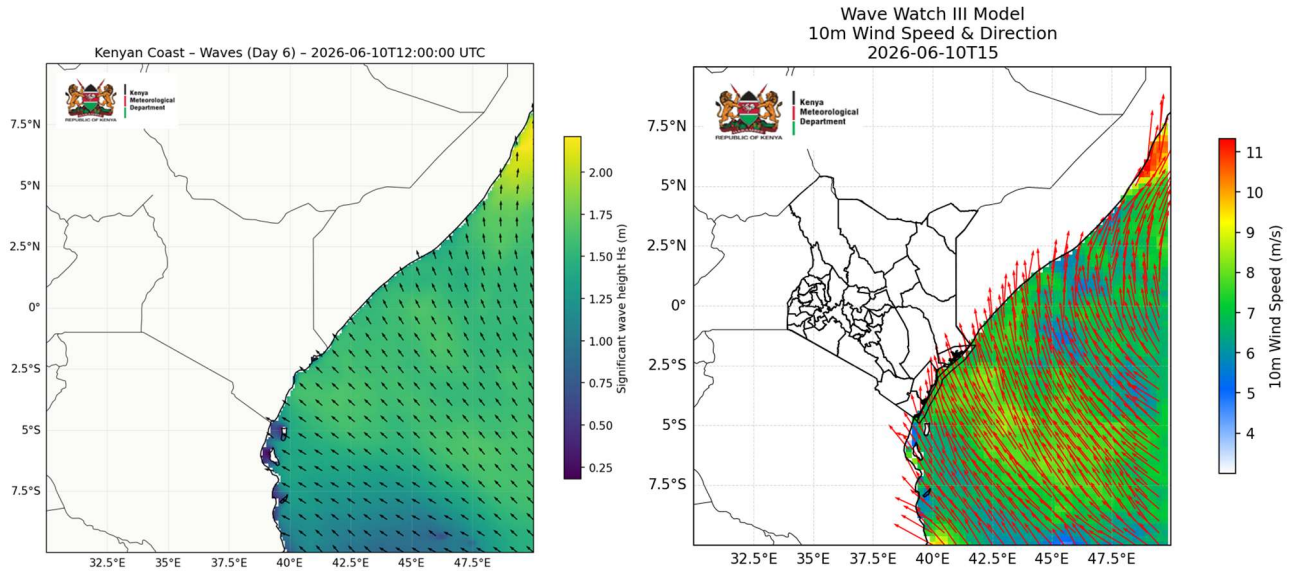
10m Winds: 06-20 knots (\approx 03 – 10m/s)



2.5 Wednesday 10th June, 2026: Significant Wave Height and Wind Speed (Wave Scale in Meters; Wind Scale in m/s)

Wave height: 0.25 m to 2.3m (\approx 0.75- 6.9ft)

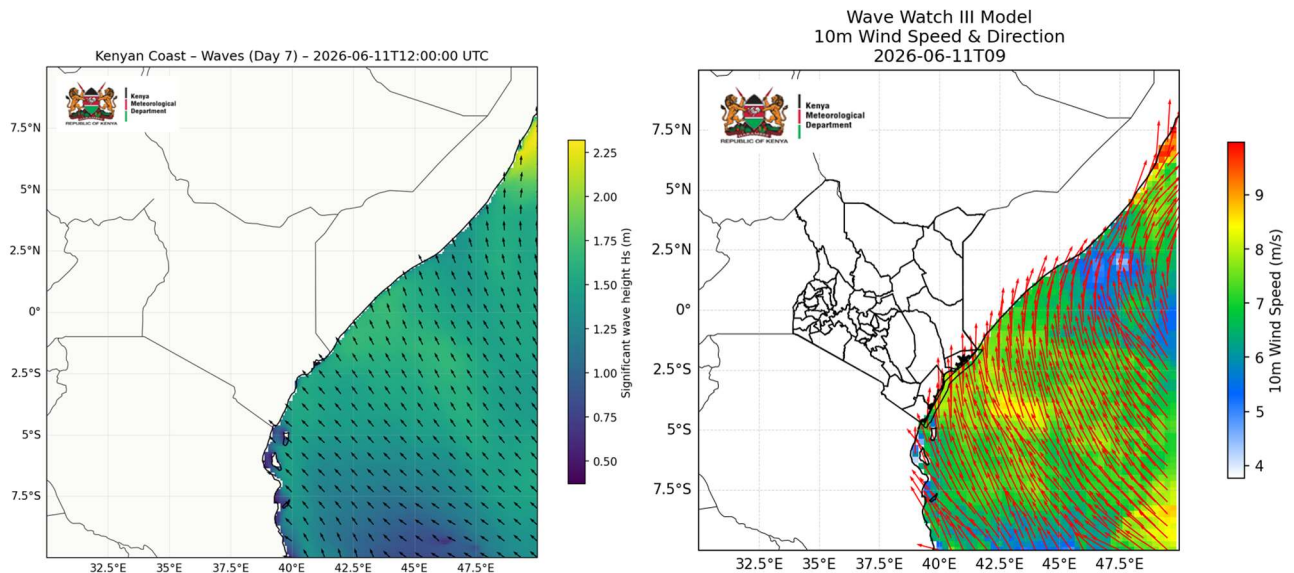
10m Winds: 04-20 knots (\approx 02– 10 m/s)



2.6 Thursday 11th June, 2026: Significant Wave Height and Wind Speed (Wave Scale in Meters; Wind Scale in m/s)

Wave height: 0.2 m to 1.8m (\approx 0.6– 5.4ft)

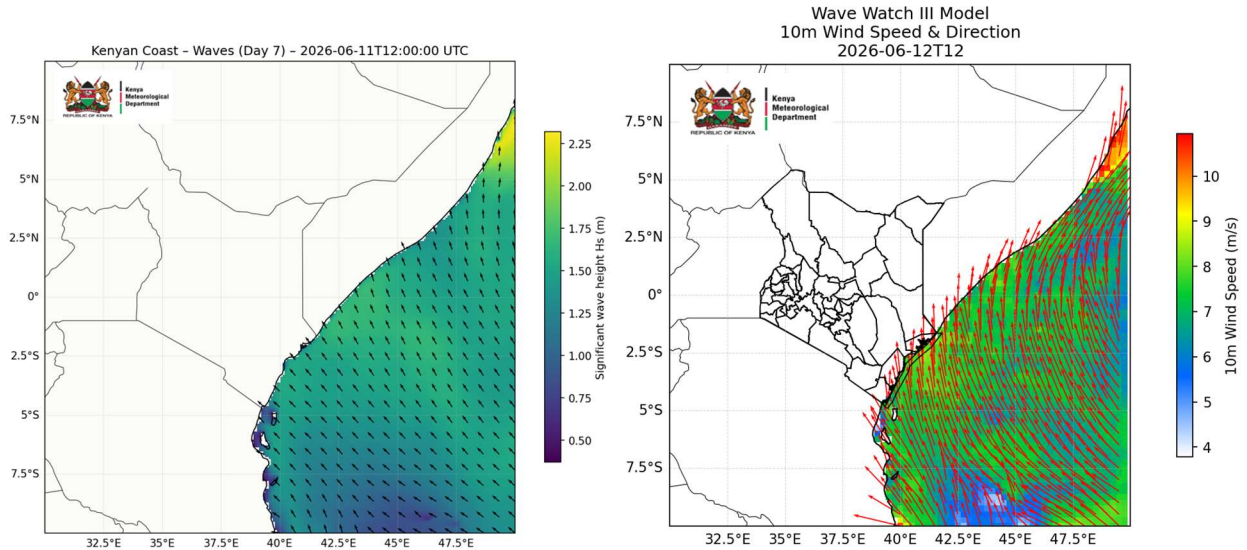
10m Winds: 08-22 knots (\approx 4– 11 m/s)



2.7 Friday 12th June, 2026: Significant Wave Height and Wind Speed (Wave Scale in Meters; Wind Scale in m/s)

Wave height: 0.25 m to 2.0m (\approx 0.675– 6.0ft)

10m Winds: 04 -20 knots (\approx 2– 10m/s)

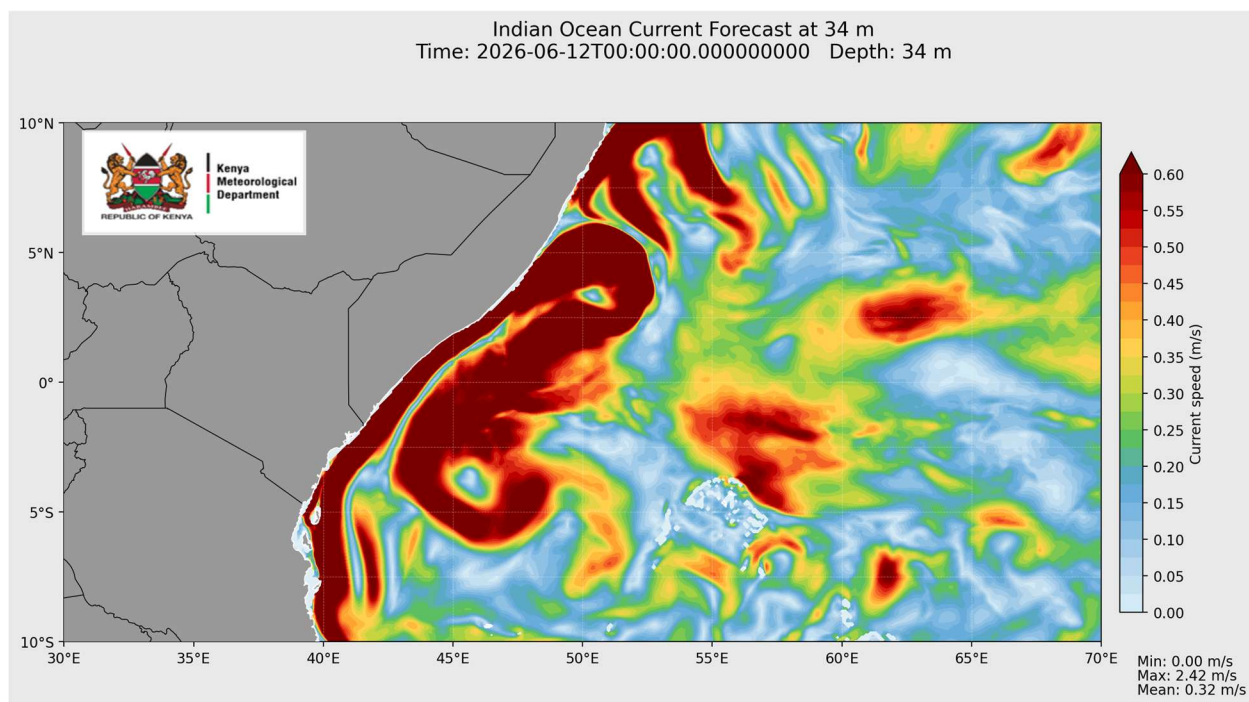


3.0 TIDE FORECAST VALID FROM 6TH JUNE, 2026 TO 12TH JUNE, 2026.

Date	Description	High Tide		Low Tide	
		Time	Height	Time	Height
Sat 6 th June, 2026	1 st Tide	07:47 AM	2.58 m	01:33 AM	0.79 m
	2 nd Tide	07:49 PM	2.87 m	01:29 PM	1.13 m
Sun 7 th June, 2026	1 st Tide	08:37 AM	2.55 m	02:16 AM	0.89 m
	2 nd Tide	08:40 PM	2.69 m	02:24 PM	1.24 m
Mon 8 th June, 2026	1 st Tide	09:36 AM	2.56 m	03:06 AM	0.98 m
	2 nd Tide	09:43 PM	2.53 m	03:35 PM	1.30 m
Tue 9 th June, 2026	1 st Tide	10:40 AM	2.96 m	03:48 AM	1.17 m
	2 nd Tide	10:56 PM	2.79 m	04:38 PM	1.43 m

Wed 10th June, 2026	1st Tide	11:50 AM	2.81 m	05:10 AM	1.05 m
	2nd Tide			06:19 PM	1.11 m
Thur 11th June, 2026	1st Tide	12:17 AM	2.44 m	06:14 AM	0.99 m
	2nd Tide	12.53 PM	3.04 M	07:25 PM	0.88 m
Fri 12th June, 2026	1st Tide	1:26 AM	2.53 m	07:13 AM	0.87 m
	2nd Tide	1.49 PM	3.29 M	08:21 PM	0.64 m

4.0 7 DAYS OCEAN SURFACE CURRENT IN METERS PER SECONDS (M/S) FORECAST VALID 06/06/2026 TO 12/06/2026



KEY ON SEA STATE

WAVE HEIGHT RANGE (Meters)	DESCRIPTION	IMPACT
0.6 – 1.0 m (≈ 1.8 – 3.0 ft)	Slight	Conditions suitable for Marine activities
1.0 – 1.9 m (≈ 3.0 – 5.7 ft)	Slight – Moderate	
2.0 – 2.9 m (≈ 6.0 – 8.7 ft)	Moderate-Rough	Caution on operating marine activities
3.0 – 4.0 m (≈ 9.0 – 12.0 ft)	Rough	Warning in place!!!! Warning in place and marine activities on hold
4.1 – 5.5 m (≈ 12.3 – 16.5 ft)	Very Rough	

KEY ON SEA STATE

WIND	RANGE	DESCRIPTIONS	IMPACT
	< 1 – 7 Knots	Calm to light breeze	1 – 6 knots, the Ocean is relatively calm with very little disturbance. Suitable for Marine operations
	7 – 21 Knots	Gentle breeze to fresh breeze	7 – 17 knots, small boats are likely to be filled with water sprays and become unstable. Caution in carrying out marine activities
	22 – ≥34 Knots	Strong breeze to extremely strong breeze	More than 21 knots, the ocean state is very much disturbed and the prevailing conditions are dangerous for marine operations. Warning in place!!!!

N.B: This forecast should be used in conjunction with the daily marine forecast issued by this Department.

In concurrence with outputs from relevant marine data platforms, acknowledgement is fully accorded to: ESSO- Indian National Centre for Ocean Information Services (INCOIS), mercator-ocean.fr, COPERNICUS Marine Environment Monitoring Service (CMEMS) and other related sources.

PETER MUGI MURIITHI
FOR DIRECTOR OF KENYA METEOROLOGICAL DEPARTMENT