



REPUBLIC OF KENYA
MINISTRY OF ENVIRONMENT, CLIMATE CHANGE AND FORESTRY
State Department for Environment & Climate Change
KENYA METEOROLOGICAL DEPARTMENT

Dagoretti Corner, Ngong Road, P. O. Box 30259, 00100 GPO, Nairobi, Kenya

Telephone: 254 (0) 20 3867880-7, 0724 255 153/4

E-mail: director@meteo.go.ke, info@meteo.go.ke **Website:** <https://www.meteo.go.ke>

Our Ref: MET/7/363

Date: 8th June 2026

WEEKLY WEATHER FORECAST FOR 9TH TO 15TH JUNE 2026
&
REVIEW FOR 1ST TO 7TH JUNE 2026

SUMMARY

Weather Forecast for 9th to 15th June 2026

- Most parts of the country are expected to be generally dry. However, some parts of the Highlands East and West of the Rift Valley and the Coast may receive rainfall.
- Intermittent cool and cloudy conditions are expected in some parts of the Highlands East and West of the Rift Valley, the Southeastern Lowlands, the Rift Valley & Northeastern Kenya.

Weather Review for 1st to 7th June 2026

- Most parts of the country were dry. Rainfall was recorded in a few areas in the Highlands West of the Rift Valley, the Lake Victoria Basin, the Rift Valley and the Coast.
- Mandera Meteorological Station recorded the highest daily maximum temperature: 39.1°C on 6th June 2026.
- Nyahururu Meteorological Station recorded the lowest daily minimum temperature: 5.9°C on 5th June 2026.

1.0 WEATHER FORECAST FOR 9TH TO 15TH JUNE 2026

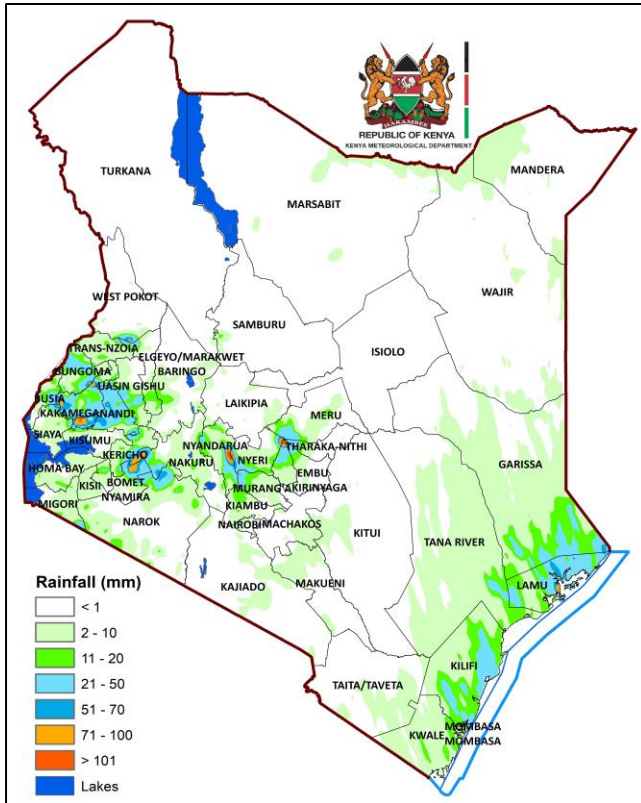


Figure 1: Forecasted Seven-Day Total Rainfall for 9th to 15th June 2026

Most parts of the country are expected to be generally dry. However, some parts of the Highlands East and West of the Rift Valley and the Coast may receive rainfall (Figure 1).

Intermittent cool and cloudy conditions are expected in some parts of the Highlands East and West of the Rift Valley, the Southeastern Lowlands, the Rift Valley & Northeastern Kenya.

Daytime (maximum) average temperatures of more than 30°C are expected in some parts of the Coast, the Southeastern Lowlands, the Highlands West of the Rift Valley, Northeastern and Northwestern Kenya (Figure 2).

Night-time (minimum) average temperatures are expected to be less than 10°C in a few areas in the Highlands East and West of the Rift Valley, the Central Rift Valley and in the vicinity of Mt. Kilimanjaro (Figure 3).

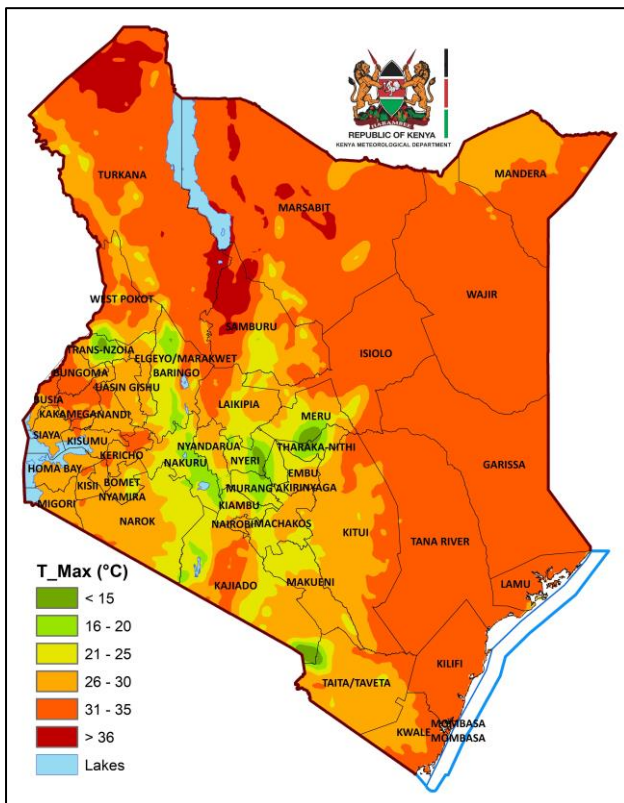


Figure 2: Forecasted Average Maximum Temperatures for 9th to 15th June 2026

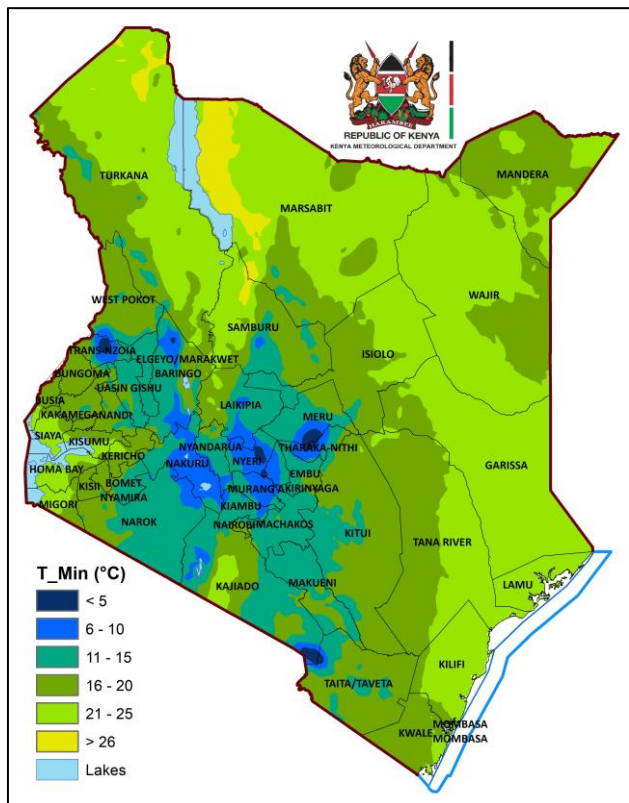


Figure 3: Forecasted Average Minimum Temperatures for 9th to 15th June 2026

1.1 DETAILED REGIONAL RAINFALL FORECAST FOR 9TH TO 15TH JUNE 2026

1.1.1 *The Highlands West of the Rift Valley, the Lake Victoria Basin and the Rift Valley (Nandi, Kakamega, Vihiga, Bungoma, Siaya, Busia, Baringo, Nakuru, Trans-Nzoia, Uasin-Gishu, Elgeyo-Marakwet, West-Pokot, Kisii, Nyamira, Kericho, Bomet, Kisumu, Homabay, Migori and Narok Counties):*

Sunny intervals are expected during the day, with partly cloudy conditions at night. However, afternoon and night showers and thunderstorms may occur over few places.

1.1.2 *North-western Kenya (Turkana and Samburu Counties):*

Sunny intervals are expected during the day, with partly cloudy conditions at night.

1.1.3 *The Highlands East of the Rift Valley (Nyandarua, Laikipia, Nyeri, Kirinyaga, Murang'a, Kiambu, Meru, Embu, Tharaka-Nithi and Nairobi Counties):*

Mornings are likely to be cloudy, with occasional rains over few places, giving way to sunny intervals. Nights are expected to be partly cloudy.

However, there is a possibility of afternoon and night showers occurring over few places.

1.1.4 *North-eastern Kenya (Marsabit, Mandera, Wajir, Garissa and Isiolo Counties):*

Sunny intervals are expected during the day, with partly cloudy conditions at night. However, there is a possibility of morning rains and afternoon showers occurring over few places.

1.1.5 *The South-eastern lowlands (Machakos, Kitui, Makeni, Kajiado and Taita-Taveta Counties as well as the inland parts of Tana-River County):*

Sunny intervals are expected during the day, with partly cloudy conditions at night. However, there is a possibility of morning rains and afternoon showers occurring over few places.

1.1.6 *The Coast (Mombasa, Kilifi, Lamu and Kwale Counties as well as the Tana Delta):*

Sunny intervals are expected during the day, with partly cloudy conditions at night. However, morning, afternoon and night showers may occur over few places.

1.2 DETAILED TEMPERATURE FORECAST FOR 9TH TO 15TH JUNE 2026

Expected maximum and minimum temperatures for selected cities and towns are shown in Table 1.

TABLE 1: FORECASTED MAXIMUM AND MINIMUM TEMPERATURES FOR SELECTED CITIES AND TOWNS								
CITY/TOWN	MAX (°C)	MIN (°C)	CITY/TOWN	MAX (°C)	MIN (°C)	CITY/TOWN	MAX (°C)	MIN (°C)
LODWAR	37.0	26.0	KISUMU	29.0	19.0	THIKA	28.0	15.0
MARSABIT	26.0	17.0	SUBA	29.0	19.0	MACHAKOS	26.0	11.0
MOYALE	29.0	18.0	NAKURU	28.0	13.0	MAKINDU	31.0	15.0
GARISSA	35.0	24.0	NAROK	25.0	10.0	KITUJI	29.0	15.0
WAJIR	36.0	23.0	LAIKIPIA	28.0	10.0	VOI	32.0	20.0
MANDERA	39.0	22.0	NYAHURURU	24.0	06.0	LAMU	31.0	23.0
KITALE	28.0	13.0	KANGEMA	24.0	14.0	MALINDI	30.0	23.0
KAKAMEGA	30.0	16.0	NYERI	26.0	13.0	MSABAHA	30.0	22.0
ELDORET	25.0	10.0	EMBU	26.0	14.0	MTWAPA	30.0	23.0
KERICHO	26.0	10.0	MERU	24.0	12.0	MOMBASA	31.0	23.0
KISII	27.0	16.0	NAIROBI	27.0	12.0			

2.0 WEATHER REVIEW FOR 1ST TO 7TH JUNE 2026

2.1 Rainfall Review

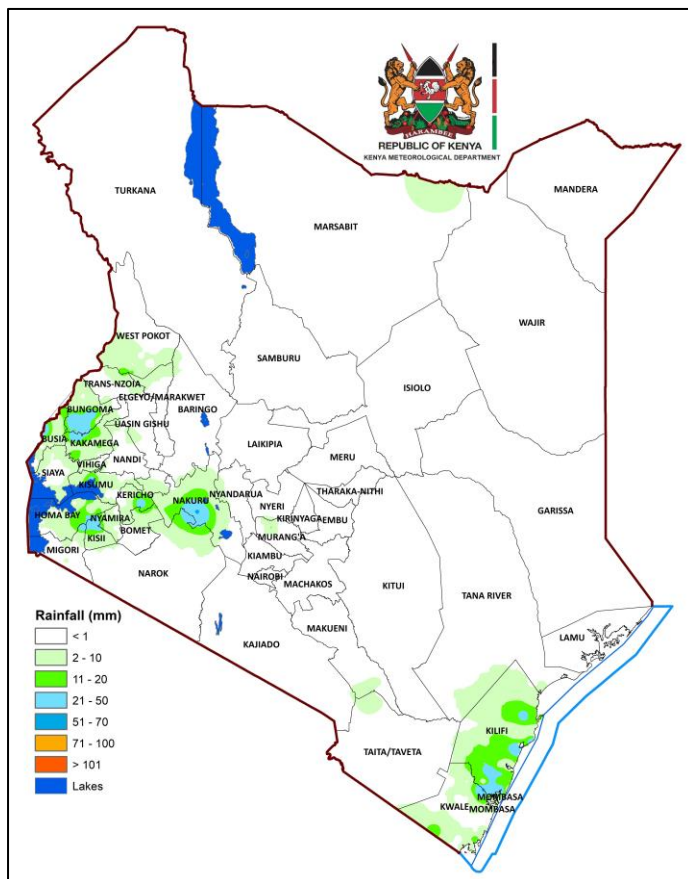


Figure 4: Observed Seven-Day Total Rainfall for 1st to 7th June 2026

Most parts of the country were dry. Rainfall was recorded in a few areas in the Highlands West of the Rift Valley, the Lake Victoria Basin, the Rift Valley and the Coast (Figures 4 and 5).

The highest seven-day rainfall total (89.1 mm) was recorded at Lamu Meteorological Station.

The automatic weather station at Cardinal Otunga High School - Mosochi in Kisii County recorded the highest amount of rainfall within 24-hours: 58.9mm on 3rd June 2026.

Comparing the 25th to 31st May and the 1st to 7th June 2026 review periods, it is noted that rainfall amounts increased in some parts of the Lake Victoria Basin and the Coast and decreased over the rest of the country.

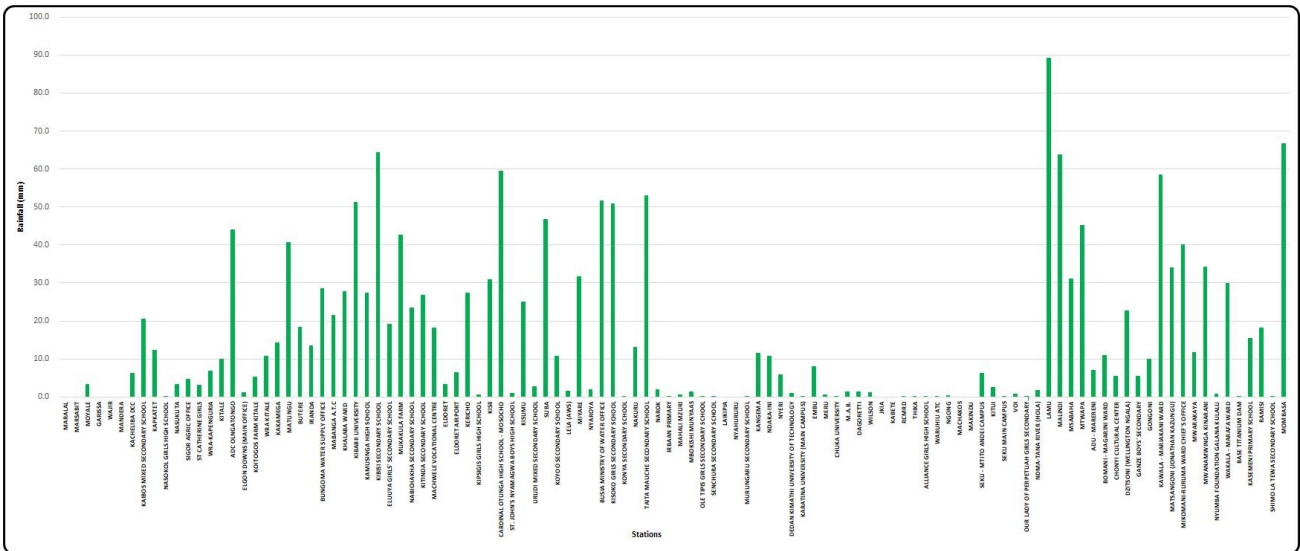


Figure 5: Observed Seven-Day Total Rainfall (per Station) for 1st to 7th June 2026

2.2 Temperature Review

Comparing the 25th to 31st May and the 1st to 7th June 2026 review periods, it is noted that daytime (maximum) temperatures increased in most parts of the country except over the Coast. Night-time (minimum) temperatures increased in several stations including Mandera, Kitale and Eldoret and decreased in Lamu, Msabaha and Meru among others.

Mandera Meteorological Station recorded the highest daily maximum temperature: 39.1°C on 6th June 2026 while Nyahururu Meteorological Station recorded the lowest daily minimum temperature: 5.9°C on 5th June 2026. The same stations recorded the highest seven-day average maximum temperature and the lowest seven-day average minimum temperature: 37.2°C and 7.1°C respectively (Figure 6).

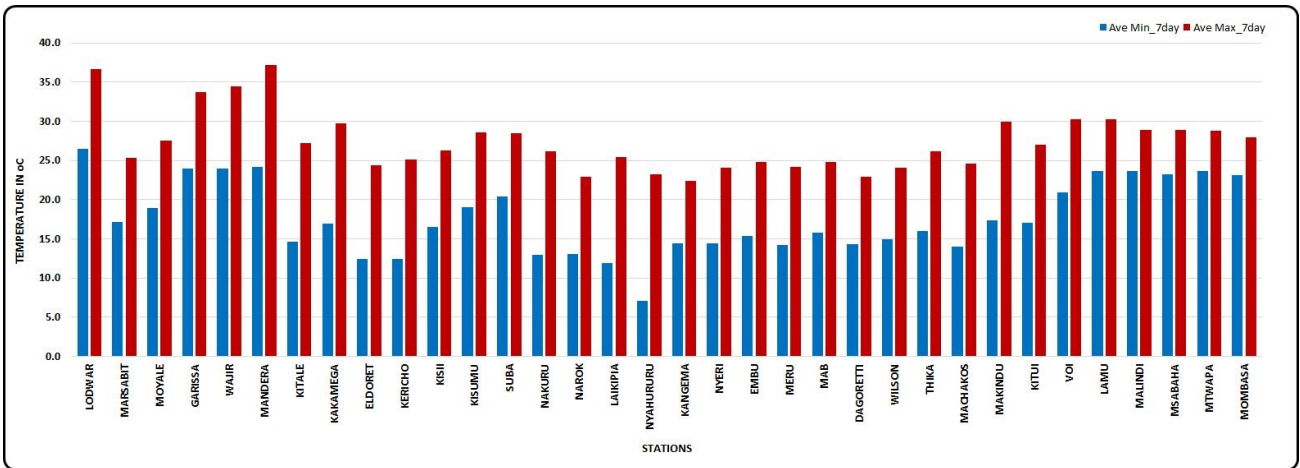


Figure 6: Seven-Day Average Maximum and Minimum Temperatures for 1st to 7th June 2026

N.B: This forecast should be used in conjunction with the daily (24-hour) and five-day forecasts issued by this Department. County specific forecasts are available from the offices of respective County Directors of Meteorological Services.


 Edward M. Muriuki
 Ag. DIRECTOR, KENYA METEOROLOGICAL DEPARTMENT

APPENDIX I: INTERPRETATION OF TERMS USED

Term	Rainfall Amount (24 hrs.)	Description
Light	< 5 mm	Gentle rain, drizzle.
Moderate	5–20 mm	Steady, noticeable rain.
Heavy	21–50 mm	Intense rain, possible thunder.
Very Heavy	> 50 mm	Prolonged rain, high intensity.

Term	Area Affected	Description
Few places	< 33%	Rain in a small portion of the region.
Several places	33% to 66%	Rain in multiple but not most parts of the region.
Most places	> 66%	Rain in nearly all parts of the region.

Term	Area Affected	Description
Isolated	Less than 25%	Very few areas affected.
Scattered	25–50%	Several, but not most, areas affected.
Numerous	51–70%	Many areas affected.
Widespread	Over 70%	Almost all areas affected.

Term	Time Coverage (%)	Meaning
Occasional	Less than 25%	Happens rarely or a few times.
Intermittent	25% – 50%	Starts and stops, comes and goes.
Frequent	51% – 75%	Occurs regularly.
Very Frequent / Common	More than 75%	Happens almost all the time.

Term	Probability of Occurrence	Description
Possible	10–30%	There is low confidence.
Chance of/ May	31–50%	There is moderate confidence.
Likely	51–75%	The event is more probable than not.
Expected	76–90%	There is high confidence.
Very Likely	91–99%	There is very high confidence. Almost certain.
Certain	100%	The event is guaranteed to occur.