



REPUBLIC OF KENYA

MINISTRY OF ENVIRONMENT, CLIMATE CHANGE AND FORESTRY

State Department for Environment & Climate Change

KENYA METEOROLOGICAL DEPARTMENT

Dagoretti Corner, Ngong Road, P. O. Box 30259, 00100 GPO, Nairobi, Kenya

Telephone: 254 (0) 20 3867880-7, 0724 255 153/4

E-mail: director@meteo.go.ke, info@meteo.go.ke Website: <https://www.meteo.go.ke>

REF. NO: KMD/FCST/06-2026/WF/25

Date: 22nd June 2026

WEEKLY WEATHER FORECAST FOR 23RD TO 29TH JUNE 2026

&

REVIEW FOR 15TH TO 21ST JUNE 2026

SUMMARY

Weather Forecast for 23rd to 29th June 2026

- Rainfall is expected over the Highlands East and West of the Rift Valley, the Rift Valley, the Coast and parts of North-eastern Kenya.
- Intermittent cool and cloudy conditions are expected in some parts of the Highlands East and West of the Rift Valley, the Southeastern Lowlands, the Rift Valley & Northeastern Kenya.

Weather Review for 15th to 21st June 2026

- Most parts of the country were dry. Rainfall was recorded in a few areas in the Highlands East and West of the Rift Valley, the Lake Victoria Basin, the Rift Valley and the Coast.
- Mandera Meteorological Station recorded the highest daily maximum temperature: 36.5°C on 15th June 2026.
- Nyahururu Meteorological Station recorded the lowest daily minimum temperature: 3.6°C on 16th June 2026.

1.0 WEATHER FORECAST FOR 23RD TO 29TH JUNE 2026

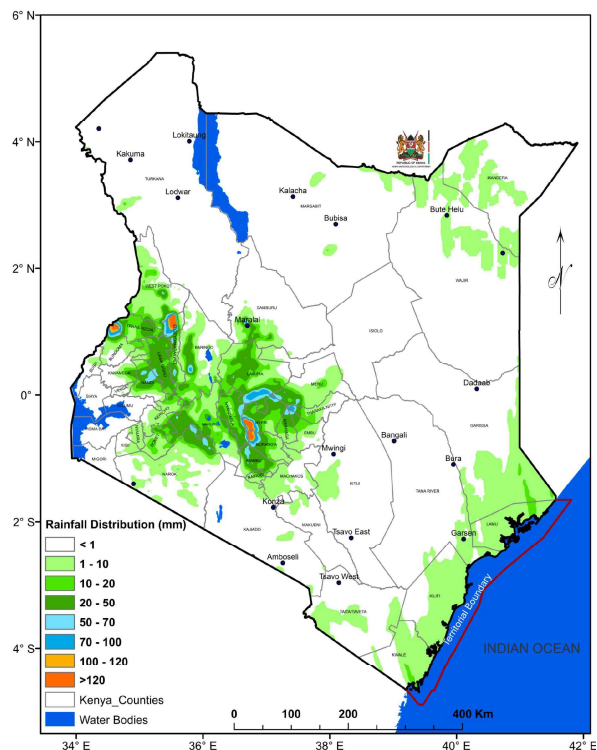


Figure 1: Forecasted Seven-Day Total Rainfall for 23rd to 29th June 2026

Rainfall is expected over the Highlands East and West of the Rift Valley, the Rift Valley, the Coast and parts of North-eastern Kenya (Figure 1).

Intermittent cool and cloudy conditions are expected in some parts of the Highlands East and West of the Rift Valley, the Southeastern Lowlands, the Rift Valley & Northeastern Kenya.

Daytime (maximum) average temperatures of more than 30°C are expected in some parts of the Coast, Northeastern and Northwestern Kenya (Figure 2).

Night-time (minimum) average temperatures are expected to be less than 10°C in a few areas in the Highlands East of the Rift Valley, the Central Rift Valley and in the vicinity of Mt. Kilimanjaro (Figure 3).

WEEKLY FORECAST

Follow us on X and IG: x.com/MeteoKenya and Facebook: fb.com/KenyaMeteorologicalDepartment

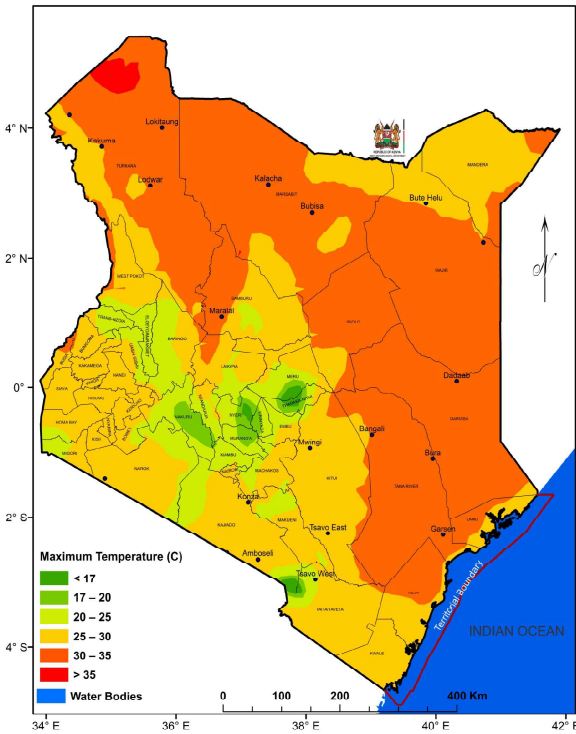


Figure 2: Forecasted Average Maximum Temperatures for 23rd to 29th June 2026

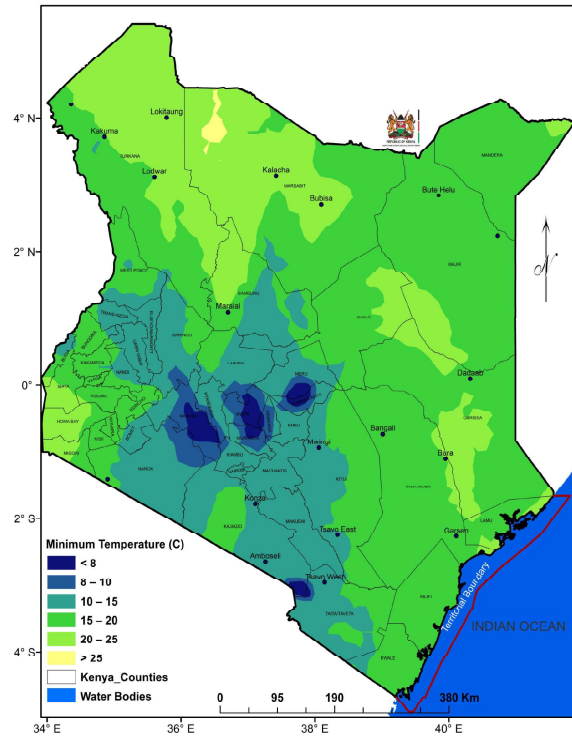


Figure 3: Forecasted Average Minimum Temperatures for 23rd to 29th June 2026

1.1 DETAILED REGIONAL RAINFALL FORECAST FOR 23RD TO 29TH JUNE 2026

1.1.1 *The Highlands West of the Rift Valley, the Lake Victoria Basin and the Rift Valley (Nandi, Kakamega, Vihiga, Bungoma, Siaya, Busia, Baringo, Nakuru, Trans-Nzoia, Uasin-Gishu, Elgeyo-Marakwet, West-Pokot, Kisii, Nyamira, Kericho, Bomet, Kisumu, Homabay, Migori and Narok Counties):*

Occasional rains are expected in the morning. Afternoon showers and thunderstorms are likely to occur over few places occasionally spreading to several places. Nights are expected to be partly cloudy but there is a possibility of a few places receiving showers.

1.1.2 *North-western Kenya (Turkana and Samburu Counties):*

Sunny intervals are expected during the day, with partly cloudy conditions at night. However, there is a possibility of morning rains occurring over a few places.

1.1.3 *The Highlands East of the Rift Valley (Nyandarua, Laikipia, Nyeri, Kirinyaga, Murang'a, Kiambu, Meru, Embu, Tharaka-Nithi and Nairobi Counties):*

Mornings are likely to be cloudy, with occasional rains over few places, giving way to sunny intervals. Afternoon and night showers are expected over few places occasionally spreading to several places.

1.1.4 *North-eastern Kenya (Marsabit, Mandera, Wajir, Garissa and Isiolo Counties):*

Sunny intervals are expected during the day, with partly cloudy conditions at night. However, there is a possibility of morning rains occurring over few places during the first half of the forecast period.

1.1.5 *The South-eastern lowlands (Machakos, Kitui, Makueni, Kajiado and Taita-Taveta Counties as well as the inland parts of Tana-River County):*

Mornings are likely to be cloudy giving way to sunny intervals the rest of the days. Nights are expected to be partly cloudy.

1.1.6 *The Coast (Mombasa, Kilifi, Lamu and Kwale Counties as well as the Tana Delta):*

Sunny intervals are expected during the day, with partly cloudy conditions at night. However, morning and afternoon showers may occur over few places during the first half of the forecast period.

1.2 DETAILED TEMPERATURE FORECAST FOR 23RD TO 29TH JUNE 2026

Expected maximum and minimum temperatures for selected cities and towns are shown in Table 1.

CITY/TOWN	MAX (°C)	MIN (°C)	CITY/TOWN	MAX (°C)	MIN (°C)	CITY/TOWN	MAX (°C)	MIN (°C)
LODWAR	36.0	24.0	KISUMU	30.0	16.0	THIKA	28.0	14.0
MARSABIT	25.0	15.0	SUBA	30.0	18.0	MACHAKOS	25.0	13.0
MOYALE	28.0	18.0	NAKURU	27.0	11.0	MAKINDU	30.0	15.0
GARISSA	34.0	21.0	NAROK	24.0	06.0	KITUI	28.0	16.0
WAJIR	33.0	22.0	LAIKIPIA	27.0	10.0	VOI	31.0	20.0
MANDERA	37.0	25.0	NYAHURURU	24.0	04.0	LAMU	31.0	24.0
KITALE	28.0	10.0	KANGEMA	24.0	12.0	MALINDI	29.0	23.0
KAKAMEGA	31.0	14.0	NYERI	25.0	10.0	MSABAHA	29.0	23.0
ELDORET	25.0	08.0	EMBU	26.0	12.0	MTWAPA	30.0	22.0
KERICHO	25.0	07.0	MERU	25.0	11.0	MOMBASA	30.0	22.0
KISII	28.0	14.0	NAIROBI	26.0	10.0			

2.0 WEATHER REVIEW FOR 15TH TO 21ST JUNE 2026

2.1 Rainfall Review

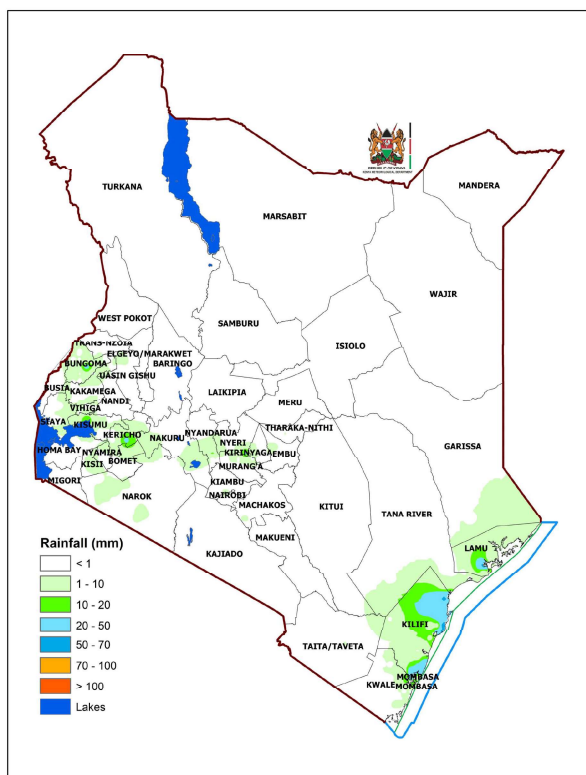


Figure 4: Observed Seven-Day Total Rainfall for 15th to 21st June 2026

Most parts of the country were dry. Rainfall was recorded in a few areas in the Highlands West of the Rift Valley, the Lake Victoria Basin, the Rift Valley and the Coast (Figures 4 and 5).

The highest seven-day rainfall total (68.5 mm) was recorded at Malindi Meteorological Station in Kilifi County.

The automatic weather station at Mkunumbi Secondary School in Lamu County recorded the highest amount of rainfall within 24-hours: 58.2mm on 15th June 2026.

Comparing the 8th to 14th June and the 15th to 21st June 2026 review periods, it is noted that rainfall amounts increased in the Highlands East and West of the Rift Valley and the Coast.

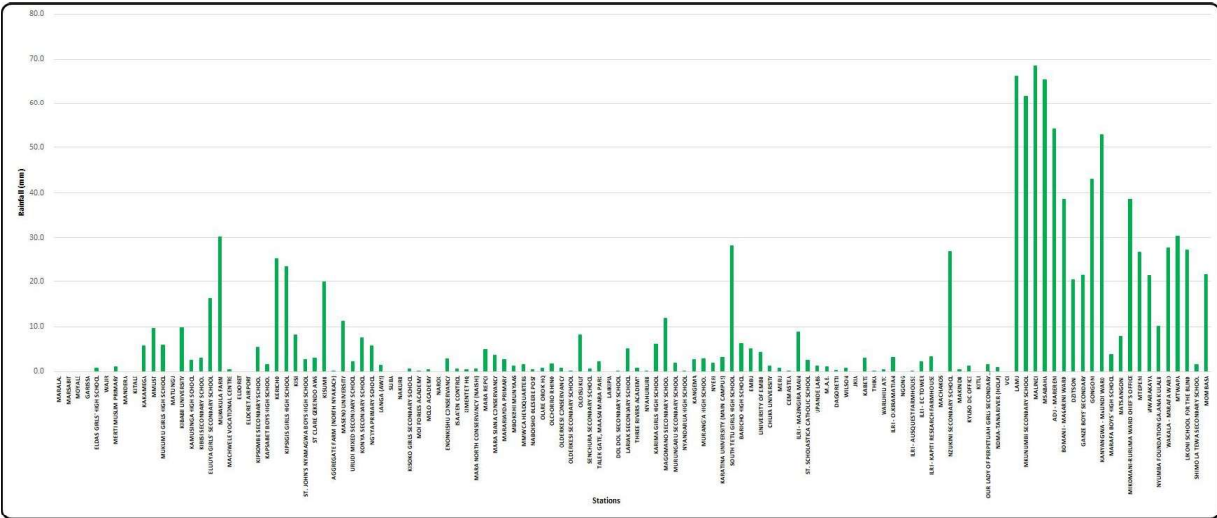


Figure 5: Observed Seven-Day Total Rainfall (per Station) for 15th to 21st June 2026

2.2 Temperature Review

Comparing the 8th to 14th June and the 15th to 21st June 2026 review periods, it is noted that daytime (maximum) temperatures decreased in most stations except Marsabit, Moi Airbase and Kisumu stations where it increased. Night-time (minimum) temperatures increased in a few stations including Narok, Laikipia and Nakuru and decreased in several stations like Meru, Kabete, Kericho among others.

Mandera Meteorological Station recorded the highest daily maximum temperature: 36.5°C on 15th June 2026 while Nyahururu Meteorological Station recorded the lowest daily minimum temperature: 3.6°C on 16th June 2026. The same stations recorded the highest seven-day average maximum temperature and the lowest seven-day average minimum temperature: 35.5°C and 5.5°C respectively (Figure 6).

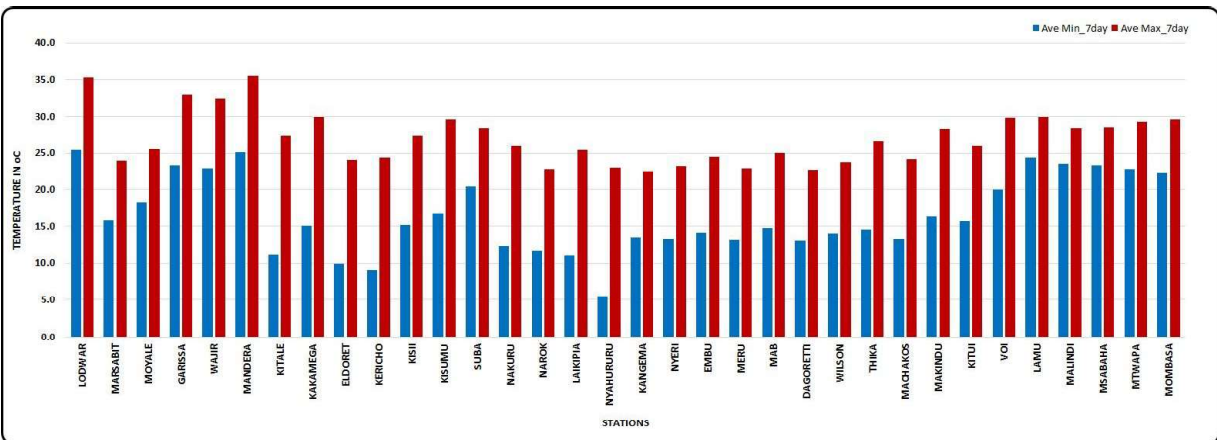


Figure 6: Seven-Day Average Maximum and Minimum Temperatures for 15th to 21st June 2026

N.B: This forecast should be used in conjunction with the daily (24-hour) and five-day forecasts issued by this Department. County specific forecasts are available from the offices of respective County Directors of Meteorological Services.

Charles Mugah
For Ag. DIRECTOR, KENYA METEOROLOGICAL DEPARTMENT

WEEKLY FORECAST

Follow us on X and IG: x.com/MeteoKenya and Facebook: fb.com/KenyaMeteorologicalDepartment

APPENDIX I: INTERPRETATION OF TERMS USED

Term	Rainfall Amount (24 hrs.)	Description
Light	< 5 mm	Gentle rain, drizzle.
Moderate	5–20 mm	Steady, noticeable rain.
Heavy	21–50 mm	Intense rain, possible thunder.
Very Heavy	> 50 mm	Prolonged rain, high intensity.

Term	Area Affected	Description
Few places	< 33%	Rain in a small portion of the region.
Several places	33% to 66%	Rain in multiple but not most parts of the region.
Most places	> 66%	Rain in nearly all parts of the region.

Term	Area Affected	Description
Isolated	Less than 25%	Very few areas affected.
Scattered	25–50%	Several, but not most, areas affected.
Numerous	51–70%	Many areas affected.
Widespread	Over 70%	Almost all areas affected.

Term	Time Coverage (%)	Meaning
Occasional	Less than 25%	Happens rarely or a few times.
Intermittent	25% – 50%	Starts and stops, comes and goes.
Frequent	51% – 75%	Occurs regularly.
Very Frequent / Common	More than 75%	Happens almost all the time.

Term	Probability of Occurrence	Description
Possible	10–30%	There is low confidence.
Chance of/ May	31–50%	There is moderate confidence.
Likely	51–75%	The event is more probable than not.
Expected	76–90%	There is high confidence.
Very Likely	91–99%	There is very high confidence. Almost certain.
Certain	100%	The event is guaranteed to occur.