



KMD 10 DAY AGROMETEOROLOGICAL BULLETIN



Ref: MET/8 /001 / 1 Issue No: 19/2025

Date: 14/07/2025

DEKAD 19 PERIOD: 1ST – 10TH JULY 2025.

1.0 HIGHLIGHTS

Precipitation: Several regions in the country experienced below normal rainfall during the dekad under review.

Rainfall Extremes: Eldoret Kapsoya in Rift Valley region recorded the highest rainfall of 237.3mm, followed by Kakamega in the Western region with 179.4mm.

Soil Moisture: Soil moisture levels remain adequate in most parts of the country especially in Nyanza, Rift Valley, Western, Central, Nairobi and the coastal regions supporting crops and pasture development.

Temperature Trends: A slight increase in mean air temperatures was recorded in Rift valley region while most parts of the country experienced low temperatures compared to the previous dekad.

Evaporation: Total pan evaporation slightly decreased over several parts of the country indicating reduced water loss from the surfaces.

Forecast (Next 10 Days): Rainfall is expected over the

Highlands (both east and west of the Rift Valley), the Lake Victoria Basin, the Rift Valley and Northwestern regions. These conditions are expected to further support crop and pasture growth.

Wind Conditions: Strong southerly to southeasterly winds, exceeding 25 knots (12.86 m/s), are forecast over the Coast, Southeastern

Lowlands, Northeastern, and Northwestern regions of Kenya.

2.0 REGIONAL WEATHER AND AGRICULTURAL CONDITIONS

2.1 Western and Nyanza Regions

Most stations in these regions experienced above normal rainfall compared to the Long-Term Mean for the dekad.

Kakamega: Recorded rainfall of 179.4mm. Mean air temperature slightly decreased to 21.5°C. Maize has attained maturity.

Kisii: Received 65.0 mm of rainfall, above LTM. Temperature slightly decreased from 20.5°C to 19.8°C. Maize is at wax ripeness stage, with few cases of fall armyworms and in fair state.

General Outlook: Broken cloud cover and good soil moisture state have created favorable conditions for crop and pasture growth.

2.2 Rift Valley Region

Most stations in the region reported above normal rainfall.

Kericho: Recorded 52.7 mm of rainfall; temperature slightly increased to 17.5°C. Maize has attained maturity while beans harvesting has been completed.

Kitale: Recorded 75.0 mm of rainfall; mean air temperature remained unchanged at 19.2°C. Maize is at post flowering stage while beans have

attained maturity stage but are affected by too much rainfall.

Eldoret: Rainfall at 237.3 mm; mean temperature slightly increased to 17.7°C.
General Outlook: Favorable climate has positively influenced agricultural activities across the region.

2.3 Central and Nairobi Regions

Most stations within the regions recorded below-normal rainfall compared to the Long-Term Means.

Thika: Received rainfall of 1.9 mm below LTM; mean air temperature slightly decreased from 19.9°C to 19.5°C. Maize is at post flowering stage almost attaining maturity while beans harvesting is completed.

Dagoretti: Received 1.8 mm of rainfall; mean air temperature slightly decreased to 17.7°C. Beans have been harvested. Maize is at post flowering stage.

Kabete: Recorded 2.8 mm of rainfall; maize is at post flowering stage and beans have been harvested.

Nyeri: Received rainfall of 4.7 mm; mean air temperature dropped to 17.5°C. Beans have attained maturity. Maize is at wax ripening stage with a few cases of stalk borer.

General Outlook: Prevailing conditions have generally supported ongoing agricultural activities.

2.4 Eastern Region

Most stations reported above-normal rainfall in the region with broken cloud cover dominating during the dekad.

Meru: Recorded 10.3 mm of rainfall temperature slightly decreased to 18.0°C.

Maize has withered and farmers are cutting it to use for fodder. Beans harvesting has been completed.

Embu: Received 20.2mm of rainfall; temperature slightly decreased to 18.6°C. Maize at post flowering stage. Beans harvesting is completed.

Katumani: Received 0.4 mm of rainfall during the dekad. Temperature decreased to 18.4°C.

Maize is at maturity stage but being affected by insufficient rain.

2.5 Coastal Region

Most stations in the region recorded below normal rainfall as compared to the LTM.

Soil moisture levels are still favorable for crop development and pasture growth in the region.

Mtwapa: Received 21.1 mm of rainfall which was below its Long-Term mean; temperature decreased to 25.4°C. Maize is at post flowering stage but affected by insects and wildlife.

Msabaha: Rainfall at 10.4 mm below its Long-Term Mean; mean air temperature slightly increased to 26.2°C. Maize is at post flowering stage.

2.6 North Eastern Region

The region reported below-normal rainfall during the period under review.

There was a slight decrease in mean air temperatures over the region ranging between 28.1°C in Wajir to 29.5°C in Mandera.

Soil moisture levels slightly support crop and pasture growth in the region.

Broken cloud cover dominated much of the region.

3.0 DEKAD 19 JULY 2025 RAINFALL, TEMPERATURE & WRSI MAPS / CHARTS

STATION	Cumulative RF from the beginning of JJA	Maximum Consecutive Wet days during Dekad	Maximum Consecutive dry days during Dekad	Number of rainy days during Dekad
Kakamega	497.21	5	1	5
Kisii	229.04	2	1	3
Kitale	251.33	2	2	3
Kericho	234.07	3	2	3
Nyeri	28.72	1	0	0
Thika	11.82	0	3	0
Dagoretti	47.38	0	1	0
Meru	13.46	2	3	0
Embu	40.32	5	1	2
Katumani	1.9	0	6	0
Msabaha	209.43	1	3	1
Mtwapa	220.41	3	2	2
Kabete	32.15	1	3	0
Nyahururu				

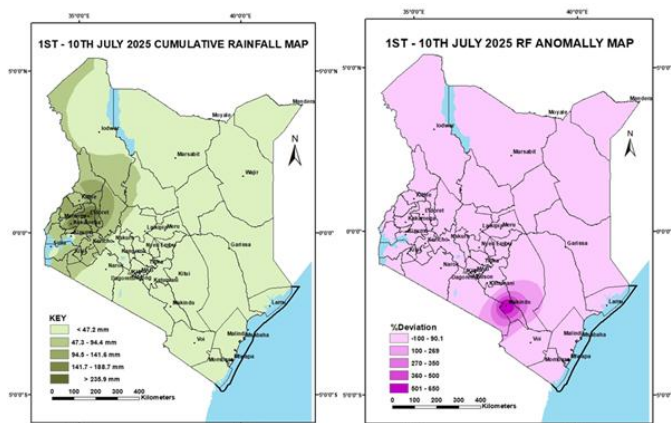


Fig 3.1

Fig 3.2

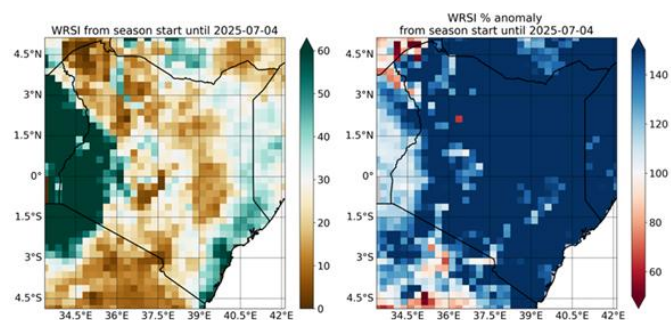


Fig 3.3

Fig 3.4

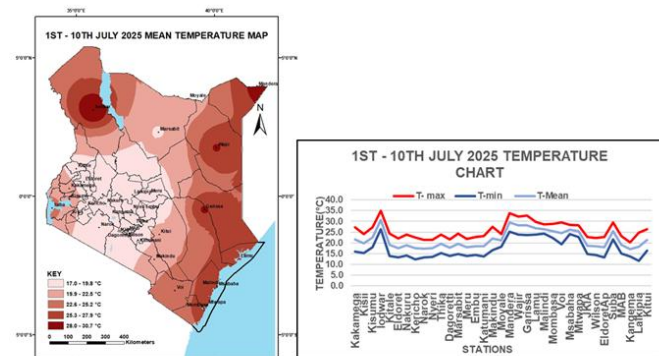


Fig 3.5

Fig 3.6

4.0 EXPECTED WEATHER, SOIL AND CROP CONDITIONS DURING THE NEXT TEN (10)

DAYS; 11th – 20th July 2025.

Western, Nyanza, and South Rift Valley

Expected Conditions: Normal to above normal rainfall expected during the forecasted period.

Impact: Conditions are favorable for crop and pasture growth.

Central Region & Nairobi

Expected Conditions: Below normal to normal rainfall, with occasional showers in few places.

Impact: Moderately supportive for agricultural activities.

North Western Region

Expected Conditions: Normal to below normal rainfall expected over the region.

Impact: The expected rains will help in pasture regeneration in the region.

North Eastern Region

Expected Conditions: Sunny intervals likely to dominate, nights are likely to be partly cloudy.

Impact: The forecasted sunny intervals will further lead to water scarcity and pasture deterioration in the region.

South-Eastern Lowlands

Expected Conditions: Predominantly sunny intervals anticipated. Nights will be partly cloudy.

Impact: Anticipated weather conditions will further cause soil moisture stress in the region.

Coastal Counties

Expected Conditions: Below normal rainfall is expected during the forecast period.

Impact: Soil moisture Conditions are expected to remain sufficient for crop development, but pest and wildlife challenges may persist.

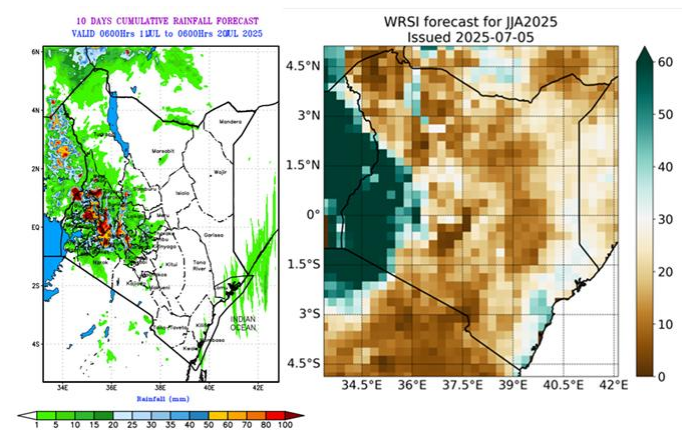


Fig 3.7

Fig 3.8

4.1 AGRO-ADVISORY FOR FARMERS AND PASTORALISTS.

Farmers:

Adopt sound crop management practices, including appropriate, pest control, and timely harvesting.

Farmers harvesting beans should do so when most pods have turned yellow to brown and are starting to dry. A void late harvesting which can lead to pod shattering.

Consult agricultural extension officers for localized advice and to stay informed on the best agricultural practices tailored to specific crops and regions.

Pastoralists:

Practice sustainable grazing to maintain pasture health and prevent land degradation.

Avoid overgrazing by managing livestock movement and using rotational grazing systems where feasible.

General Advisory:

Implementing these best practices will help enhance resilience and productivity, enabling farmers and pastoralists to better cope with changing climatic conditions.



Mary Githinji

For: Director Meteorological Services

For inquiries or any clarification, please use the email below

E-mail: agrometkenya@gmail.com