



**REPUBLIC OF KENYA**  
**MINISTRY OF ENVIRONMENT, CLIMATE CHANGE AND FORESTRY**  
**KENYA METEOROLOGICAL DEPARTMENT**

**COUNTY METEOROLOGICAL SERVICES, LAIKIPIA COUNTY**  
**P.O. BOX 192, 10400 NANYUKI**

**e-mail:** [kmdcdmlaikipia@gmail.com](mailto:kmdcdmlaikipia@gmail.com), **CDMS:** Njiru David: **Tel.** 0721218207

**For further information, please contact: Director KMD**

**Tel:** +254724255153/4

**e-mail:** [director@meteo.go.ke](mailto:director@meteo.go.ke), [info@meteo.go.ke](mailto:info@meteo.go.ke) **Website:** <http://www.meteo.go.ke>

**Ref:** MET/Laikipia County/07/25

**Date of issue;** 21 July, 2025

**WEATHER FORECAST FOR THE NEXT SEVEN DAYS VALID 22 - 28 July, 2025**

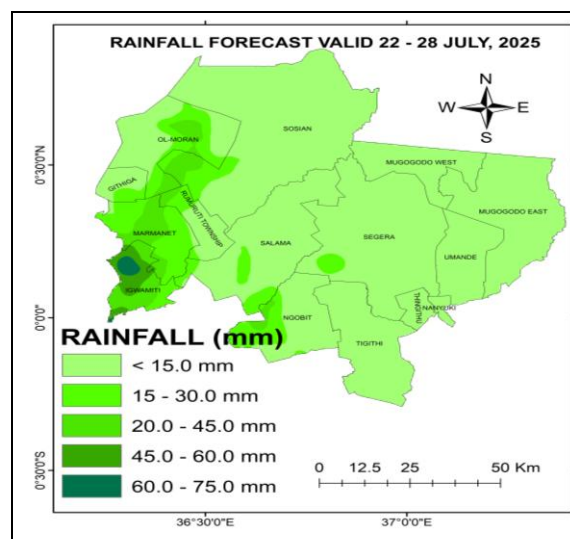
**Forecast for the next Seven days (22 - 28 July, 2025) indicates;**

- Rainfall is expected to continue mainly over parts Laikipia West
- Expect mainly cloudy mornings, afternoon showers and thunderstorms over few places
- The Maximum temperatures expected to range between 20 – 28°C and the (Minimum) temperatures to range 06 - 20°C

**Review of weather for the last seven-days (15 - 21 July, 2025)**

- Stations that recorded rainfall were Sipili, Mohotetu, Mugie, Survey, Lol Daiga, Nanyuki, Ngobit etc
- *Comparing the last two weeks the precipitation amounts increased over most places.*
- Both the day time (Max) temperatures and the Night time (Min) temperatures decreased

**Expected Rainfall Distribution for the Next Seven Days (22 - 28 July, 2025)**



Expect mainly cloudy conditions with light rains in the morning with afternoon showers & thunderstorms over Few Places

Between 10 – 70 mm of cumulated weekly rainfall is expected as indicated in the adjacent rainfall forecast map.

**Note;** Much of the predicted rains are likely in the second half of the forecasting period.

**Detailed Weather Forecast for the Next Seven Days Valid 22 - 28 July, 2025**

REGION	TIME	TUESDAY 22/07/2025	WEDNESDAY 23/07/2025	THURSDAY 24/07/2025	FRIDAY 25/07/2025	SATURDAY 26/07/2025	SUNDAY 28/07/2025	MONDAY 28/07/2025
<b>LAIKIP IA NORTH</b>	Morning	Cloudy/ Sunny	Cloudy/Sun ny	Sunny	Cloudy/ Sunny	Cloudy/Su nny	Cloudy/ Sunny	Cloudy/S unny
	After noon	Showers over Few Places	Showers over Few Places	Sunny Intervals	Showers & TS over Few Places	Showers over Places	Showers over Places	Showers over Few Places
	Night	Partly Cloudy	Partly Cloudy	Partly Cloudy	Partly Cloudy	Partly Cloudy	Partly Cloudy	Partly Cloudy
<b>TEMPS</b>	<b>Max/ Min</b>	25/13	24/13	25/14	25/13	24/12	24/12	24/13
<b>LAIKIP IA EAST</b>	Morning	Cloudy/ Sunny	Cloudy/Sun ny	Cloudy/Su nny	Cloudy/ Sunny	Cloudy/Su nny	Cloudy/ Sunny	Cloudy/S unny
	After noon	Showers over Few Places	Showers over Few Places	Showers over Few places	Showers over Places	Showers over Few Places	Showers over Few Places	Showers over Few Places
	Night	Partly Cloudy	Partly Cloudy	Partly Cloudy	Partly Cloudy	Partly Cloudy	Partly Cloudy	Partly Cloudy
<b>TEMPS</b>	<b>Max/ Min</b>	23/12	23/12	24/12	23/10	22/10	23/12	23/12
<b>LAIKIP IA WEST</b>	Morning	Cloudy/ Sunny	Cloudy/Sun ny	Cloudy/Su nny	Cloudy/ Sunny	Cloudy/ Sunny	Cloudy/ Sunny	Cloudy/S unny
	After noon	Showers over Several Places	Showers over Few Places	Showers over Few Places	Showers & TS over Few Places	Showers & TS over Few Places	Showers over Few Places	Showers over Several places
	Night	Partly/ Cloudy	Partly Cloudy	Partly Cloudy	Partly Cloudy	Partly Cloudy	Partly Cloudy	Partly Cloudy
<b>TEMPS</b>	<b>Max/ Min</b>	20/11	20/10	22/11	20/09	20/10	20/09	20/10

- **TS – Thunderstorms; AWS - Automatic Weather Station**
- Further outlook indicates mainly Cloudy conditions in the morning, breaking into Sunny intervals over most places.
- Afternoon showers and thunderstorms are likely over a Few Places in Laikipia West and parts of Laikipia East.

### COMPARING CUMMULATED RAINFALL AMOUNTS FOR THE LAST TWO WEEKS

STATION	08 – 14 July, 2025	15 – 21 July, 2025
Mutara Orchards (Office Area)	8.8 mm	15.2 mm
Lamuria Met. Stn.	2.8 mm	7.4 mm
Rumuruti	-	-
Muhotetu CC	54.8 mm	31.4 mm
Sipili	28.4 mm	70.2 mm
Ngárua (Kinamba – AWS)	22.0 mm	18.6 mm
Ol Mysor Sosian	14.4 mm	2.3 mm
Mugie Conservancy (Centre)	5.5 mm	43.1 mm
Laikipia Airbase (Nanyuki)	7.6 mm	11.8 mm
Kimanjo Pri. Sch AWS	0.3 mm	0.2 mm
Survey Sec. Sch. AWS	6.4 mm	48.4 mm
Lokusero Sec. Sch. AWS	0.2 mm	1.4 mm
Dol Dol Boys Sch. (AWS)	1.3 mm	3.5 mm
Ngobit Police Stn. AWS	9.6 mm	3.7 mm
<b>Lol-Daiga Stations</b>		
1). Barrier	3.2 mm	21.5 mm
2). Central	1.2 mm	Nil
3). Northern	Nil	Nil
<b>Ol Pejeta Rainfall Stations</b>		
1). Kamock	12.0 mm	25.0 mm
2). OPC HQ site	4.0 mm	Nil
3). Golf 3	12.0 mm	36.5 mm
4). Oscar 2 - 5	8.0 mm	14.0 mm
5). Research	5.0 mm	Nil
6). Sirima	7.0 mm	Nil
7). Mutara (Zulu 3)	16.0 mm	7.5 mm
<b>Ol Jogi Conservancy Rainfall Stations</b>		
1). Main House	15.1 mm	7.5 mm
2). Marula	6.7 mm	9.4 mm
<b>Borana Conservancy Rainfall Stations</b>		
1). Headquarters	Nil	Nil
2). Waitabit	Nil	Nil

KEY SCIENTIFIC TERMS USED IN THE FORECAST			
RAINFALL CATEGORIES		RAINFALL COVERAGE	
< 5 mm	Light	<b>TERMs</b>	<b>MEANING</b>
5 – 20 mm	Moderate	Most places	Between 67% and 100%
20 – 50 mm	Heavy	Several Places	Between 33% and 67%
> 50 mm	Very heavy	Few places	Below 33%

**Note;** *It's important to follow up this weekly forecast with the 24hr forecast issued daily by the Kenya Meteorological Department.*