



KENYA
METEOROLOGICAL
DEPARTMENT

For further info:

Contact: Daniel M. Mbithi

Mobile No. 0715255171

Email: mbithi_d@yahoo.com

County Director of Meteorological Services Kitui County

Weekly Weather forecast for Kitui County

1.1 PART I: WEEKLY FORECAST FOR THE PERIOD 22nd to 28th July 2025 Weather forecast Table

Sub County	Ward	Probable Total weekly amount (mm)	Probable weather Notes: Light rains <1-5 mm; Moderate rains 5-20 mm; Heavy rains 20-50 mm; Very heavy rains >50 mm							Winds (km/h kilometers per hour)	Temp (Tmax °C & Tmin °C)
			Tue	Wed	Thur	Fri	Sat	Sun	Mon	Weekly	Weekly
Mwingi West	Nguutani	<1mm	Partly cloudy	Partly cloudy	Partly cloudy	Partly cloudy	Partly cloudy	Partly cloudy	Partly cloudy	Easterly 25.2 km/h	Max 22-30 °C Min 13-19°C
	Kyome/Thaana	<1mm	Partly cloudy	Partly cloudy	Partly cloudy	Partly cloudy	Partly cloudy	Partly cloudy	Partly cloudy		
	Kiomo/Kyethani	<1mm	Partly cloudy	Partly cloudy	Partly cloudy	Partly cloudy	Partly cloudy	Partly cloudy	Partly cloudy		
	Migwani	<1mm	Partly cloudy	Partly cloudy	Partly cloudy	Partly cloudy	Partly cloudy	Partly cloudy	Partly cloudy		
Mwingi North	Ngomeni	<1mm	Partly cloudy	Partly cloudy	Partly cloudy	Partly cloudy	Partly cloudy	Partly cloudy	Partly cloudy	Easterly 28.8 km/h	Max 26-34 °C Min 16-21 °C
	Kyuso	<1mm	Partly cloudy	Partly cloudy	Partly cloudy	Partly cloudy	Partly cloudy	Partly cloudy	Partly cloudy		
	Tseikuru	<1mm	Partly cloudy	Partly cloudy	Partly cloudy	Partly cloudy	Partly cloudy	Partly cloudy	Partly cloudy		
	Tharaka	<1mm	Partly cloudy	Partly cloudy	Partly cloudy	Partly cloudy	Partly cloudy	Partly cloudy	Partly cloudy		
	Mumoni	<1mm	Partly cloudy	Partly cloudy	Partly cloudy	Partly cloudy	Partly cloudy	Partly cloudy	Partly cloudy		
Mwingi Central	Central	<1mm	Partly cloudy	Partly cloudy	Partly cloudy	Partly cloudy	Partly cloudy	Partly cloudy	Partly cloudy		
	Kivou	<1mm	Partly cloudy	Partly cloudy	Partly cloudy	Partly cloudy	Partly cloudy	Partly cloudy	Partly cloudy		

[illegible]

Sub County	Ward	Probable Total weekly amount (mm)	Probable weather Notes: Light rains <1-5 mm; Moderate rains 5-20 mm; Heavy rains 20-50 mm; Very heavy rains >50 mm							Winds (km/h kilometers per hour)	Temp (Tmax °C & Tmin °C)
			Tue	Wed	Thur	Fri	Sat	Sun	Mon	Weekly	Weekly
Kitui Central	Kyangwithya West	<1mm	Partly cloudy	Partly cloudy	Partly cloudy	Partly cloudy	Partly cloudy	Partly cloudy	Partly cloudy	Easterly 21.6 km/h	Max 22-31 °C Min 13-18 °C
	Township	<1mm	Partly cloudy	Partly cloudy	Partly cloudy	Partly cloudy	Partly cloudy	Partly cloudy	Partly cloudy		
	Mulango	<1mm	Partly cloudy	Partly cloudy	Partly cloudy	Partly cloudy	Partly cloudy	Partly cloudy	Partly cloudy		
	Miambani	<1mm	Partly cloudy	Partly cloudy	Partly cloudy	Partly cloudy	Partly cloudy	Partly cloudy	Partly cloudy		

1.2 Review for June 2025

June 2025 marked the beginning of cold season across Kitui county. Most parts of the county remained generally dry with intermittent cool and Partly cloudy conditions and occasional light rains over high ground areas. Both daytime (Maximum) and night time (Minimum) temperatures were warmer than normal over most parts of the county. Strong southerly to south-easterly winds with speeds exceeding 25 knots (12.86 m/s) were experienced occasionally over the county during the month.

1.3 Outlook for July 2025

The weather forecast for July 2025 is based on regression of Sea Surface Temperatures (SSTs), SST gradients and the expected evolution of global SST patterns as well as upper air circulation patterns as illustrated in the rainfall climatology map for July in Annex II. The month of July marks the peak of the June-July-August cold season over Kitui county. The county is expected to remain generally dry and Sunny. Cool and Partly cloudy conditions with occasional light rains over high ground areas is expected over the county.

1.4 PART II: FURTHER ADVISORIES

SUMMARY ABOUT THE WEEKLY FORECAST:

We expect partly cloudy condition during the nights, chilly and Partly cloudy mornings breaking into sunny intervals in the afternoons with a small chance (probability <33%) of drizzle over the high ground areas. Maximum temperatures are expected to range from 21°C - 34°C, while minimum temperatures are expected to range from 12°C - 21°C. Strong southerly to south-easterly winds with speeds exceeding 25 knots (12.86 m/s) are expected to persist in most parts of the County. *Community members advised to inculcate the culture of being “weather – ready”, “climate – smart” and “water – wise” as we navigate the unfamiliar and chaotic environment of a changing climate. This will help them adapt to a changing climate while at the same time mitigating the adverse effects of Climate Change and Variability, hence becoming more resilient to the vagaries of Climate Change.* In light of this weather forecast, farmers are also advised to consult with respective local extension officers from the County Ministry of Agriculture and Livestock at Ward and Sub-county level for more advice on the best farm practices.

Note: 1 mm of rainfall is equivalent to 1 litre of rainfall per square meter.

KEY OF SCIENTIFIC WORDS USED

Rainfall categories	
Range	Category
<5 mm	Light
5 - 20mm	Moderate
20 - 50mm	Heavy
>50mm	Very heavy
Rainfall coverage	
Term	Meaning
Most Places	Between 66% and 100%
Several Places	Between 33% and 66%
Few Places	Below 33%
<p>Ushauri wa Idara ya Utabiri wa Hali ya Hewa: Msimu wa baridi wa June-July-August (JJA) unaendelea katika Kaunti ya Kitui. Wakulima wanashauriwa waendeleee kuvuna chakula chao na napia kuianika vizuri kwa jua hili kuepukana na athari za sumu kuvu yaani 'aflotoxin'. Pia wanashauriwa wanywe maji moto kwa wingi na kuvaa nguo za nje zinazoleta joto mwilini kama vile kanzu, koti, kofia, mitandio (scarves) na glovu au shati (mittens), masikio (earmuffs), suti za muungano (union suits) na pia soksi joto.</p>	

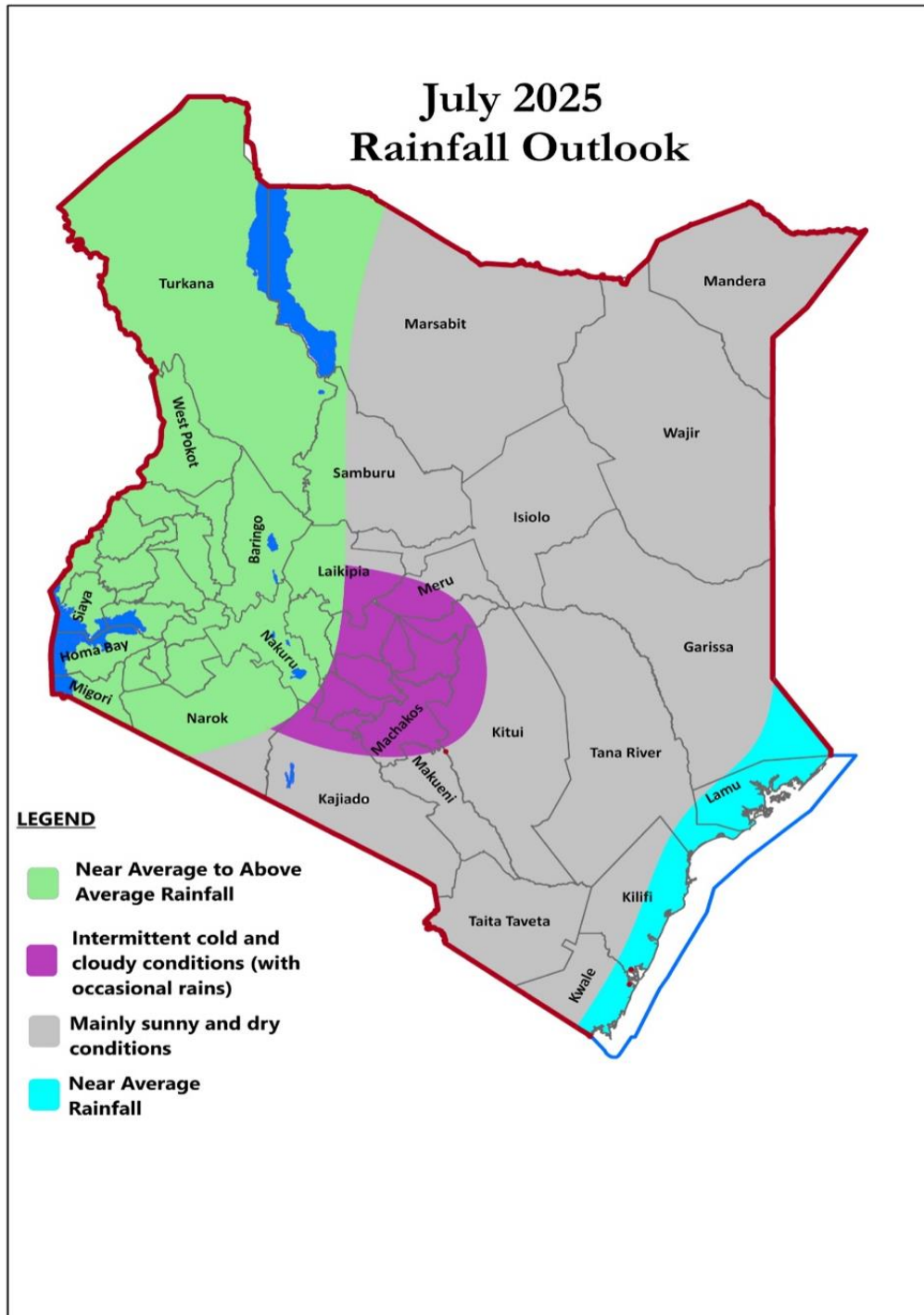
For further information, please contact:



Daniel M. Mbithi
County Director of Meteorological Services
Mobile: 0715255171
Email: mbithi_d@yahoo.com

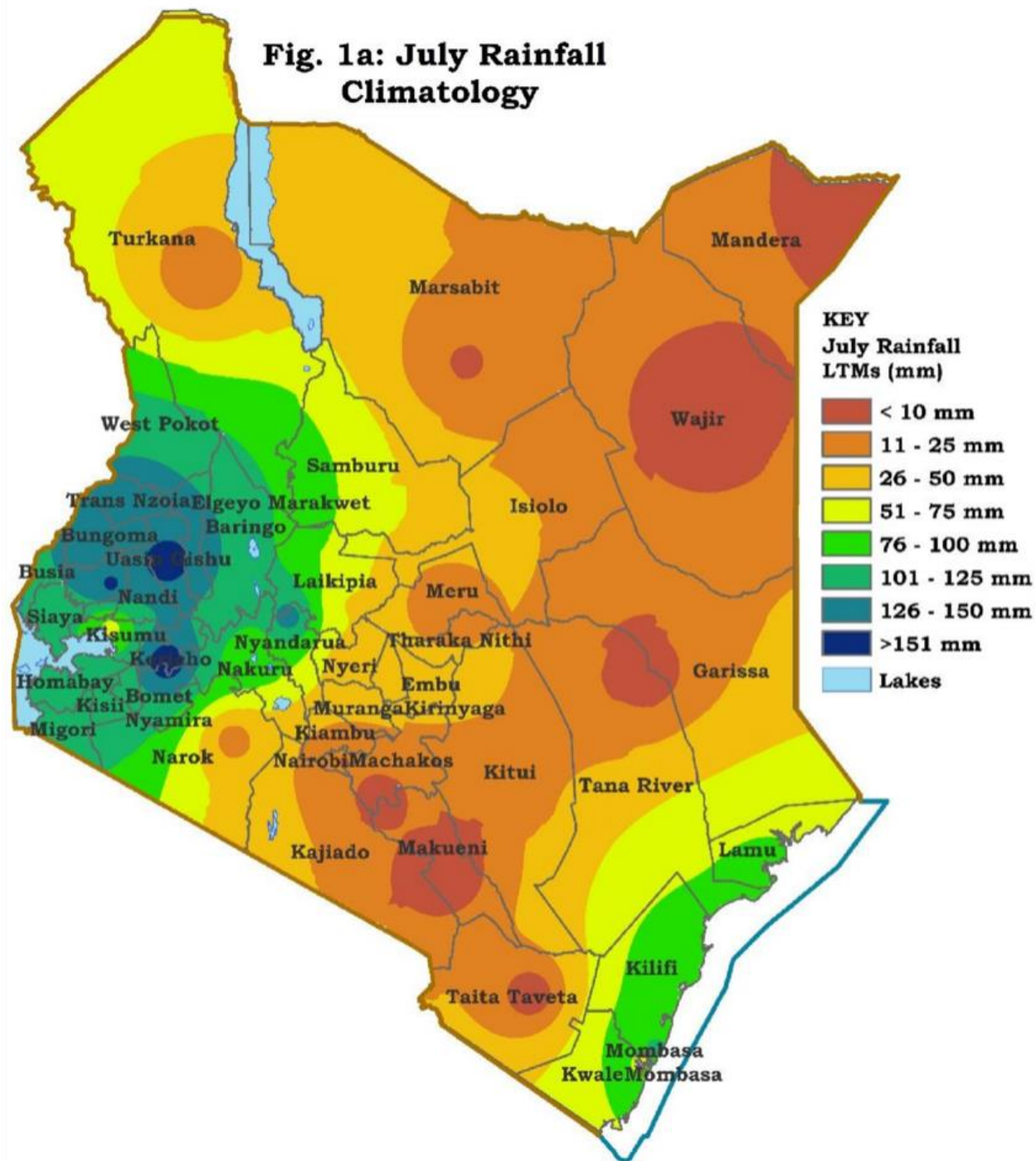
You can find more information about the climate and weather in Kenya on the KMD website <http://www.meteo.go.ke/>

Annex I: Rainfall forecast for the month of July 2025



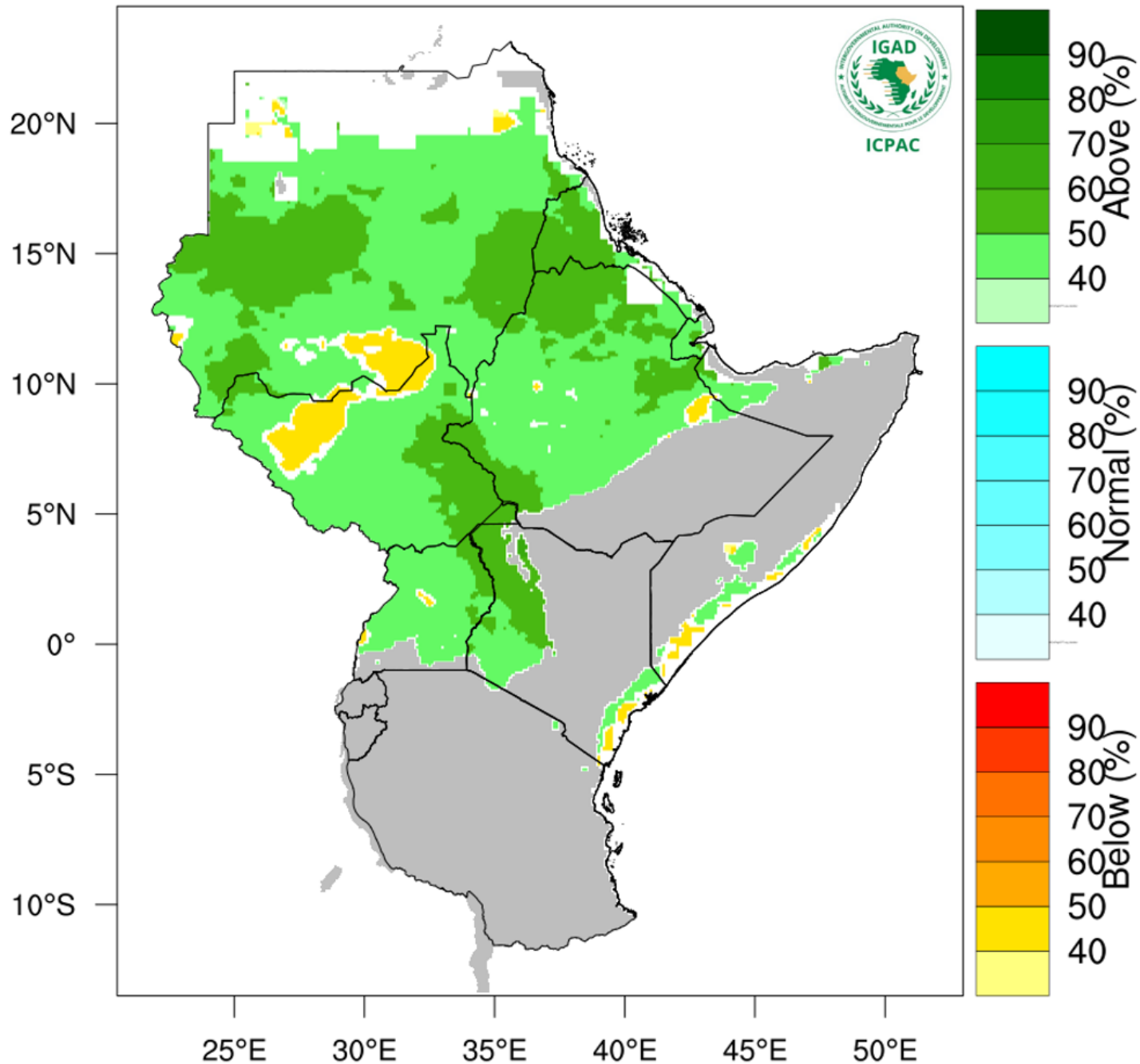
NB: Below normal rainfall expected over most places during the month of July 2025 in the County

Annex II: Rainfall climatology for the month of July 2025



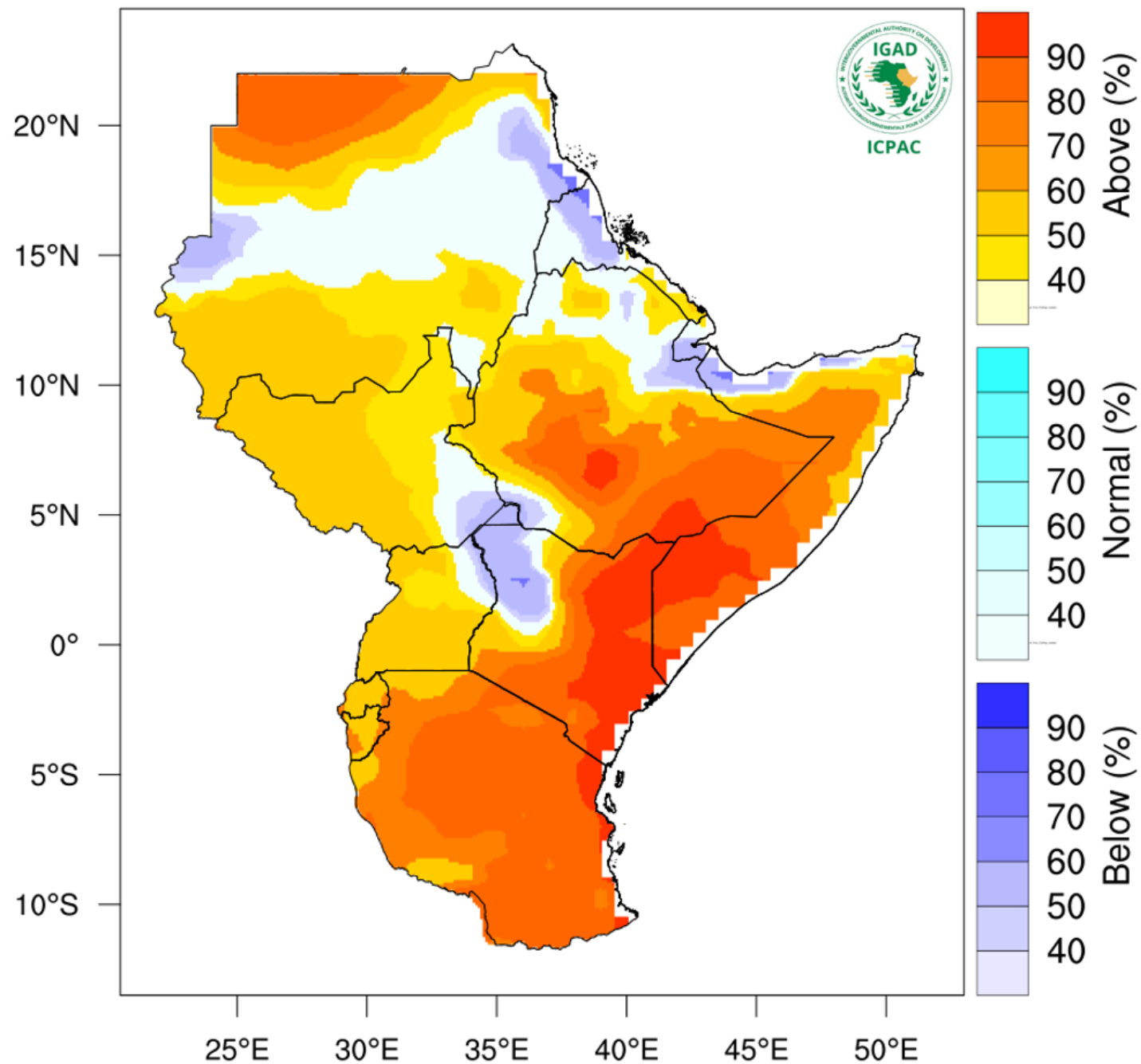
NB: Drier than normal conditions expected over most places during the month of July 2025 in the County

Rainfall Probabilistic Forecast for Jun - Aug 2025



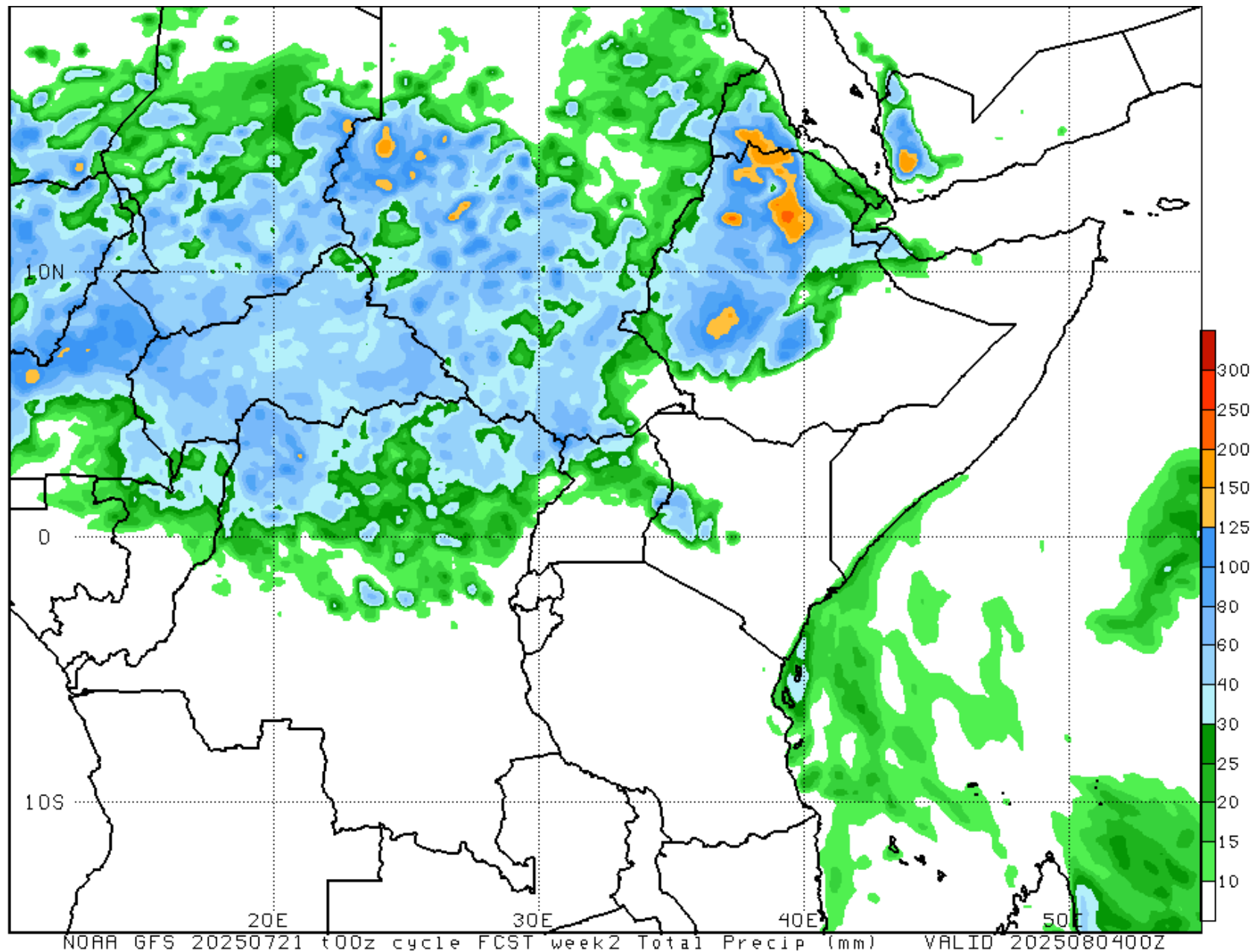
NB: Drier than normal conditions expected over most parts of the County between June to August 2025

Temperature Forecast for Jun - Aug 2025



NB: Warmer than usual conditions indicated over most parts of Kitui County between June and August 2025

Annex V: Fourteen days rainfall forecast up to 4th August, 2025



1.4.1.1

NB: Drier than normal conditions expected over most parts of the County between 22nd July to 4th August, 2025