



REPUBLIC OF KENYA
MINISTRY OF ENVIRONMENT AND FORESTRY
KENYA METEOROLOGICAL DEPARTMENT

TAITA TAVETA COUNTY
MONTHLY WEATHER FORECAST FOR
AUGUST, 2025

Date of Issue: 3rd August, 2025

Forecast Period: 1st – 31st August, 2025

1. HIGHLIGHTS

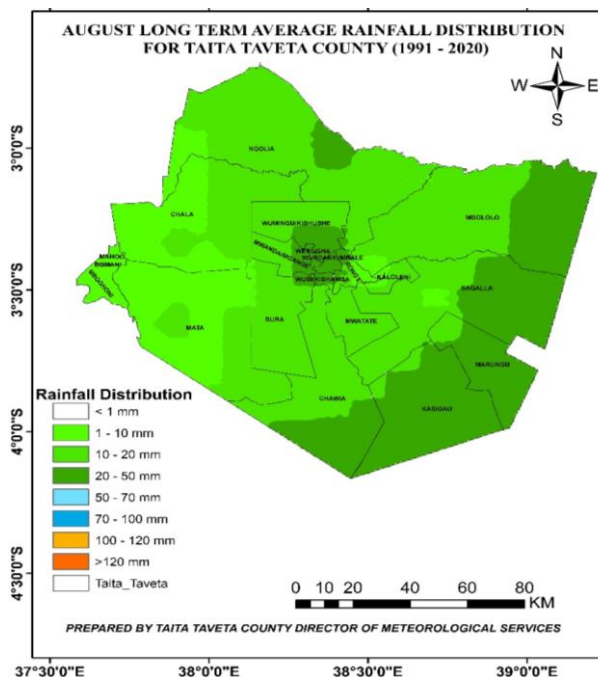
1.1 Forecast for August, 2025

Taita Taveta County is expected to experience predominantly sunny and dry conditions during August 2025. The County is categorized under the Southeastern Lowlands in the national forecast. Intermittent cool and cloudy weather with occasional light morning rains may occur in some places, especially the upper elevations of Taita hills.

1.2 Climate Review for July 2025

July 2025 in Taita Taveta was dominated by dry, sunny, and mild-to-cool conditions overall. Despite an outlook pointing to near-to-above-normal rainfall, actual precipitation was minimal – with only occasional light showers, more likely in the highland zones. Daytime temperatures remained warm but not extreme, and nighttime lows were typically the coolest of the year.

2. DETAILED FORECAST FOR AUGUST, 2025



For Taita Taveta County in August 2025, there is a chance of intermittent cool and cloudy conditions with occasional light rains. This means most areas will see minimal rainfall, but patchy drizzles or light morning showers may occur in the higher elevations of Wundanyi and Mwatate. Rainfall totals are likely to be below the August long-term mean for most of the county.

Figure 1: Long-Term Average Rainfall for August (1991–2020)

Table 1: Category and intensity of precipitation, and probability of rainfall distribution over places

Category	Rainfall Amount	Rainfall Distribution	
		Term	Meaning
Light	Less than 5.0mm		
Moderate	5 to 20 mm	Most Places	Between 66% and 100%
Heavy	20 to 50 mm	Several Places	Between 33% and 66%
Very Heavy	Over 50mm	Few Places	Between 0 and 33%

2.1 Rainfall Forecast

Occasional light rains could fall in some localised areas, but these will be brief and not widespread. The rainfall amounts are likely to be near or below the long-term August average, so no significant accumulation is expected.

2.2 Temperature

Temperatures are expected to be warmer than average during the day across most of Taita Taveta. The higher altitude zones (e.g., Wundanyi, Sagalla hills) may experience cooler conditions, especially at night and early mornings. Occasional chilly mornings may occur in highland areas, but overall warmth is expected to dominate.

3. EXPECTED WEATHER CHARACTERISTICS

Table 2: Expected weather conditions and probability of rainfall per sub-county:

Sub-County	Day Conditions	Night Conditions	Rain Chances
Wundanyi	Cool, cloudy mornings clearing to mild sunshine	Chilly nights, occasional mist	Moderate
Taveta	Mostly sunny and dry; warm afternoons	Mild, dry nights	Low
Voi/Mwatate	Sunny with occasional scattered clouds	Mild nights with cool breezes	Low
Taita Hills	Foggy mornings with light drizzle; overcast at times	Cold, patchy fog in valleys	Moderate

4. IMPACTS AND RECOMMENDATIONS

(4.1) Agriculture & Food Security

Limited rainfall may stress pasture and crop development. Farmers are advised to delay land preparation or planting unless supported by localized advisories. Rainwater harvesting is recommended where possible.

(4.2) Health

The cool morning conditions in highland areas may increase the risk of respiratory illnesses. Communities should dress warmly during early mornings and nights and avoid use of charcoal jikos in poorly ventilated spaces.

(4.3) Water Resources

Water scarcity may persist or worsen, particularly in lowland zones (e.g., Voi, Taveta plains). Water conservation and storage is encouraged, including use of tanks and pans.

(4.4) Disaster Risk Management

Fire risk may increase due to dry vegetation and warm conditions. Local authorities should remain alert for dust storms or strong winds in exposed lowland areas.

5. ADVISORY

Residents are urged to follow daily and weekly updates issued by the Kenya Meteorological Department's County Office. Strategic planning for water use, livestock management, and health protection should be prioritized during the dry spell.

NB: This outlook should be used together with the Weekly County Forecasts developed and availed by the County Meteorological Office, as well as any other weather updates and advisories that may be communicated when necessary.

Prepared by:



Geoffrey Mwongela
County Director of Meteorological Services
Taita Taveta County