



REPUBLIC OF KENYA
MINISTRY OF ENVIRONMENT, CLIMATE CHANGE & FORESTRY
KENYA METEOROLOGICAL DEPARTMENT
Dagoretti Corner, Naara Road, P.O. Box 30259 - 00100 GPO Nairobi Kenya
E-mail: director@meteo.go.ke, info@meteo.go.ke,
Website: <http://www.meteo.go.ke>

KMD MONTHLY AGRO-METEOROLOGICAL BULLETIN



MET/ 27/8 / (8)

Issue No: 07/2025

Date: 04/8/2025

JULY, 2025 MONTHLY BULLETIN.

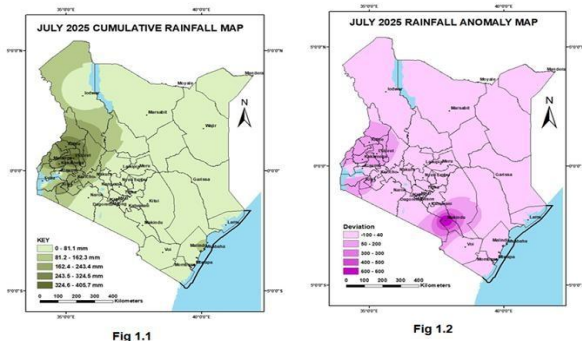
1.0 HIGHLIGHTS

- July marks the peak of the June–July–August (JJA) cold season, especially over the Highlands east of the Rift Valley, including Nairobi County. This period has been characterized by cool, cloudy, and occasionally drizzly conditions, particularly in the early morning hours.
- Temperatures decreased noticeably across much of the country compared to June, largely due to persistent cloudy conditions and reduced solar heating.
- Soil moisture levels across several regions—particularly in western and central Kenya remained favorable for Crop growth, Pasture regeneration and Natural vegetation. This was attributed to cumulative effects of the recent March–May long rains Sustained cloud cover that reduced evapotranspiration.

2.0 WEATHER AND SOIL CONDITION ASSESMENT

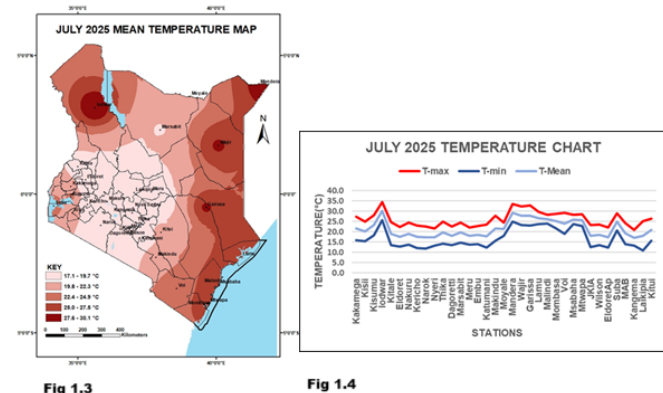
2.1.0 Rainfall amounts

Eldoret station in the Rift valley region recorded the highest amount of rainfall during the month followed by Kakamega station in the Western region. Coastal, Eastern, Coast, Central and Nairobi regions received below average rainfall as indicated on the (**figure 1.2**) rainfall anomaly map.



2.1.1 Mean Temperature

During the month of July temperatures decreased significantly compared to June. Higher temperatures were recorded in the North Western, Eastern and Coastal parts of the country. Lodwar station recorded the highest mean temperature while Central region recorded the lowest mean temperature. Refer to (fig 1.3 and 1.4).



4.0 Expected Weather conditions during AUGUST 2025.

August marks the tail-end of the June–July–August (JJA) cold season, especially over the Highlands east of the Rift Valley, including Nairobi County. It is expected to be cold and dry in many regions, though normal to below rainfall is expected to continue in some areas due to residual moisture and local convergence effects.

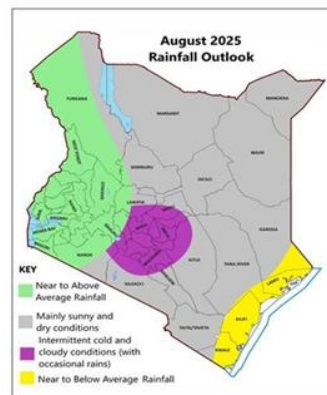


Fig 3.1

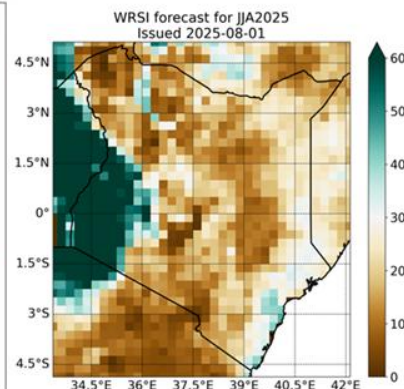


Fig 3.2

The August 2025 outlook

Central region & Nairobi County.

Cloudy and chilly mornings with occasional light drizzle. Temperatures may begin to rise slightly from mid-August onward. (Fig 3.1).

Rift valley, Nyanza and Western Region.

Near- to above-normal rainfall expected to persist, particularly in the Lake Victoria Basin. Soil moisture levels are anticipated to remain sufficient for crop and pasture growth in these regions. Refer to (fig 3.2)

North Eastern and South Eastern regions.

Generally dry and sunny throughout the month. Hot daytime temperatures expected, especially in late August Refer to (fig 3.1). Soil moisture forecast indicates suppressed moisture levels in these regions indicating further deterioration in pasture and water availability. Refer to (fig 3.2)

Coastal Region - Warm and humid, with occasional light showers and occasional rainfall episodes expected, especially in early August. Soil moisture forecast shows sufficient moisture levels in the region. (Fig 3.2)

4.2 August 2025 Outlook & Advisory

August is expected to support continued agricultural activity in key regions of Kenya. Good crop and livestock management, timely harvesting, and pasture conservation will be critical for food security as the country transitions into the drier September–October period.

Mary Githinji

For

Director of Met Services

For inquiries or any clarification, please use the email below

Email: agrometkenya@gmail.com