



KENYA CEREAL ENHANCEMENT PROGRAMME-CLIMATE RESILIENT AGRICULTURAL LIVELIHOODS WINDOW (KCEP-CRAL)

KENYA METEOROLOGICAL DEPARTMENT ***KITUI COUNTY METEOROLOGICAL OFFICE***

P.O. Box 205-90200 Kitui
Tel: +254715255171 Email: Mbithi_d@yahoo.com Website: www.meteo.go.ke

SEASONAL WEATHER ADVISORIES FOR KITUI COUNTY OCTOBER- DECEMBER SEASON

1 Agro-weather advisory:

- ❖ This advisory was developed on 7th and 8th October 2021 at Kitui Agricultural Training Centre (KATC), Kitui County by a team of subject matter experts from Kenya Meteorological Department (KMD) and Ministry of Agriculture, Livestock and Fisheries (MoALF) in Kitui County with financial support from KCEP-CRAL project and its international partners.
- ❖ The advisory is mainly aimed at supporting farm level decision making in Kitui County in planning agricultural activities for the October-November-December (OND) 2021 rainfall season
- ❖ It is intended for farmers in Kitui County.

2 Weather forecast for the October- December 2021 Season:

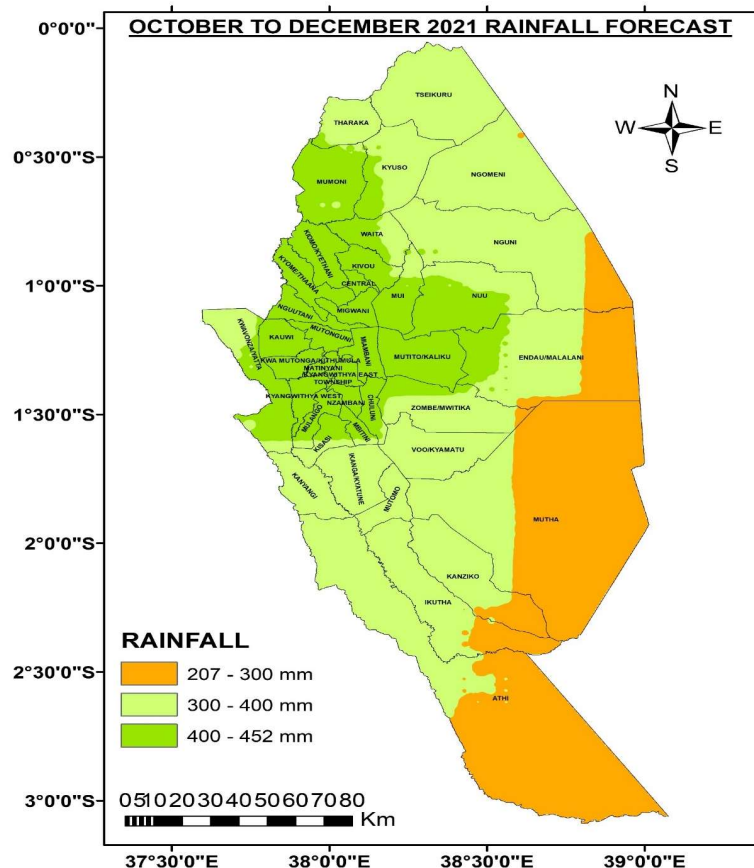


Fig 1. October-November-December (OND) 2021 seasonal weather forecast for Kitui County

ZONE	ONSET	CESSATION	LENGTH OF SEASON
ZONE A: 207-300mm (Athi, Ikutha, Kanziko, Mutha, Zombe/Mwitika, Endau/Malalani, Nguni)	Second to third week of November, 2021.	Third to fourth week of December, 2021	About 1 month
ZONE B: 300-400mm (Athi, Kanyangi, KV, Kisasi Ikutha, Kanziko, Mutomo, Mutha, Nuu, Voo/Kyamatu, Zombe/Mwitika, Endau/Malalani, Nguni, Mui, Waita, Ngomeni, Kyuso, Tseikuru, Tharaka)	Second to third week of November, 2021.	Third to fourth week of December, 2021	About 1 month
ZONE C: 400-452mm (Kisasi, Mulango, Chuluni, Nzambani, Mbitini, Miambani, Kyangwithya East, Kyangwithya West), Township, Matinyani, Kauwi, Migwani, Nguutani, Kyome/Thaana, Kiomo/Kyethani, parts of Endau/Malalani, Zombe/Mwitika, Kwa Vonza/Yatta, Mutito/Kaliku, Nuu, Mui Basin, Kivou, Waita, Nguutani)	Second to third week of November, 2021.	Third to fourth week of December, 2021	About 1 month

Table 1. Expected onset and cessation dates for various zones in Kitui County for OND 2021

Forecast Summary:

- ❖ The Climate Outlook for the October-November-December (OND) 2021 “Short Rains” season indicates that most parts of the County are likely to experience depressed rainfall.
- ❖ The season is expected to have a delayed onset (8-15th November 2021) and early cessation (13-20th December 2021).
- ❖ The distribution is expected to be poor over time and space.
- ❖ The other parameters (e.g., temperature) are also pointing to a drier than usual OND 2021 season.
- ❖ Over some areas, the season will be characterised by few heavy rain days, which may lead to flash floods.
- ❖ The characteristic of the season means that the growing season will be affected and recovery in the Sub-counties is not feasible.
- ❖ A seasonal update will be provided by KMD if the above predictions (amount, onset, cessation) changes.
- ❖ There will also be weekly and monthly weather updates from KMD.
- ❖ That updates can be obtained from CDMS WhatsApp platforms, KMD website, SMS and Syokimau FM Radio (**Radio dates to be communicated**).

3. Agronomic advisories

3.1 Upper Wards: Kitui Central, Kitui West, Mwingi North (Mumoni, parts of Tharaka), Kitui East (Chuluni, Nzambani), Mwingi Central (Waita, Kivou, parts of Mui)

- ❖ Expected rainfall amount range: 400-452mm
- ❖ Expected dates of onset and cessation: 8-15th November 2021 and 13-20th December 2021.
- ❖ Expected distribution: Poor distribution in time and space.

	Recommended actions	Responsible
Hazards and Risks	Drought, flash floods, pests and diseases outbreak, strong winds; MDAs and NGOs to take action.	MDAs
Opportunities	General water harvesting	Ministry of water
Advisories for Maize	<ul style="list-style-type: none"> ❖ DH02, KDVI ❖ Planting dates-immediately rain sets ❖ Pest and disease control –farmers should monitor and manage pests and diseases ❖ Weed control-early and timely to avoid competition 	MOALF
Advisories for Beans.	Mwezi moja, Katumani bean 1– in the bean growing areas.	MOALF
Advisories for Sorghum	Gadam, Local, KARI Mtama 1	MOALF
Advisories for Green Grams	N26, KS20, Local, Karemba & Biashara.	MOALF
Advisories for Cow peas	K80, KVU 27-1 & KEN KUNDE M66,	MOALF
Advisories for Pigeon peas	Mbaazi 1, Mbaazi 2	MOALF
Advisories for Sweet potatoes	Local	MOALF
Advisories for Dolichos (Mbumbu/Nzavi)	DL1002, DL1001	MOALF
Advisories for Millets	Finger millet, KPM 1 & 2	MOALF
Other advisories <i>(add rows for each if necessary)</i>	<ul style="list-style-type: none"> ❖ Prepare land early ❖ Harvest water by following methods-roof top, terraces, cut-offs ❖ Practice the following conservation agriculture methods-tilling and manuring, repair of soil and water conservation structures 	Farmers/Agricultural extension officers

3.2 Middle Wards: Parts of Ikutha, Kanziko, Mutomo/Kibwea, Ikanga/Kyatune, Parts of Mutha, Kanyangi, Parts of Kisasi, Parts of Yatta/Kwa Vonza, Voo/Kyamatu, Parts of Zombe/Mwitika, Endau/Malalani, Nguni, parts of Nuu, Parts of Waita, Ngomeni, Kyuso, Tseikuru and Tharaka.

- ❖ Expected rainfall amount range: 300-400mm
- ❖ Expected dates of onset and cessation: 8-15th November 2021 and 13-20th December 2021.
- ❖ Expected distribution: Poor distribution in time and space.

	Recommended actions	Responsible
Hazards and Risks	Drought, flash floods, pests and diseases outbreak, strong winds; MDAs and NGOs to take action.	MDAs
Opportunities	General water harvesting	Ministry of Water
Advisories for Maize	<ul style="list-style-type: none"> ❖ DH02, Sungura 301, PAN 301M, KDV2 ❖ Planting dates-immediately rain sets ❖ Pest and disease control –farmers should monitor and manage pests and diseases <p>Weed control-early and timely to avoid competition</p>	MOALF
Advisories for Beans	KAT BN1, KAT 56, GLP92 (Mwitmania), Nyota, GLP 1000 (Mwezi Moja)	MOALF
Advisories for Sorghum	Gadam, Kari Mtama1, Seredo	MOALF
Advisories for Green Grams	KS20, N26, Biashara, Karembo, Ndengu Tosha	MOALF
Advisories for Cow peas	M66, K80, KVU-27-1, Ken Kunde	MOALF
Advisories for Dolichos (Mbumbu/Nzavi)	DL1002	MOALF
Advisories for Pigeon peas	Mbaazi 1 and Mbaazi 2, KAT 60/8	MOALF
Advisories for Millet	Pearl millet1 and Pearl millet 2	MOALF
Advisories for Cotton	Hart89M, BT cotton	MOALF
Other advisories (<i>add rows for each if necessary</i>)	Pasture-Plant more grass (Nthaata kivumbu, Mbwea, Mbeetwa, Ikoka)	Farmers/Agricultural extension officers

3.3 Lower Wards: Parts of Athi, Ikutha, Kanziko, Mutha,Zombe/Mwitika, Endau/Malalani and Nguni.

- ❖ Expected rainfall amount range: 207-300mm.
- ❖ Expected dates of onset and cessation: 8-15th November 2021 and 13-20th December 2021.
- ❖ Expected distribution: Poor distribution in time and space.

	Recommended actions	Responsible
Hazards and Risks	Drought, flash floods, pests and diseases outbreak, strong winds; MDAs and NGOs to take action.	MDAs
Opportunities	General water harvesting	Ministry of water
Advisories for Maize	No maize to be planted	MOALF
Advisories for Beans	No beans to be planted	MOALF
Advisories for Sorghum	Gadam, Seredo & Serena, local variety	MOALF
Advisories for Green Grams	N26 & KS20, Karembo, Biashara	MOALF
Advisories for Cowpeas	M66, K80, KVU-27-1 & KENKUNDE, local	MOALF
Advisories for Dolichos (Mbumbu/Nzavi)	DL1002	MOALF
Advisories for Pearl millet	KPM 1 & 2	MOALF
Advisories for Pigeon peaaas	Mbaazi 1, 2	MOALF
Other advisories <i>(add rows for each if necessary)</i>	Pasture-Plant more grass (Nthaata kivumbu, Mbwea, Mbeetwa, Ikoka)	Farmers/MOAL Farmers/Agricultural extension officers